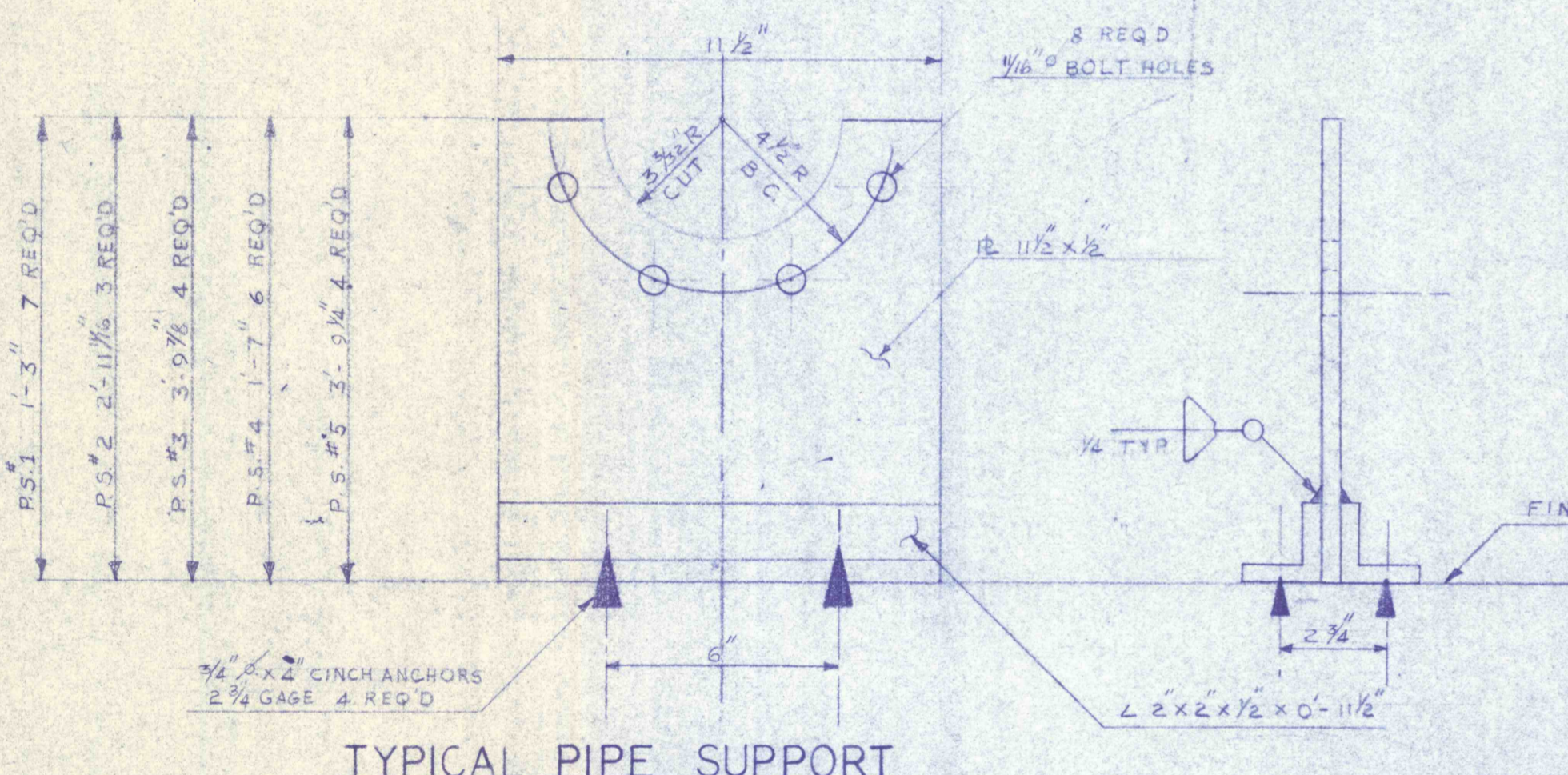


DETAIL A

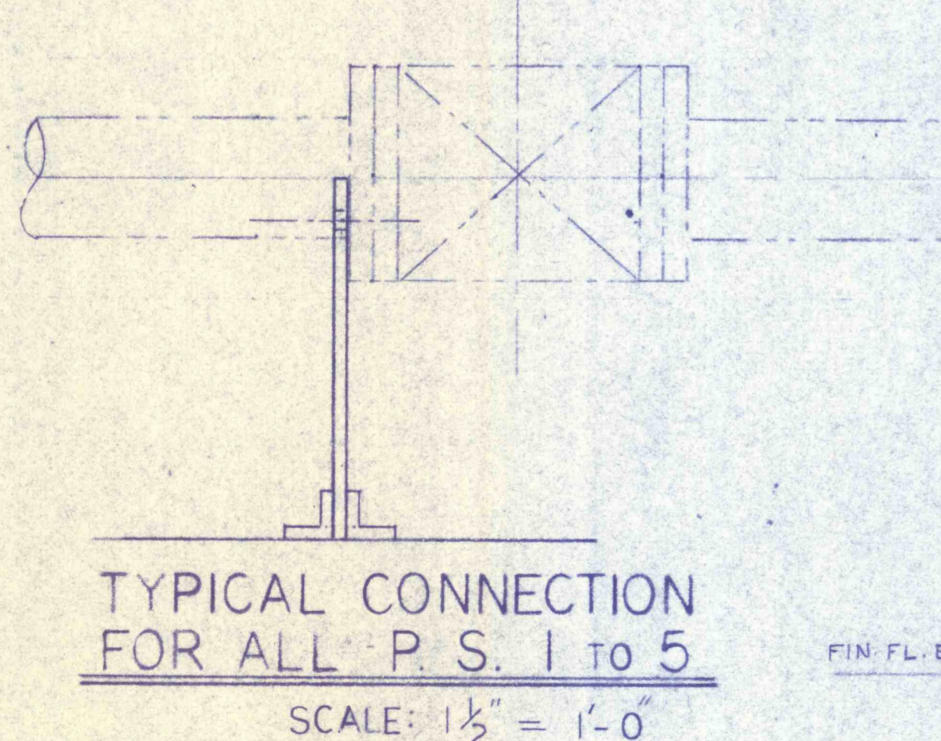
PLAN - PUMP HOUSE-DWG C-1, C-2 & C-5
BASEMENT
 SCALE: 1/4" = 1'-0"

PLAN - PUMP HOUSE
GROUND FLOOR
 SCALE: 1/4" = 1'-0"

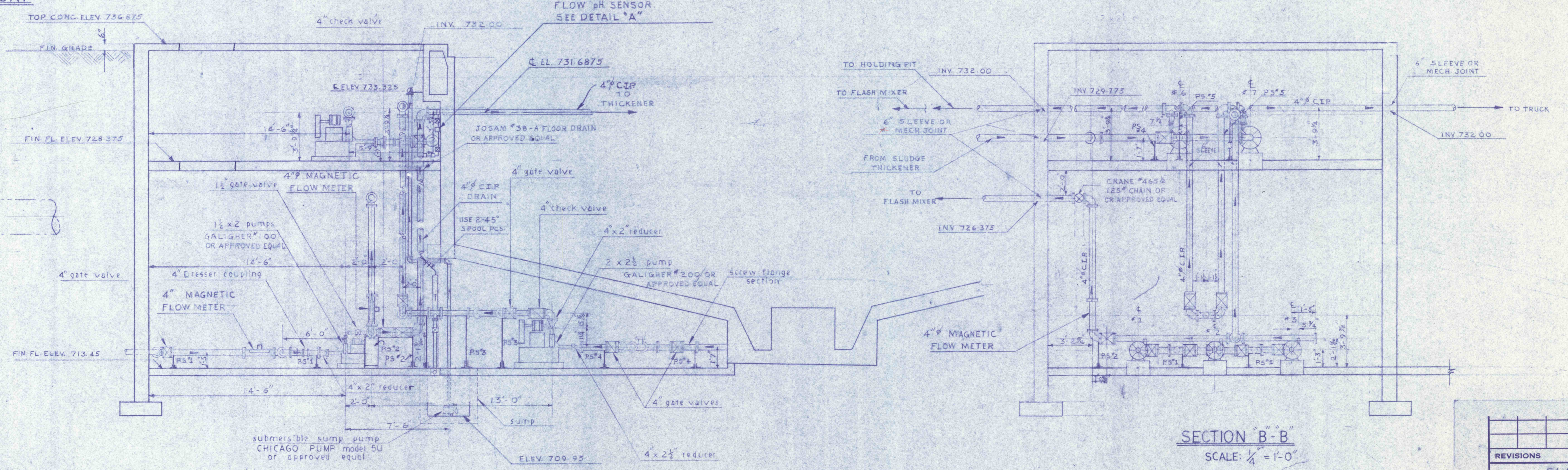


TYPICAL PIPE SUPPORT

- GENERAL NOTES:**
- 1 ALL PIPING TO BE CIP ASA CLASS 125 UNLESS OTHERWISE NOTED
 - 2 ALL FLANGES TO BE CIP ASA B16.1 CLASS 125 UNLESS OTHERWISE NOTED
 - 3 ALL FITTINGS TO BE CIP ASA B16.1 CLASS 125 UNLESS OTHERWISE NOTED
 - 4 ALL GASKETS TO BE 3/16 THICK



TYPICAL CONNECTION FOR ALL P.S. 1 TO 5
 SCALE: 1 1/2" = 1'-0"



SECTION A-A
 SCALE: 1/4" = 1'-0"

SECTION B-B
 SCALE: 1/4" = 1'-0"

REVISIONS	

SLUDGE THICKENER-PUMP ROOM-MECH.	
CONSTRUCTION OF TREATMENT FACILITIES FOR ACID MINE DRAINAGE RAUSCH CREEK WATERSHED SCHUYLKILL COUNTY PENNSYLVANIA	
ANTHRACITE RESEARCH & DEVELOPMENT CO. INC. consulting engineers POTTSVILLE PENNSYLVANIA	JOB NO: 6805 DATE: NOV. 1969 SCALE: NOTED DRAWN: G.C.F. APPROVED: T.H.R./J.L.L. C-20