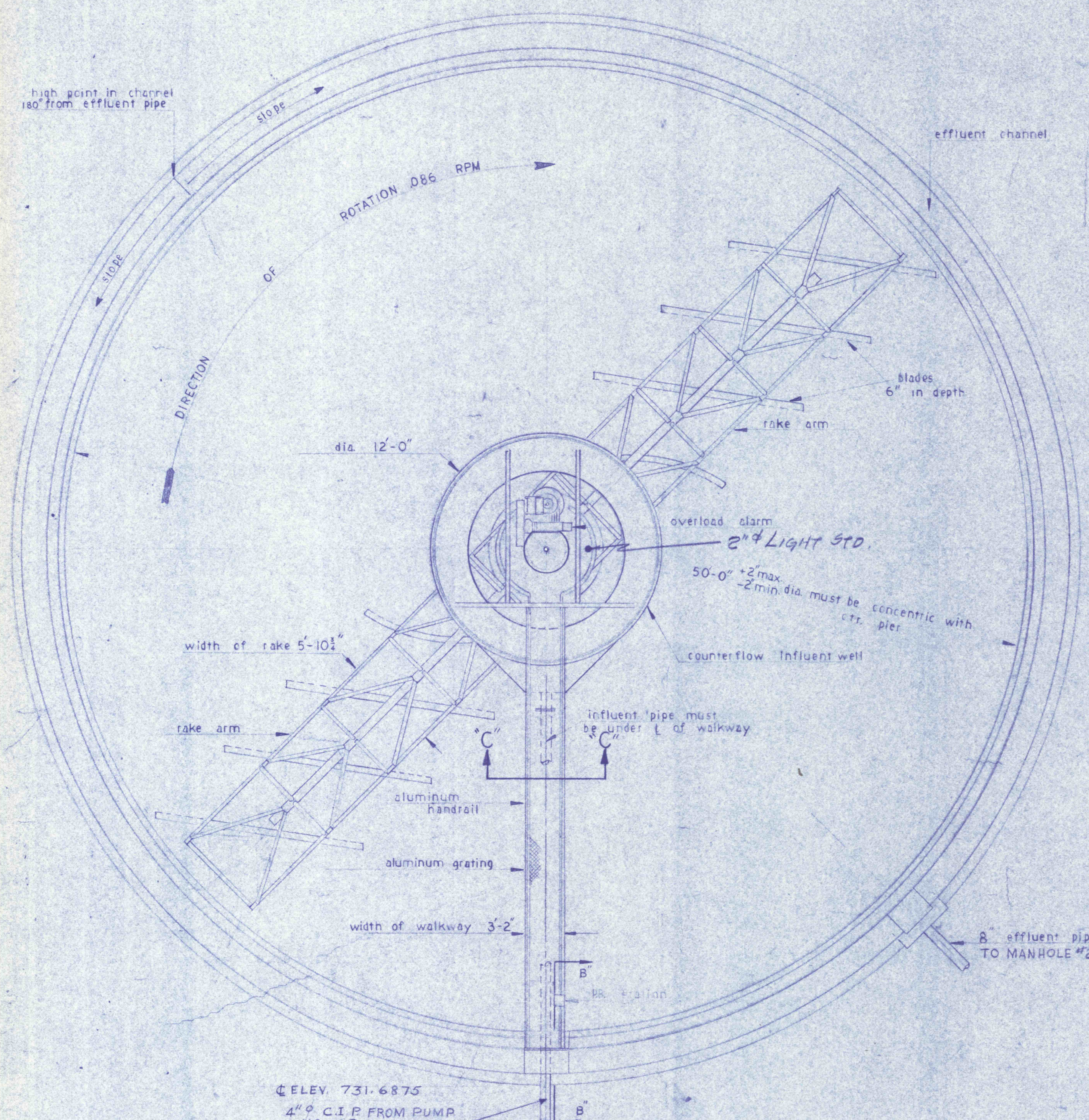
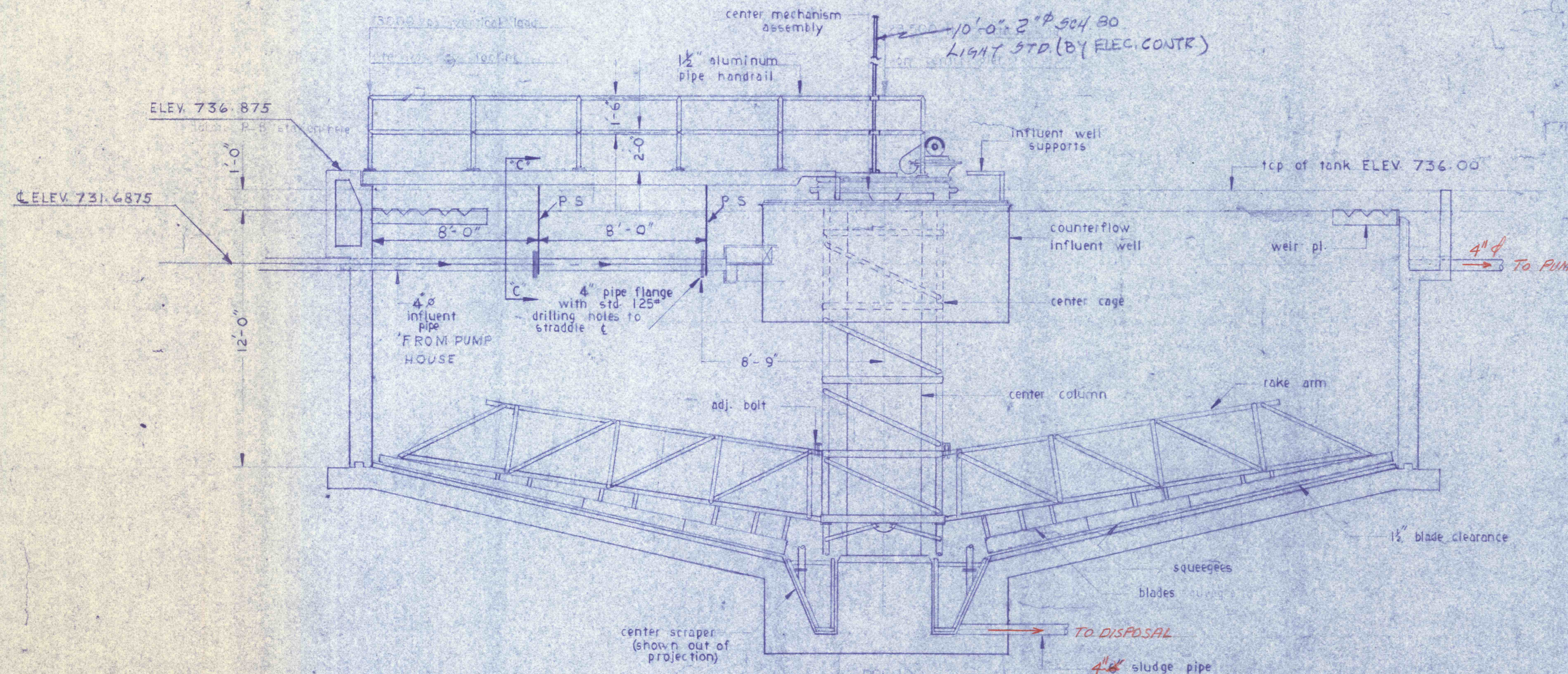


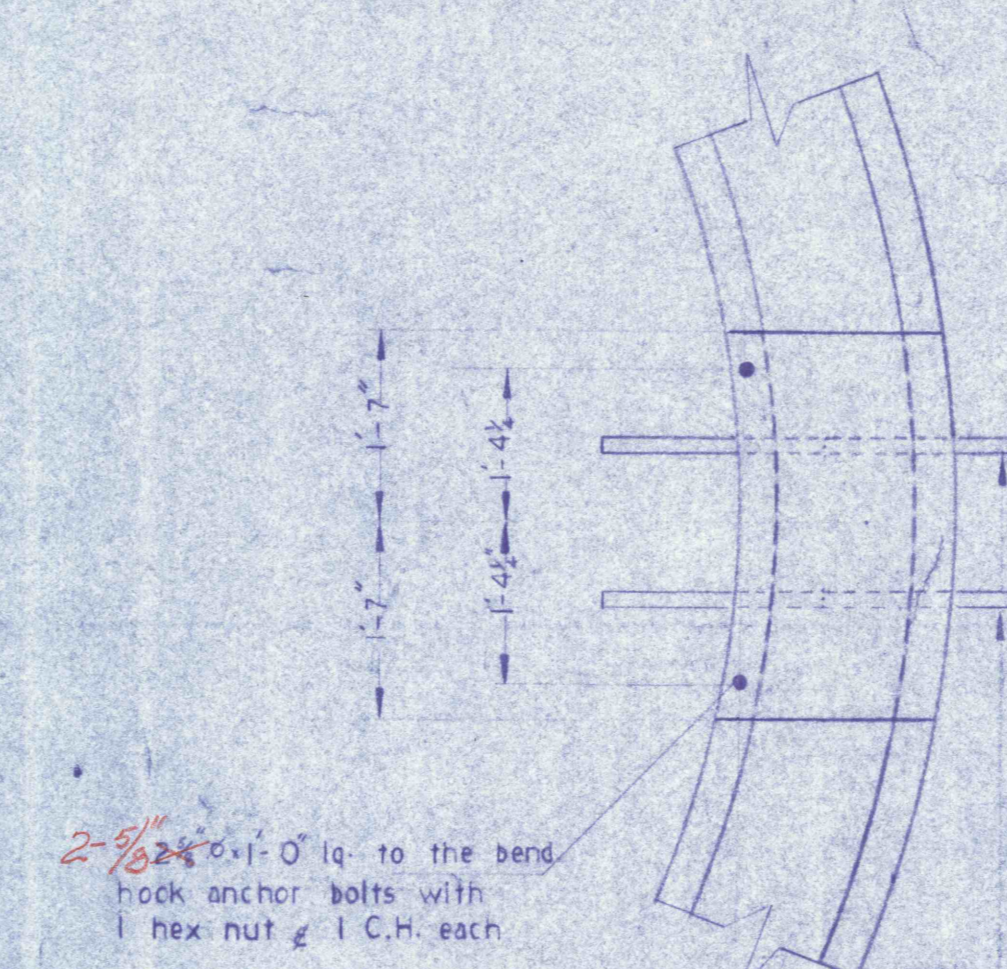
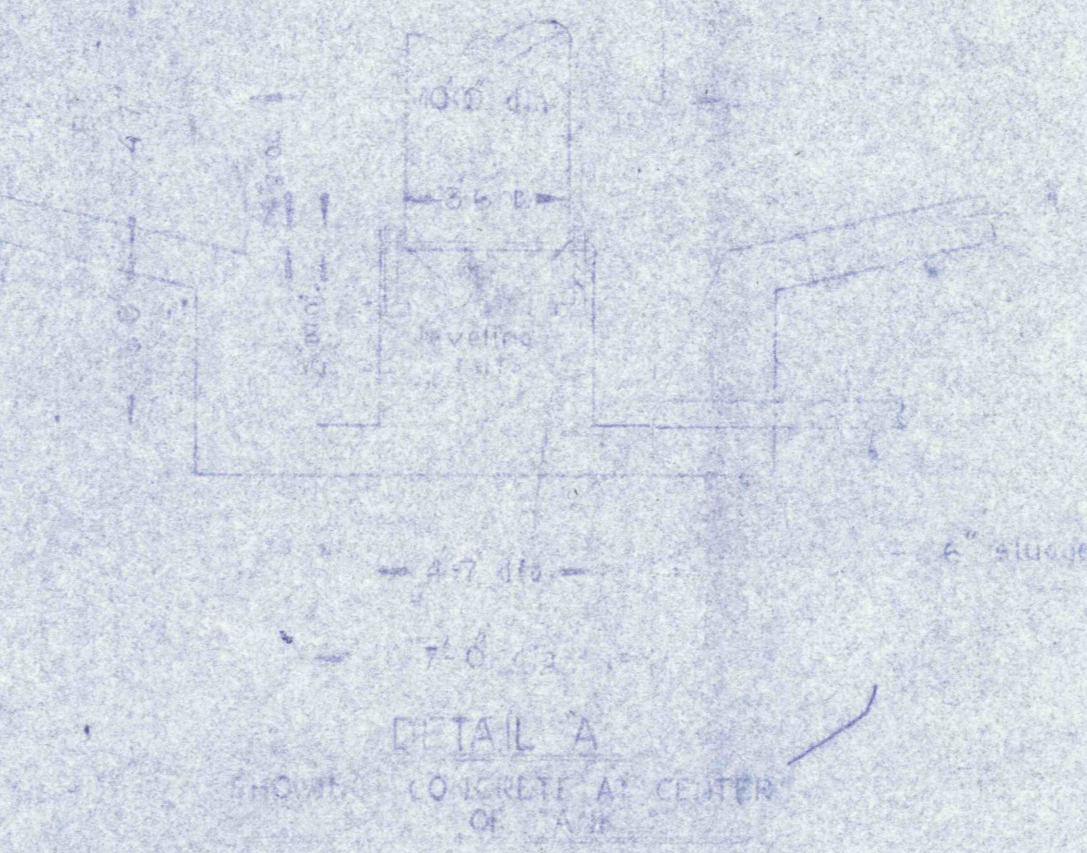
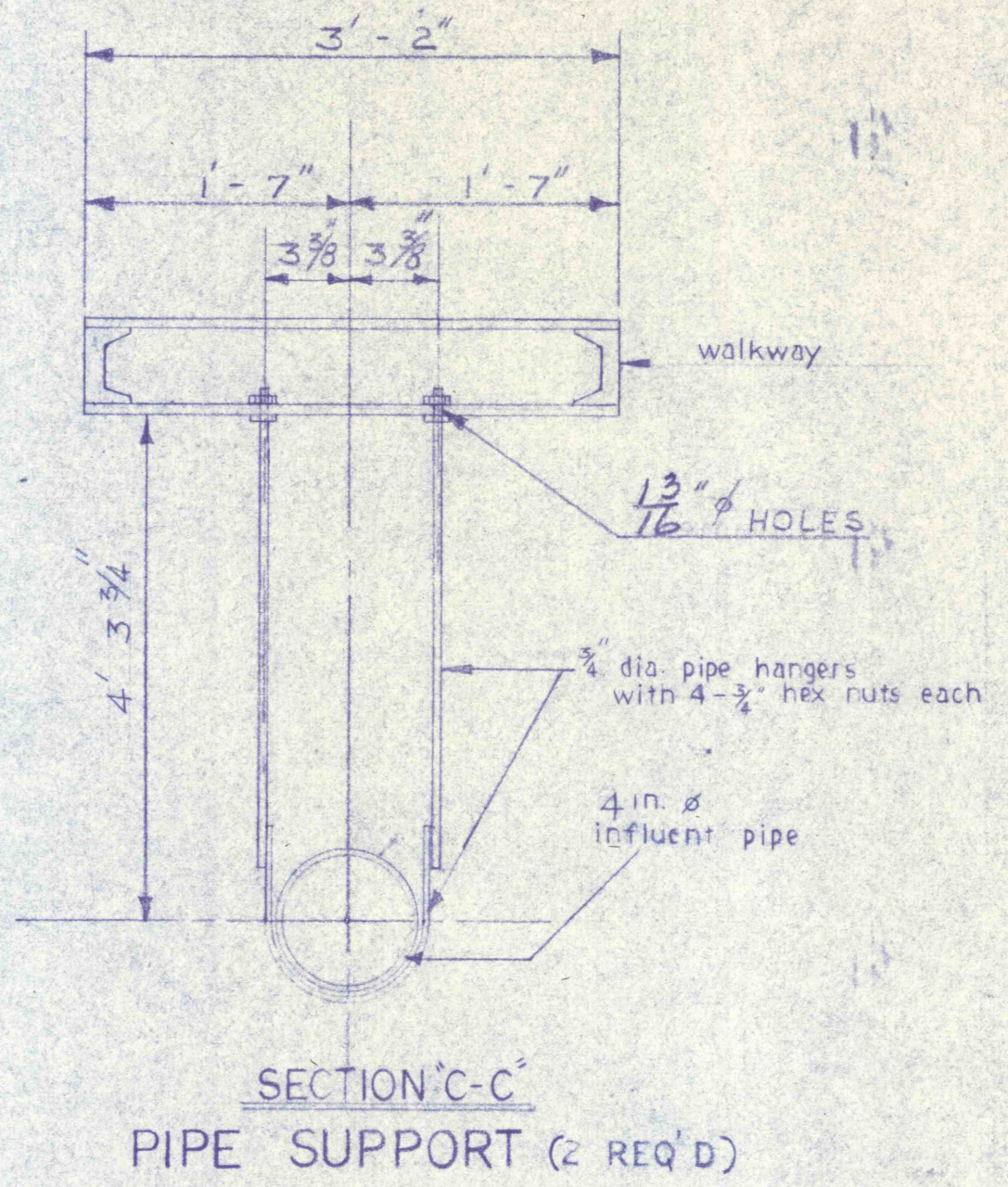
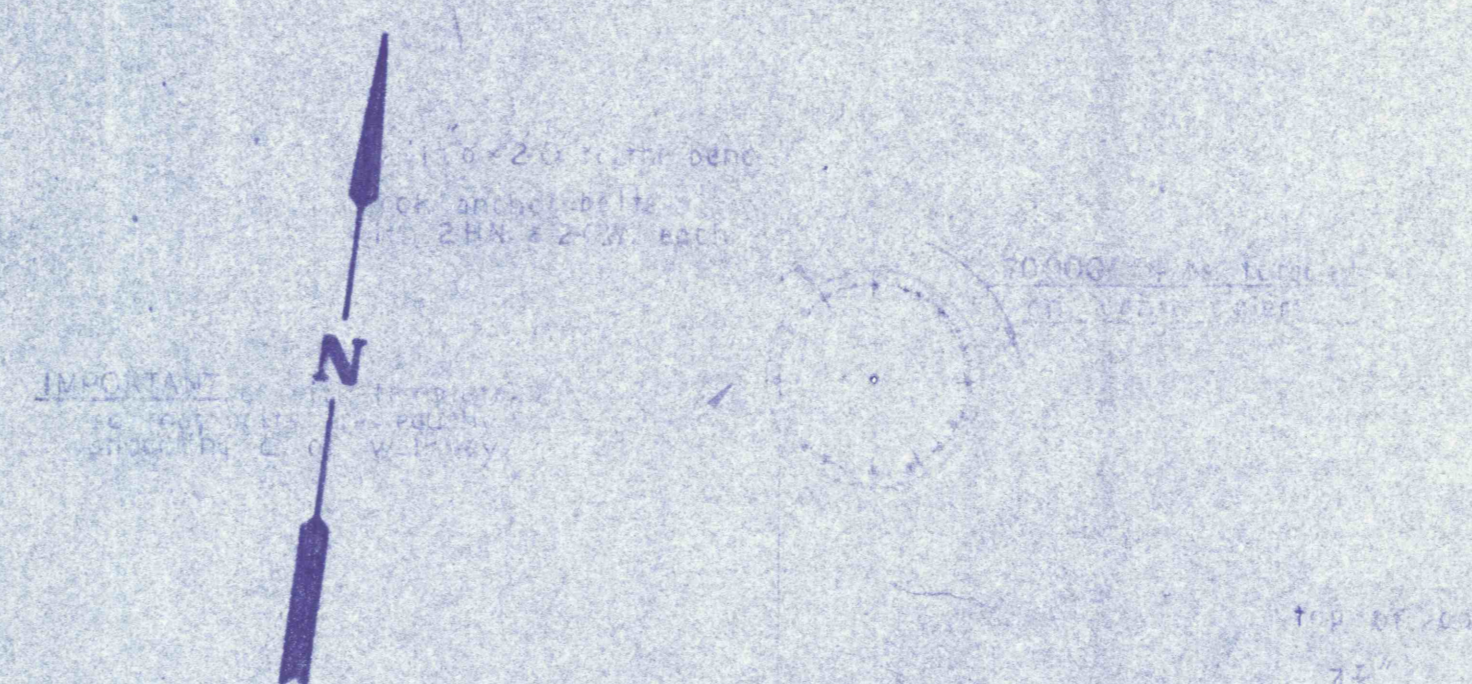
NOTE
Influent effluent & sludge pipes & walkway may be oriented to suit local conditions



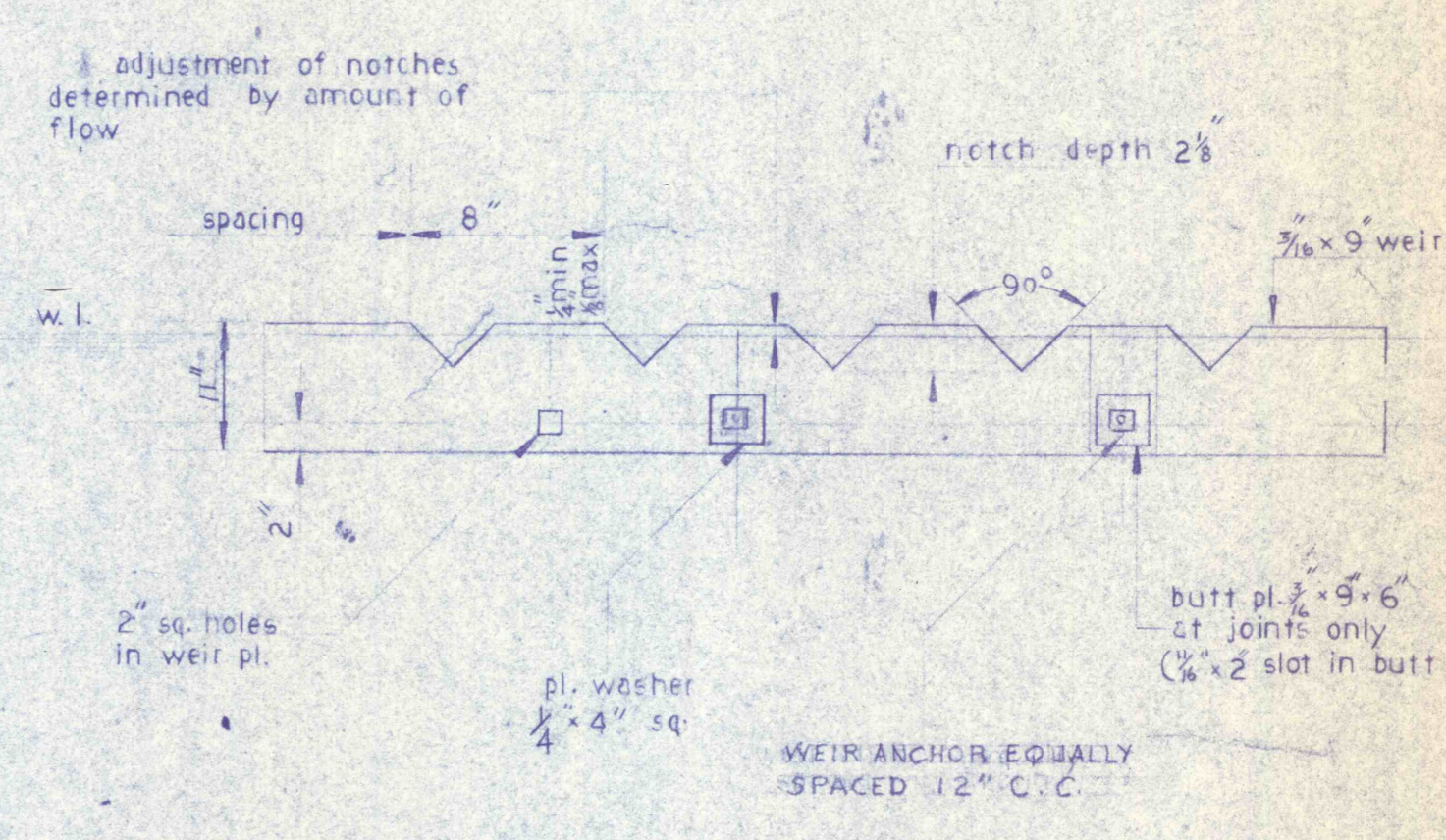
PLAN - DWG C-1-C-2 & C-5
SCALE: 1/4" = 1'-0"



SECTIONAL ELEVATION
SCALE: 1/4" = 1'-0"



SECTION B-B
NO SCALE



GENERAL NOTES

1. WATER-TIGHT FLANGED SLEEVE FOR ALL PIPES THRU WALLS OR SLABS BELOW WATER LEVEL.
2. REFER TO SITE PLAN DWG. NO. C-1 FOR LOCATION OF UNIT.



REVISIONS	

SLUDGE THICKENER - MECHANICAL	
CONSTRUCTION OF TREATMENT FACILITIES OF ACID MINE DRAINAGE RAUSCH CREEK WATERSHED SCHUYLKILL COUNTY PENNSYLVANIA	
JOB NO: 6805	DATE: NOV. 1969
SCALE: NOTED	DRAWN: G.C.F.
APPROVED: T.H.R. J.J.L.	DRAWING NO: C-19
ANTHRACITE RESEARCH & DEVELOPMENT CO. INC. consulting engineers POTTSDALE PENNSYLVANIA TAMAQUA	