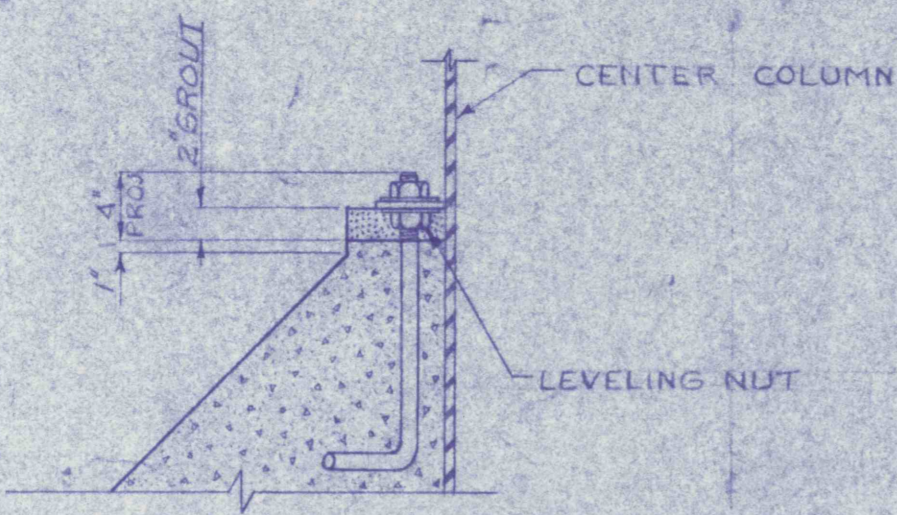
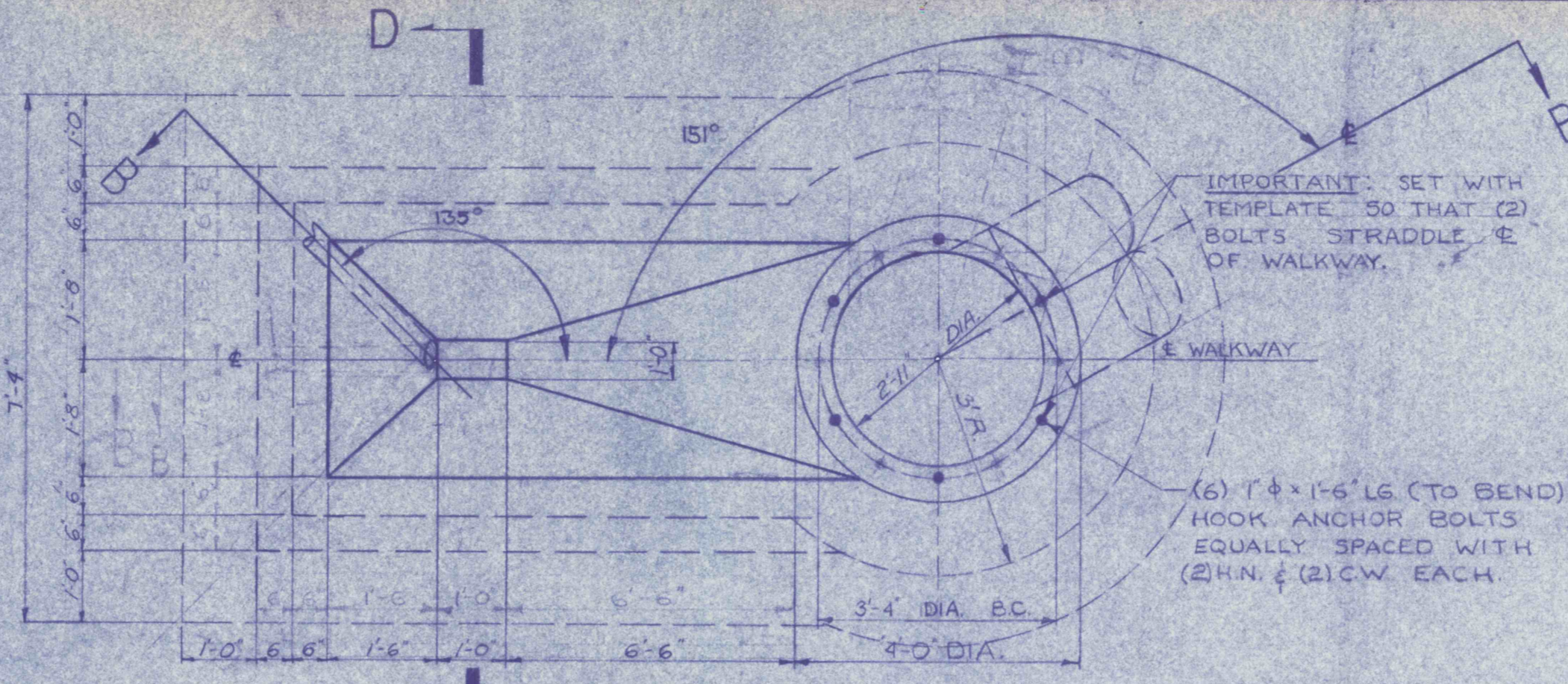


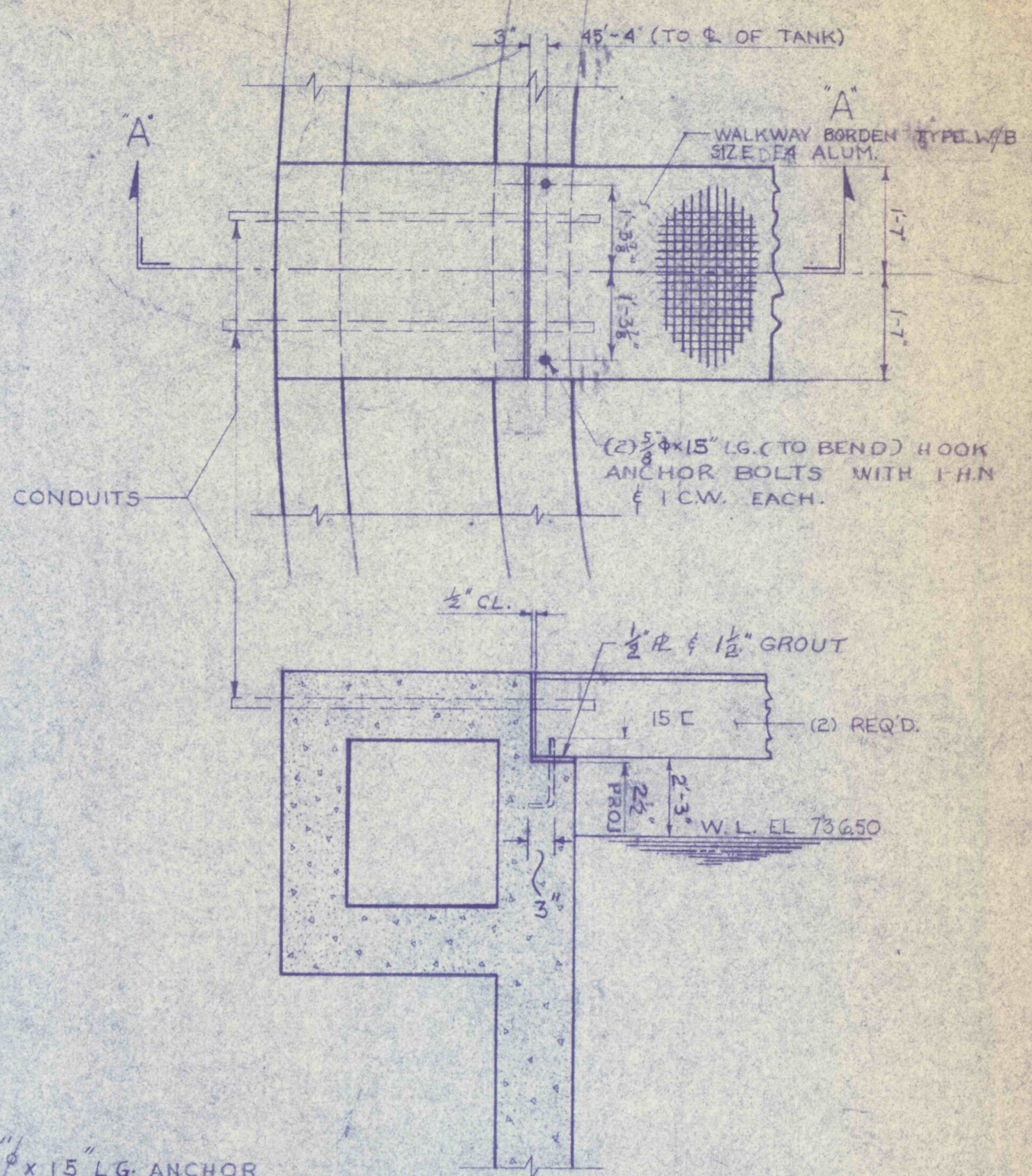
ENLARGED PLAN
SCALE: 1/4"=1'-0"



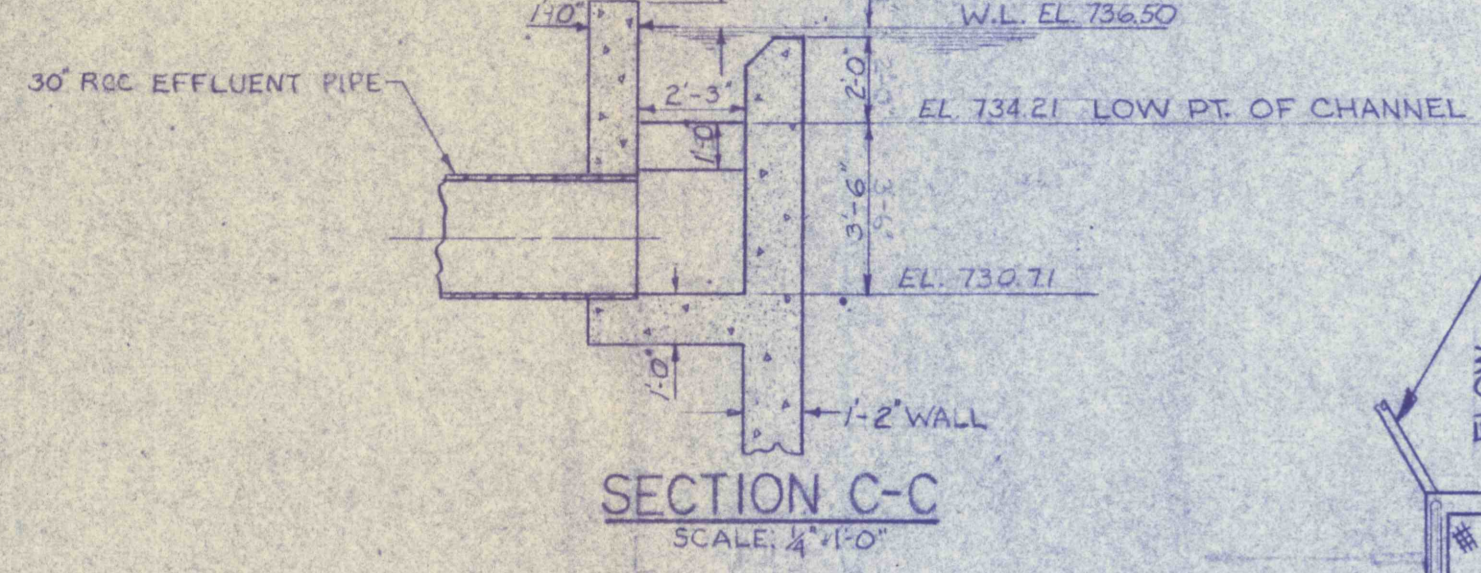
DETAIL D
SCALE: 1"=1'-0"



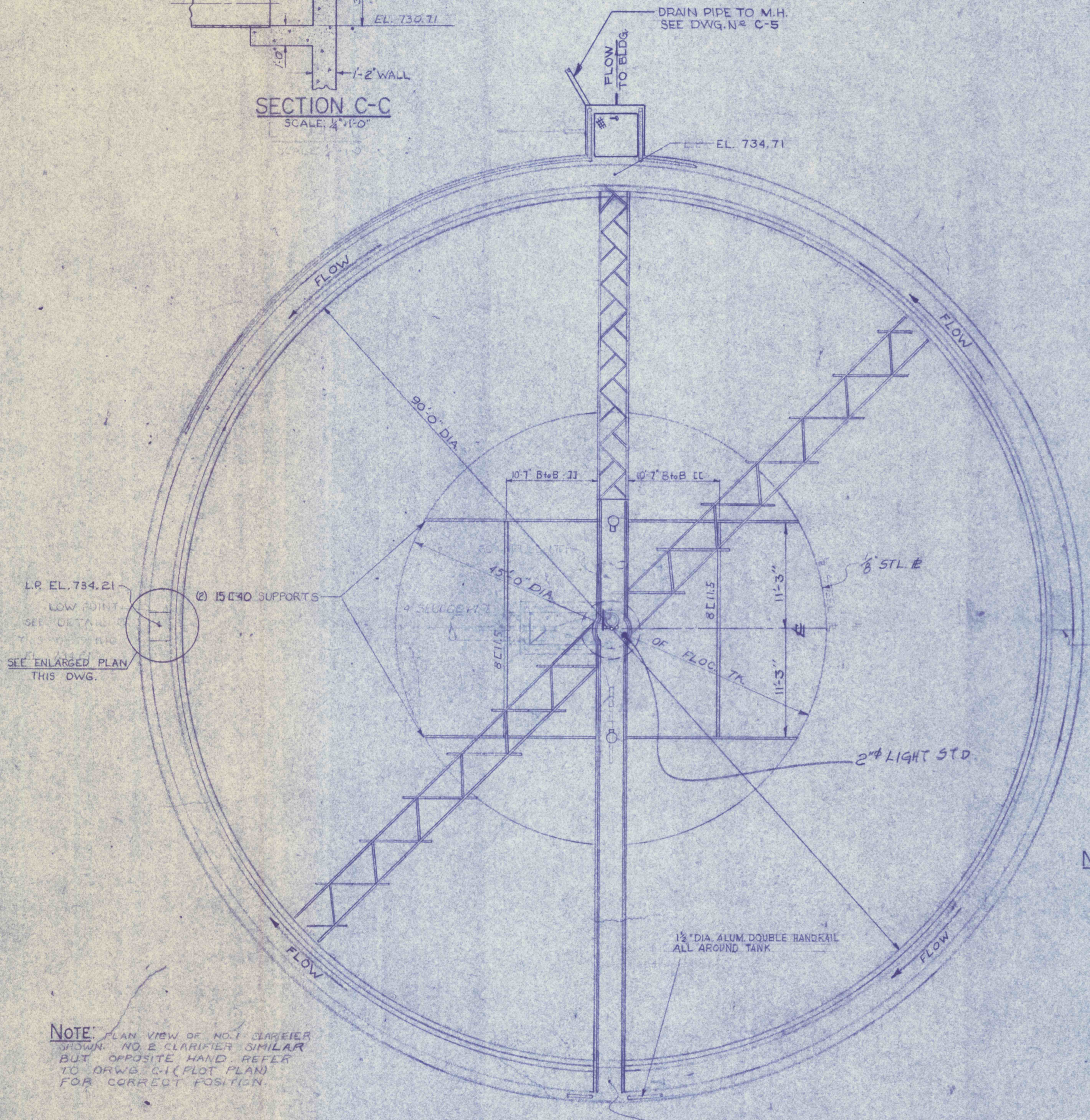
SECTION B-B DWG C-16
DETAIL OF TANK CENTER
SCALE: 1/2"=1'-0"



SECTION A-A
DETAIL OF WALKWAY LANDING
SCALE: 1/2"=1'-0"



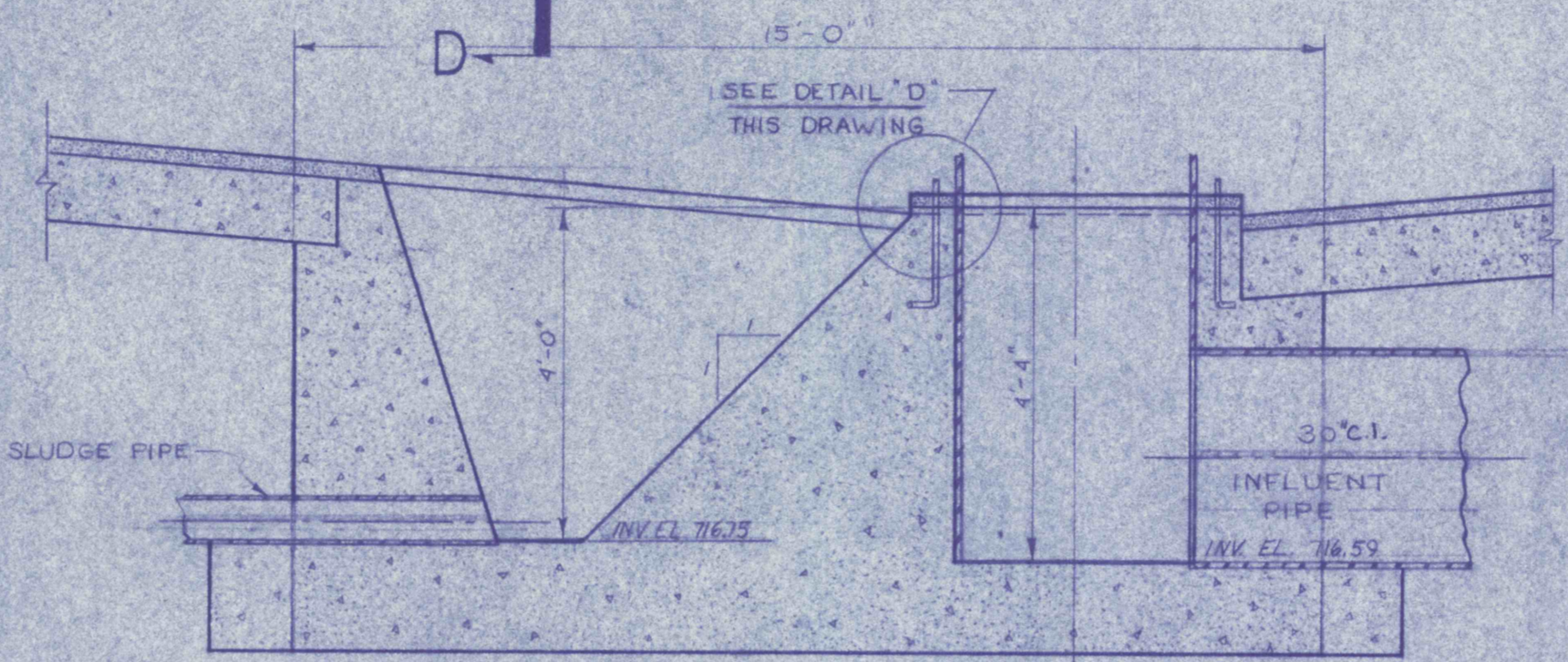
SECTION C-C
SCALE: 1/2"=1'-0"



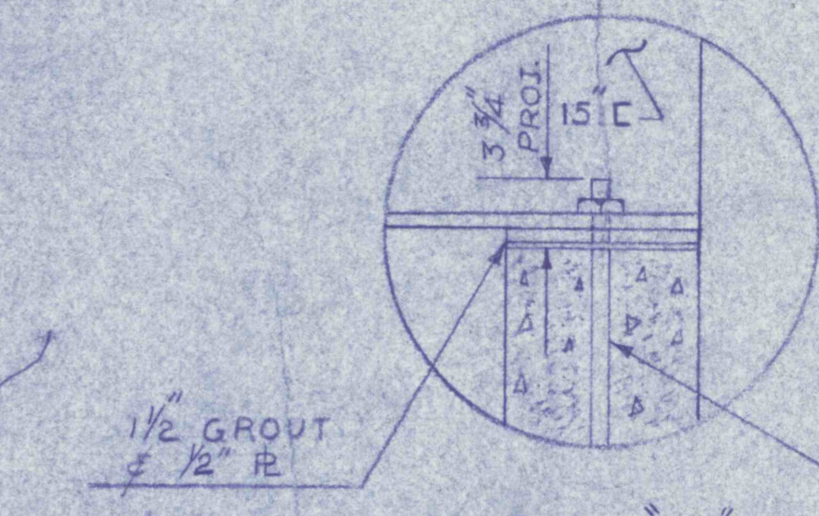
PLAN
SCALE: 1/8"=1'-0"
DWG C-1 C-2 & C-5

NOTE: PLAN VIEW OF NO. 1 CARRIER SHOWN. NO. 2 CARRIER SIMILAR BUT OPPOSITE HAND. REFER TO DWG. C-1 (PIST. PLAN) FOR CORRECT POSITION.

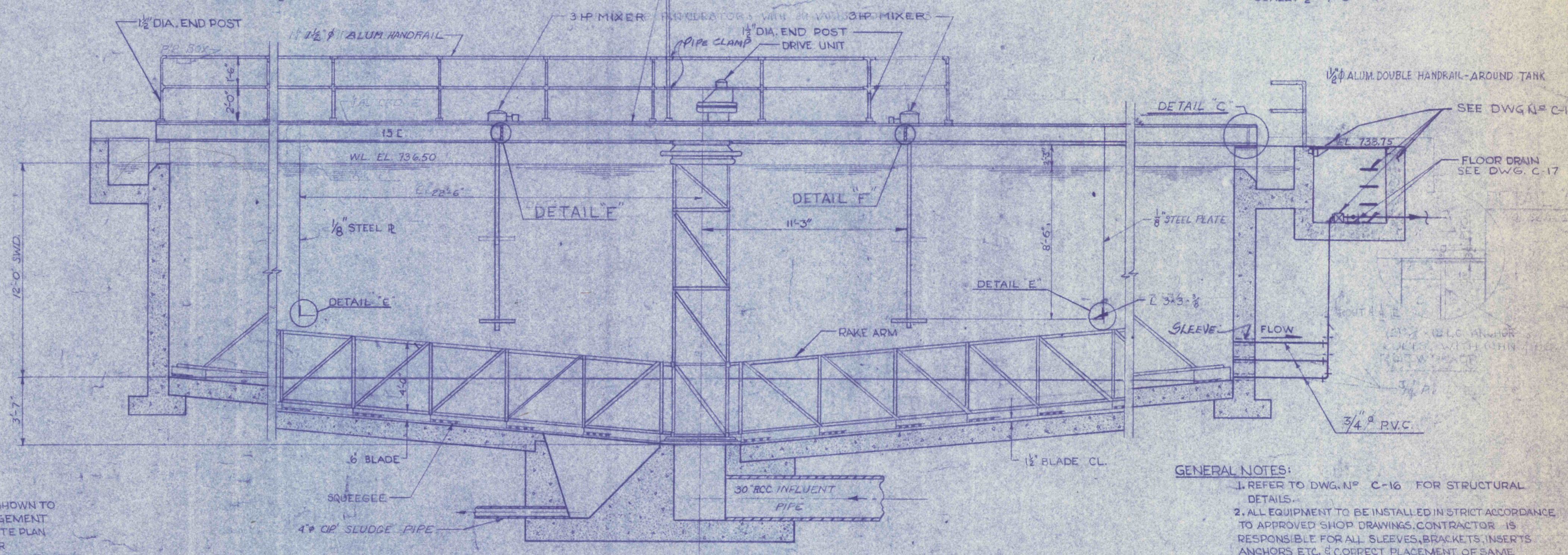
NOTE: PLAN & ELEVATION VIEWS SHOWN TO INDICATE GENERAL ARRANGEMENT OF EQUIPMENT. REFER TO SITE PLAN DWG. NO. C-1 FOR PROPER ORIENTATION OF WALKWAY-INFLUENT PIPING & DISCHARGE PIPING OF BOTH CLARIFIERS.



SECTION B-B DWG C-16
DETAIL OF TANK CENTER
SCALE: 1/2"=1'-0"

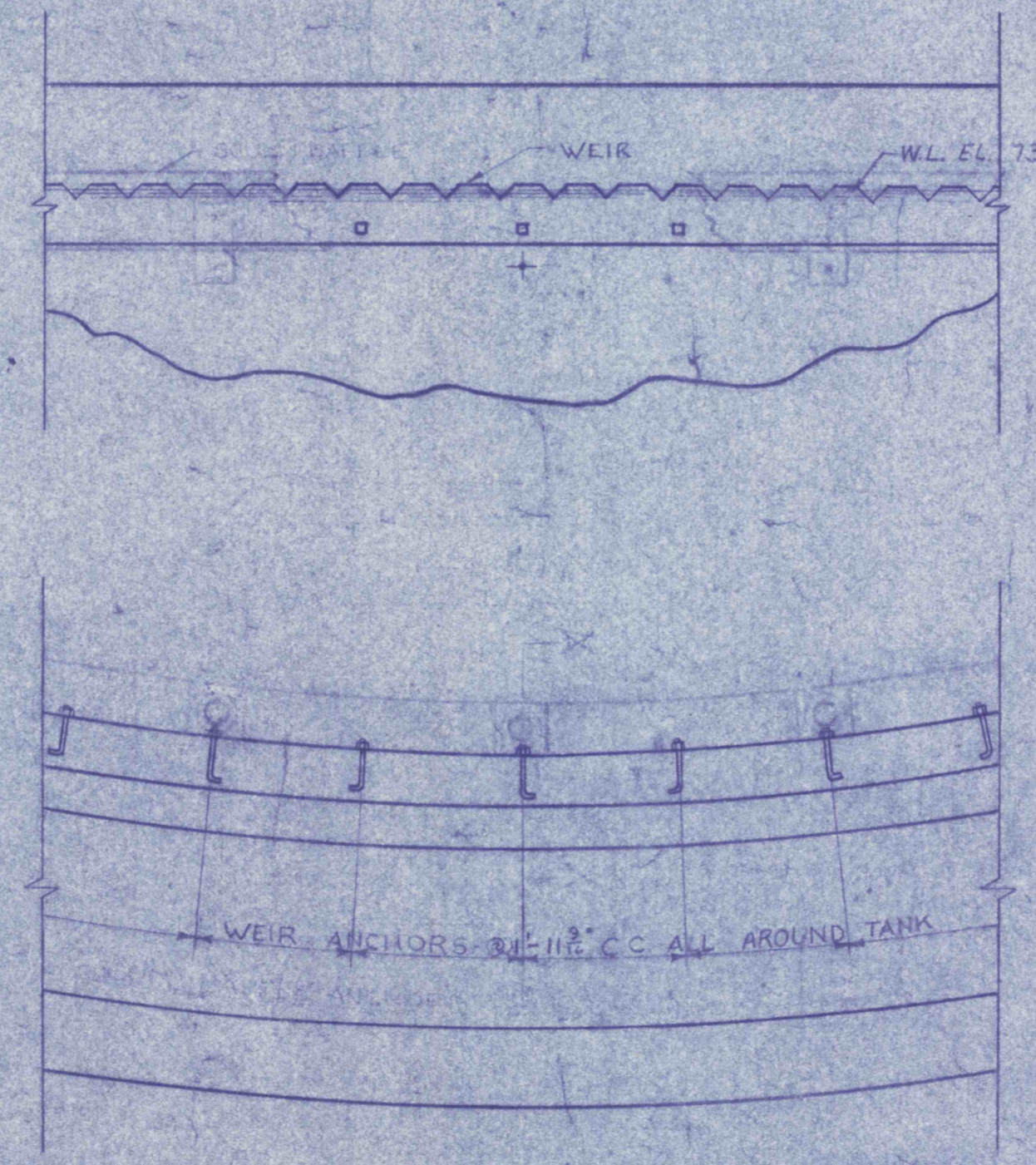


DETAIL C
SCALE: 1/2"=1'-0"

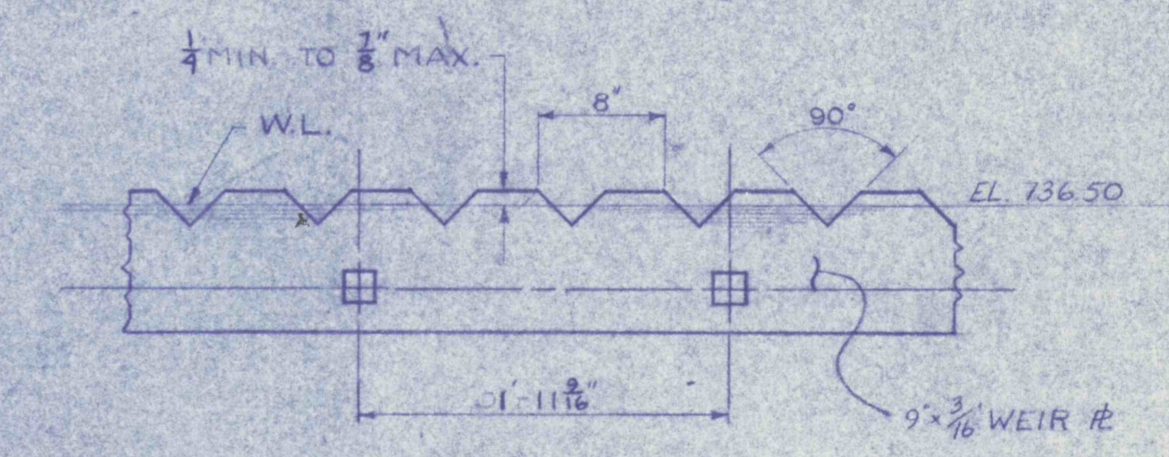


TYPICAL SECTION
SCALE: 1/2"=1'-0"

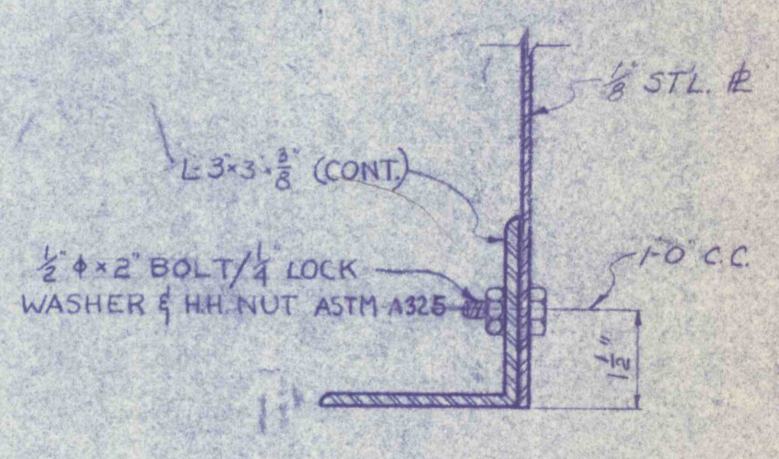
GENERAL NOTES:
1. REFER TO DWG. NO. C-16 FOR STRUCTURAL DETAILS.
2. ALL EQUIPMENT TO BE INSTALLED IN STRICT ACCORDANCE TO APPROVED SHOP DRAWINGS. CONTRACTOR IS RESPONSIBLE FOR ALL SLEEVES, BRACKETS, INSERTS, ANCHORS, ETC. & CORRECT PLACEMENT OF SAME DURING CONCRETE CONSTRUCTION.
3. WATER TIGHT FLANGED SLEEVE FOR ALL PIPES THRU WALLS OR SLABS BELOW WATERLEVEL.



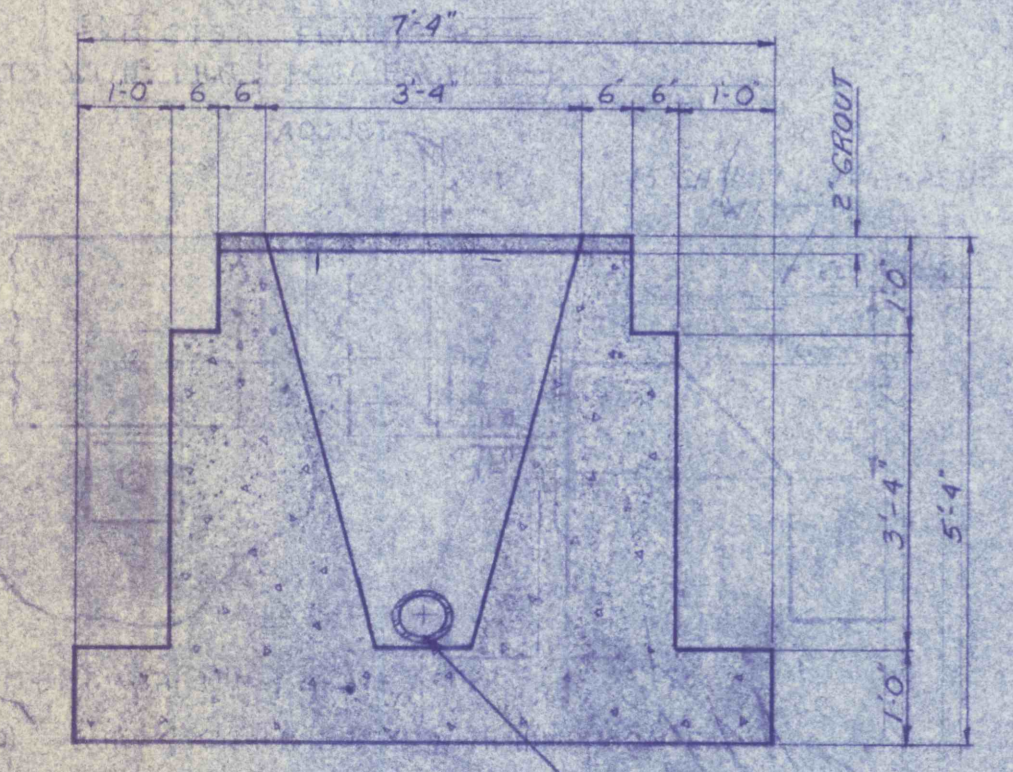
TYPICAL DETAIL OF WEIR ANCHORS
SCALE: 1/2"=1'-0"



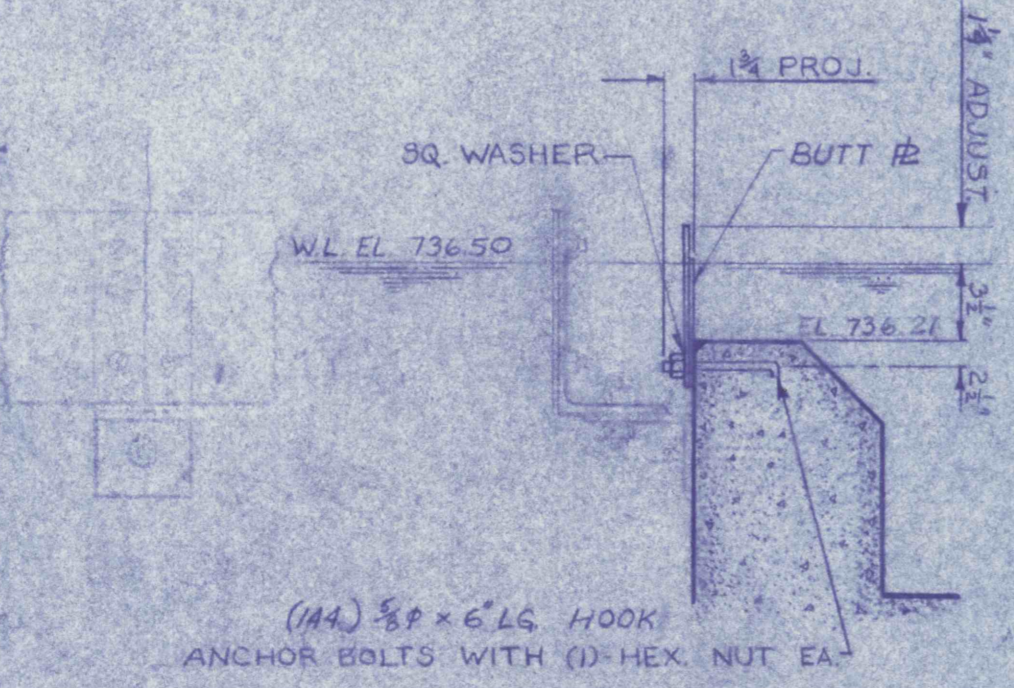
DETAIL OF WEIR
SCALE: 1"=1'-0"



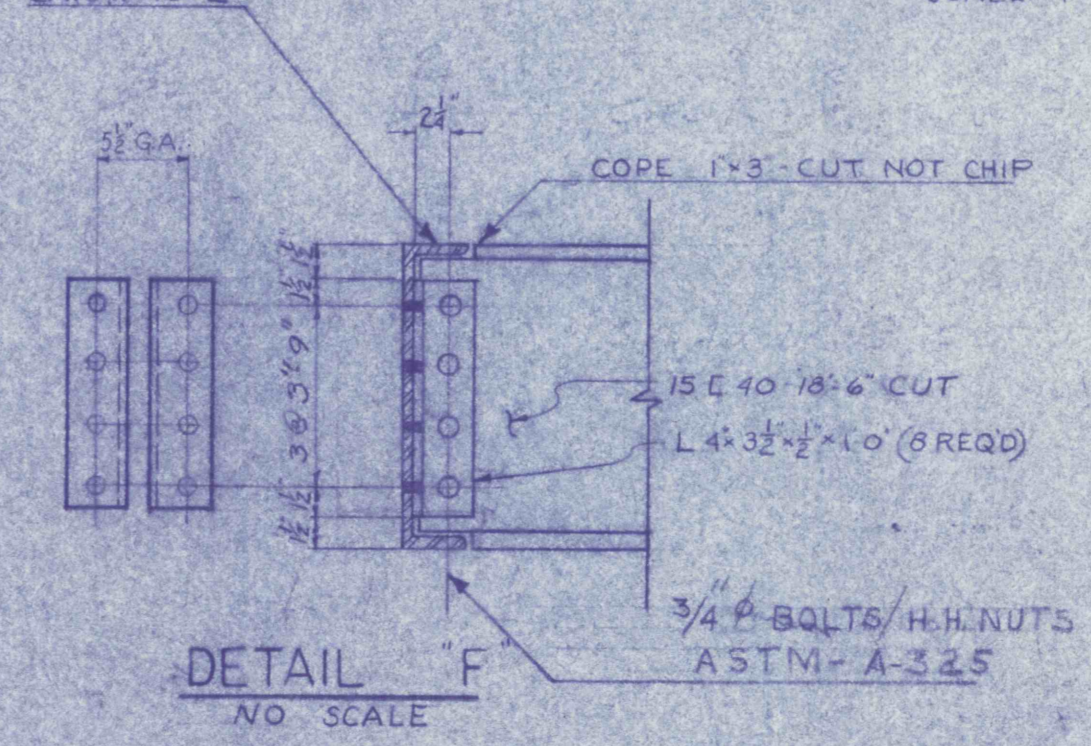
DETAIL E
NO SCALE



SECTION D-D
SCALE: 1/2"=1'-0"



DETAIL OF WEIR & BUTT PLATE
SCALE: 1"=1'-0"



DETAIL F
NO SCALE



REVISIONS	

TYPICAL CLARIFIER - MECHANICAL

CONSTRUCTION OF TREATMENT FACILITIES FOR ACID MINE DRAINAGE
RAUSCH CREEK WATERSHED
 SCHUYLKILL COUNTY, PENNSYLVANIA

ANTHRACITE
 RESEARCH & DEVELOPMENT CO. INC.
 consulting engineers TAMAGUA
 POTTSVILLE PENNSYLVANIA

JOB NO. 68195
 DATE: NOV 1987
 SCALE: AS NOTED
 DRAWN: A. STERNBERG
 APPROVED:

DRAWING NO.
C-17