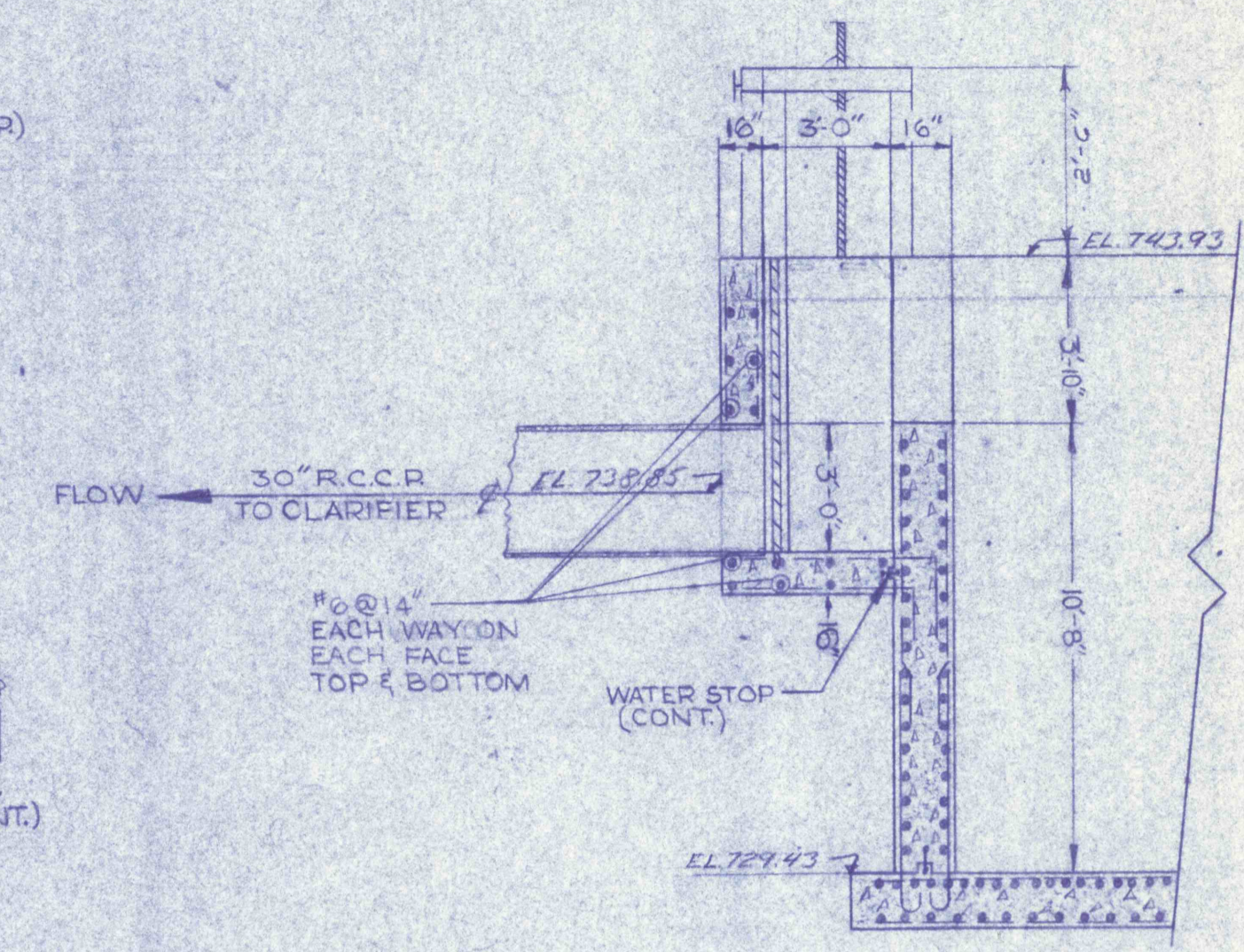
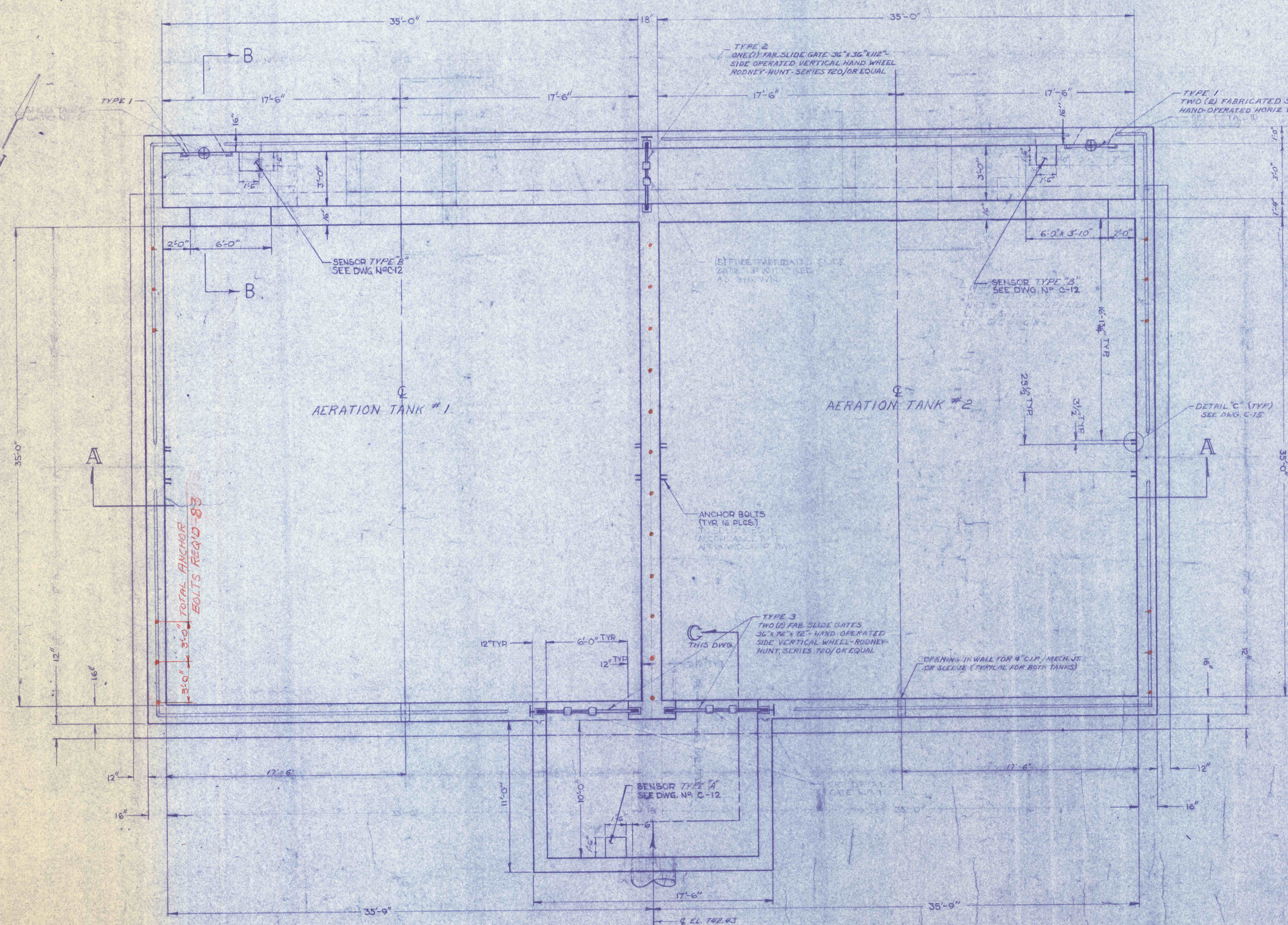


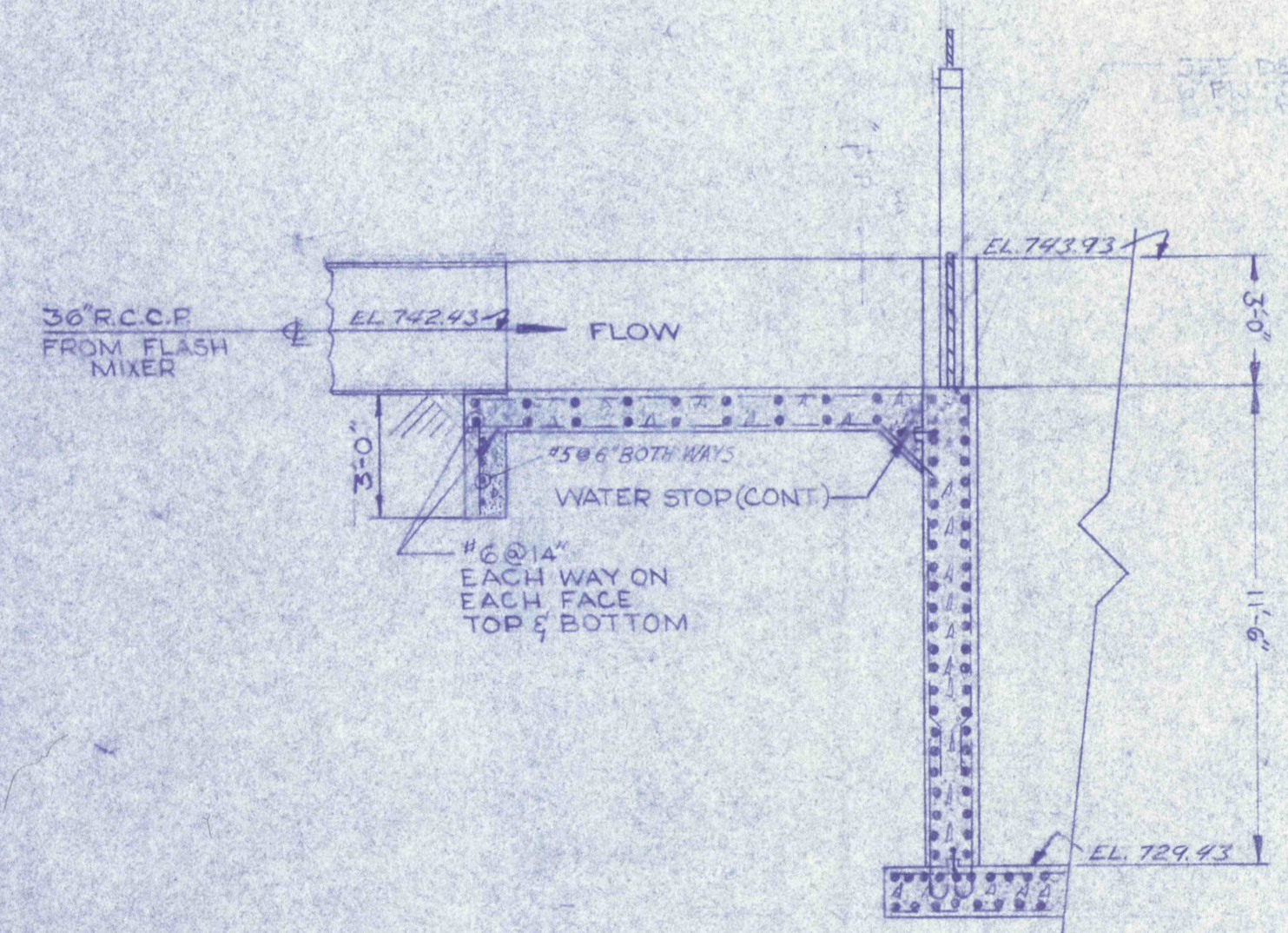
SECTION A-A
SCALE 1/4"=1'



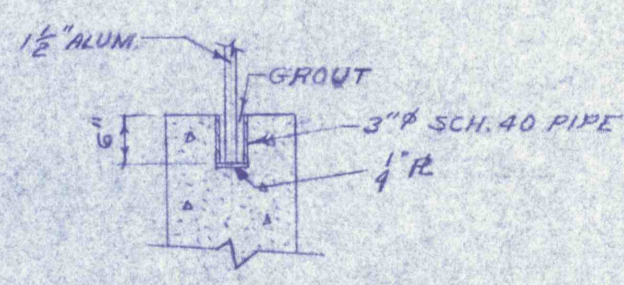
SECTION B-B
SCALE 1/4"=1'



PLAN (SEE DWG. C-1 & C-2)
SCALE 1/4"=1'



SECTION C-C
SCALE 1/4"=1'



DETAIL A
SCALE 1/2"=1'-0"

GENERAL NOTES

1. ALL CONSTRUCTION JOINTS BELOW WATER LEVEL TO HAVE 9" WATER STOP CONTINUOUS.
2. REFER TO DWG. N.P.C-15 FOR MECHANICAL DETAILS.
3. SUB-SOIL MUST BE UNIFORMLY WELL COMPACTED. A 6" BASE COURSE OF WELL COMPACTED CRUSHED STONE OR GRAVEL MUST BE PROVIDED BEFORE THE SLAB IS POURED.
4. ALL PIPES THRU WALLS OR SLAB BELOW WATERLEVEL SHALL HAVE MECH. JT. OR SLEEVE.

REVISIONS AREATION TANKS NO. 1&2 - STRUCTURAL CONSTRUCTION OF TREATMENT FACILITIES FOR ACID MINE DRAINAGE RAUSCH CREEK WATERSHED SCHUYLKILL COUNTY, PENNSYLVANIA		JOB NO. 6803 DATE: NOV. 1969 SCALE: NOTED DRAWN: J. HUNTER APPROVED: E. L. B.
ANTHRACITE RESEARCH & DEVELOPMENT CO. INC. consulting engineers POTTSVILLE PENNSYLVANIA		DRAWING NO. C-14

