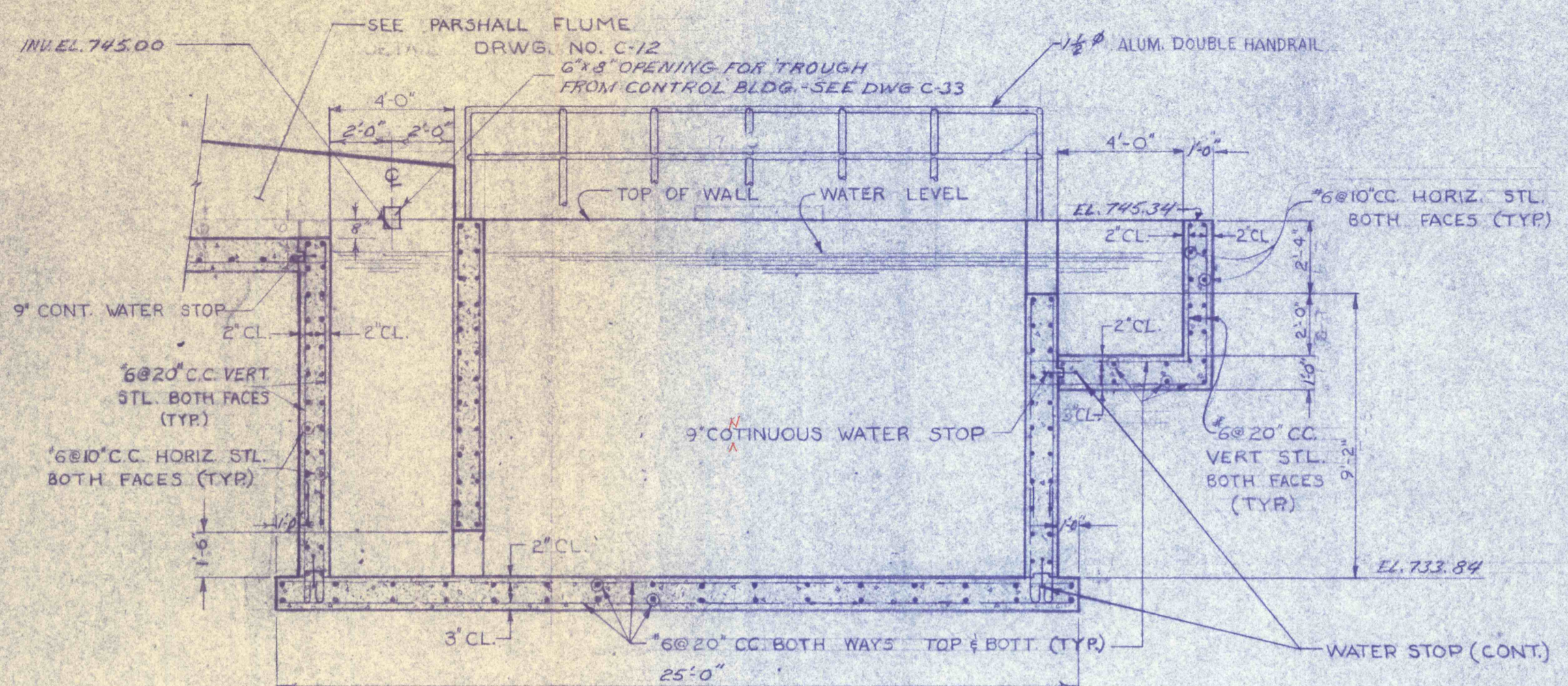
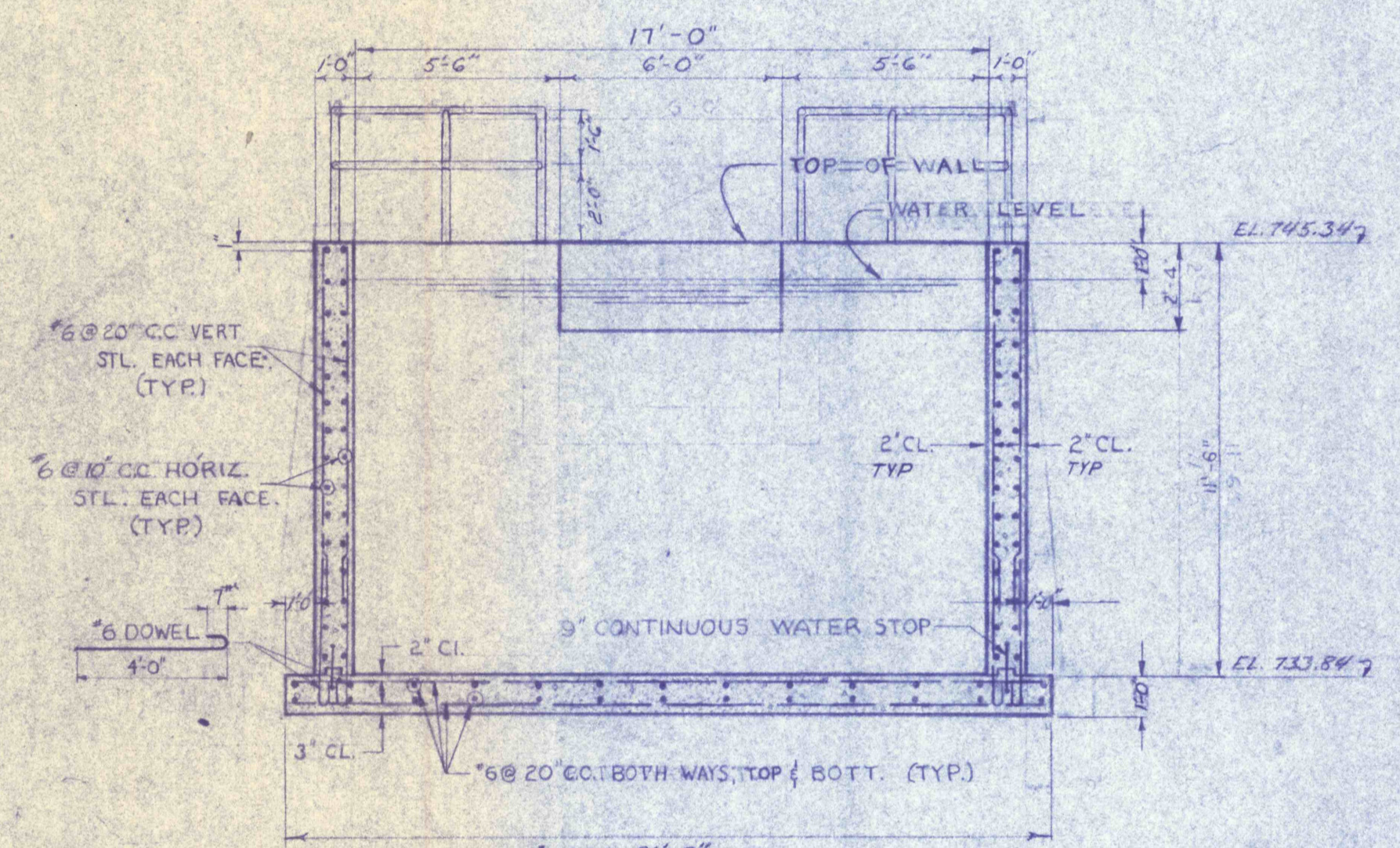


GENERAL NOTES

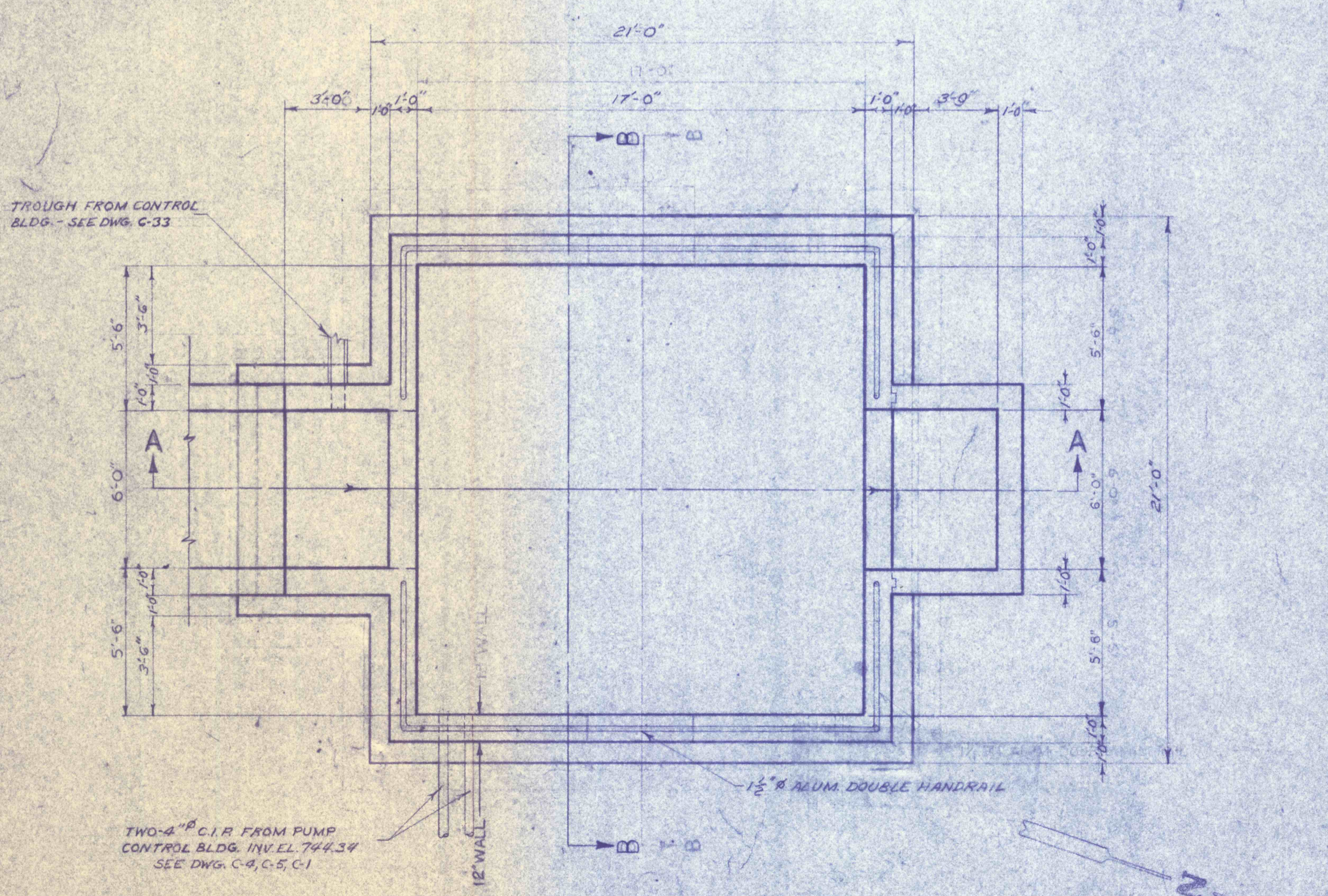
- ① ALL TANKS HOLDING LIQUID - ALL CONSTRUCTION JOINTS BELOW WATER LEVEL TO HAVE 9" CONTINUOUS WATERSTOPS.
- ② MECH. JOINT OR SLEEVE FOR ALL PIPES THRU WALLS OR SLABS BELOW WATERLEVEL.



SECTION A-A
SCALE: 3/4" = 1'-0"

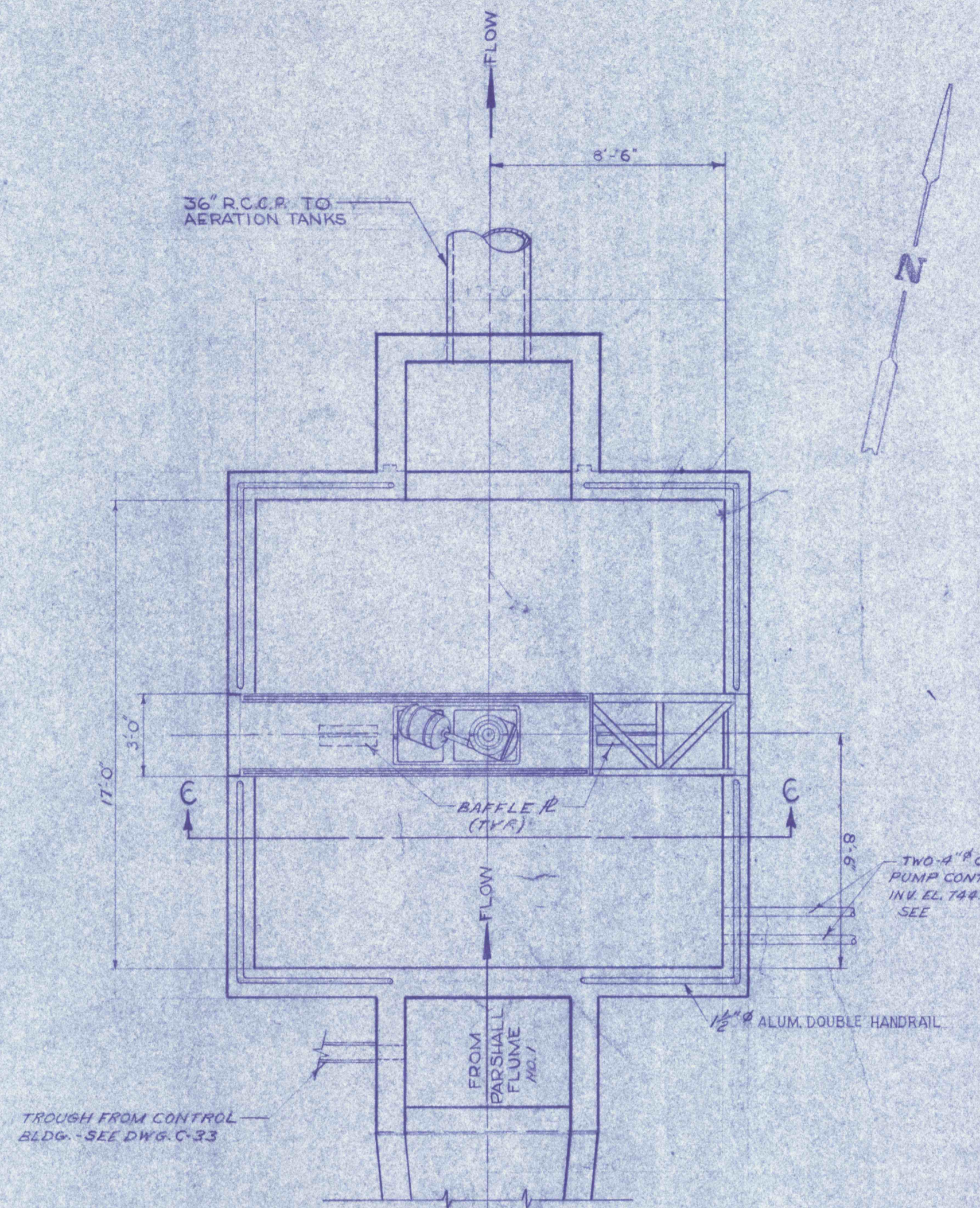


SECTION B-B
SCALE: 3/4" = 1'-0"

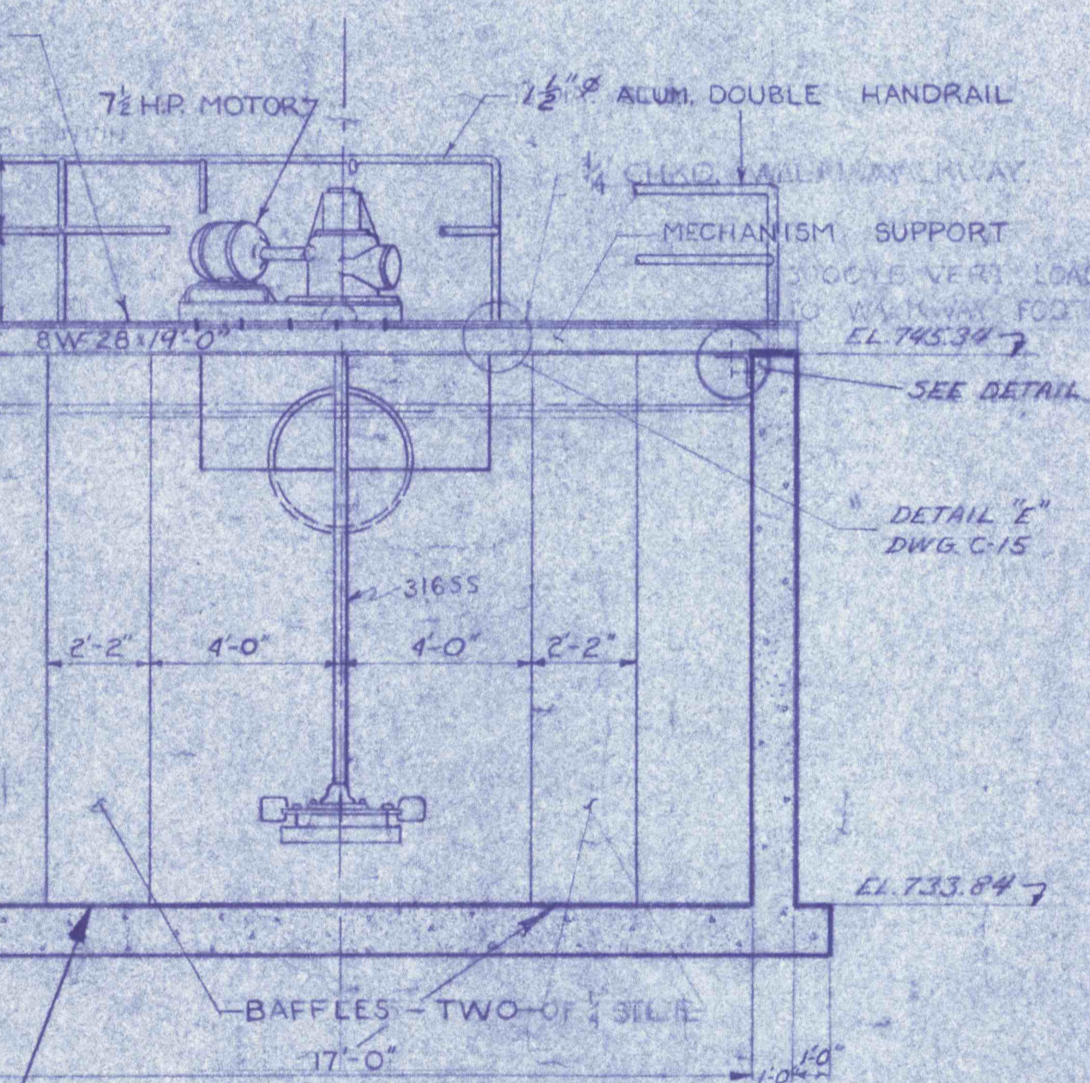


PLAN (SEE DWG. C-1 & C-2)
SCALE: 3/4" = 1'-0"

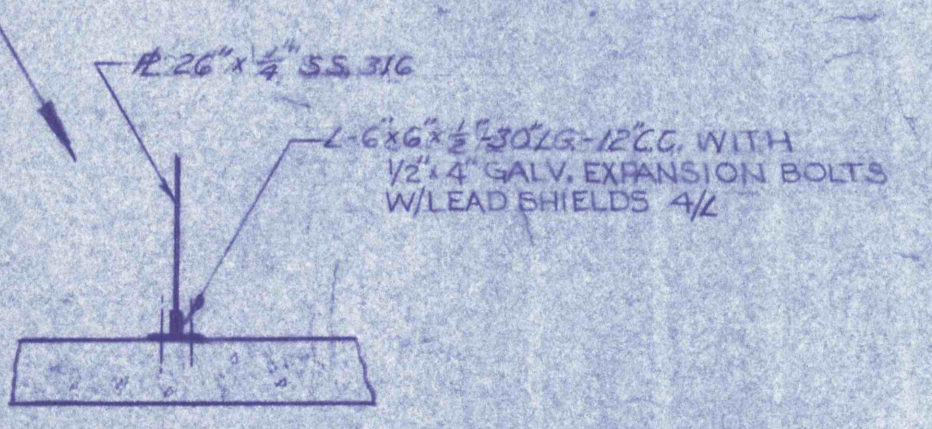
STRUCTURAL



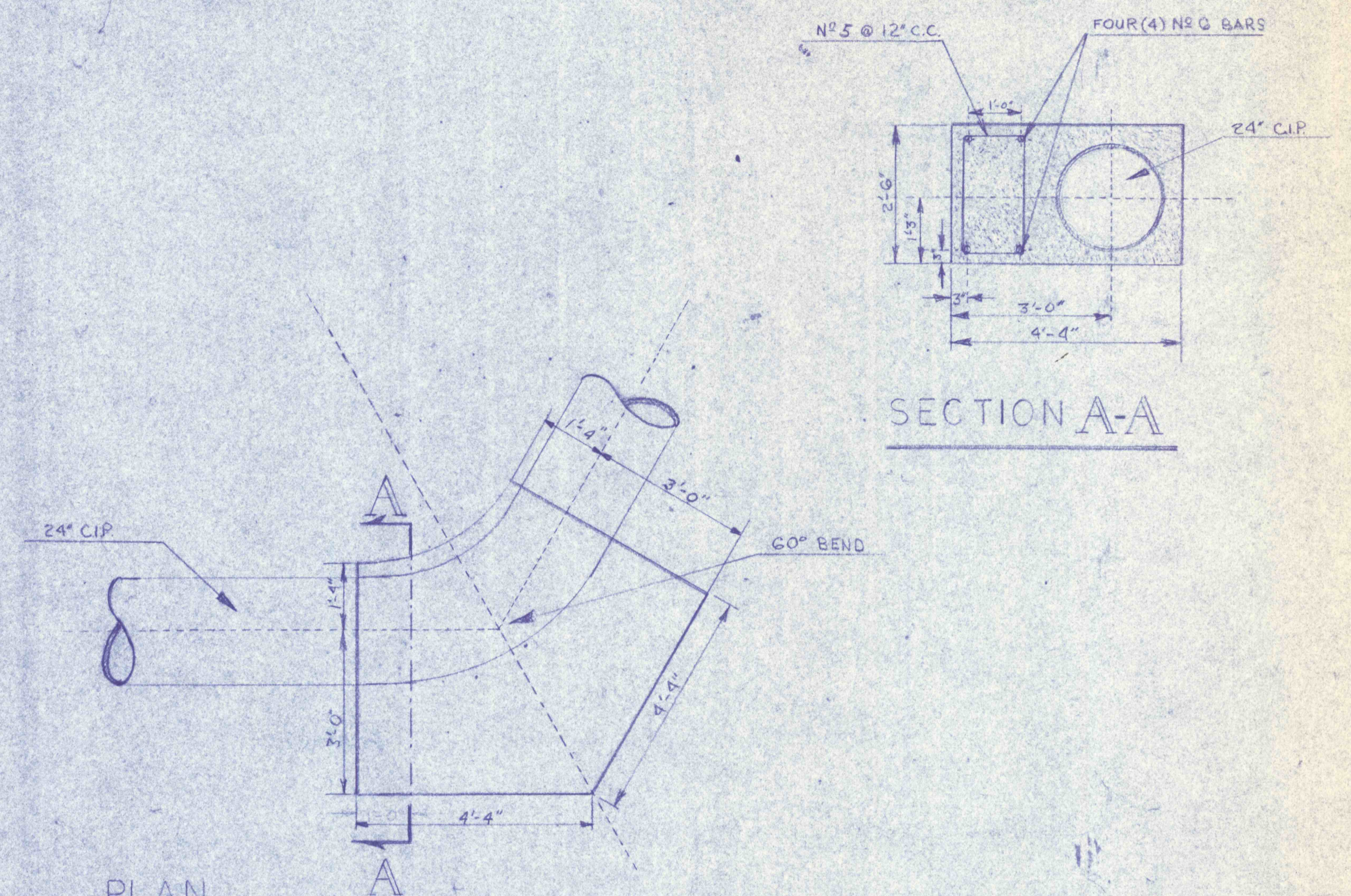
PLAN - DWG-C-1
SCALE: 3/4" = 1'-0"



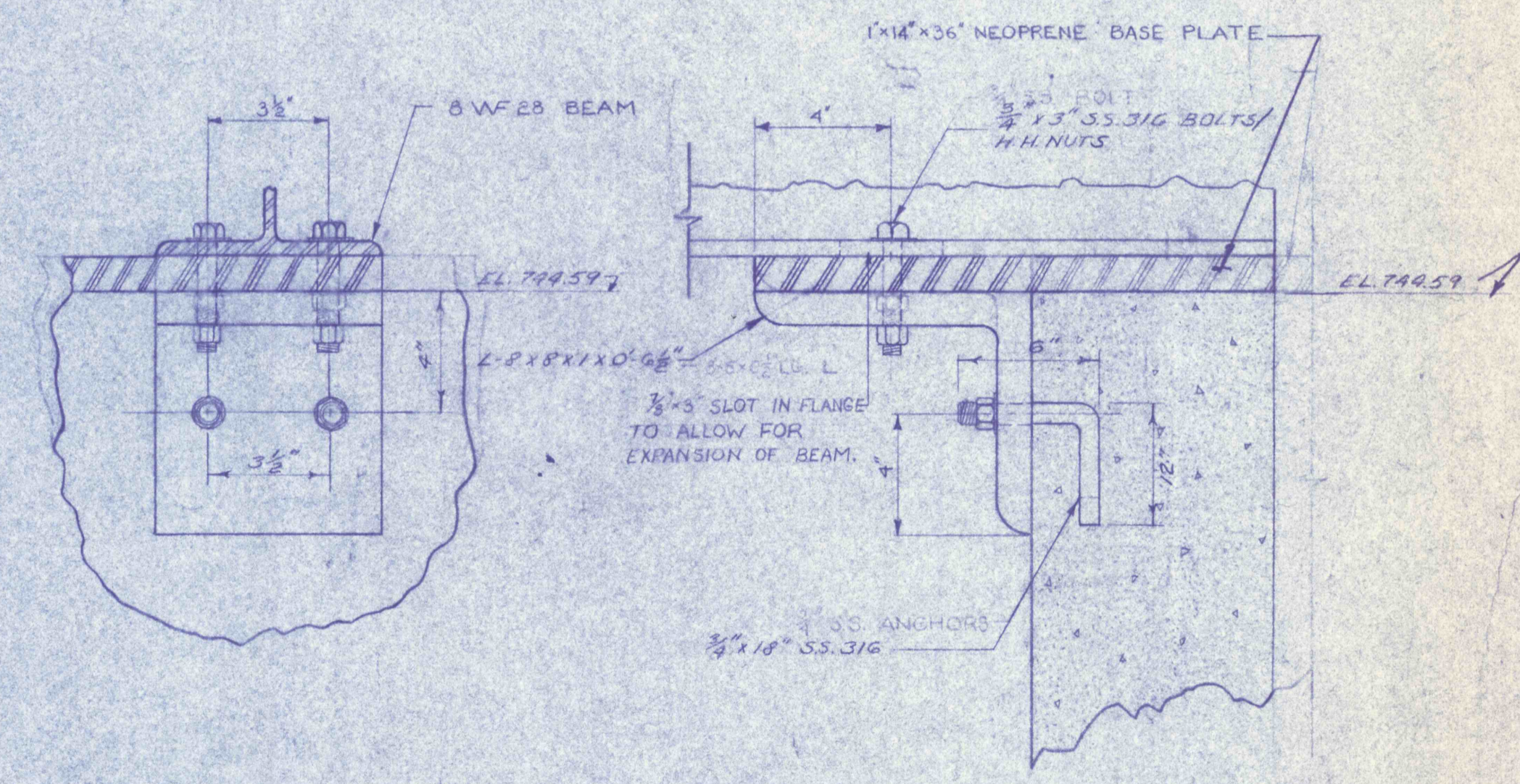
SECTION C-C
SCALE: 3/4" = 1'-0"



MECHANICAL



THRUST BLOCK DETAIL
SCALE: 1/2" = 1'-0"



DETAIL NO. 1
NO SCALE
SCALE: 1/2" = 1'-0"



REVISIONS	

FLASH MIXER - MECH. & STRUCTURAL	
CONSTRUCTION OF TREATMENT FACILITIES FOR ACID MINE DRAINAGE RAUSH CREEK WATERSHED SCHUYLKILL COUNTY, PENNSYLVANIA	
JOB NO: 6865	DATE: NOV. 1969
SCALE: AS NOTED	DRAWN: R.S.S.
APPROVED: T.H.R.	
ANTHRACITE RESEARCH & DEVELOPMENT CO. INC. consulting engineers	
POTTSVILLE PENNSYLVANIA	TAMAQUA PENNSYLVANIA
C-13	