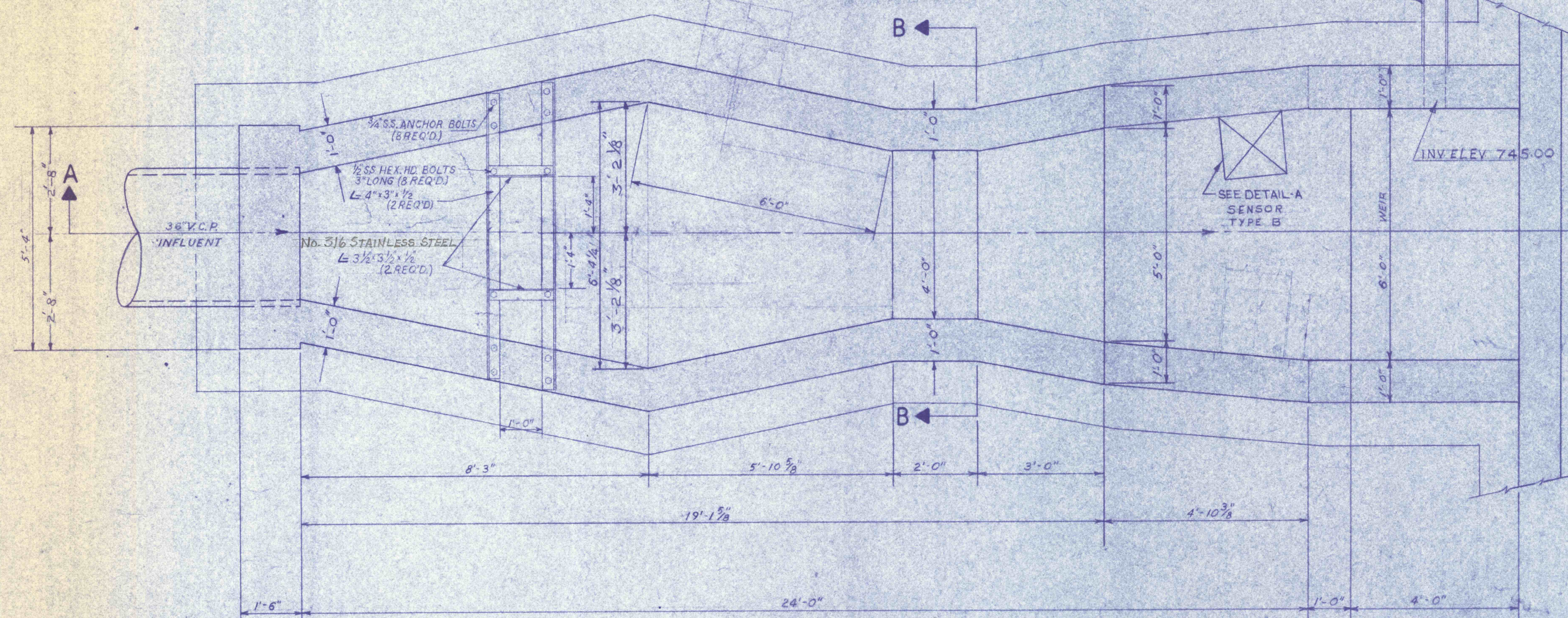
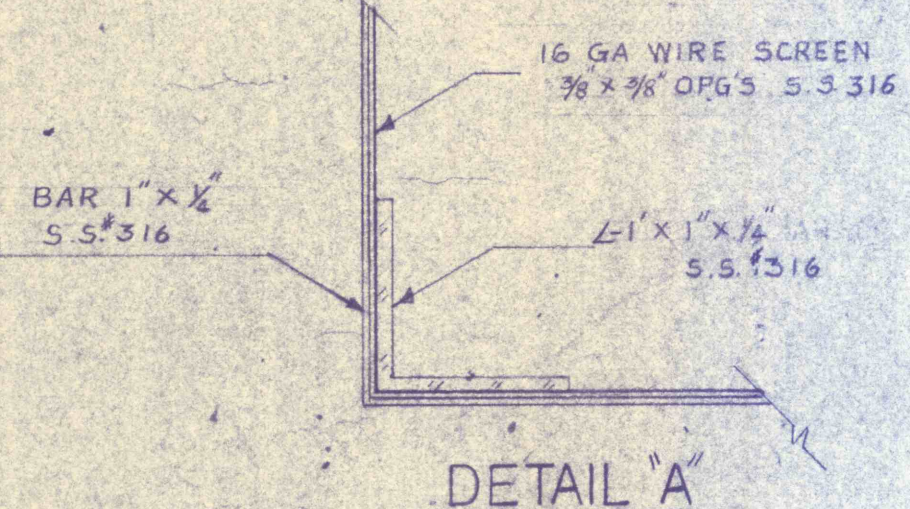


GENERAL NOTES:  
 1. ALL CONSTRUCTION JOINTS BELOW WATER LEVEL TO HAVE 5' WATER STOP CONTINUOUS.  
 2. REFER TO DWG NO. C-1 FOR LOCATION OF PARSHALL FLUME.  
 3. REFER TO DWG NO. C-2 FOR ELECTRICAL DETAILS OF FLOWMETER.  
 4. SENSOR BASKET VARIABLE IN HEIGHT ACCORDING TO VARIOUS DEPTHS OF TANKS. SEE DETAIL 'A' THIS DRAWING.

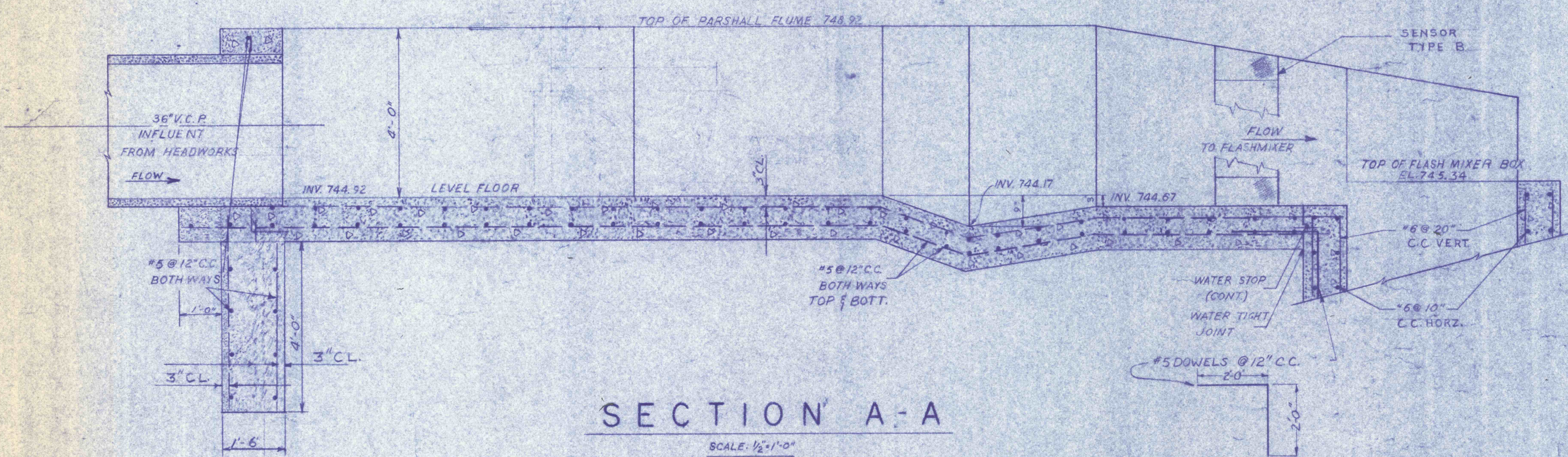
SEE DWG C-33



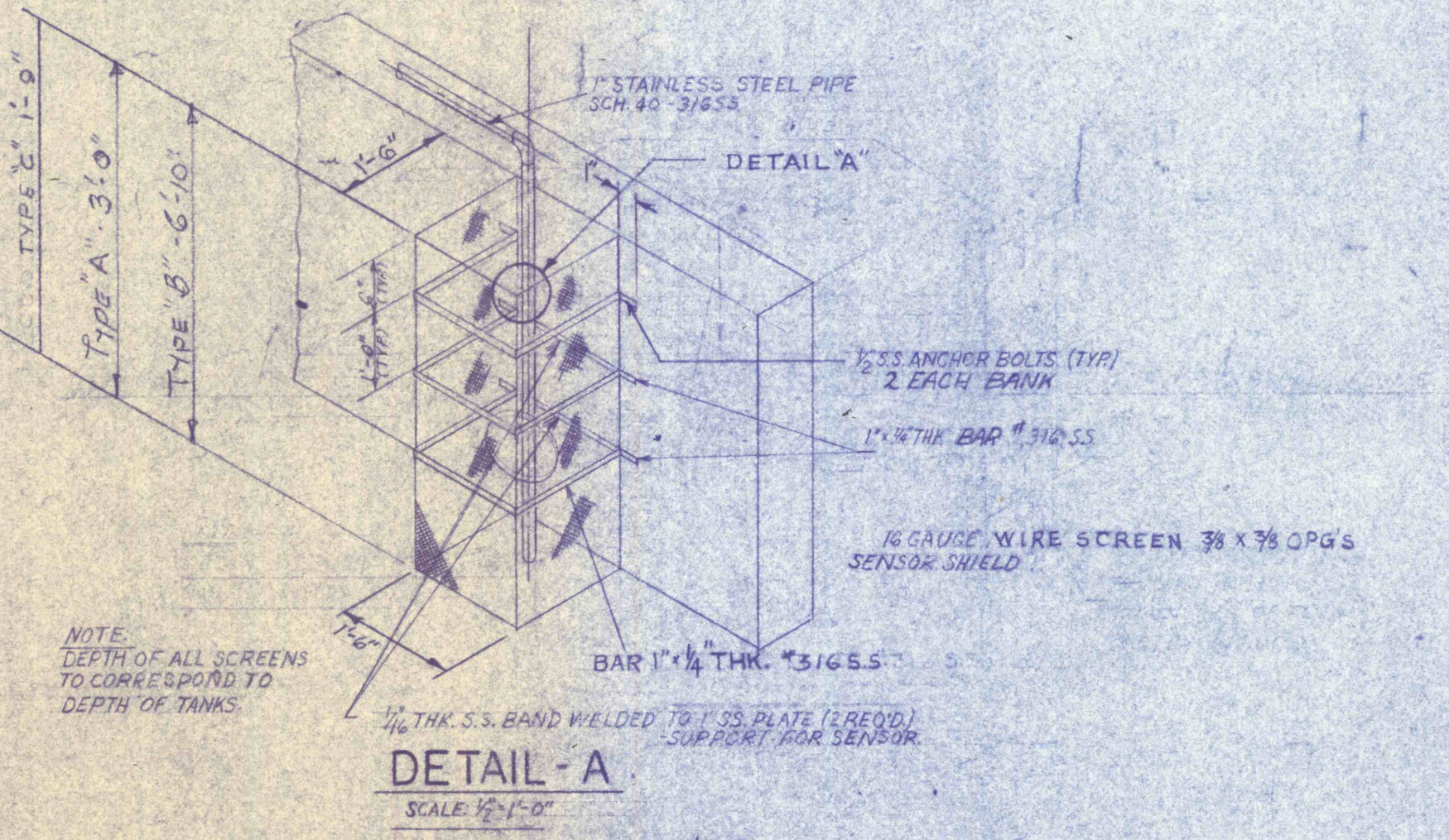
PLAN  
 SCALE 1/8"=1'-0"



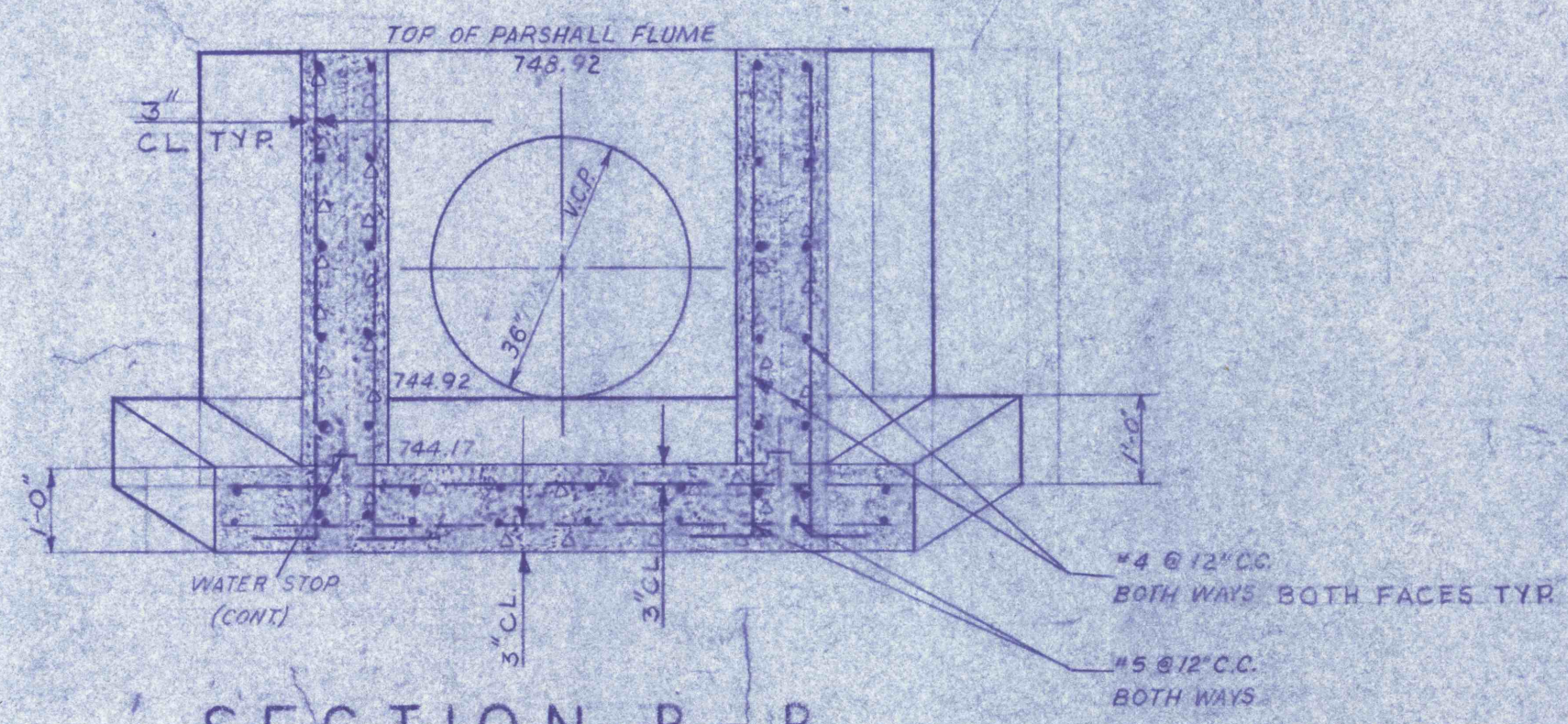
DETAIL 'A'



SECTION A-A  
 SCALE 1/2"=1'-0"



DETAIL 'A'

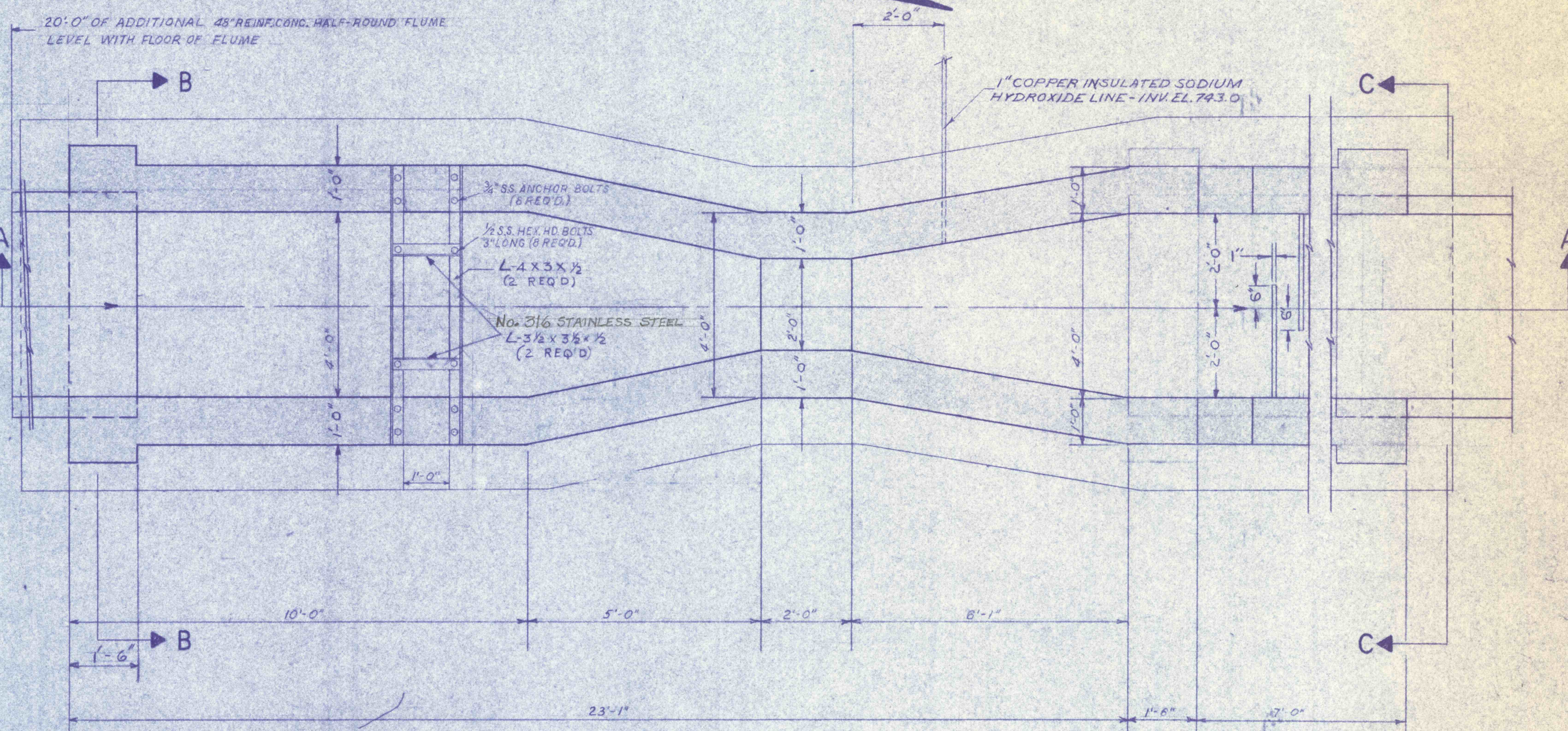


SECTION B-B  
 SCALE 1/2"=1'-0"

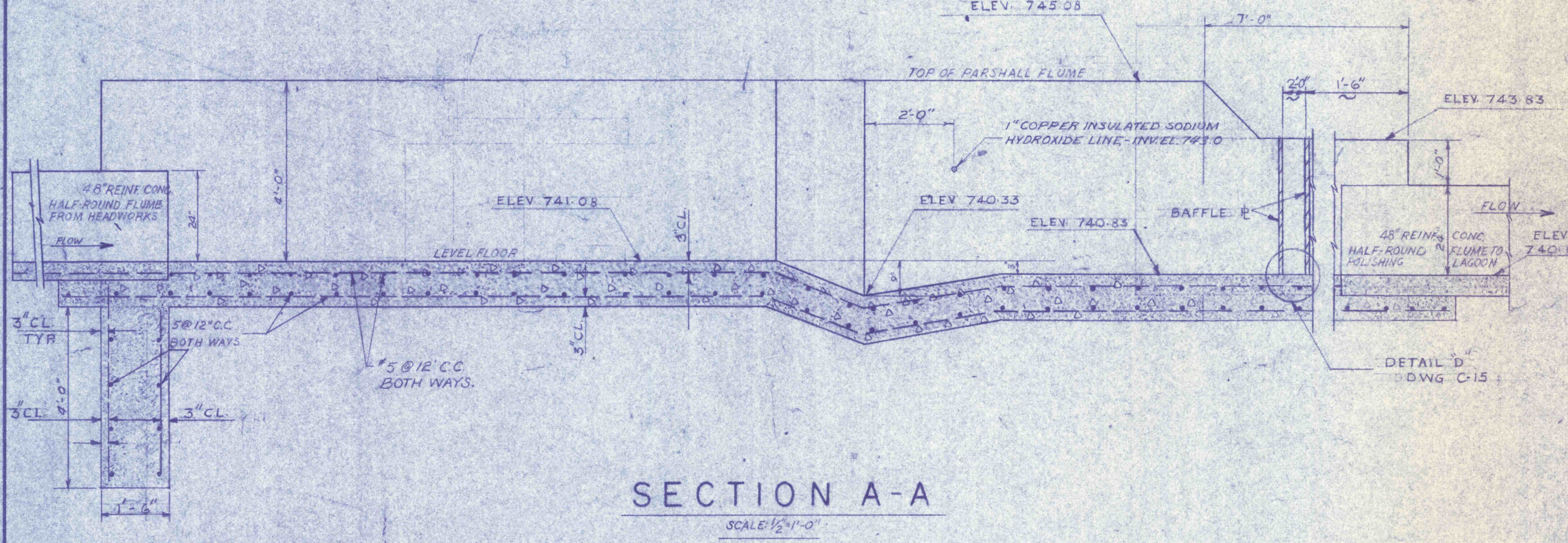
PARSHALL FLUME NO. 1

(SEE DWG C-1 & C-2 & C-4)

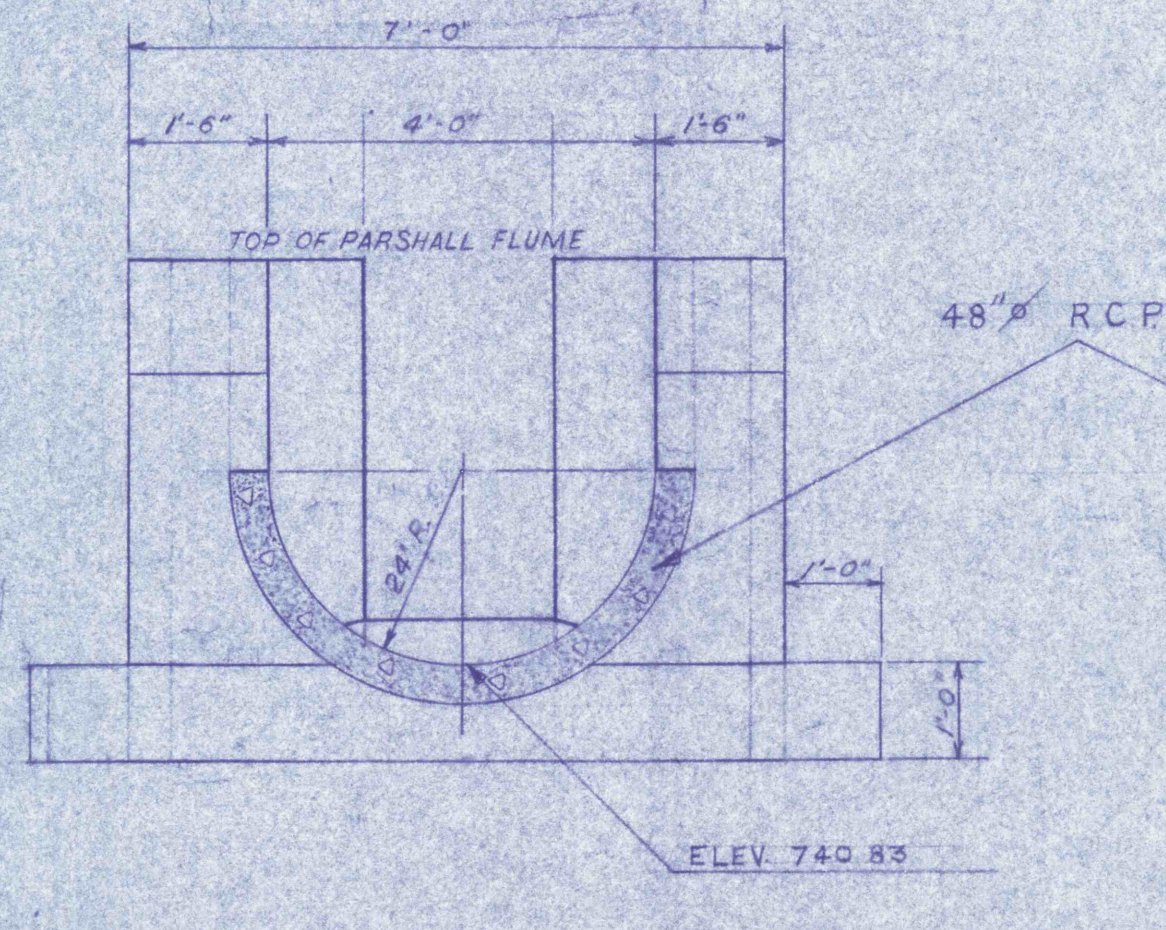
GENERAL NOTES:  
 1. ALL CONSTRUCTION JOINTS BELOW WATER LEVEL TO HAVE 5' WATER STOP CONTINUOUS.



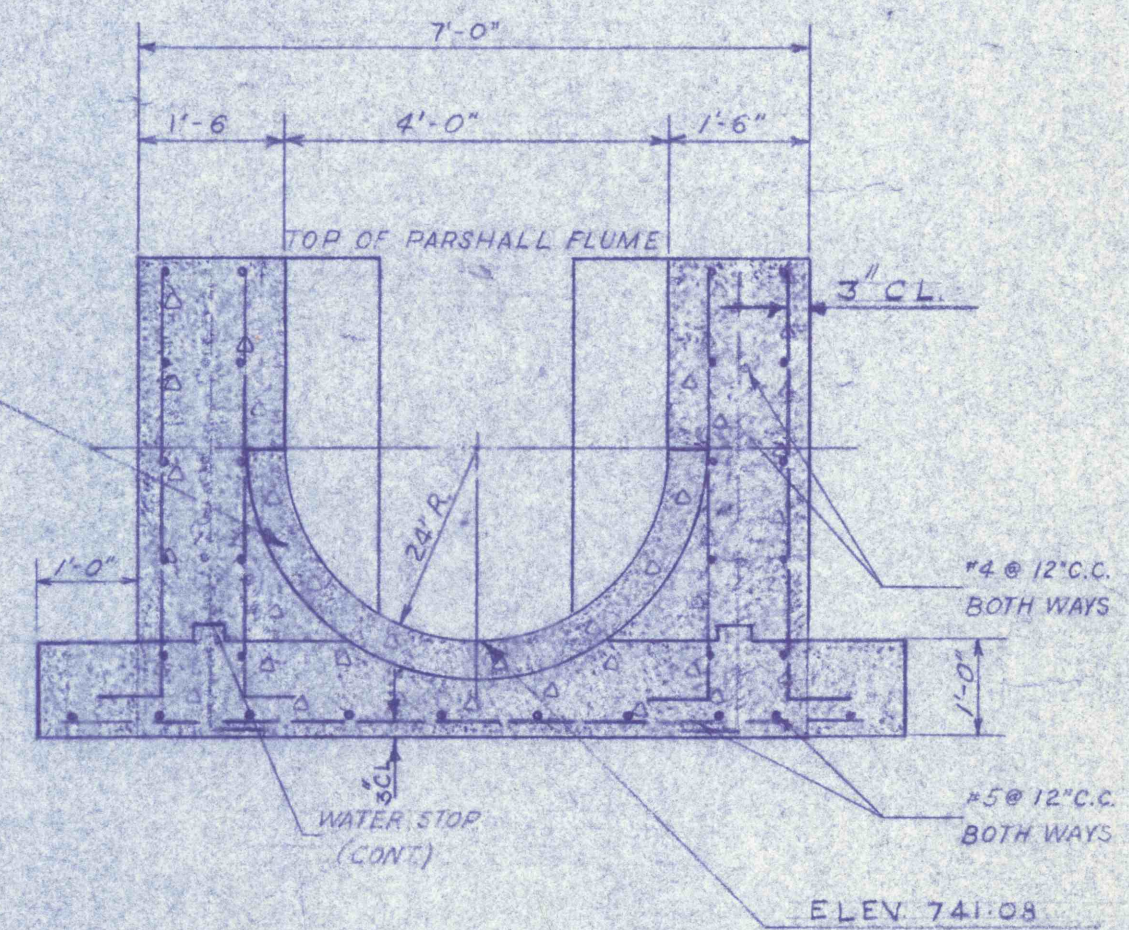
PLAN  
 SCALE 1/8"=1'-0"



SECTION A-A  
 SCALE 1/2"=1'-0"



SECTION C-C  
 SCALE 1/2"=1'-0"



SECTION B-B  
 SCALE 1/2"=1'-0"

PARSHALL FLUME NO. 2

(SEE DWG C-4 & C-1)



REVISIONS	
PARSHALL FLUMES NO. 1 & 2 STRUCTURAL AND MECHANICAL	
CONSTRUCTION OF TREATMENT FACILITIES FOR ACID MINE DRAINAGE RAUSCH CREEK WATERSHED SCHUYLKILL COUNTY PENNSYLVANIA	
JOB NO: 6805 DATE: NOV. 1969 SCALE: AS NOTED DRAWN: J.S.N. APPROVED: T.H.R. J.J.L.	DRAWING NO: <b>C-12</b>
ANTHRACITE RESEARCH & DEVELOPMENT CO. INC. consulting engineers POTTSVILLE PENNSYLVANIA TAMAGUA	