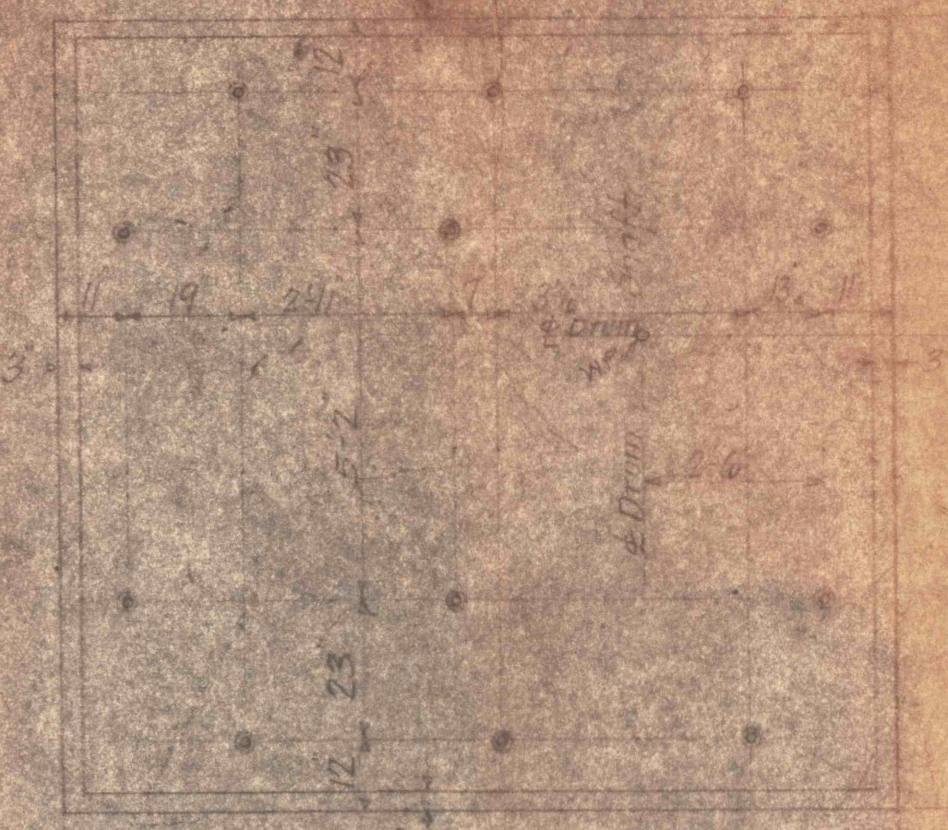


PLAN OF LOFT HOUSE
Scale 1/4" = 1'-0"

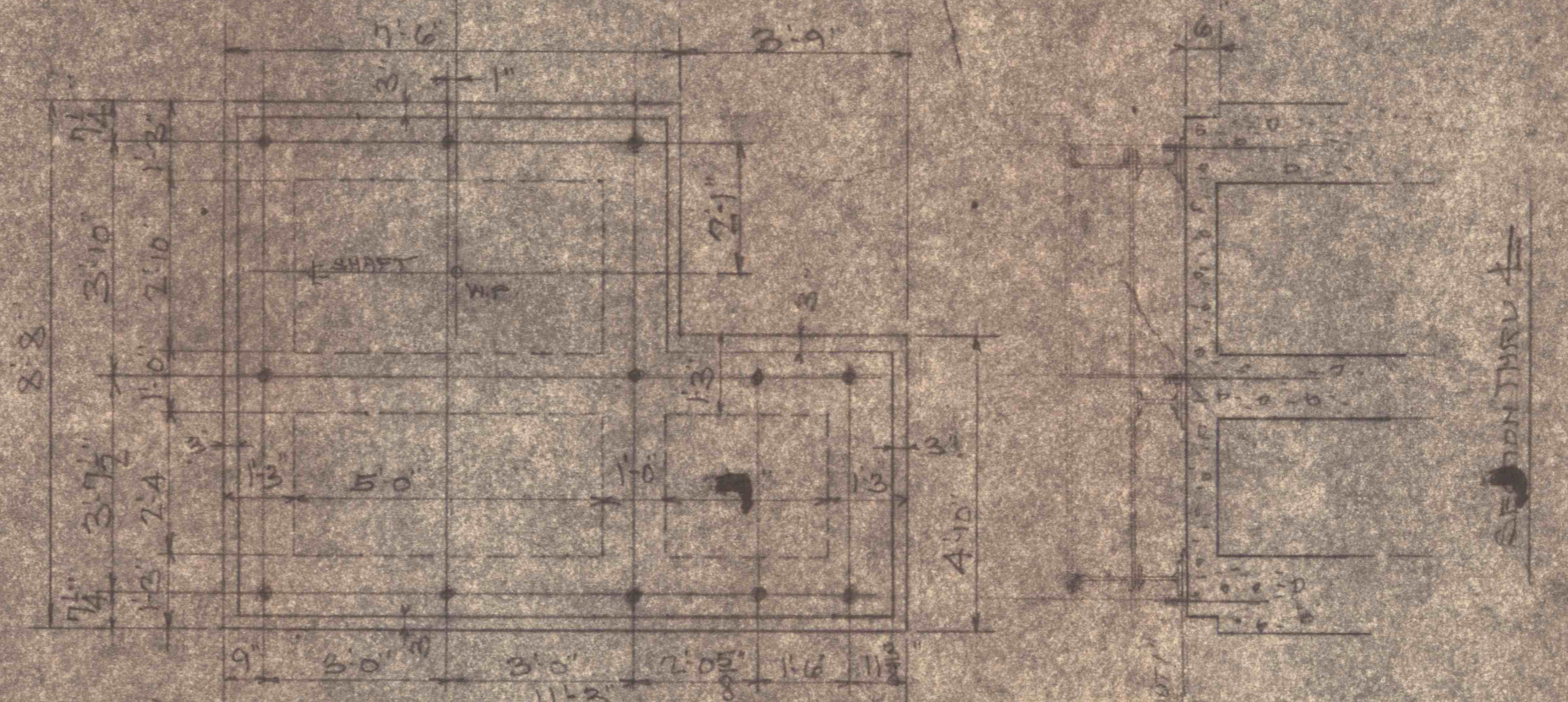


ELEVATION LOOKING WEST
Scale 1/4" = 1'-0"



FOUNDATION PLAN FOR 20-TON HOIST
Scale 1/4" = 1'-0"

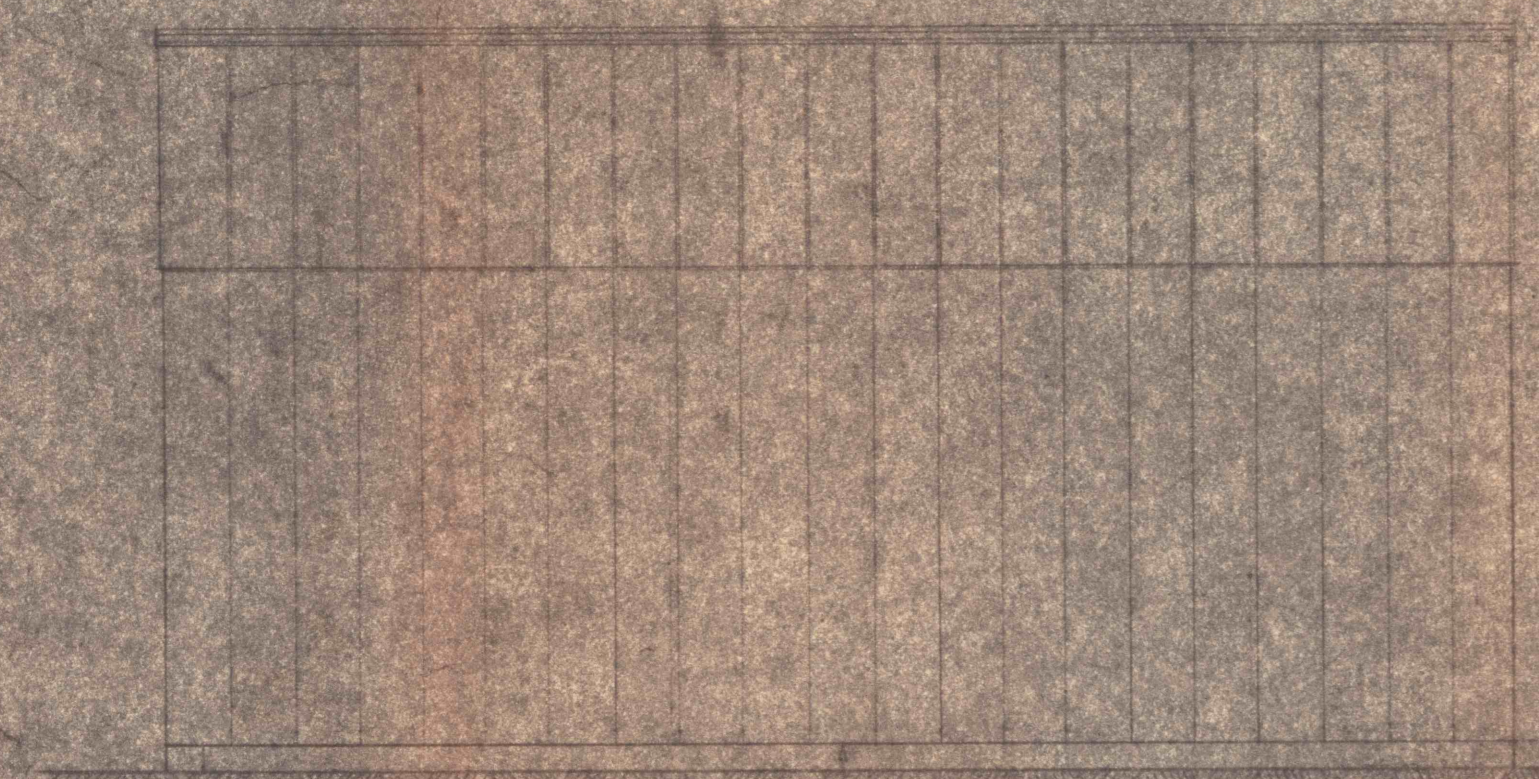
NOTES -
Furnish 12 #10 bars (Class #10) - 6" apart in
direction of span for the hoist.
Set a 4" bolt in place 4" in to allow for expansion.
Elev. of base of hoist should have allowed for limiting
locate base from this drawing.



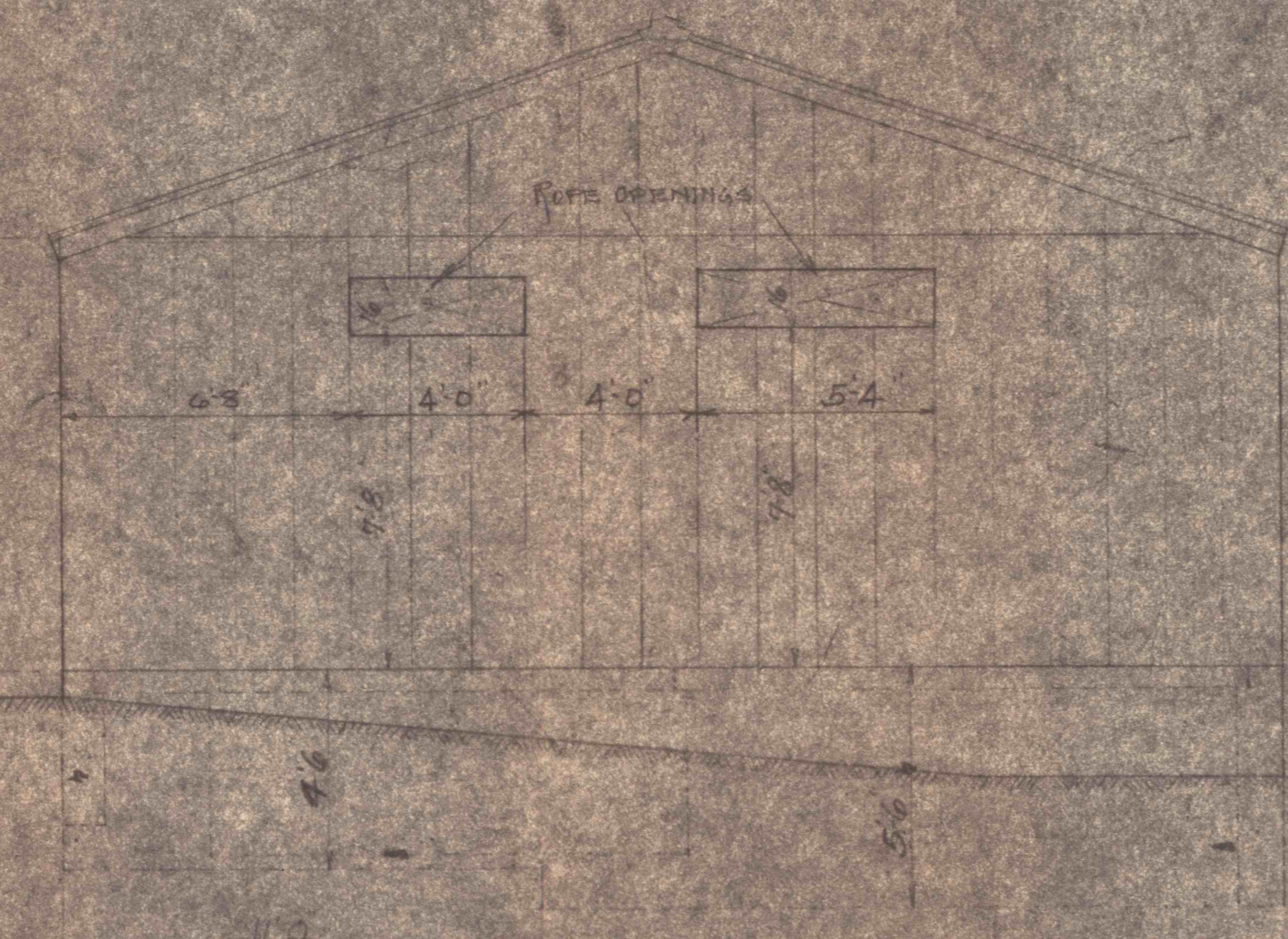
FOUNDATION FOR 60-TON HOIST



TYPICAL SECTION
(BUILDING WALL)



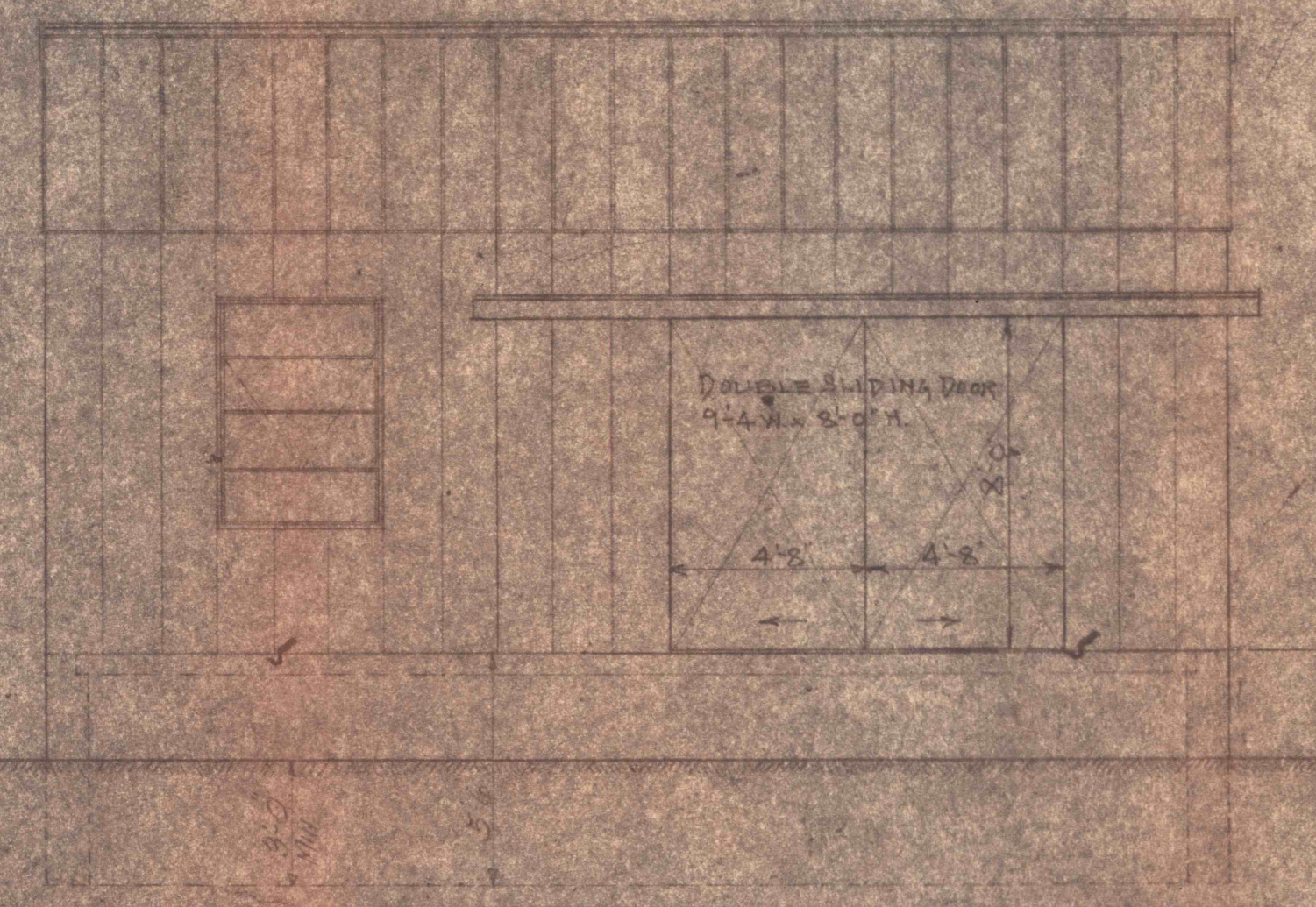
WEST ELEVATION



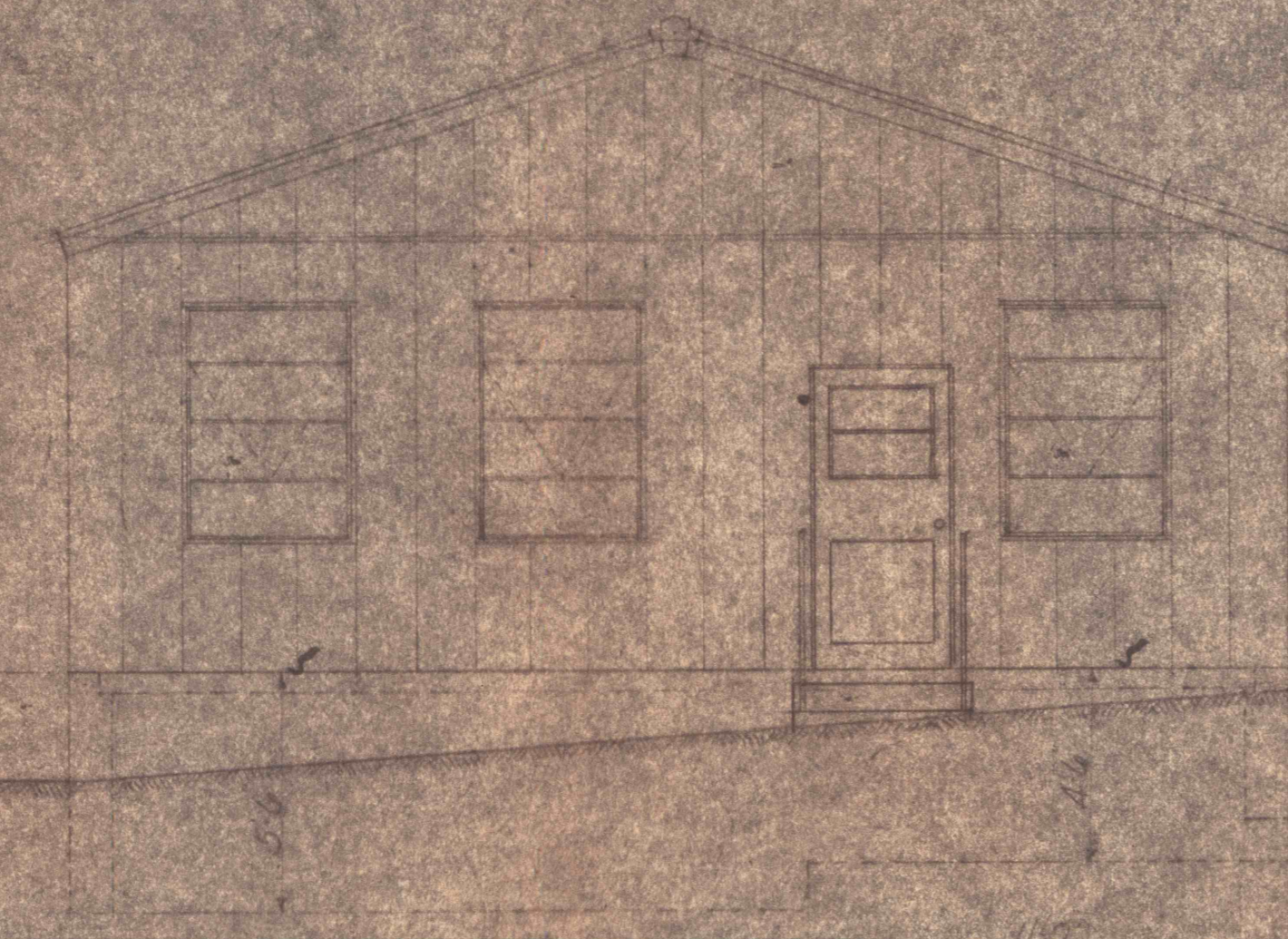
SOUTH ELEVATION



FOUNDATION BOLT DETAIL - 60 TON HOIST



EAST ELEVATION



NORTH ELEVATION

NOTE:
To be used in connection with
Architect's plan of the building.
WINDOWS - COMMERCIAL PROJECTED

REVISIONS -
① - ELEVATION TO ADD 4\"/>

LEHIGH COALE NAVIGATION CO.	
LANSDOWN, PA.	
MECH. DEPT.	
DESCRIPTION - HOIST HOUSE	
DRAWING NO. 4430	
DATE AUG. 1912	
DRAWN BY - [Name]	
CHECKED BY - [Name]	