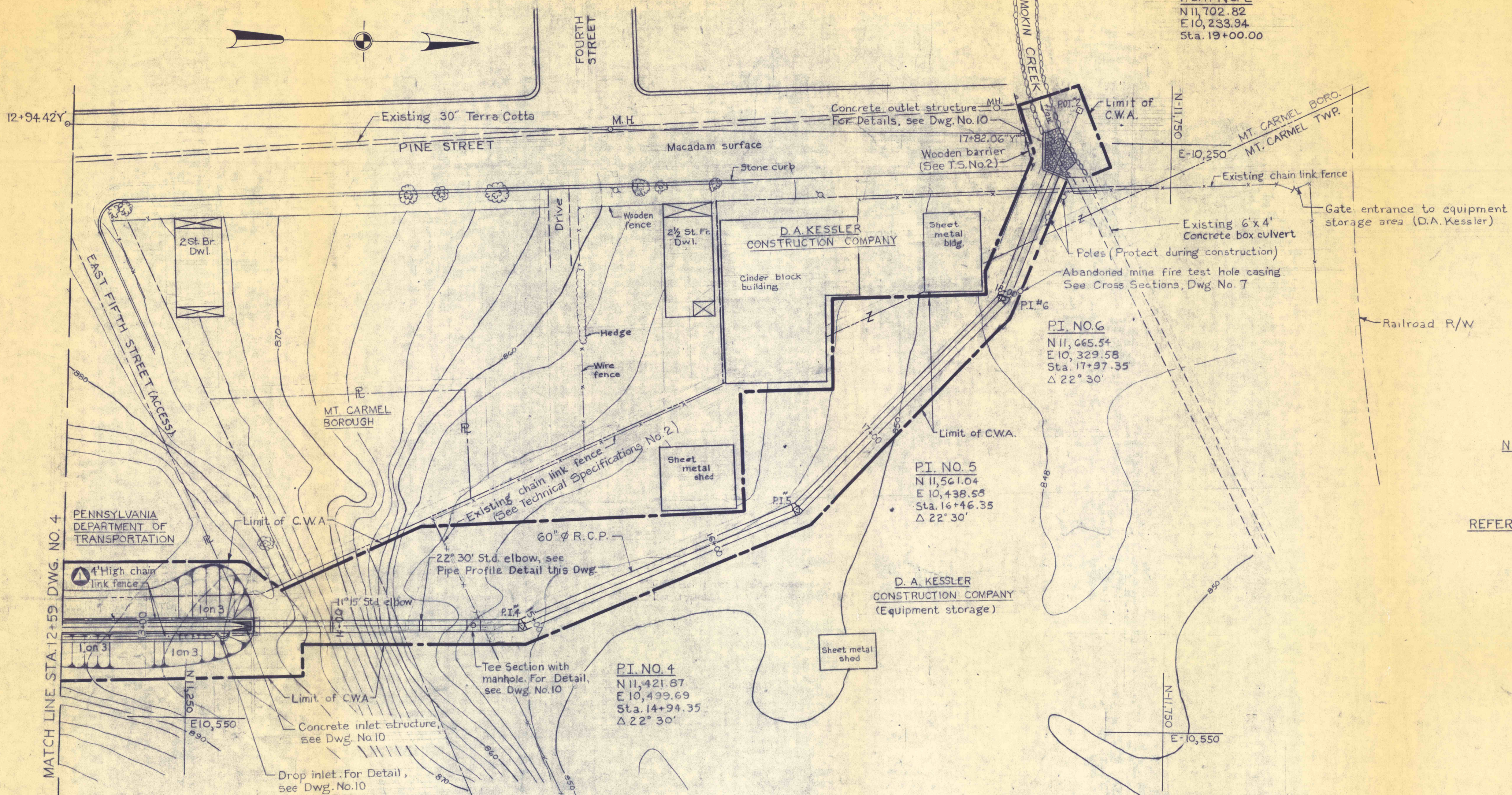


P.O.T. NO 2
N 11,702.82
E 10,233.94
Sta. 19+00.00

TRAVERSE DATA

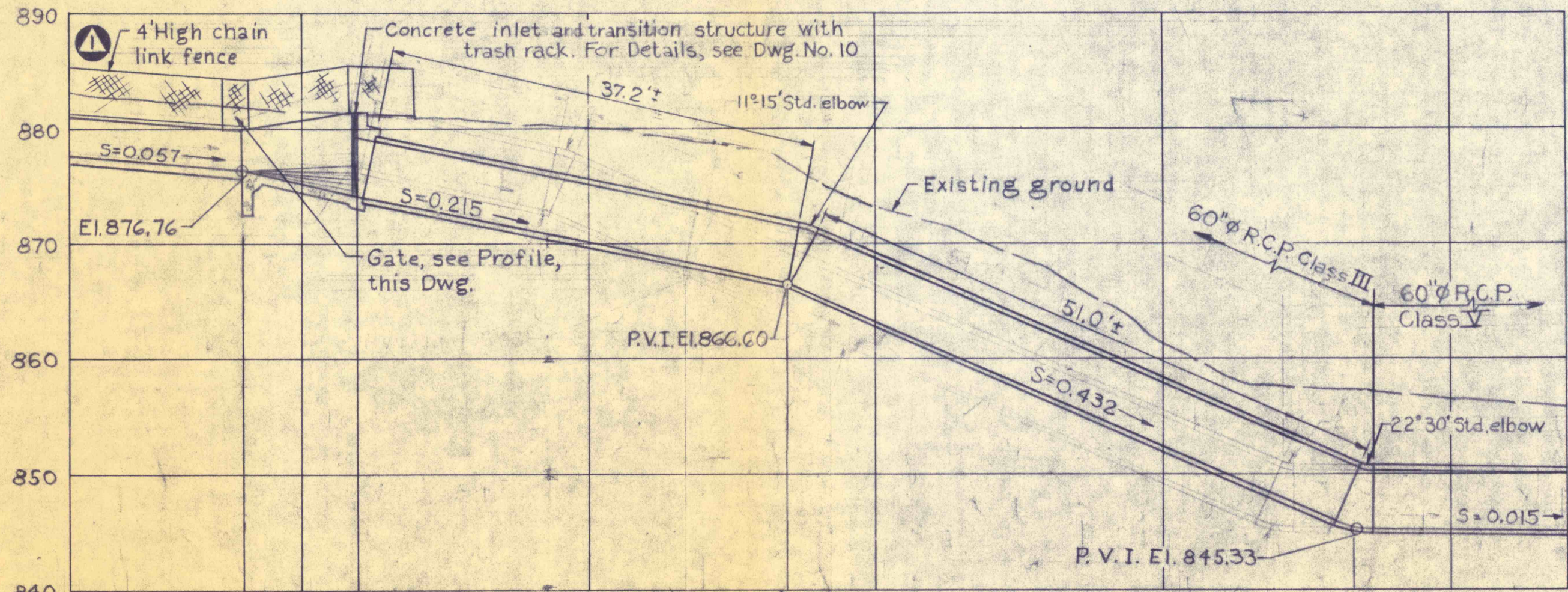
Traverse Station	Coordinates	
	North	South
12+94.42Y	11,186.04	10,247.20
17+82.06	11,673.61	10,245.66



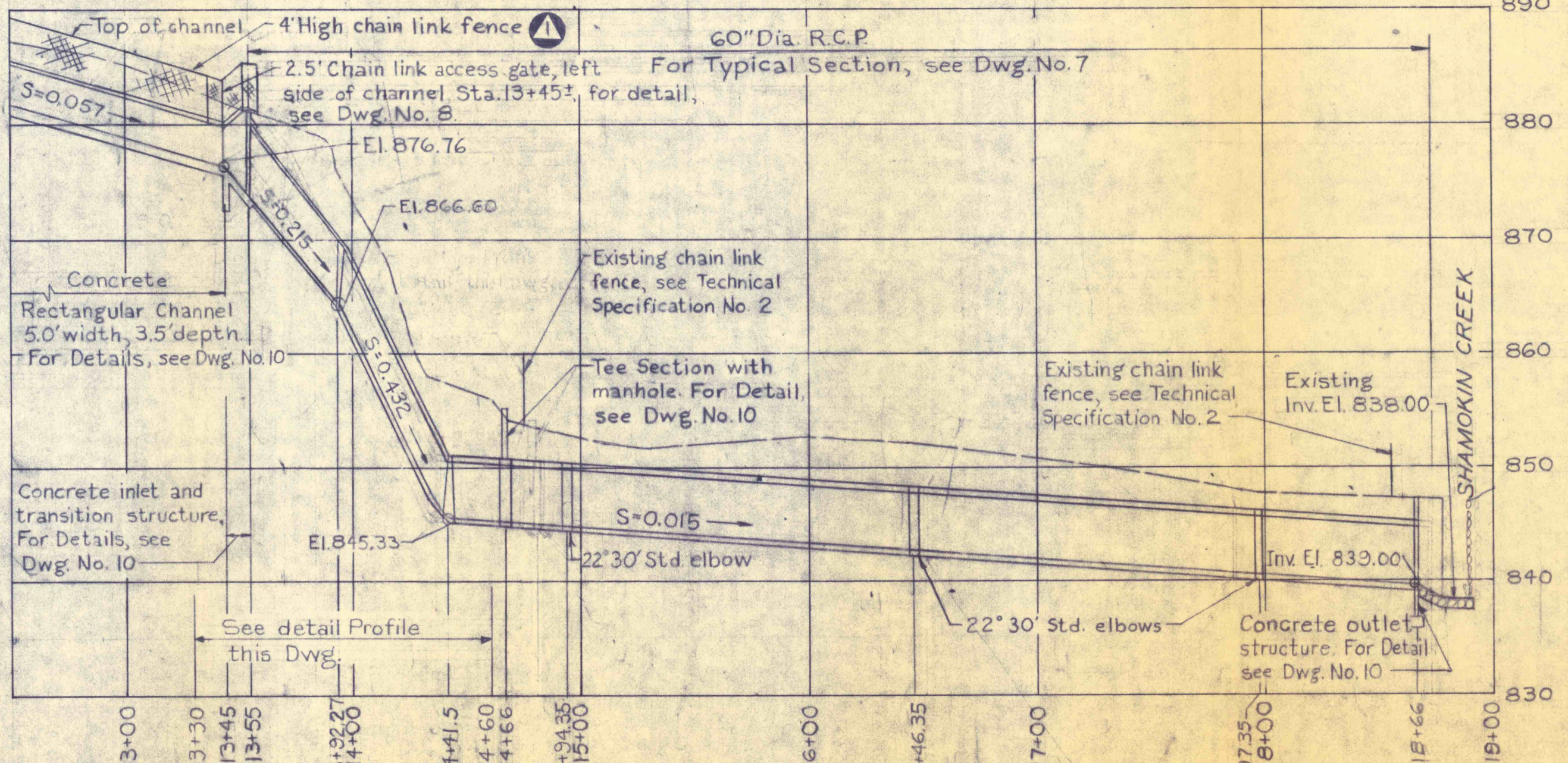
PLAN
Scale: 1 in = 30 ft.

NOTES:
1. For Concrete Notes, See Dwg. No. 8.

REFERENCES:
1. Cross Sections --- Dwg. No. 7
2. Details --- Dwg. No. 10



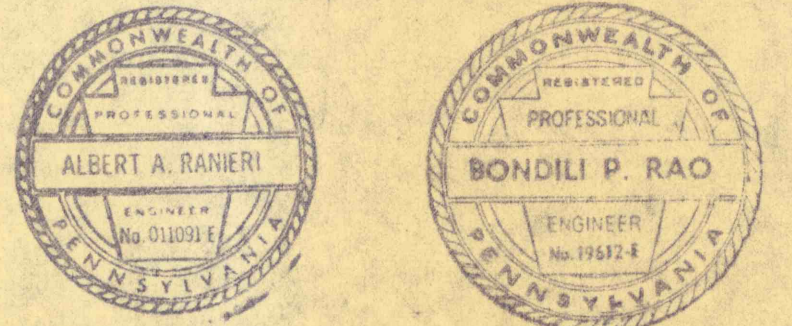
PIPE PROFILE DETAIL
Scale: 1 in = 10 ft.



PROFILE
Scale: Hor. 1 in = 50 ft.
Vert. 1 in = 10 ft.

NO.	DATE	REVISION	APPR.
1	19Apr76	Add chain link fence	PK

SUBMITTED
PROJECT CO-ORDINATOR
APPROVED
CHIEF - DIVISION OF MINE RECLAMATION
APPROVED
DIRECTOR - BUREAU OF DESIGN



COMMONWEALTH OF PENNSYLVANIA
DEPARTMENT OF ENVIRONMENTAL RESOURCES
OFFICE OF RESOURCES MANAGEMENT

CONTRACT NO. SL 113-3-1

MINE DRAINAGE POLLUTION ABATEMENT
MOUNT CARMEL
SHAMOKIN CREEK WATERSHED

NORTHUMBERLAND CO., PA.

PLAN AND PROFILE

DRAWN BY: LJC DATE: 6-12-75 DRAWING NO.:
CHECKED BY: Ecl SCALE: As shown 5 of 10