

TRAVERSE DATA

Traverse Station	Coordinates	
	North	East
5+70.23 Y	10,538.02	10,509.35
8+23.68 Y	10,791.36	10,501.93
9+28.75 Y	10,885.89	10,456.05
12+94.42 Y	11,186.04	10,247.20

BENCH MARK		
No.	Elevation	Location and description
1	920.40	Top of concrete headwall. Traverse Sta. 8+16.5, 44.0' Left.

Revised B.M. 1149.37  
 DER " 920.40  
 228.97 DIFF

NOTES:

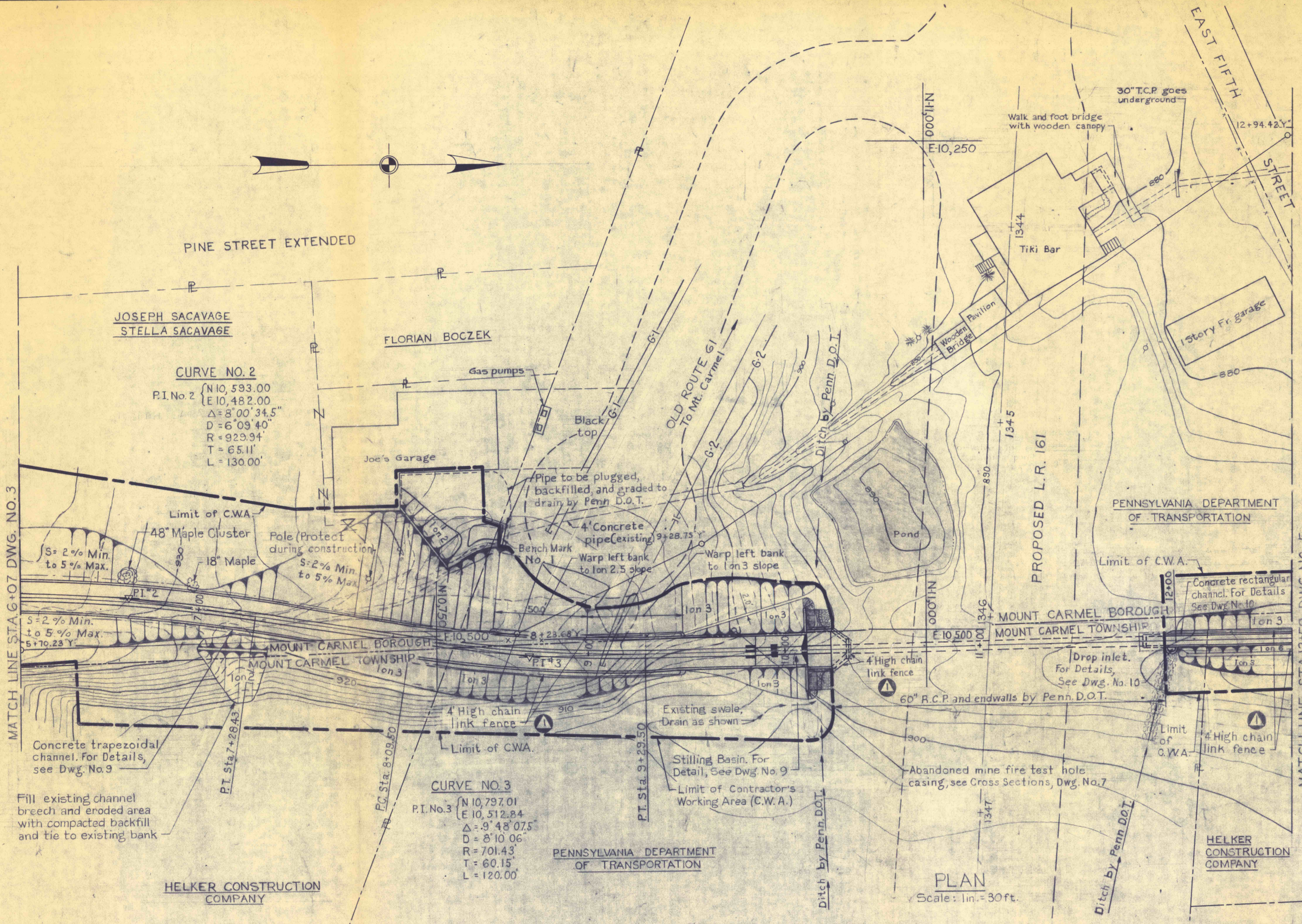
- 1. For Concrete Notes, see Dwg. No. 8.

REFERENCES:

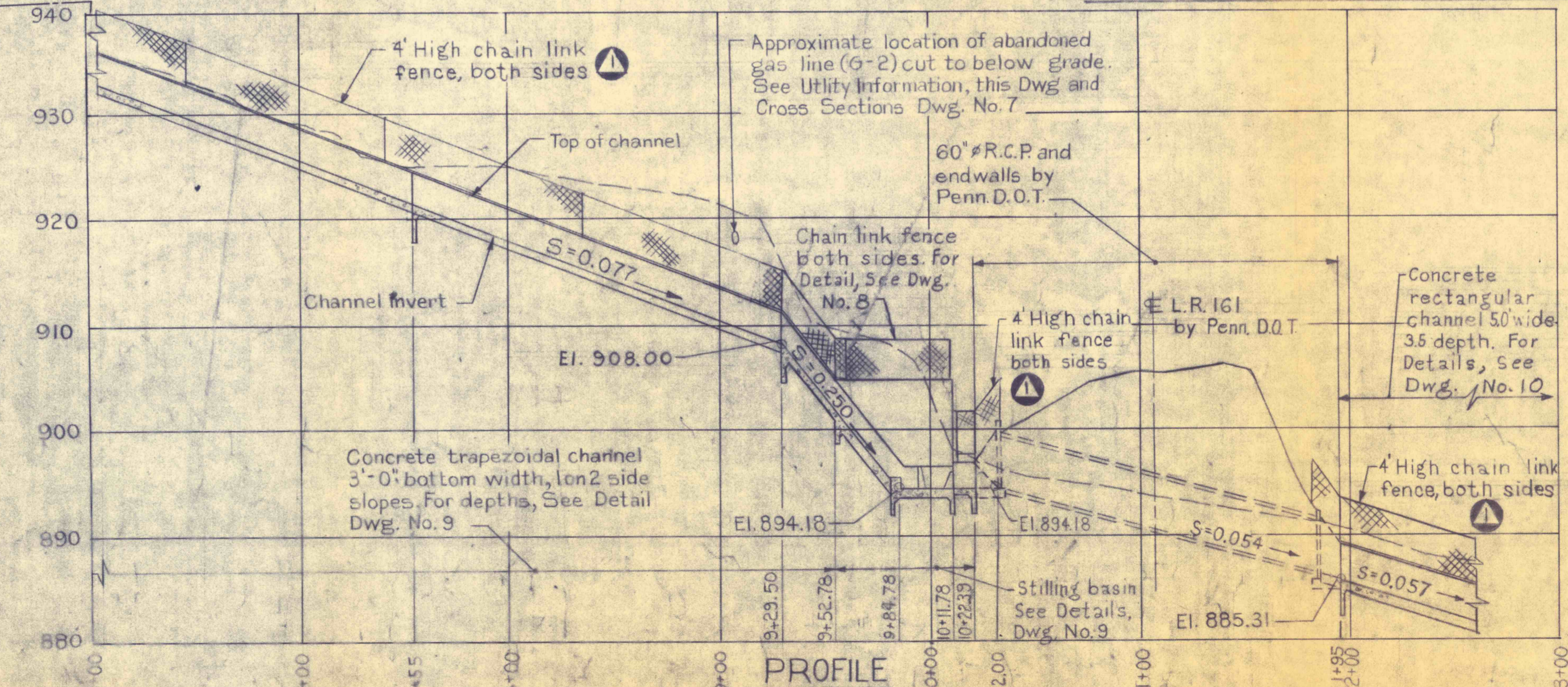
- 1. Cross Sections - Dwg. Nos. 6 and 7.
- 2. Details - Dwg. Nos. 9 and 10.

UTILITY INFORMATION

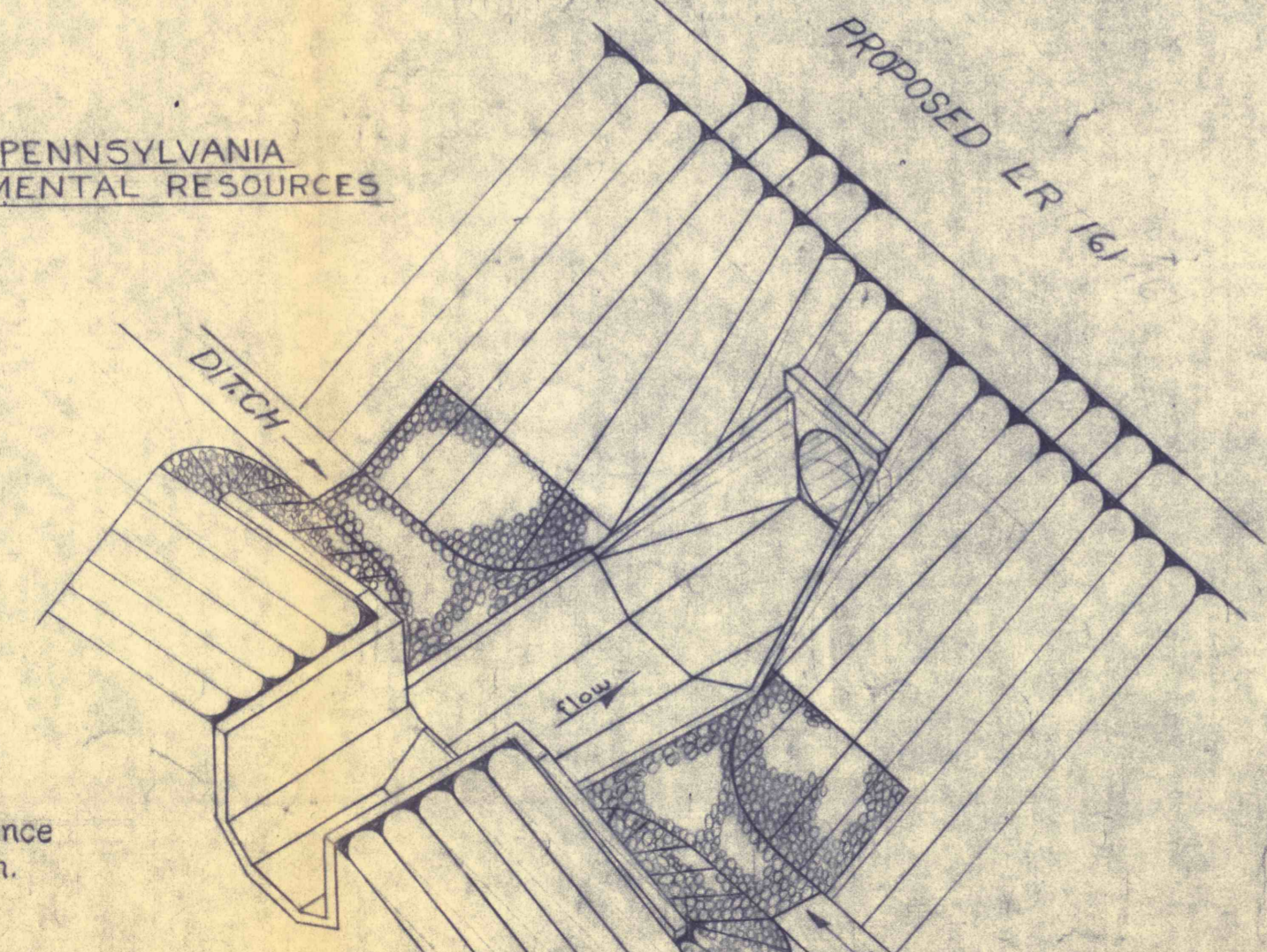
Designation	Type	User
G-1	High pressure gas	Mount Carmel Gas Company Manager A.J. Patrick 117 N. Oak St. Mt Carmel, Penna. 17851 Phone: 717-339-4290
G-2	Low pressure gas	Mt Carmel, Penna. 17851 Phone: 717-339-4290



PLAN  
 Scale: 1 in. = 30 ft.



PROFILE  
 Scale: Hor. 1 in. = 50 ft.  
 Vert. 1 in. = 10 ft.



PICTORIAL VIEW  
 STILLING BASIN AND  
 ENTRANCE TO 60" R.C.P.

APPROVED 9Apr.76 Add chain link fence

NO.	DATE	REVISION	APPR.

SUBMITTED: *R.R. Rao*  
 PROJECT CO-ORDINATOR

APPROVED: *Albert A. Ranieri*  
 CHIEF - DIVISION OF MINE RECLAMATION

APPROVED: *DePenne*  
 DIRECTOR - BUREAU OF DESIGN

COMMONWEALTH OF PENNSYLVANIA  
 DEPARTMENT OF ENVIRONMENTAL RESOURCES

COMMONWEALTH OF PENNSYLVANIA  
 DEPARTMENT OF ENVIRONMENTAL RESOURCES  
 OFFICE OF RESOURCES MANAGEMENT

CONTRACT NO. SL 113-3-1

MINE DRAINAGE POLLUTION ABATEMENT  
 MOUNT CARMEL  
 SHAMOKIN CREEK WATERSHED  
 NORTHUMBERLAND CO., PA.

PLAN AND PROFILE

DRAWN BY: *L.J.C.* DATE: 6-10-75 DRAWING NO.: 4 of 10  
 CHECKED BY: *E.C.K.* SCALE: As shown