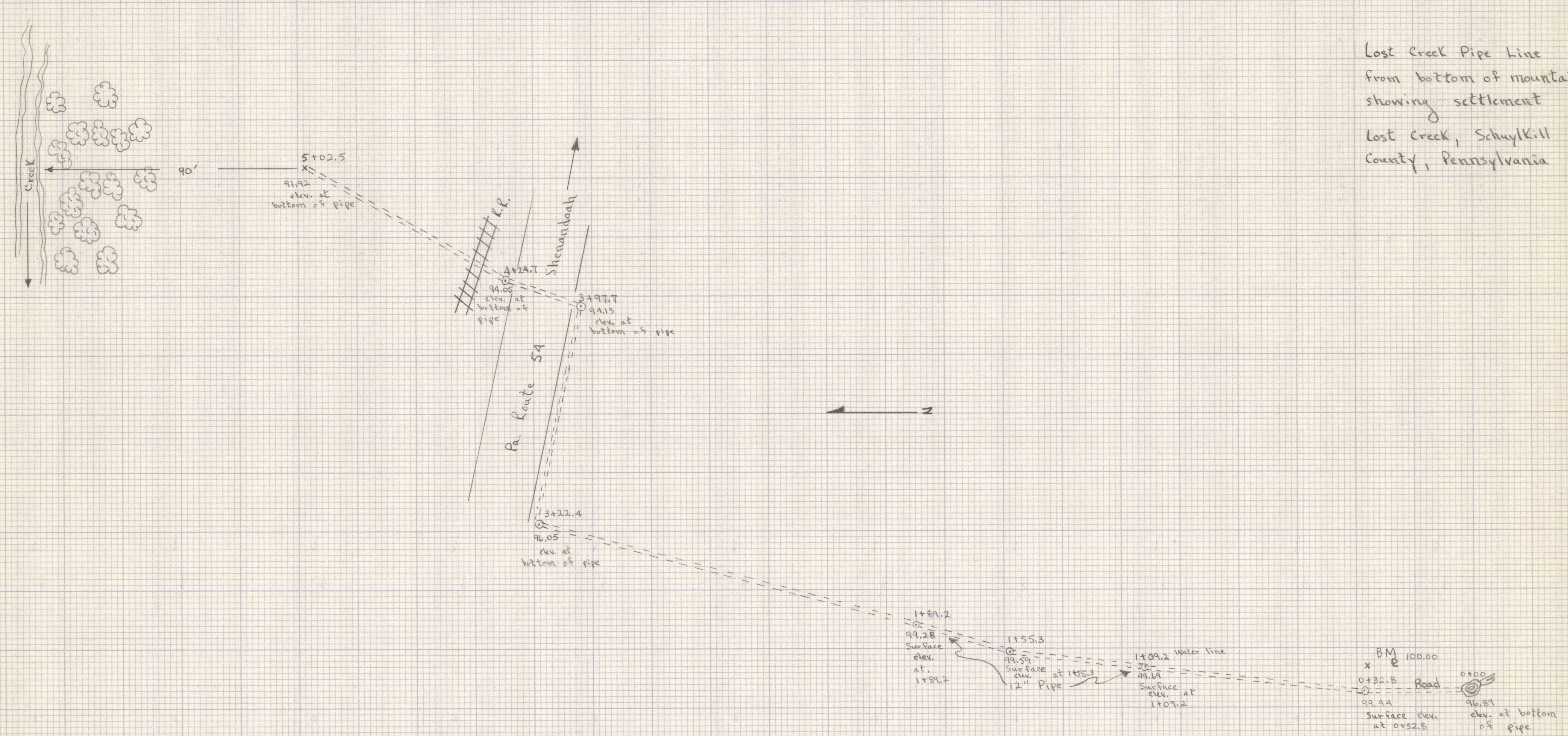


Scale 1" = 20' horz
 1" = 5' vert.
 Survey - S. Boyer
 Drawn - K. Laslow



Scale 1" = 20'
 Survey - S. Boyer
 Drawn - K. Laslow

Lost Creek Pipe Line
 from bottom of mountain
 showing settlement
 Lost Creek, Schuylkill
 County, Pennsylvania