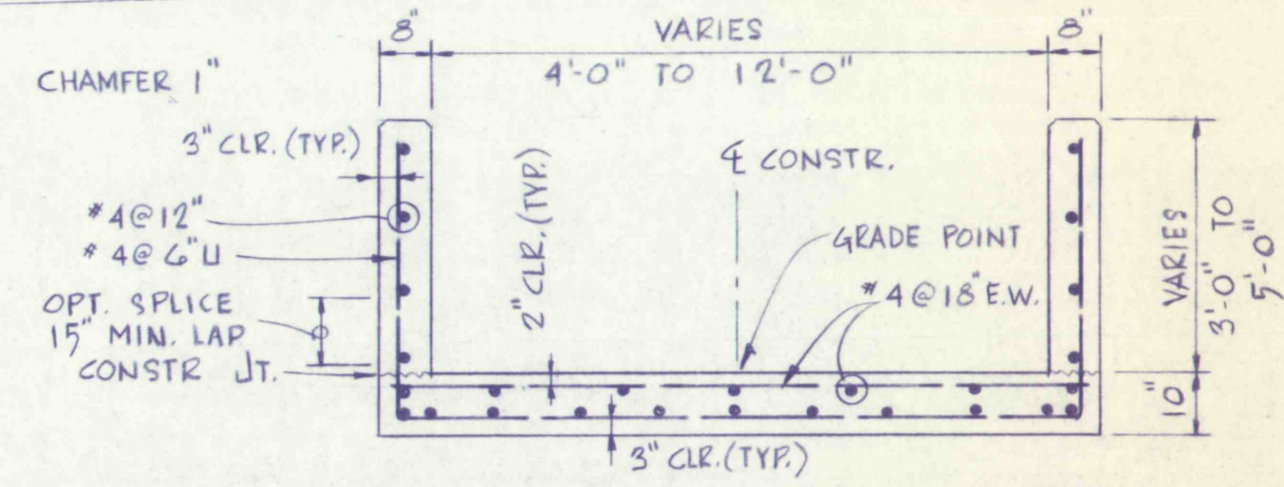


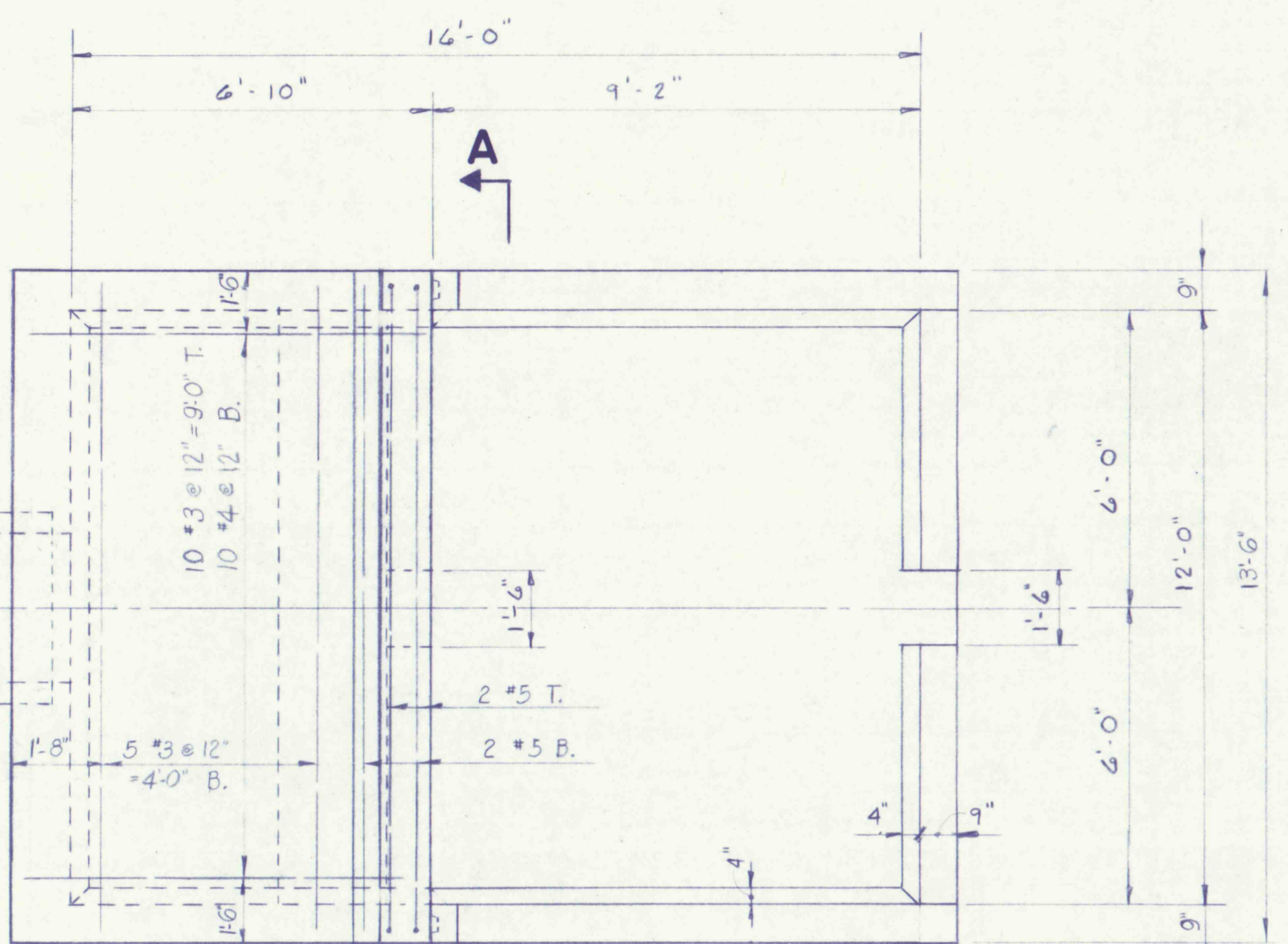
IMPACT BOX & CHANNEL TRANSITION
STA. 47+94.17 TO STA. 49+21.00

SCALE: 1" = 5'



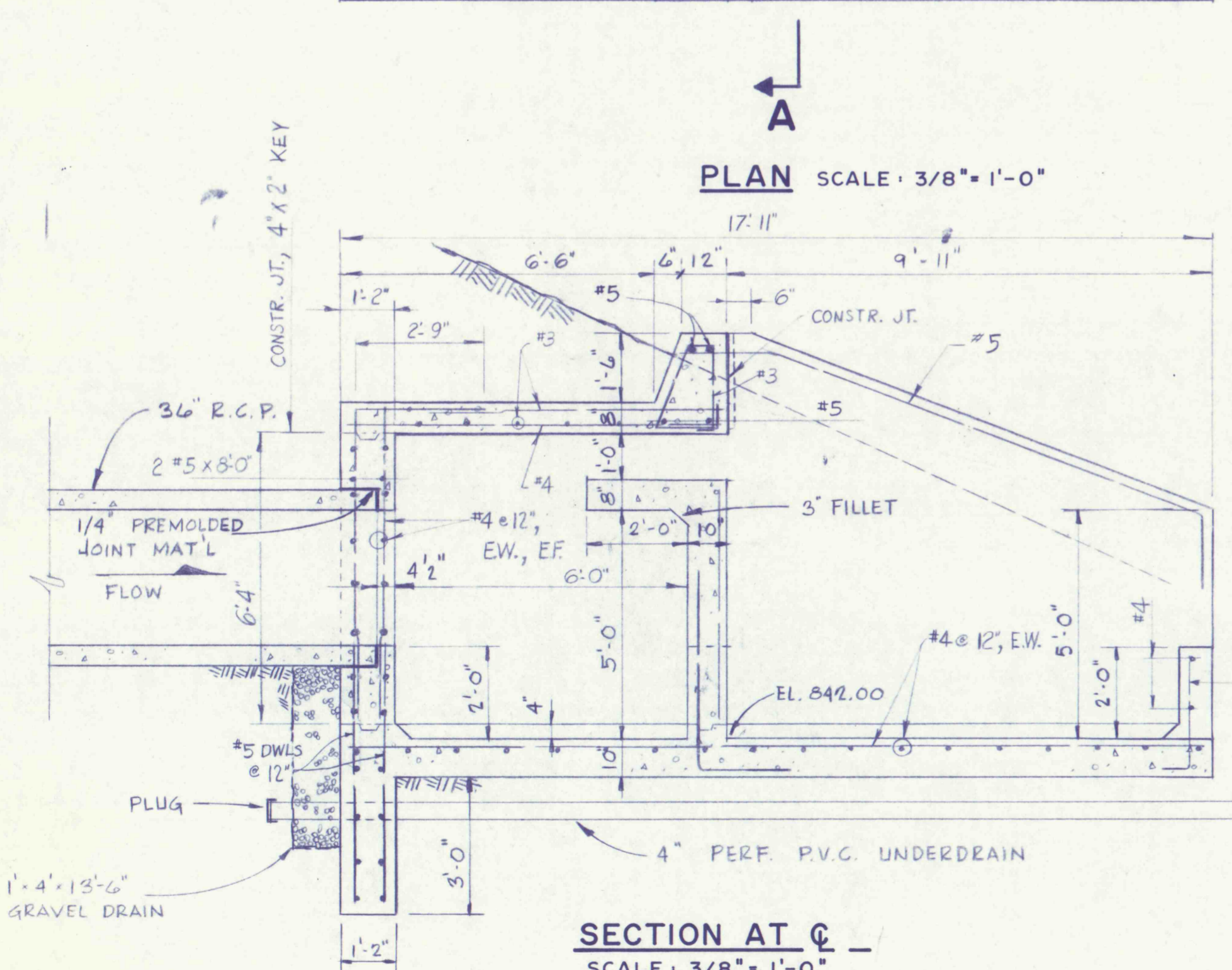
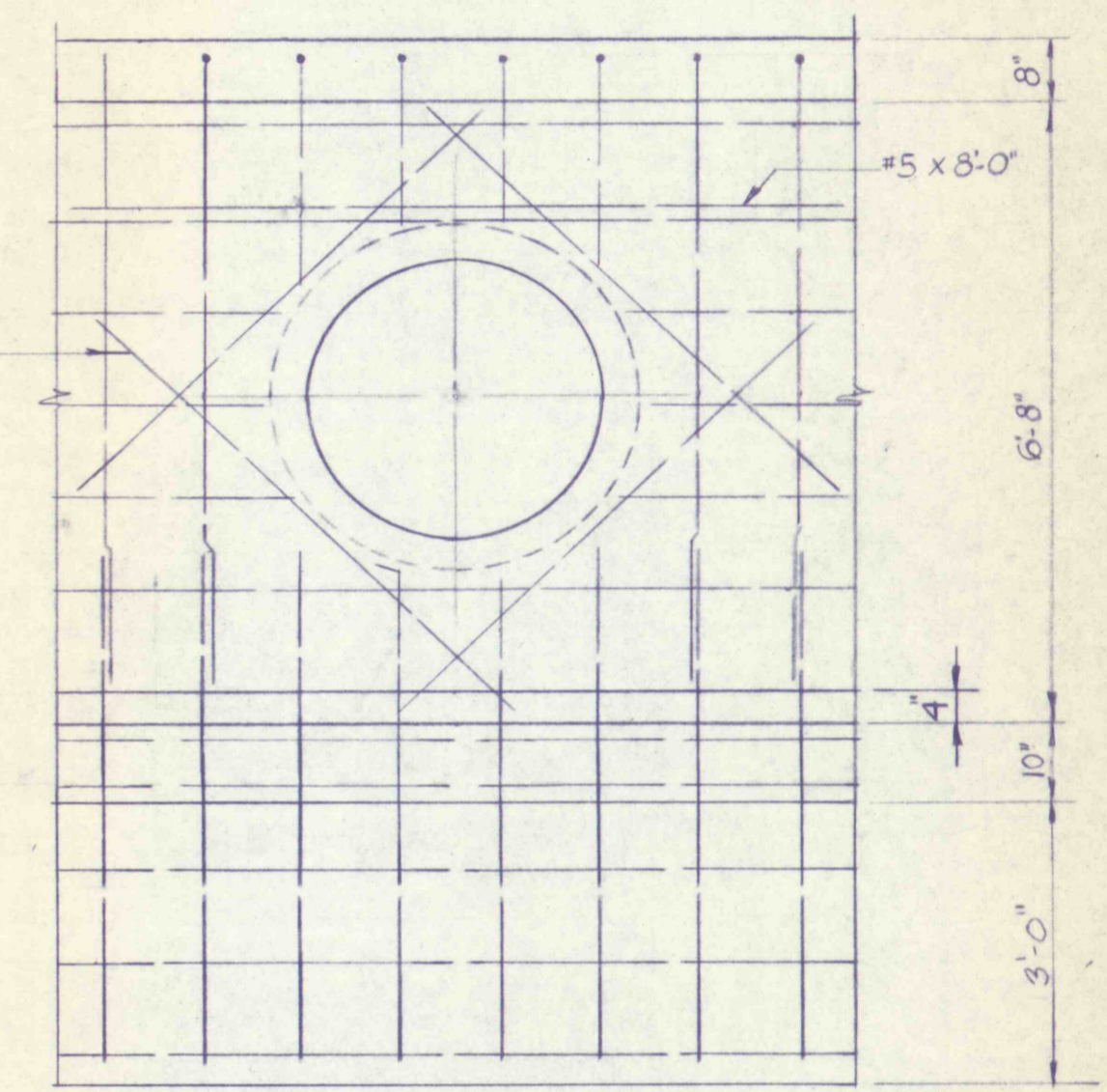
TYP. CHANNEL SECTION

SCALE: 3/8" = 1'-0"



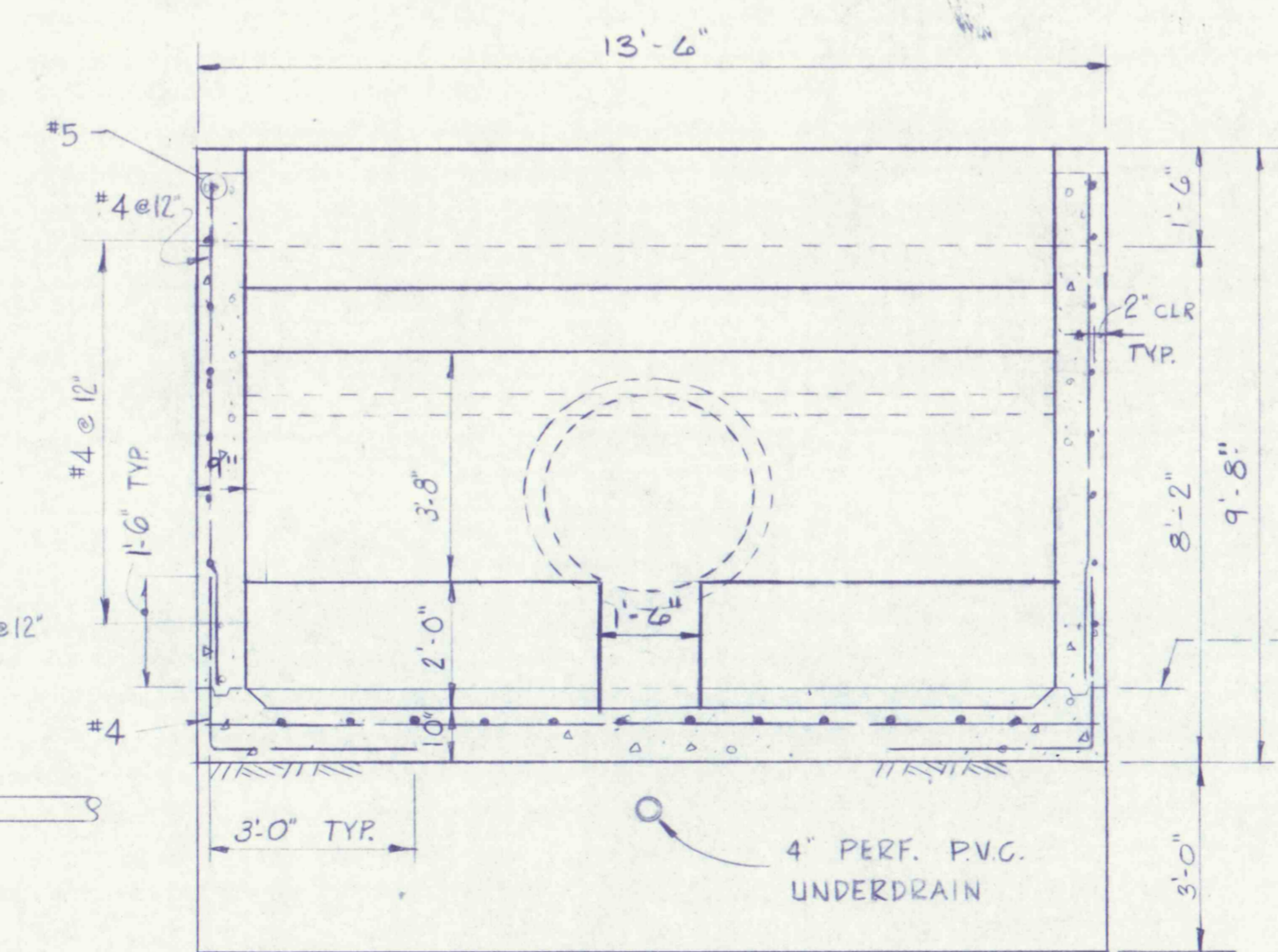
HALF PLAN SECTION

SCALE: 1/2" = 1'-0"



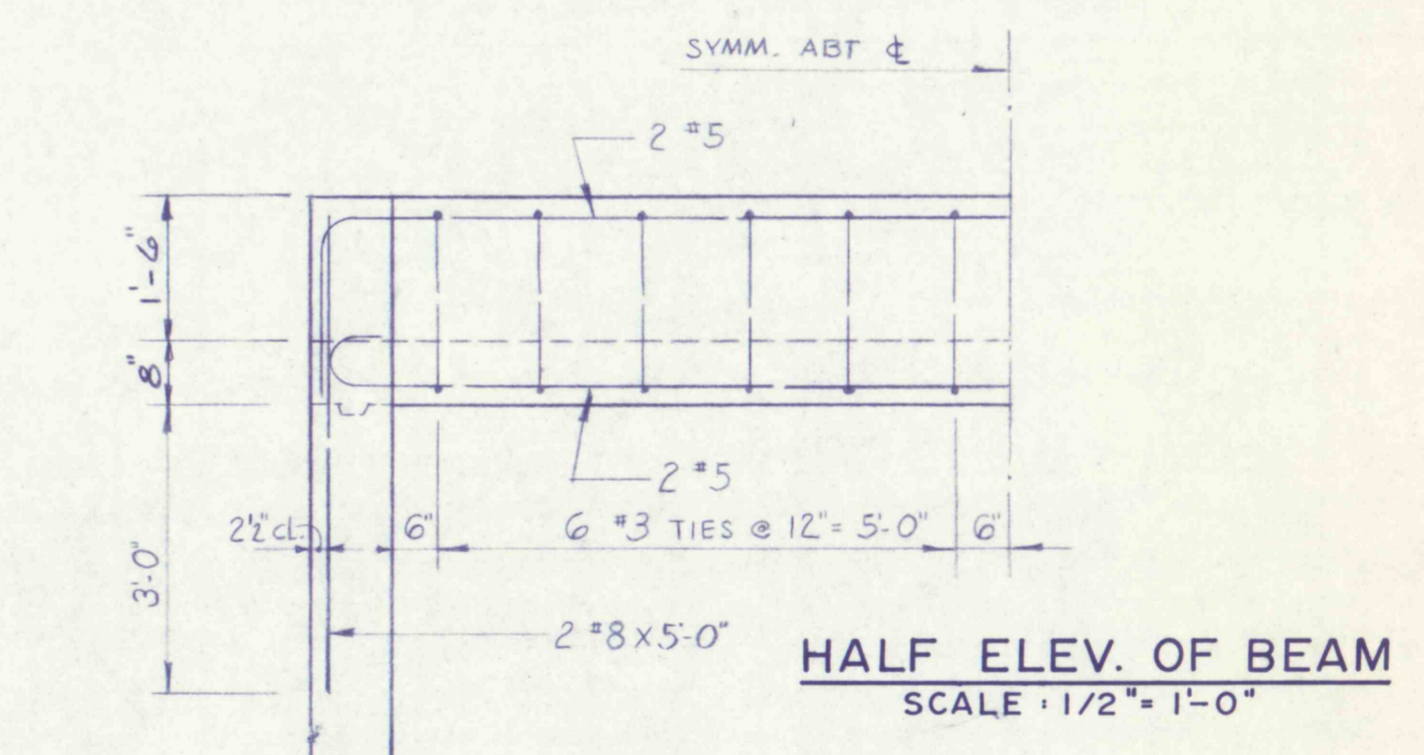
SECTION AT C-C

SCALE: 3/8" = 1'-0"



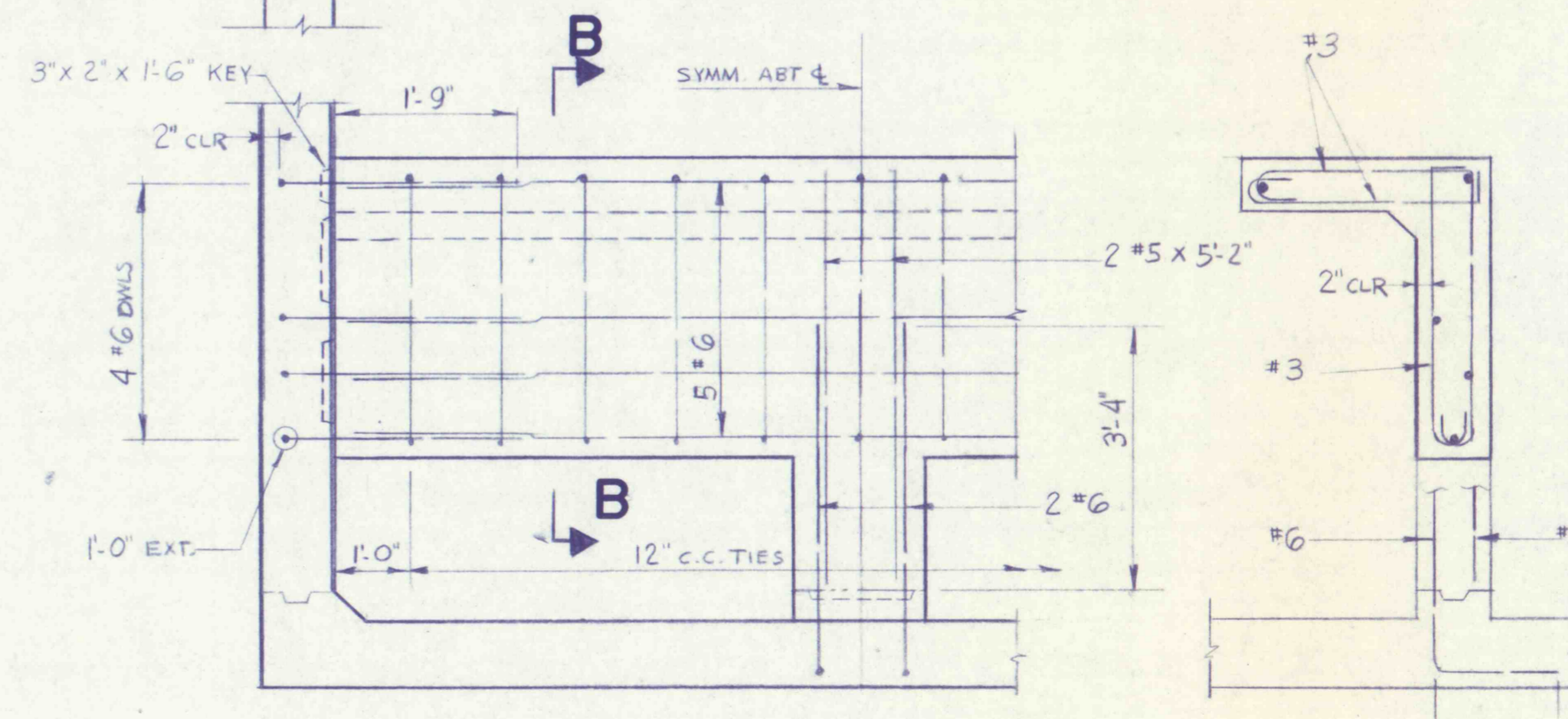
SECTION A-A

SCALE: 3/8" = 1'-0"



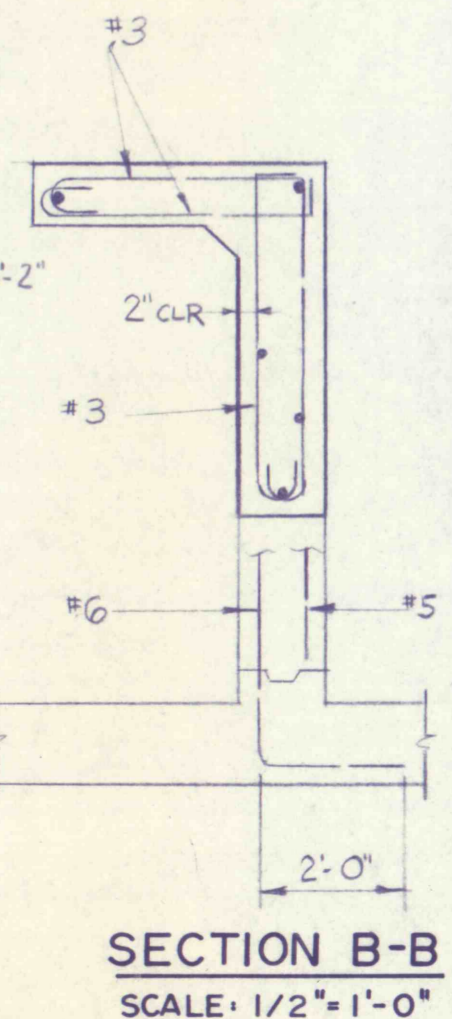
HALF ELEV. OF BEAM

SCALE: 1/2" = 1'-0"



PART ELEV. OF IMPACT WALL

SCALE: 1/2" = 1'-0"



SECTION B-B

SCALE: 1/2" = 1'-0"

IMPACT BOX DETAILS

NO.	DATE	REVISION	APPR.
SUBMITTED			
PROFESSIONAL			
APPROVED			
CHIEF - DIVISION OF MINE RECLAMATION			
APPROVED			
DIRECTOR - BUREAU OF DESIGN			
FINAL			
S.J.M. JUL 28 1977			
COMMONWEALTH OF PENNSYLVANIA DEPARTMENT OF ENVIRONMENTAL RESOURCES OFFICE OF RESOURCES MANAGEMENT			
CONTRACT NO. SL 181-3-101.1			
SUGAR NOTCH RUN AMD ABATEMENT PROJECT WARRIOR CREEK AND SOLOMON CREEK WATERSHEDS			
GEO - Technical Services CONSULTING ENGINEERS & GEOLOGISTS			
851 So. 19th St.		HARRISBURG, PENNA.	
IMPACT BOX & CHANNEL TRANSITION			
STA. 47+94.17 TO STA. 49+21			
DRAWN BY R.L.A.	DATE MAY 1977	DRAWING NO.	21 of 40
CHECKED BY S.J.M.	SCALE As Shown		