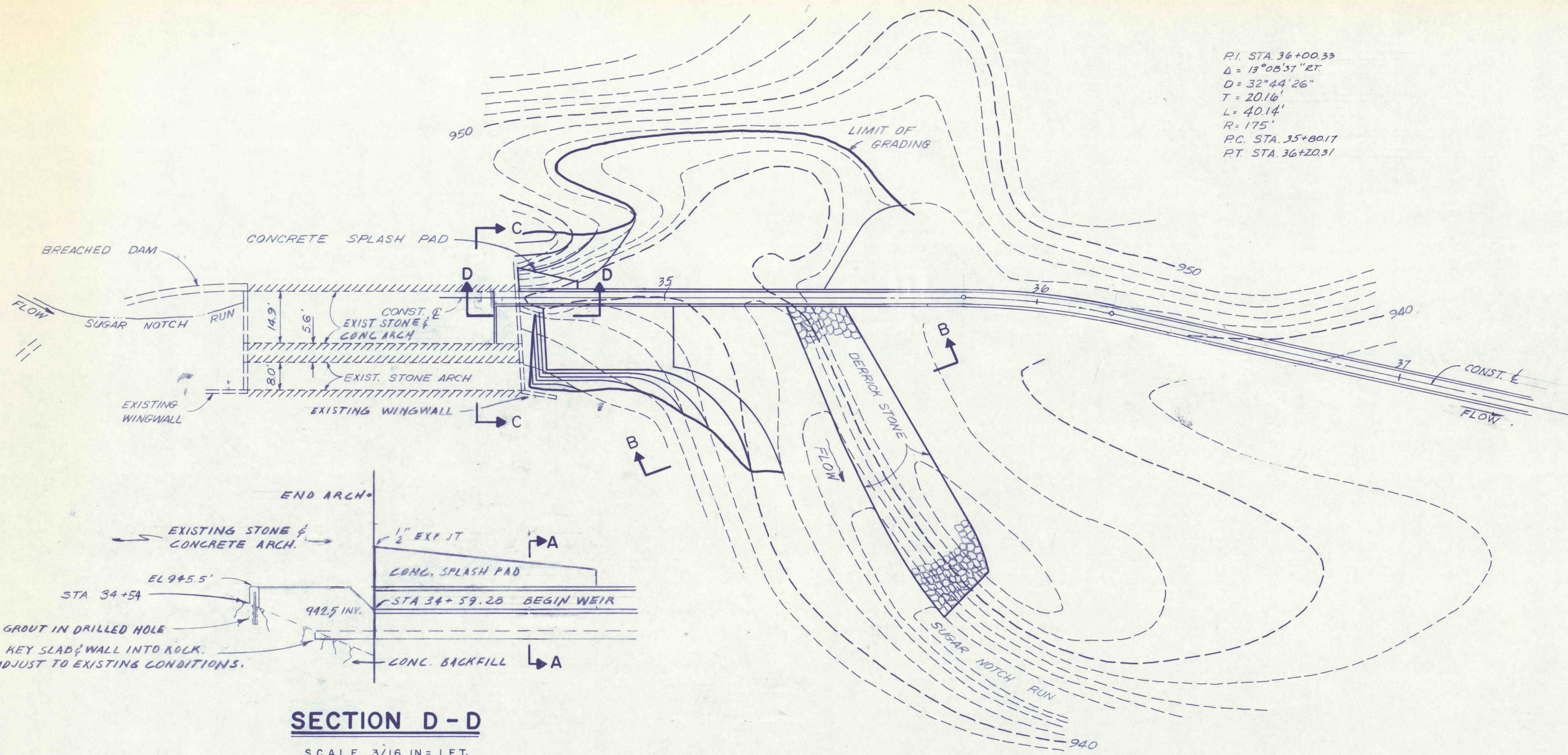
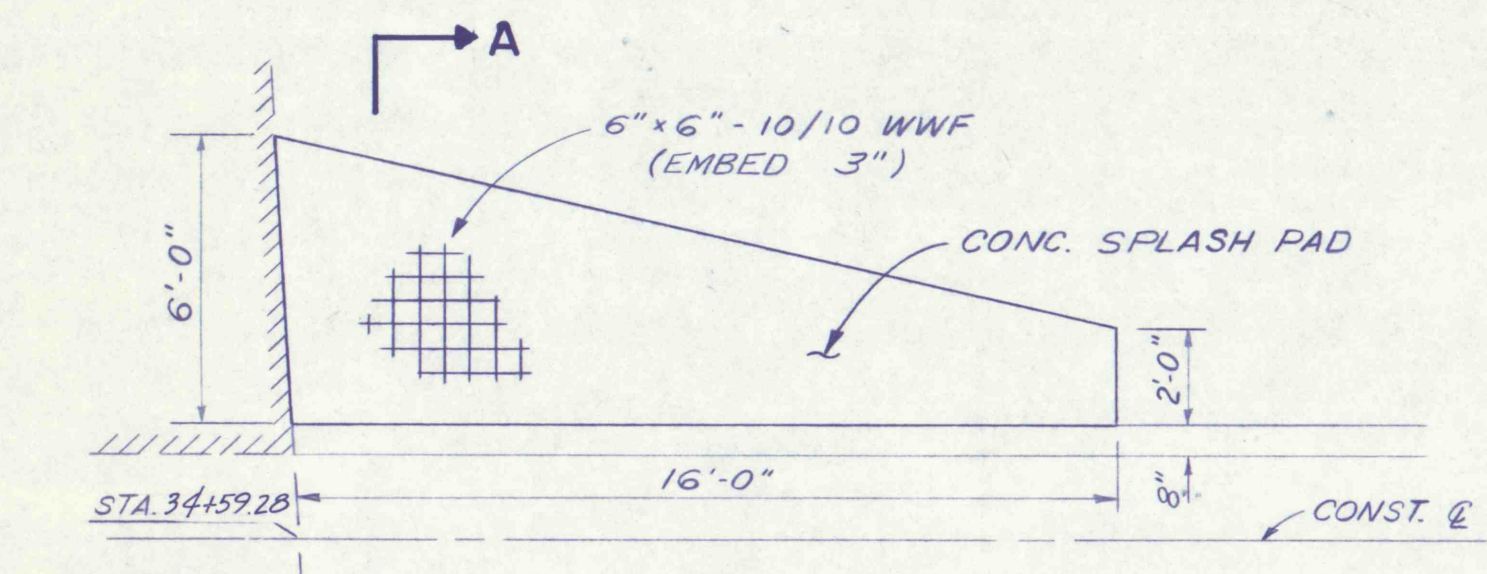
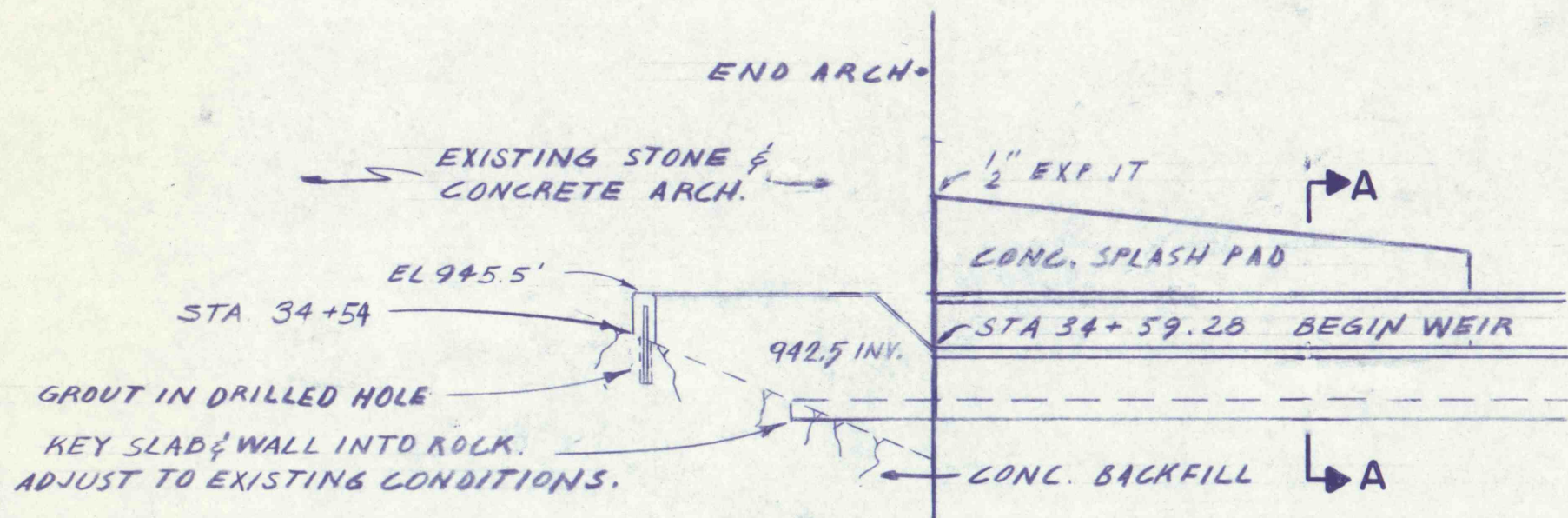


P.I. STA. 36+00.33
 Δ = 13°08'37" 2T.
 D = 32°44'26"
 T = 20.16'
 L = 40.14'
 R = 175'
 P.C. STA. 35+80.17
 P.T. STA. 36+20.31



SECTION D-D

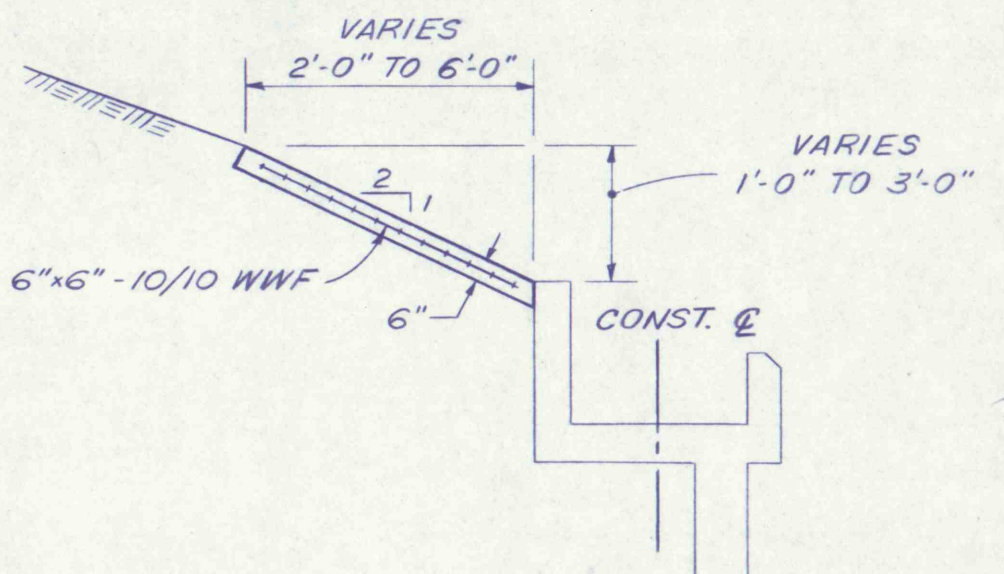
SCALE: 3/16 IN. = 1 FT.



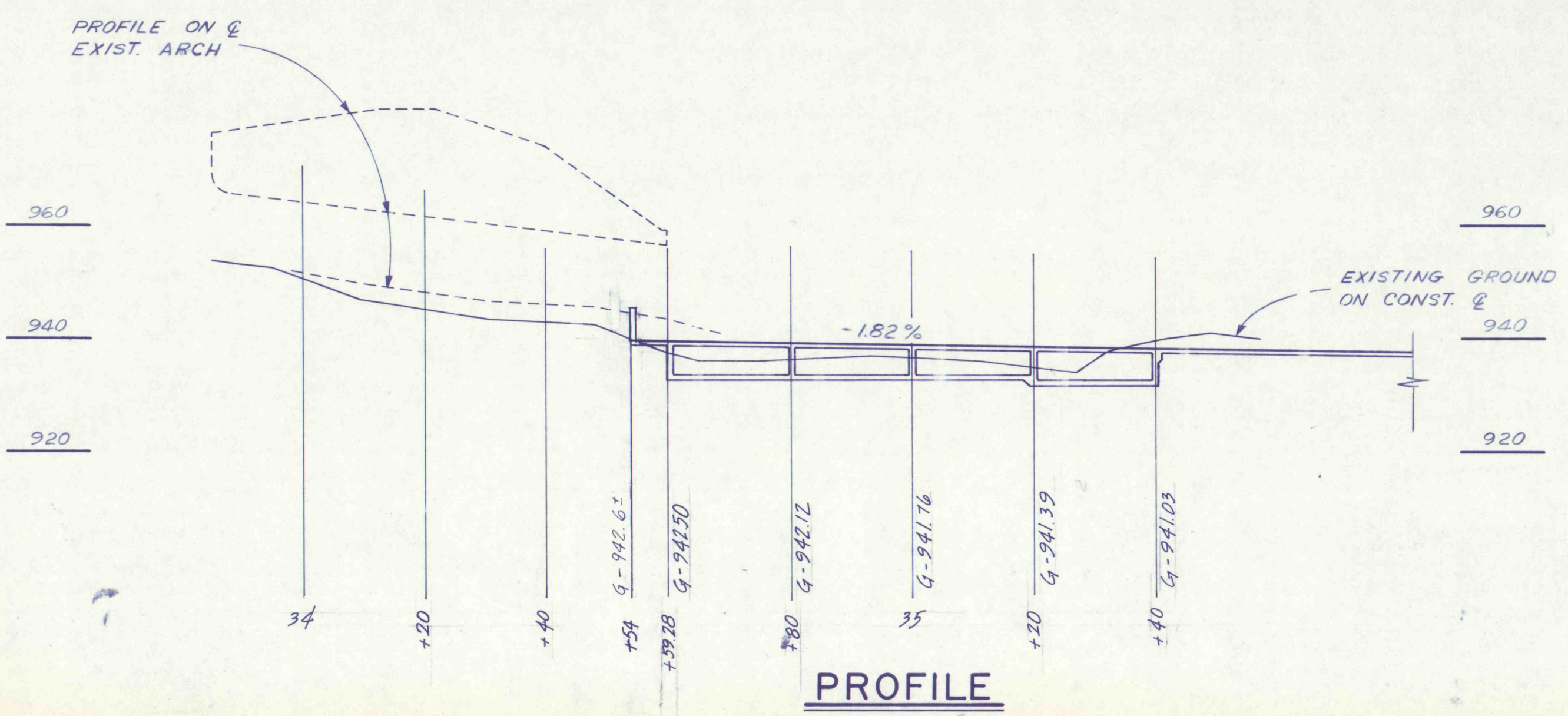
PLAN

SPLASH PAD

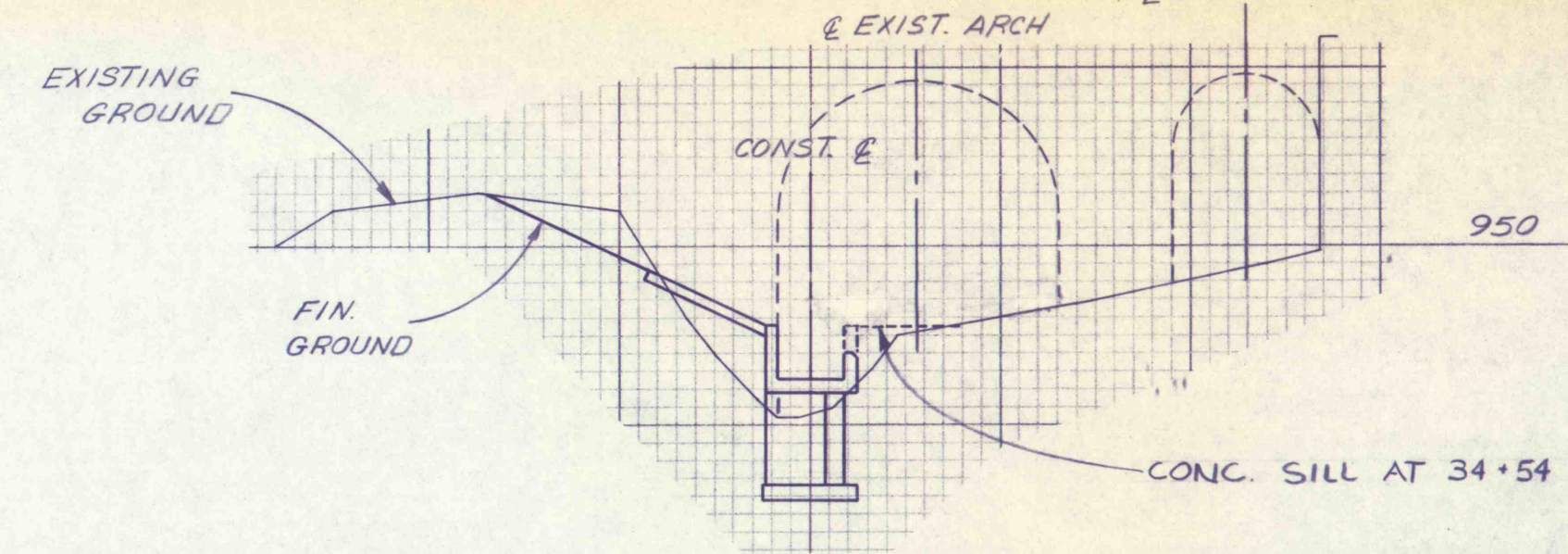
SCALE: 1/4 IN. = 1 FT.



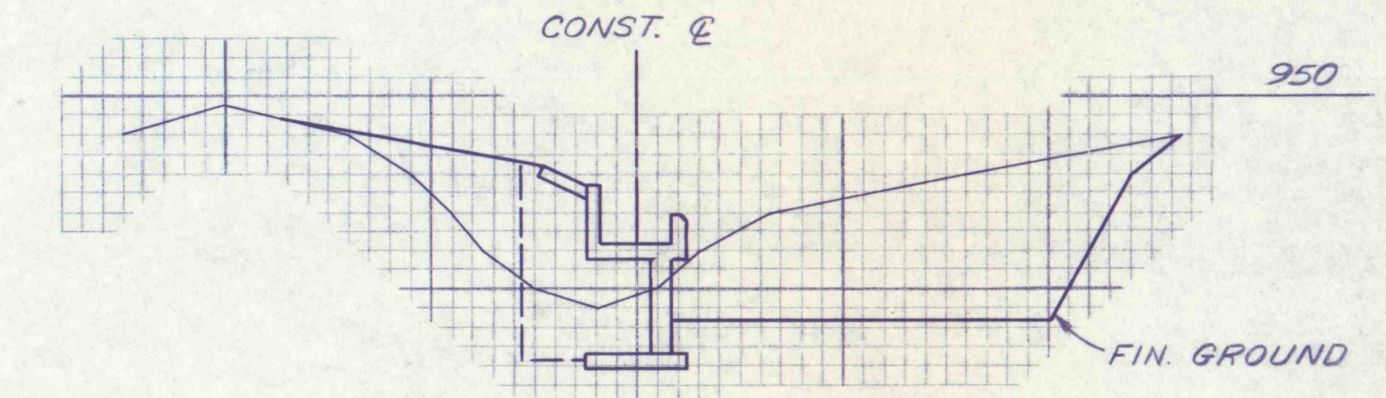
SECTION A-A



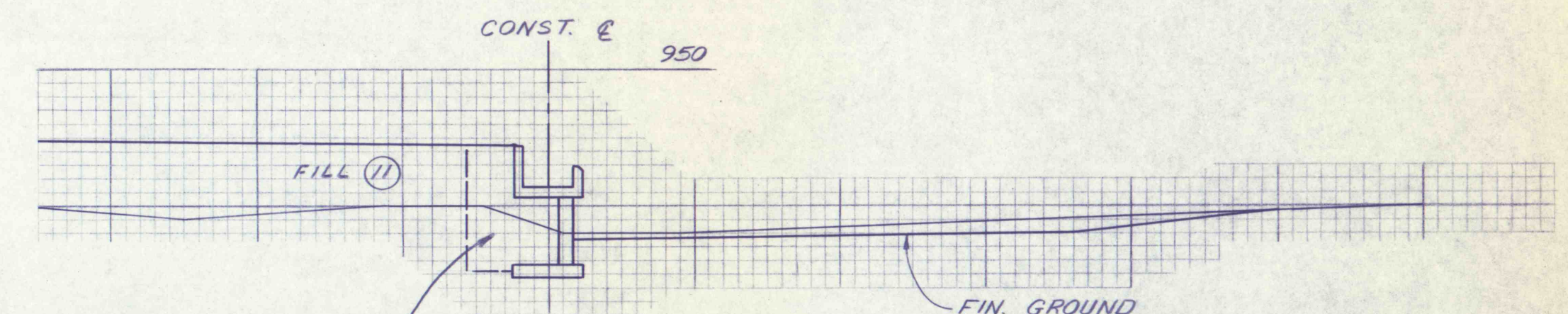
PROFILE



STA. 34+59.28



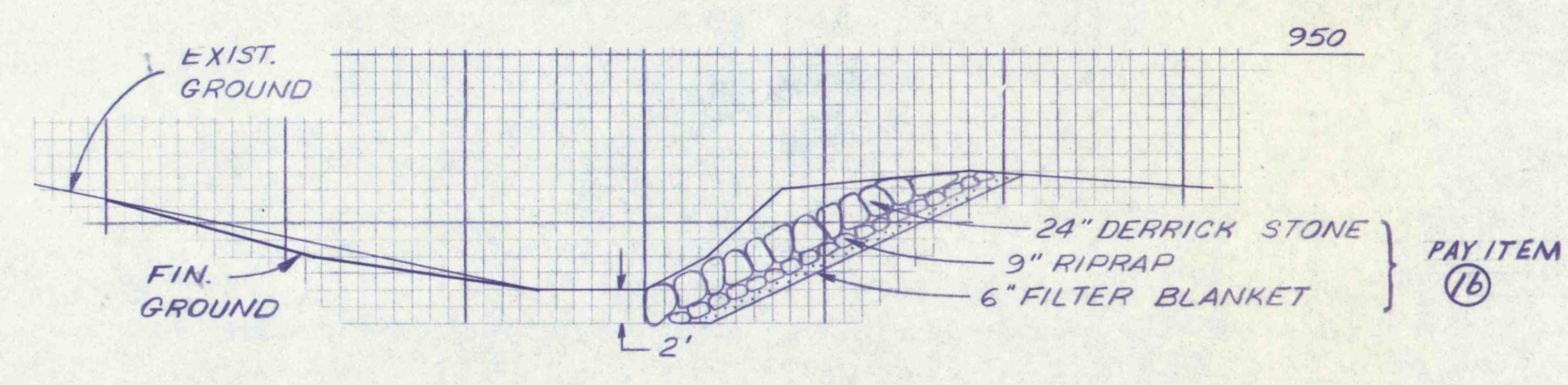
STA. 34+75.28



STA. 35+25

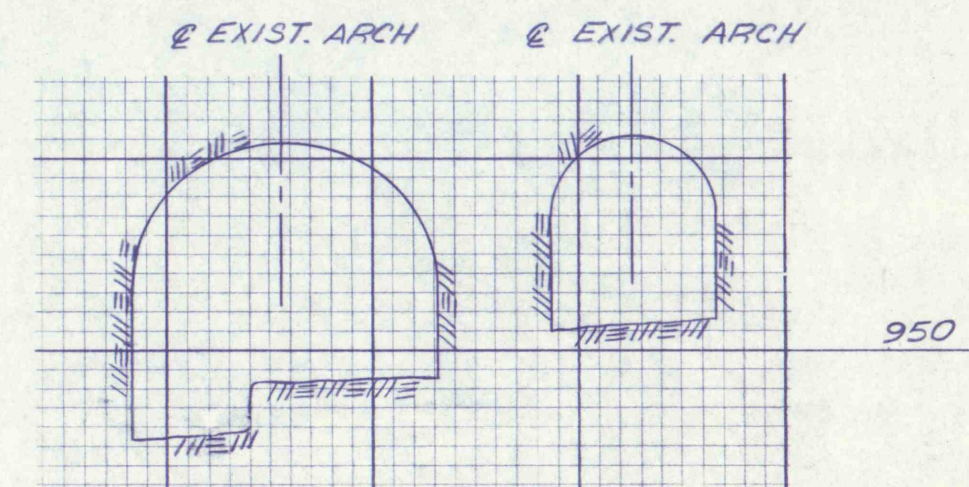
SECTIONS

SCALE: 1 IN. = 10 FT.



SECTION B-B

SCALE: 1 IN. = 10 FT.



SECTION C-C

SCALE: 1 IN. = 10 FT.

NO. DATE REVISION APPR.			
SUBMITTED			
PROFESSIONAL			
APPROVED			
CHIEF - DIVISION OF MINE RECLAMATION			
APPROVED			
DIRECTOR - BUREAU OF DESIGN			
FINAL		GEO - Technical Services	
SJM 1111 08 1977		CONSULTING ENGINEERS & GEOLOGISTS	
		HARRISBURG, PENNA.	
COMMONWEALTH OF PENNSYLVANIA			
DEPARTMENT OF ENVIRONMENTAL RESOURCES			
OFFICE OF RESOURCES MANAGEMENT			
CONTRACT NO. SL 181-3-101.1			
SUGAR NOTCH RUN AMD			
ABATEMENT PROJECT			
WARRIOR CREEK AND			
SOLOMON CREEK WATERSHEDS			
LUZERNE COUNTY, PENNA.			
DIVERSION STRUCTURE			
SHEET 1 OF 2			
DRAWN BY	DATE	DRAWING NO.	
WEH	MAY 1977	16 of 40	
CHECKED BY	SCALE		
SJM	As Shown		