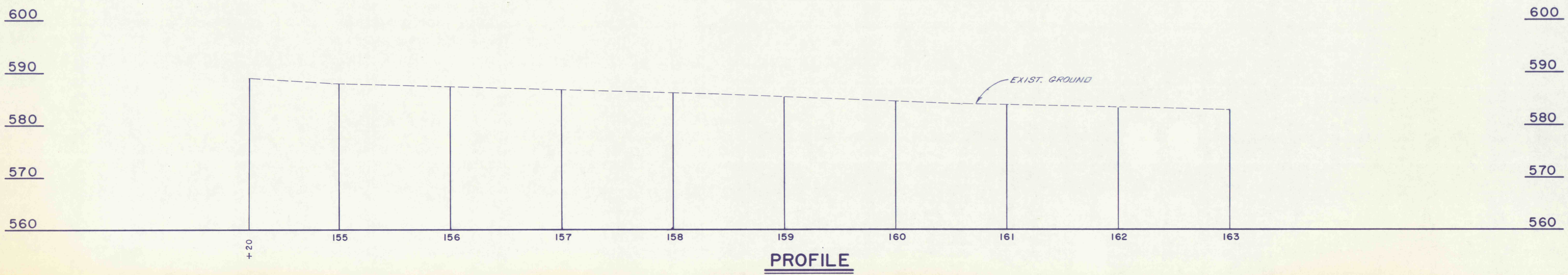


SURVEY # "A-13"
 P.I. STA. 87+74.58
 $\pm = 91^{\circ}26'43"$
 CHISELED CROSS ON MANHOLE RIM
 N 386,274.87
 E 2,495,931.23
 ELEV. 601.55

ALL HANOVER SCHOOL DIST

PLAN
 SCALE: 1 IN. = 50 FT.



PROFILE

NO.	DATE	REVISION	APPR.
SUBMITTED			
PROFESSIONAL			
APPROVED			
CHIEF - DIVISION OF MINE RECLAMATION			
APPROVED			
DIRECTOR - BUREAU OF DESIGN			
FINAL			
S.J.M. JUL 28 1977			
COMMONWEALTH OF PENNSYLVANIA DEPARTMENT OF ENVIRONMENTAL RESOURCES OFFICE OF RESOURCES MANAGEMENT			
CONTRACT NO. SL 181-3-101.1			
SUGAR NOTCH RUN AMD ABATEMENT PROJECT WARRIOR CREEK AND SOLOMON CREEK WATERSHEDS			
GEO - Technical Services CONSULTING ENGINEERS & GEOLOGISTS			
851 So. 19th St.		HARRISBURG, PENNA.	
PLAN & PROFILE STA. 154+20 TO STA. 163+00			