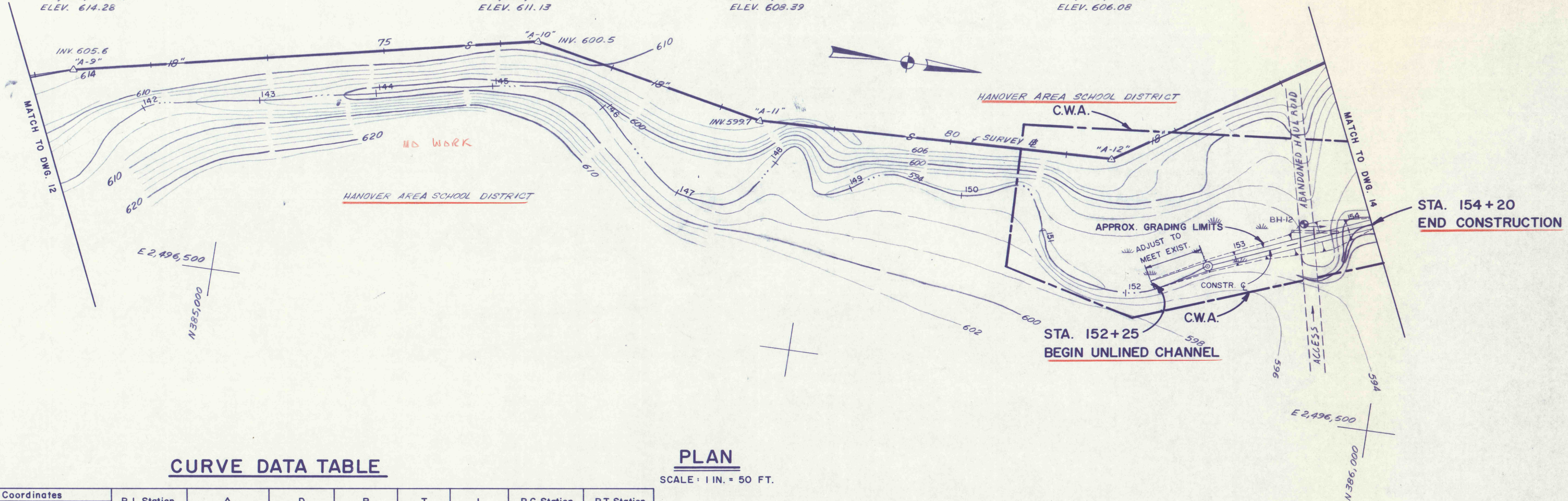


SURVEY # "A-9"  
 P.I. STA. 72+33.35  
 Δ = 185°30'54"  
 CHISELED CROSS ON MANHOLE RIM  
 N 384,855.86  
 E 2,496,336.67  
 ELEV. 614.28

SURVEY # "A-10"  
 P.I. STA. 76+32.01  
 Δ = 204°33'40"  
 CHISELED CROSS ON MANHOLE RIM  
 N 385,245.54  
 E 2,496,252.56  
 ELEV. 611.13

SURVEY # "A-11"  
 P.I. STA. 78+35.33  
 Δ = 165°44'11"  
 CHISELED CROSS ON MANHOLE RIM  
 N 385,444.14  
 E 2,496,296.16  
 ELEV. 608.39

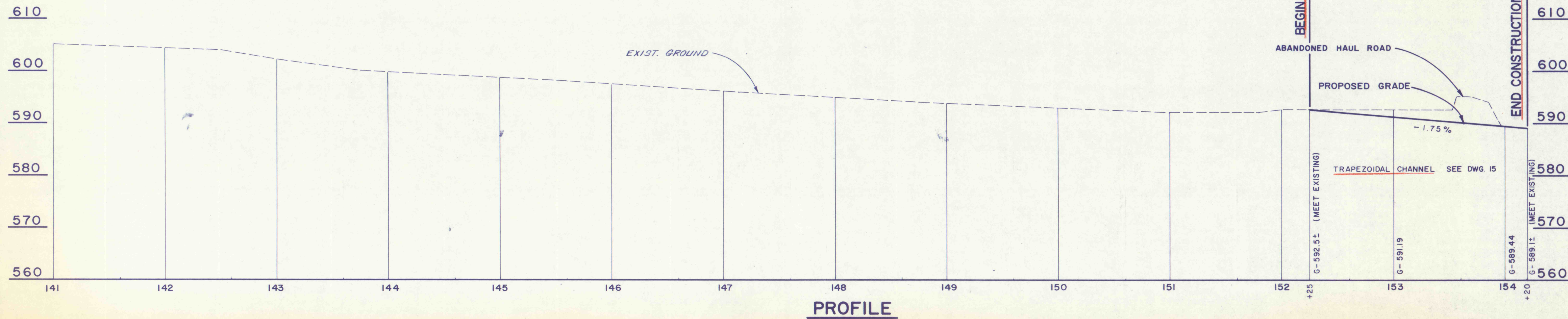
SURVEY # "A-12"  
 P.I. STA. 81+39.00  
 Δ = 147°55'57"  
 CHISELED CROSS ON MANHOLE RIM  
 N 385,747.64  
 E 2,496,286.18  
 ELEV. 606.08



**CURVE DATA TABLE**

Curve No.	P. I. Coordinates		P. I. Station	Δ	D	R	T	L	P.C. Station	P.T. Station
	North	East								
—	385,843.05	2,496,371.18	152+75.00	BEGIN CONTROLLED CHANNEL ALIGNMENT						
—	385,975.87	2,496,312.99	154+20.00	END CONTROLLED CHANNEL ALIGNMENT						

**PLAN**  
 SCALE: 1 IN. = 50 FT.



**PROFILE**

FOR CROSS SECTIONS SEE DWG. 40

NO.	DATE	REVISION	APPR.
SUBMITTED			
PROFESSIONAL			
APPROVED			
CHIEF - DIVISION OF MINE RECLAMATION			
APPROVED			
DIRECTOR - BUREAU OF DESIGN			
<b>FINAL</b>			
S.J.M. JUL 20 1977			
COMMONWEALTH OF PENNSYLVANIA DEPARTMENT OF ENVIRONMENTAL RESOURCES OFFICE OF RESOURCES MANAGEMENT			
CONTRACT NO. SL 181-3-101.1			
SUGAR NOTCH RUN AMD ABATEMENT PROJECT WARRIOR CREEK AND SOLOMON CREEK WATERSHEDS			
GEO - Technical Services CONSULTING ENGINEERS & GEOLOGISTS 851 So. 19th St. HARRISBURG, PENNA.			
<b>PLAN &amp; PROFILE</b> STA. 141+00 TO STA. 154+20			
DRAWN BY WEH	DATE MAY 1977	DRAWING NO. 13 of 40	
CHECKED BY SJM	SCALE As Shown		