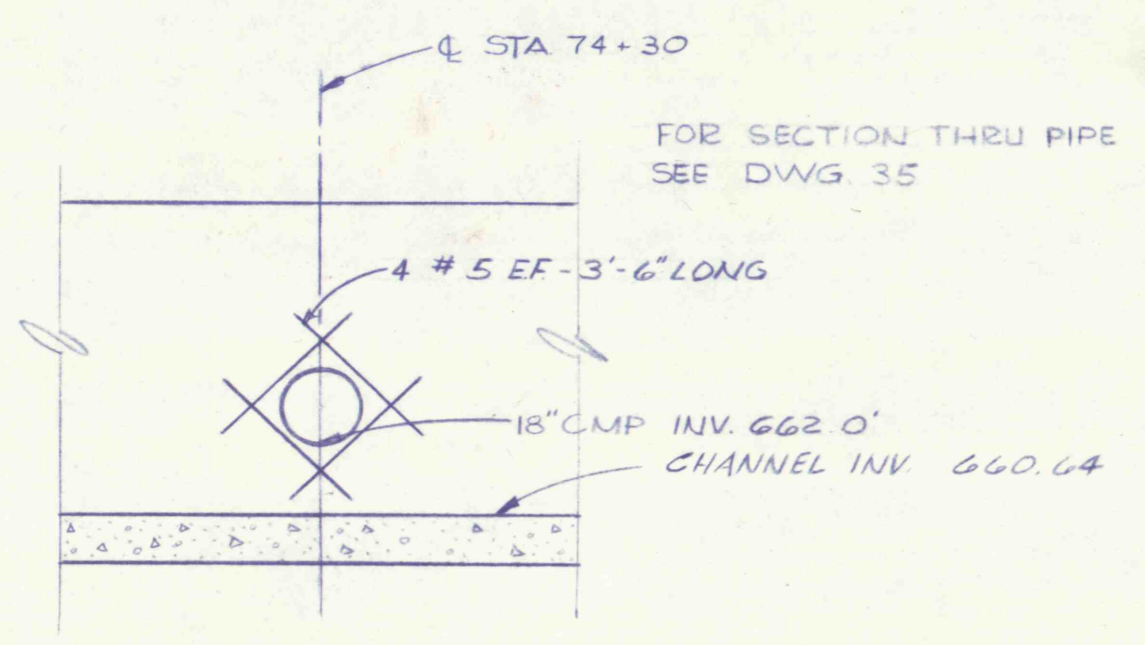


STA. 70+90 TO STA. 71+00
TRANSITION FROM 10' WIDE CONC.
CHANNEL TO 12' WIDE CONC. CHANNEL.

EXIST. CONC. BOX CULVERT
12'-0" WIDE
6'-6" HIGH
INV. 660.3 (IN)
INV. 659.9 (OUT)

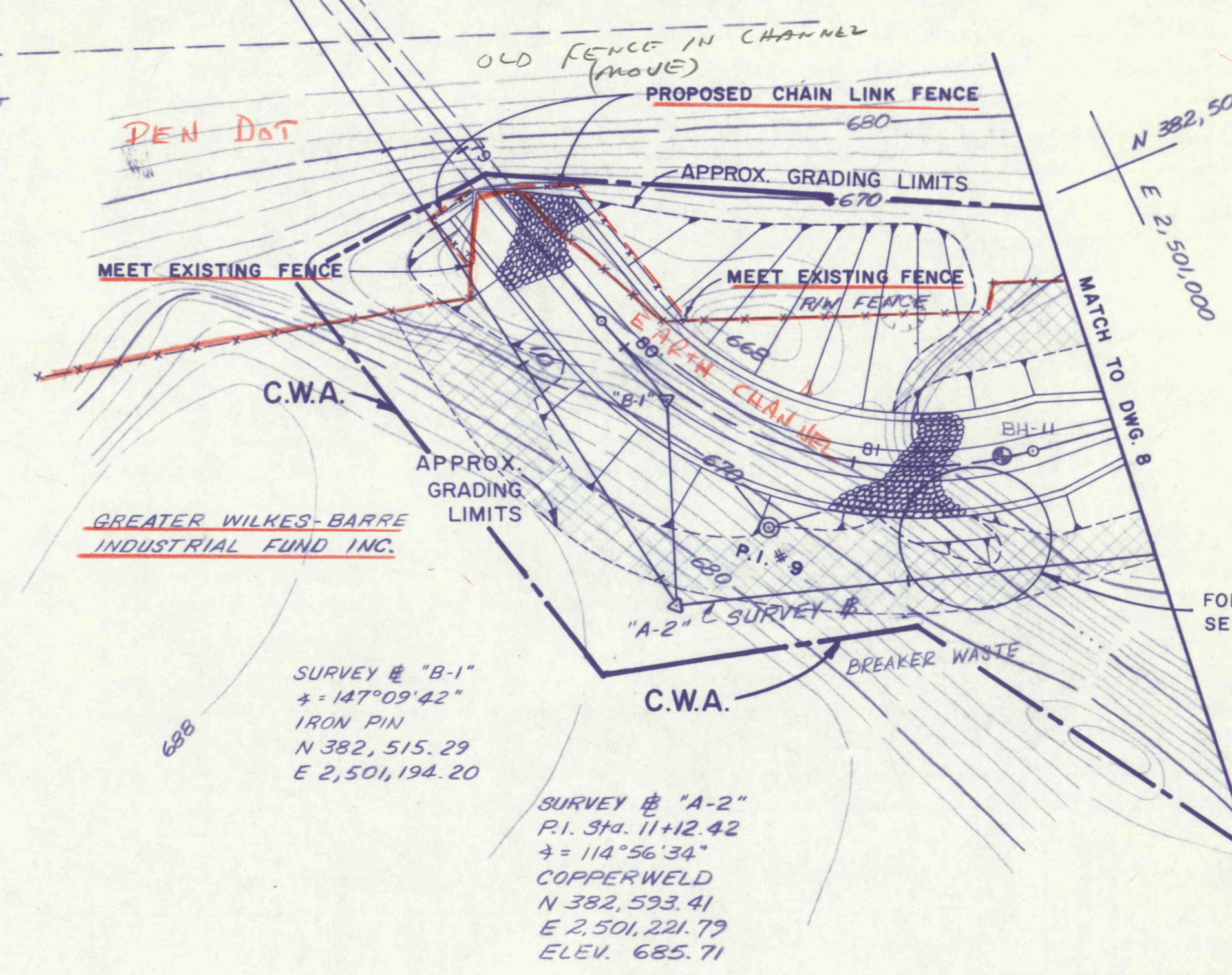
CURVE DATA TABLE

Curve No.	P.I. Coordinates		P.I. Station	Δ	D	R	T	L	P.C. Station	P.T. Station
	North	East								
8	382,041.03	2,501,307.07	75+56.71	58°57'29" RT.	28°38'52"	200.00'	113.06'	205.80'	74+43.65	76+49.45
9	382,579.02	2,501,179.03	80+89.41	69°25'20" LT.	38°11'50"	150.00'	103.91'	181.75'	79+85.50	81+67.25



PLAN

SCALE: 1 IN. = 50 FT.

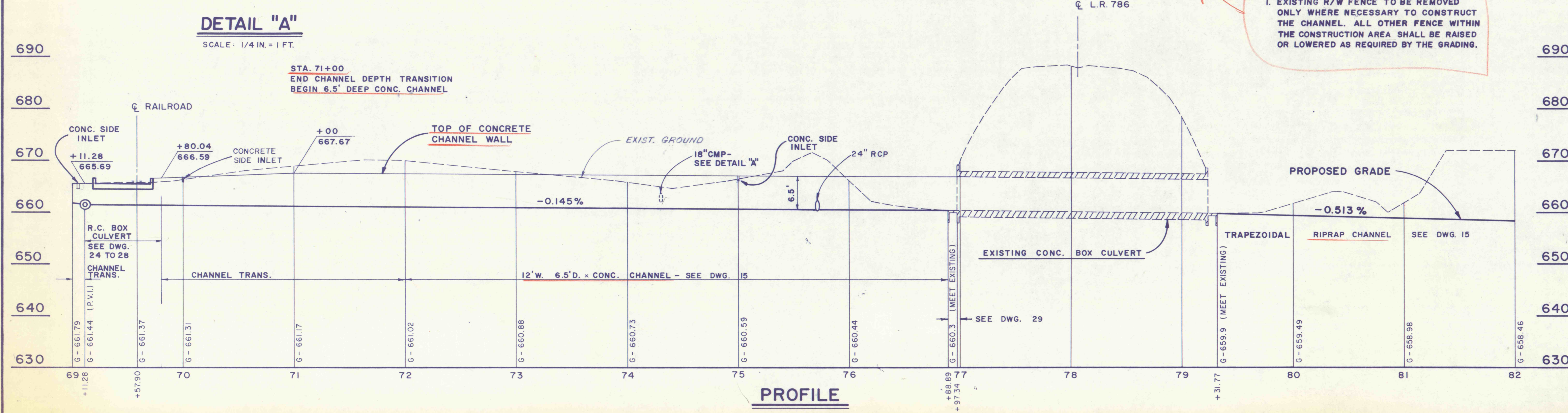


CONCRETE SIDE INLET

SCALE: 3/8 IN. = 1 FT.

STA. 81+75
END 12' WIDE, 6' DEEP CHANNEL
BEGIN TRANSITION TO NORMAL CHANNEL (EARTH)

NOTES:
1. EXISTING R/W FENCE TO BE REMOVED ONLY WHERE NECESSARY TO CONSTRUCT THE CHANNEL. ALL OTHER FENCE WITHIN THE CONSTRUCTION AREA SHALL BE RAISED OR LOWERED AS REQUIRED BY THE GRADING.



NO.	DATE	REVISION	APPR.
SUBMITTED			
PROFESSIONAL			
APPROVED			
CHIEF - DIVISION OF MINE RECLAMATION			
APPROVED			
DIRECTOR - BUREAU OF DESIGN			
<p>FINAL</p> <p>S.J.M. JUL 28 1977</p>			
<p>COMMONWEALTH OF PENNSYLVANIA DEPARTMENT OF ENVIRONMENTAL RESOURCES OFFICE OF RESOURCES MANAGEMENT</p>			
<p>CONTRACT NO. SL 181-3-101.1 SUGAR NOTCH RUN AMD ABATEMENT PROJECT WARRIOR CREEK AND SOLOMON CREEK WATERSHEDS</p>			
<p>GEO - Technical Services CONSULTING ENGINEERS & GEOLOGISTS 851 So. 19th St. HARRISBURG, PENNA.</p>			
<p>PLAN & PROFILE STA. 69+00 TO STA. 82+00</p>			
DRAWN BY WEH	DATE SEPT. 1976	DRAWING NO. 7 of 40	
CHECKED BY SJM	SCALE As Shown		