

PLAN
SCALE: 1 IN. = 50 FT.

STA. 68+85 TO STA. 68+95
TRANSITION FROM 8' WIDE CONC.
CHANNEL TO 10' WIDE CONC. CHANNEL

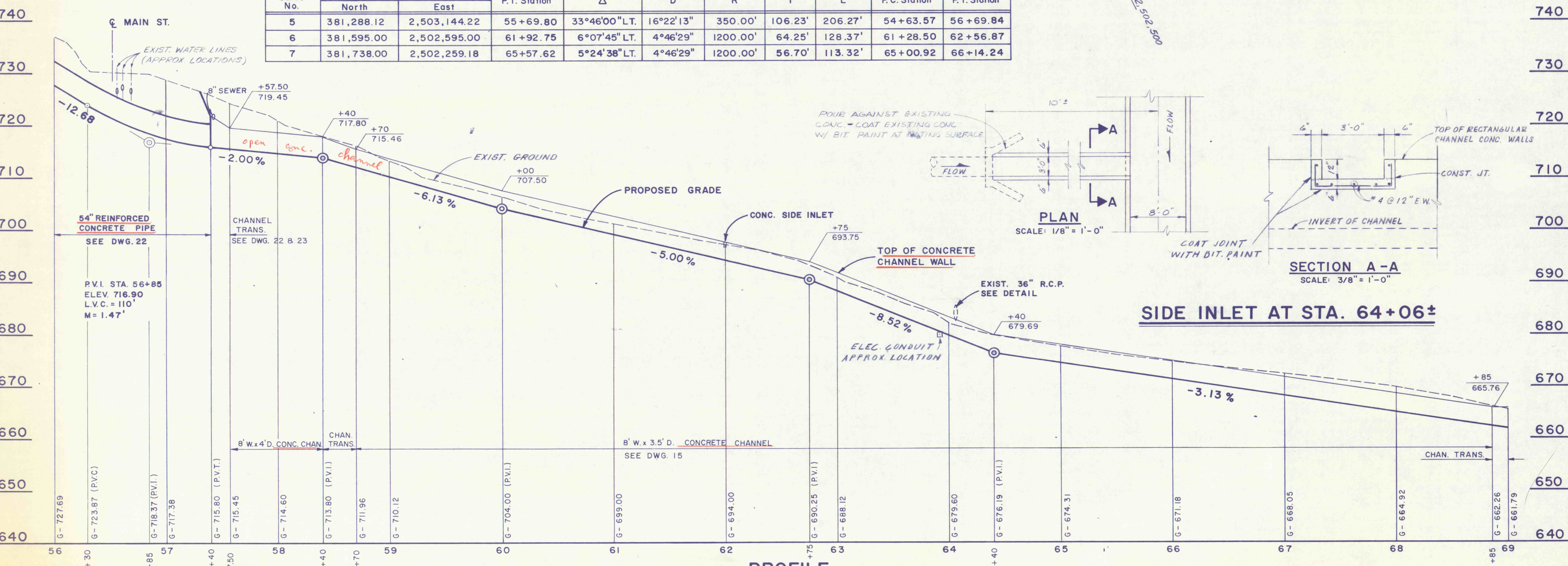
STA. 67+10± TO STA. 68+10±
REMOVE EXISTING R/W FENCE
STA. 67+10±
BEGIN NEW FENCE AT 8.0' LT. OF
CONSTR. C, CROSS CHANNEL AT
PARAPET OF BOX CULVERT AND
CONNECT TO EXISTING FENCE AT
20'± RT. OF STA. 69+00±.

STA. 68+10 TO STA. 69+00
RAISE OR LOWER EXISTING FENCE AS
REQUIRED BY GRADING.

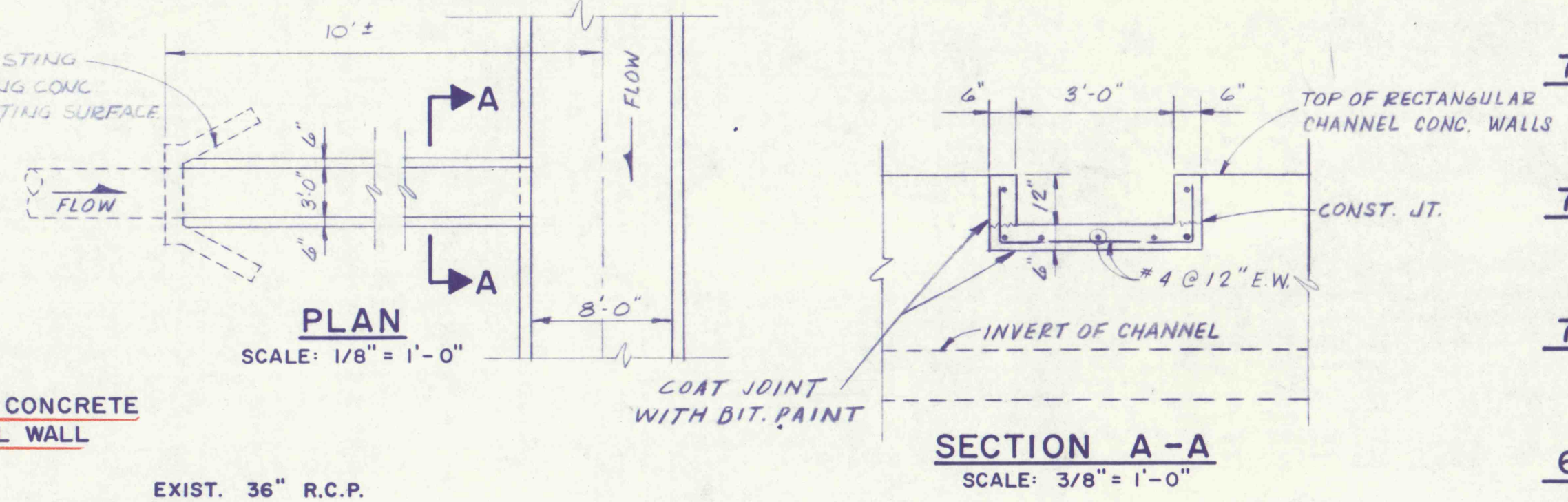
*Should this be on job doc?
Relocated fence
to be on Blue Coal property*

CURVE DATA TABLE

Curve No.	P.I. Coordinates		P.I. Station	Δ	D	R	T	L	P.C. Station	P.T. Station
	North	East								
5	381,288.12	2,503,144.22	55+69.80	33°46'00" LT.	16°22'13"	350.00'	106.23'	206.27'	54+63.57	56+69.84
6	381,595.00	2,502,595.00	61+92.75	6°07'45" LT.	4°46'29"	1200.00'	64.25'	128.37'	61+28.50	62+56.87
7	381,738.00	2,502,259.18	65+57.62	5°24'38" LT.	4°46'29"	1200.00'	56.70'	113.32'	65+00.92	66+14.24



PROFILE



SIDE INLET AT STA. 64+06±

LOCATIONS OF EXISTING UTILITIES ARE
APPROXIMATE. EXACT LOCATIONS ARE TO
BE DETERMINED IN THE FIELD BY THE
CONTRACTOR.

FOR CROSS SECTION
SEE DWG. 33-34

NO.	DATE	REVISION
SUBMITTED		
PROFESSIONAL		
APPROVED		
CHIEF - DIVISION OF MINE RECLAMATION		
APPROVED		
DIRECTOR - BUREAU OF DESIGN		

FINAL

S.J.M. JUL 28 1977

COMMONWEALTH OF PENNSYLVANIA
DEPARTMENT OF ENVIRONMENTAL RESOURCES
OFFICE OF RESOURCES MANAGEMENT

CONTRACT NO. SL 181-3-101.1

SUGAR NOTCH RUN AMD
ABATEMENT PROJECT
WARRIOR CREEK AND
SOLOMON CREEK WATERSHEDS

GEO - Technical Services
CONSULTING ENGINEERS & GEOLOGISTS
851 So. 19th St. HARRISBURG, PENNA.

**PLAN & PROFILE
STA. 56+00 TO STA. 69+00**