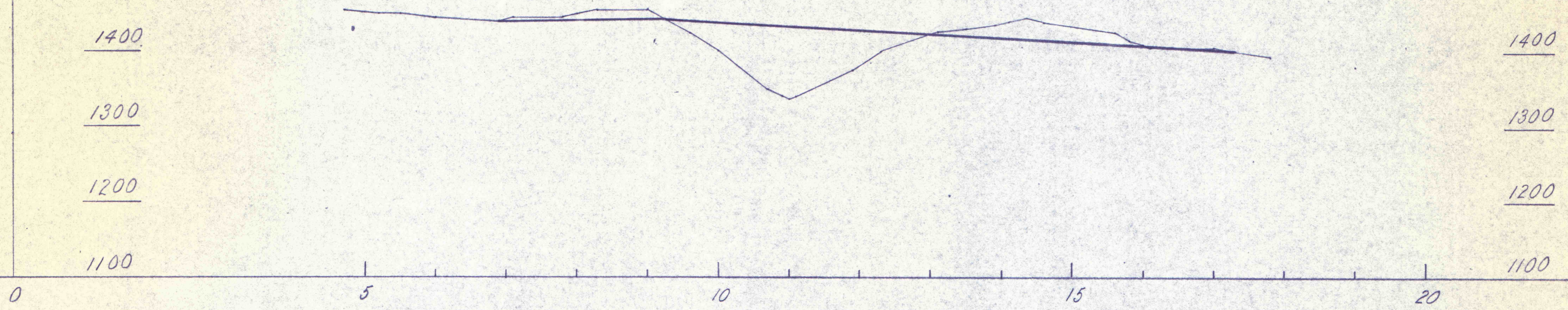
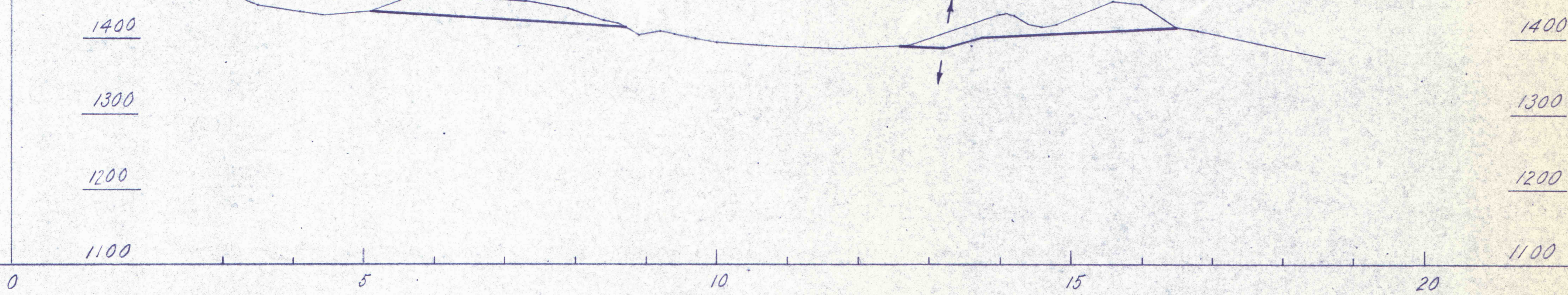


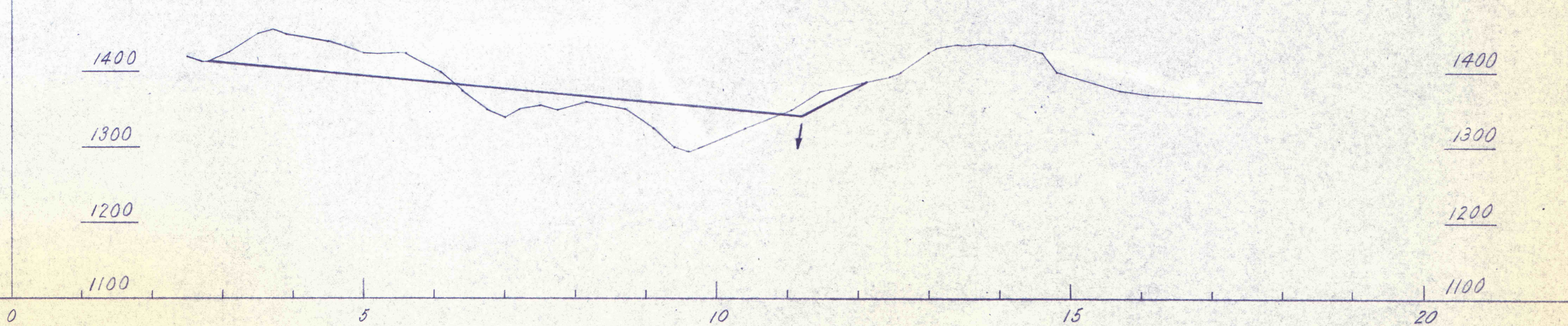
@ 228



@ 232



@ 236



NO.	DATE	REVISION	APPR.

SUBMITTED _____
 PROFESSIONAL _____
 APPROVED _____
 CHIEF - DIVISION OF MINE REHABILITATION _____
 APPROVED _____
 DIRECTOR - BUREAU OF CONSULTING SERVICES _____

COMMONWEALTH OF PENNSYLVANIA
 DEPARTMENT OF ENVIRONMENTAL RESOURCES
 OFFICE OF ENGINEERING AND CONSTRUCTION

PROJECT NO. SL-126-2-7

MINE DRAINAGE
 POLLUTION ABATEMENT
 SWATARA CREEK WATERSHED
 SCHUYLKILL COUNTY

BERGER ASSOCIATES, INC.
 Consulting Engineers
 P.O. Box 1943 Harrisburg, Penna.

PART 1A
 GRADING SECTIONS

DRAWN BY W. G.	DATE Feb. 2, 1973	DRAWING NO. 21 of 31
CHECKED BY M. W.	SCALE 1" = 100'	