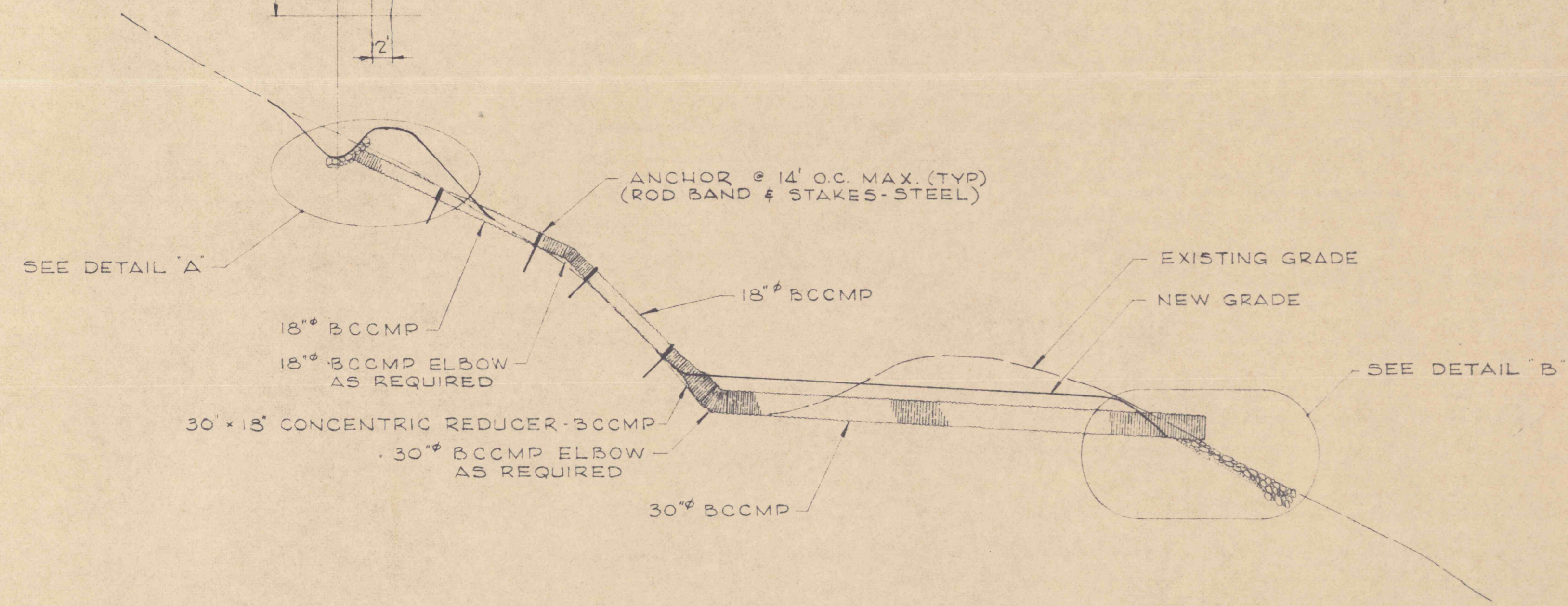
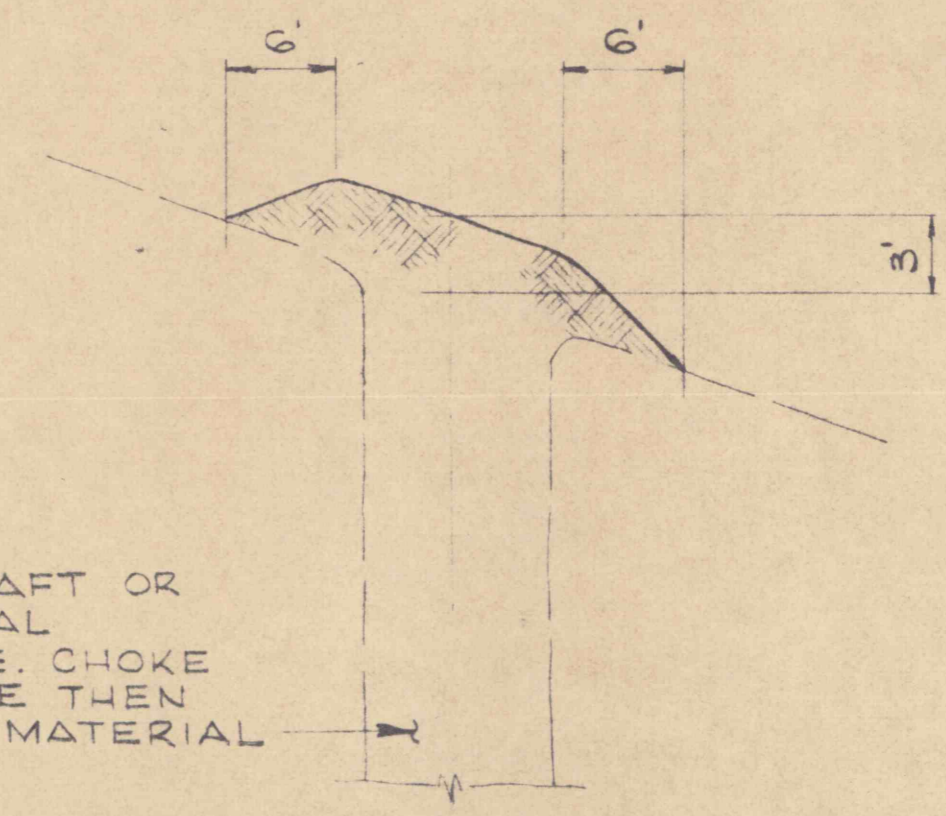


EXIST	5'
2 OR LESS	1
2 TO 3	1 TO 2
3 OR MORE	2



TYPICAL DITCH SECTION

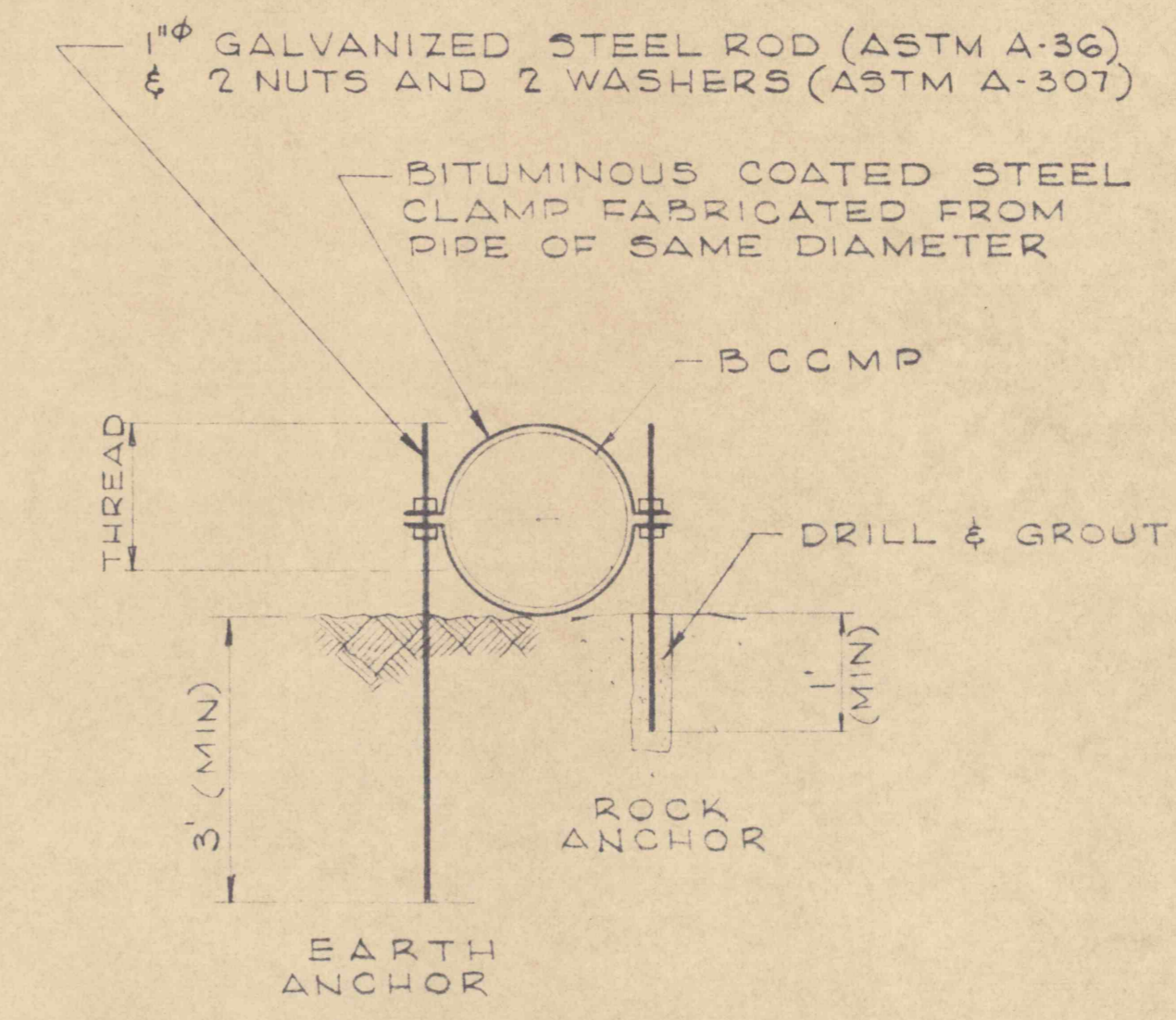
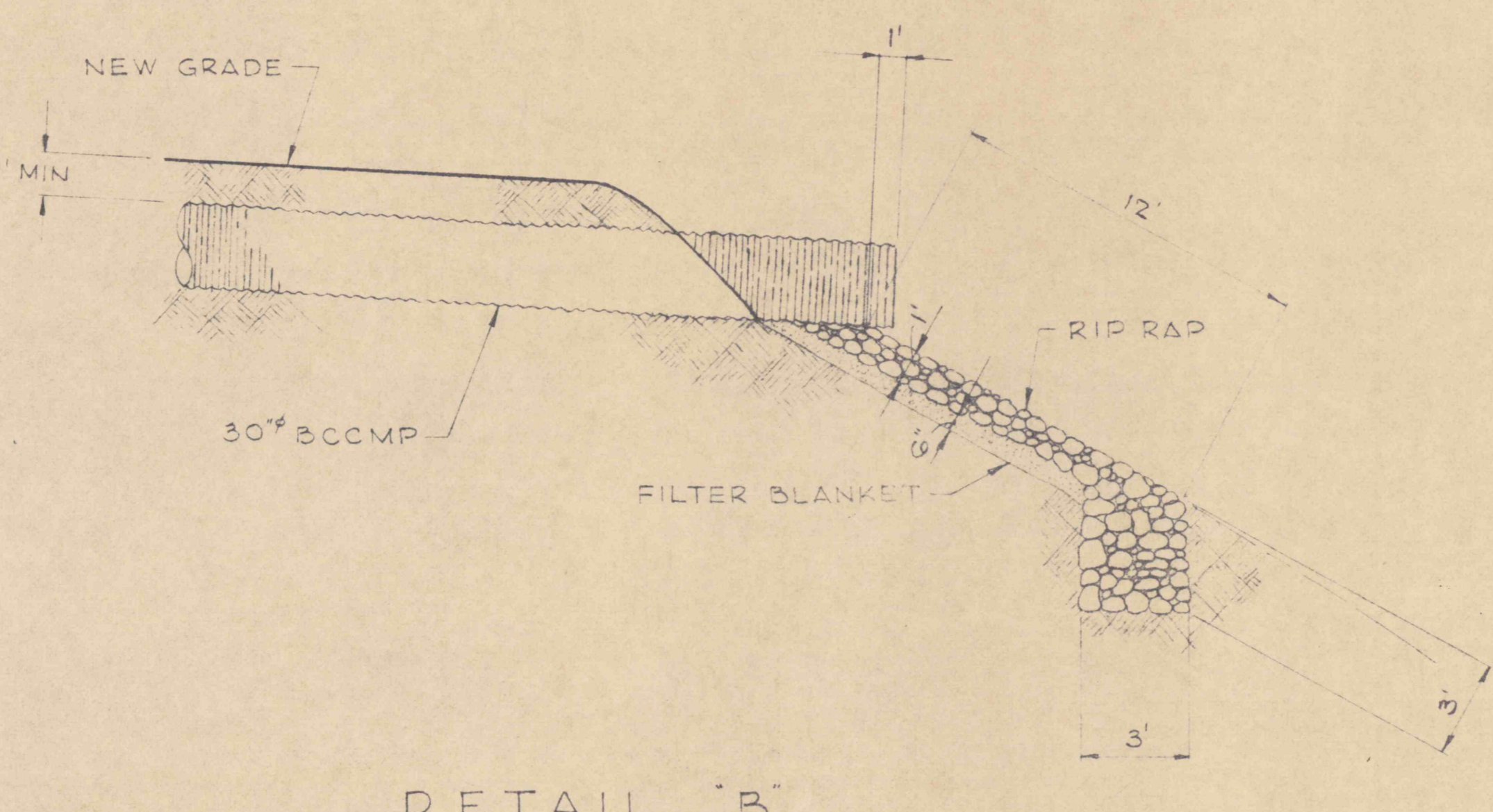
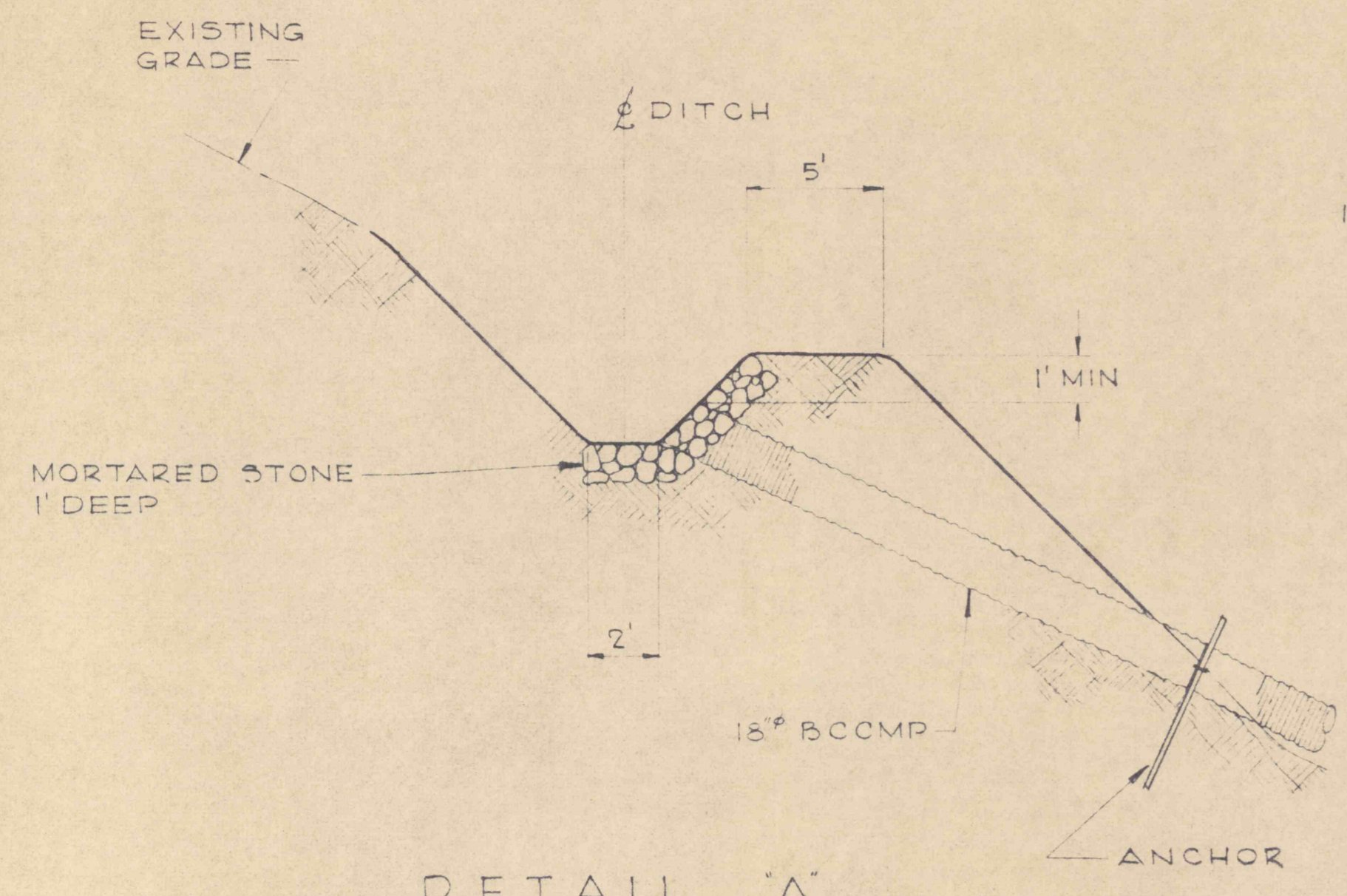


SECTION
TYPICAL PLAN & SECTION AT DRAINAGE STRUCTURE

TYPICAL METHOD OF FILLING EXISTING SHAFTS

SCALE: 1"=10' HORIZ, 1"=10' VERT

NOTE: SEE DRAWING NO. 1 THRU 5 FOR LOCATIONS, SIZES & SLOPES OF DRAINAGE STRUCTURES. SECTION & DETAILS ARE FOR STA 14+90, OTHER STATIONS TYPICAL.



TYPICAL ANCHOR DETAIL

EROSION AND SEDIMENTATION CONTROL PLAN
PREPARED FOR FANNICK'S INC. FRACKVILLE, PA.
By MICHAEL BAKER JR., INC. HARRISBURG, PA.

NO.	DATE	REVISION	APPR.

SUBMITTED: Thomas Richard Babcock
APPROVED: Thomas R. Babcock, Chief - Division of Mine Rehabilitation
APPROVED: [Signature], Director - Bureau of Consulting Services



COMMONWEALTH OF PENNSYLVANIA
DEPARTMENT OF ENVIRONMENTAL RESOURCES
OFFICE OF ENGINEERING AND CONSTRUCTION

PROJECT NO. SL-170
STRIP MINE RECLAMATION QUICK-START PROJECT "B"
STATE GAME LAND NO. 264
WICONISCO CREEK WATERSHED
DAUPHIN COUNTY, PENNA.

SANDERS AND THOMAS, INC.
CONSULTING ENGINEERS

EXECUTIVE OFFICES: POTTSTOWN, PENNSYLVANIA
BRANCH OFFICES: PHILADELPHIA, PA., LONG ISLAND, N.Y., MIAMI, FLA., PITTSBURGH, PA., BALTIMORE, MD., LONG BEACH, CALIF., WASHINGTON D.C.

DRAINAGE DETAILS

DRAWN BY: DAR	DATE: MAY 4, 1973	DRAWING NO.: 7 of 7
CHECKED BY: TB	SCALE: AS NOTED	

All design work on this plan (Drawing No. 7 of 7) legend and notes has been prepared by Sanders and Thomas, Inc. except as noted below.
None.