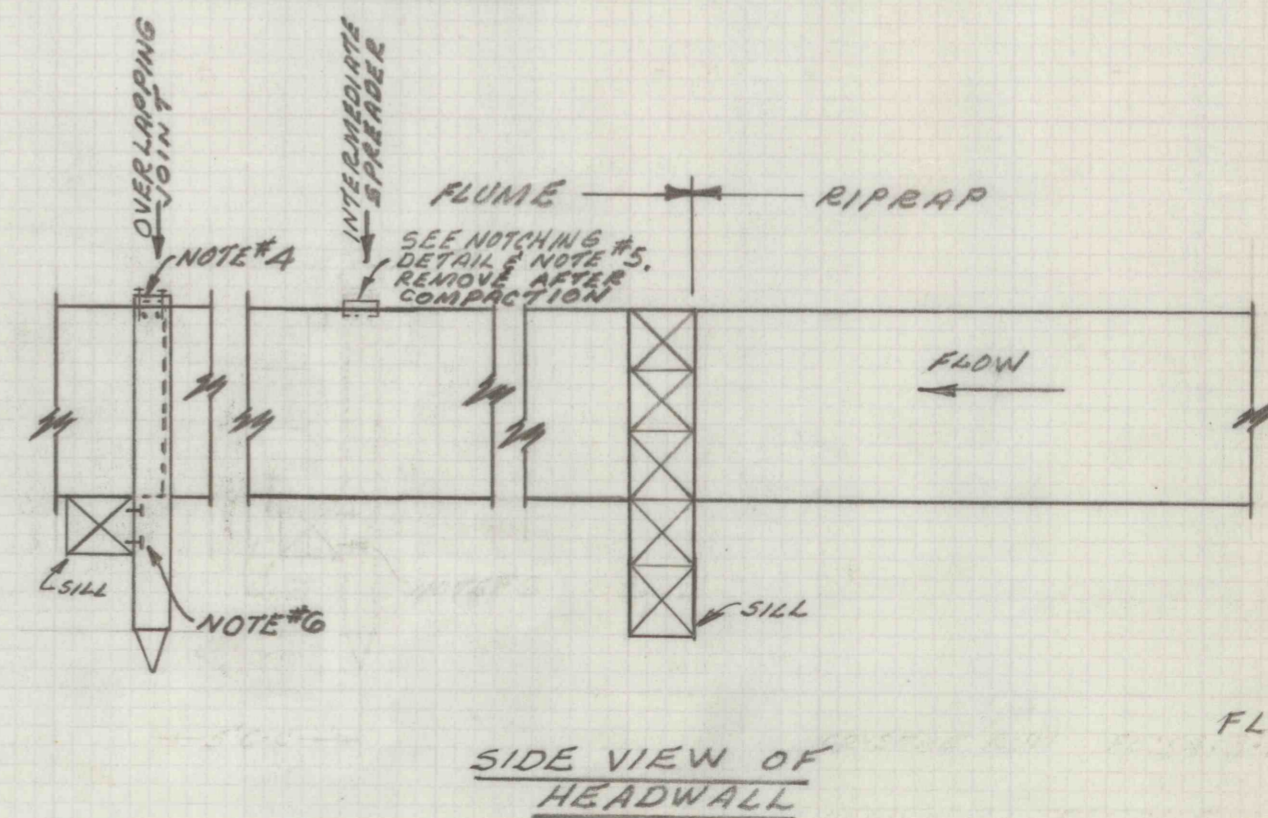
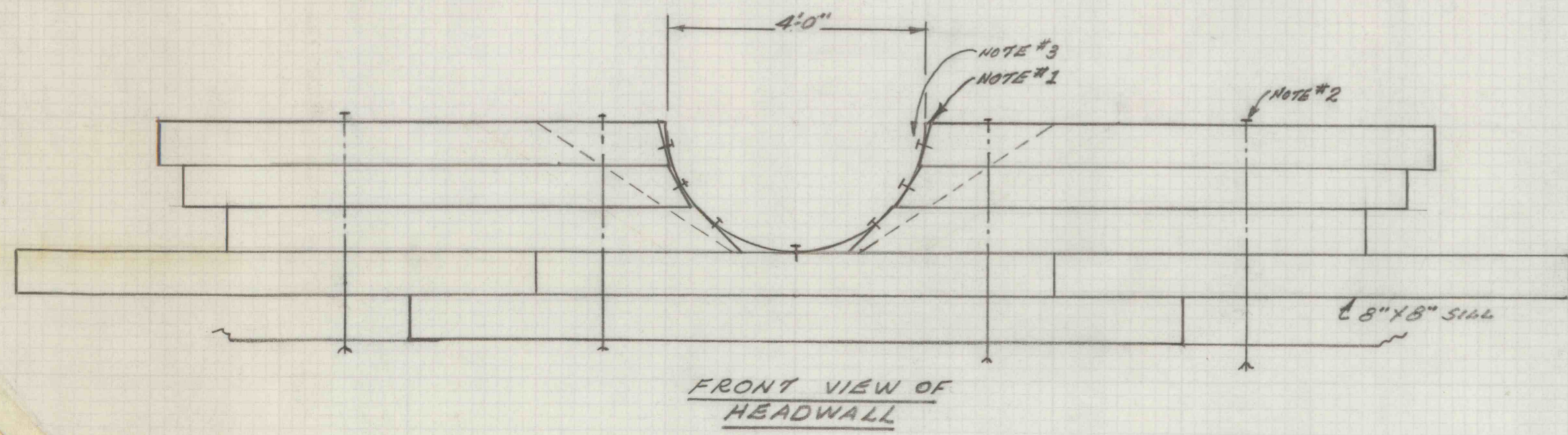
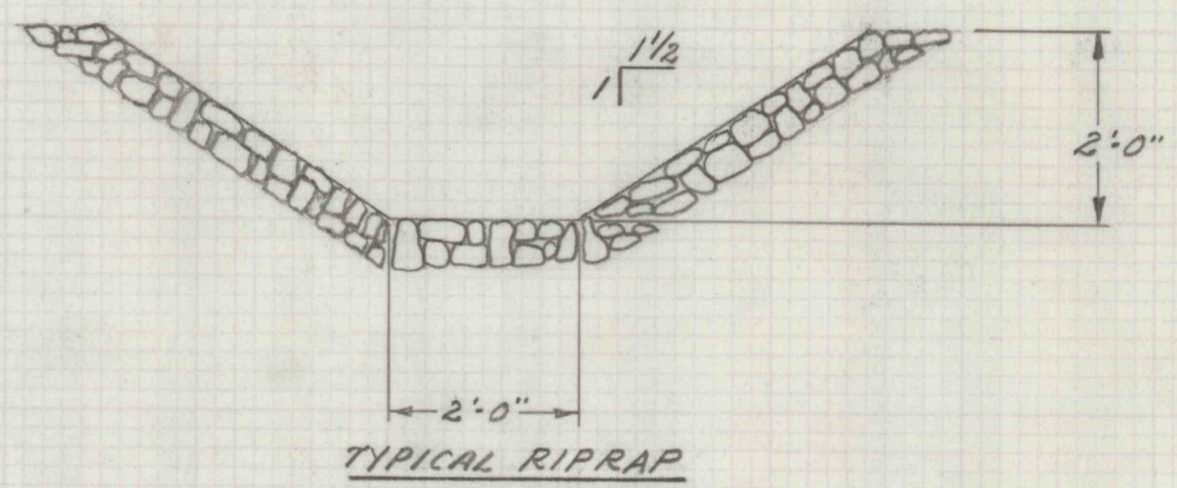
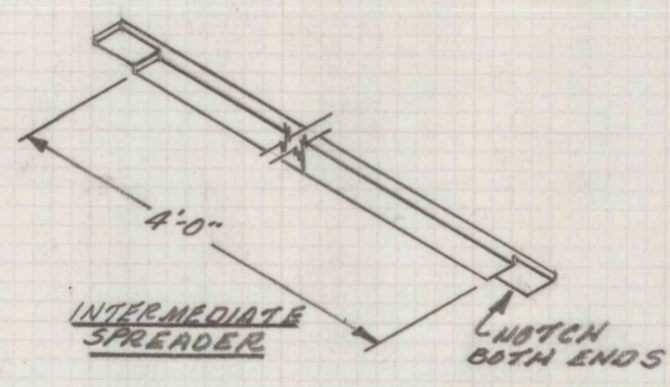
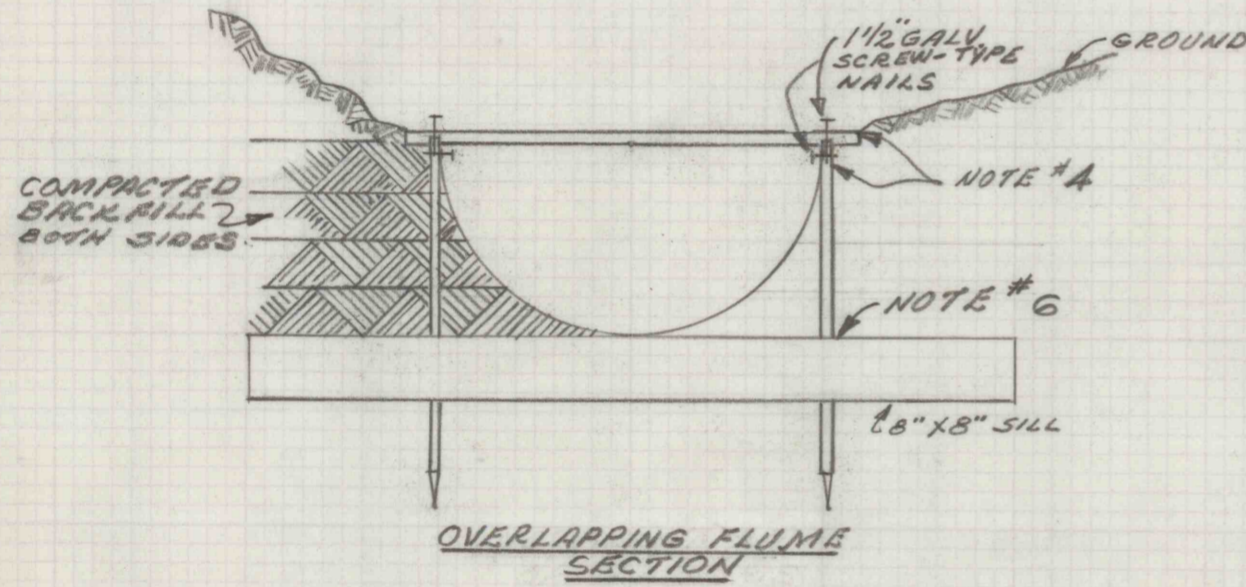


- NOTES: 1. MIN. SILL CHAMFER, FILL WITH TAR.
 2. ALL SILLS BOLTED TOGETHER W/ 1/2" GALV. BOLT.
 3. FASTEN W/ 20D GALV. NAILS. MIN 7 NAILS.
 4. 2" X 4" CREOSOTED STAKES (MIN. 30' LONG) - (2 REQ'D) & 2" X 4" " SPREADER (1 REQ'D) - NOTCHED TWO (2) PLACES FOR STAKES. ADD SILL. LOWEST FLUME SECTION OVERLAPPED 3" BY NEXT SECTION. STAKES DRIVEN AT OVERLAP. SEAL JOINT WITH MASTIC SEALING COMPOUND.
 5. 2" X 4" INTERMEDIATE SPREADER. 5' C-C. SEE BELOW.
 6. TOE-NAIL STAKES TO SILL WITH 1 1/2" GALV. SCREW-TYPE NAILS.



CRYSTAL RUN NO FE:54-3-101.1
 FLUME & HEAD WALL DETAILS
 SCALE 1" = 2' JUNE 13, 1977
 RESOURCES MANAGEMENT
 POTTSVILLE OFFICE