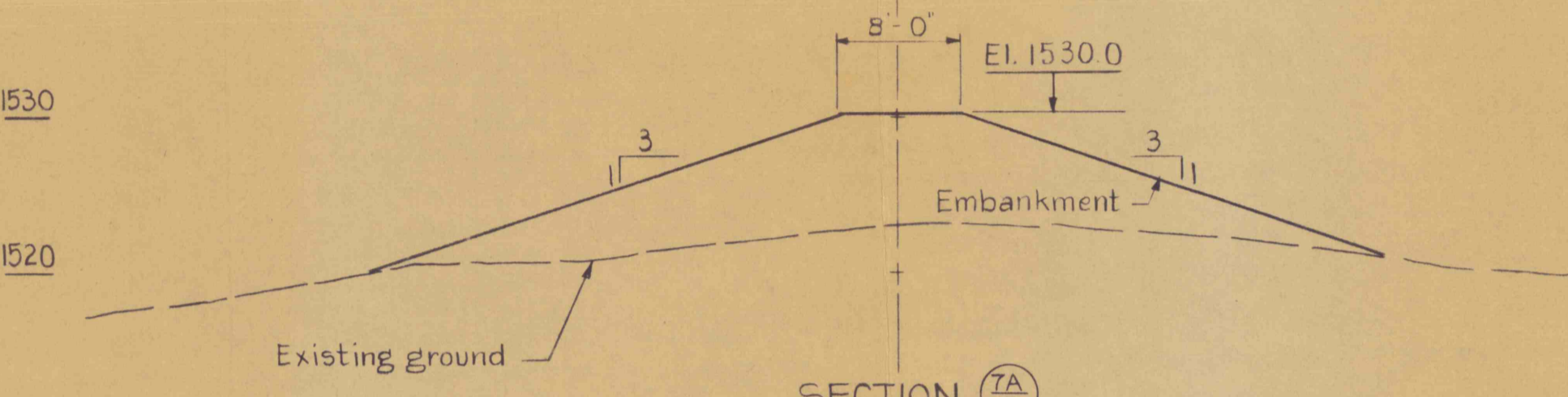


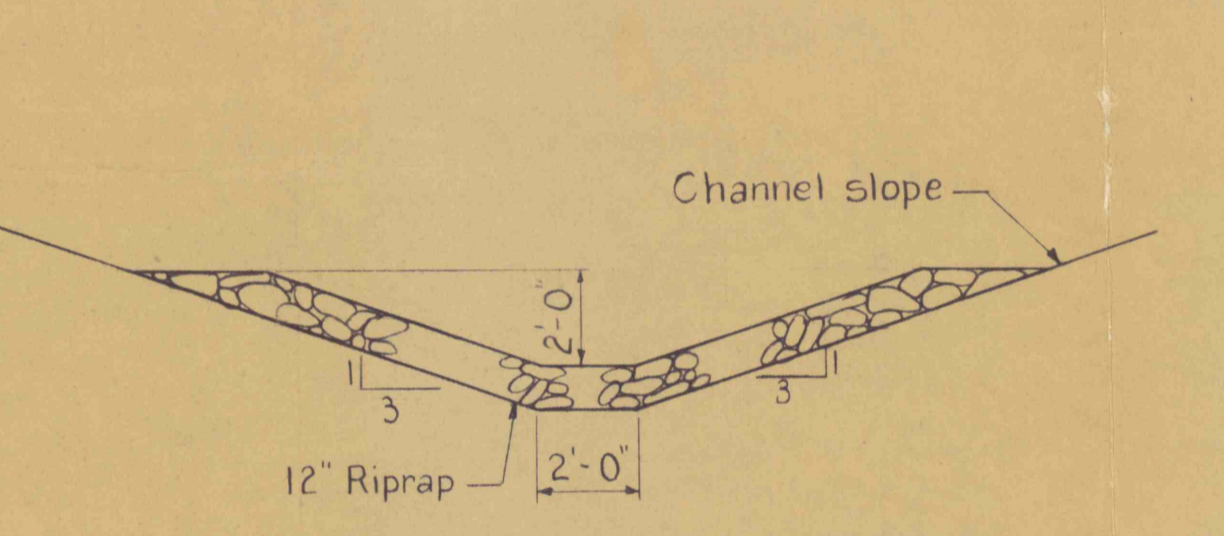
PROFILE



SECTION TA

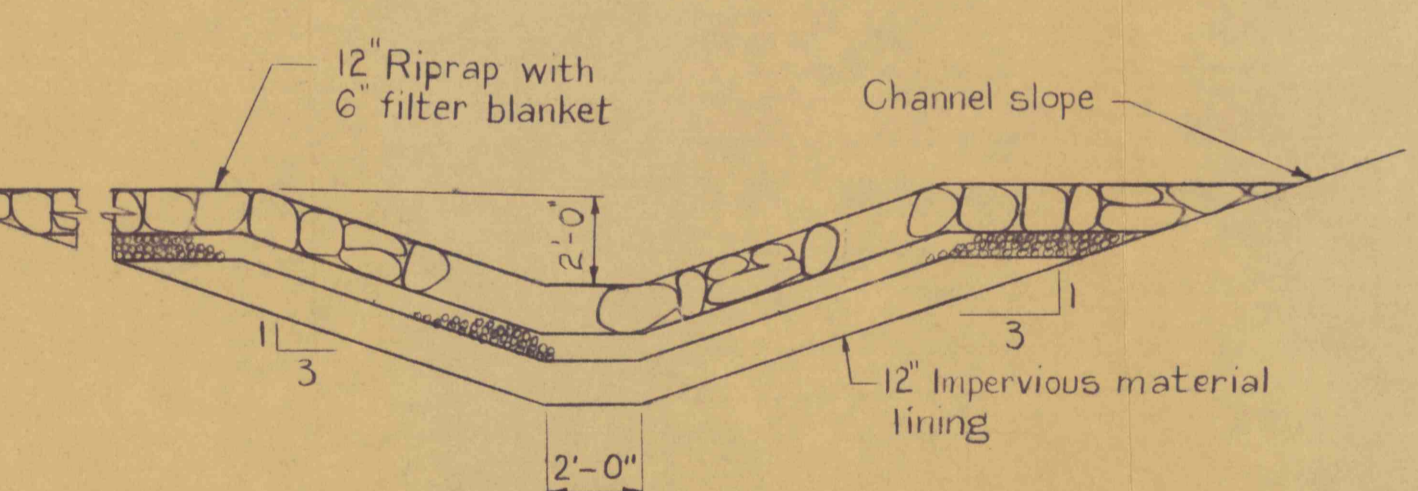
CLOSURE LEVEL

No Scale



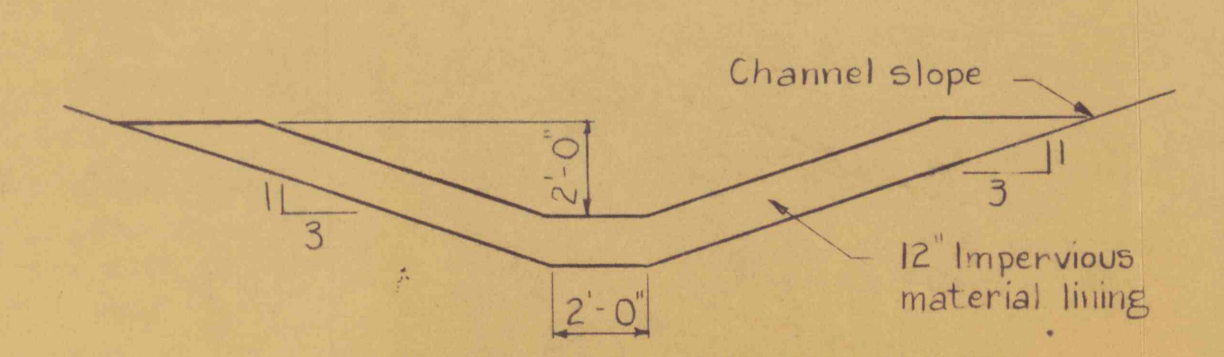
RIPRAP CHANNEL
TYPICAL SECTION STA. 13+00 TO STA. 16+00

(Unless otherwise specified)
No Scale



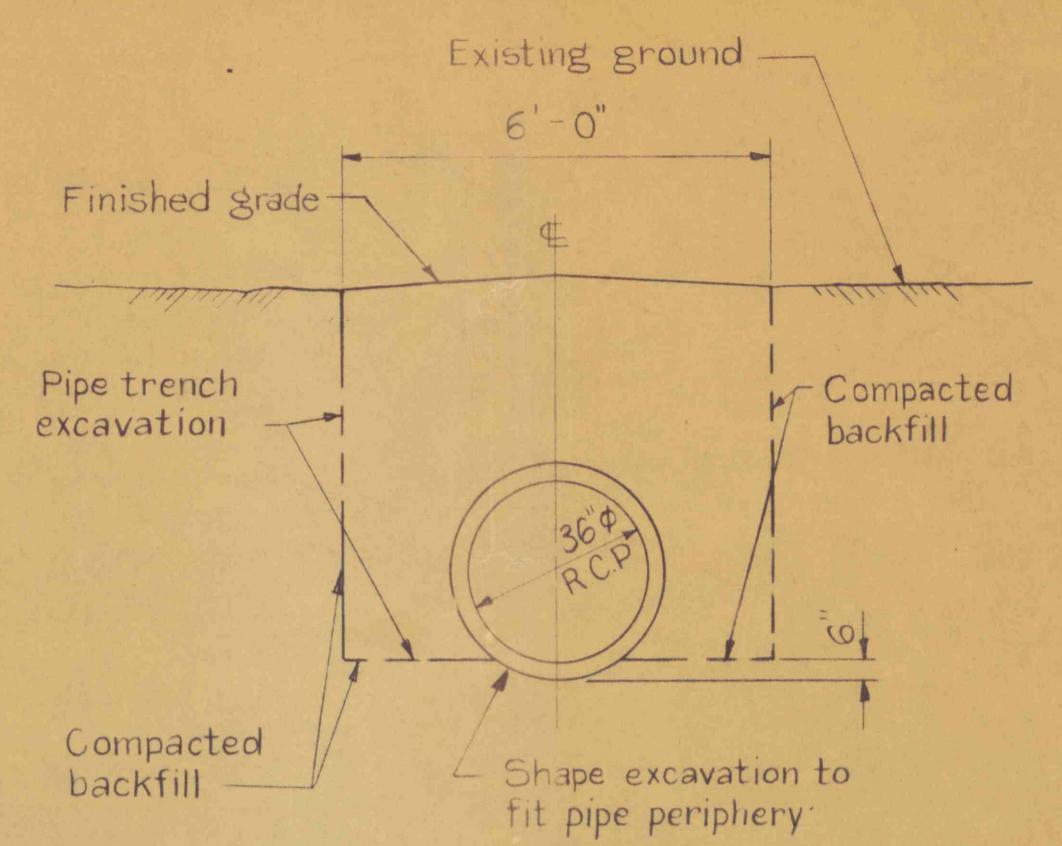
RIPRAP CHANNEL WITH IMPERVIOUS LINING
TYPICAL SECTION STA. 22+40 TO STA. 23+65

(Unless otherwise specified)
No Scale



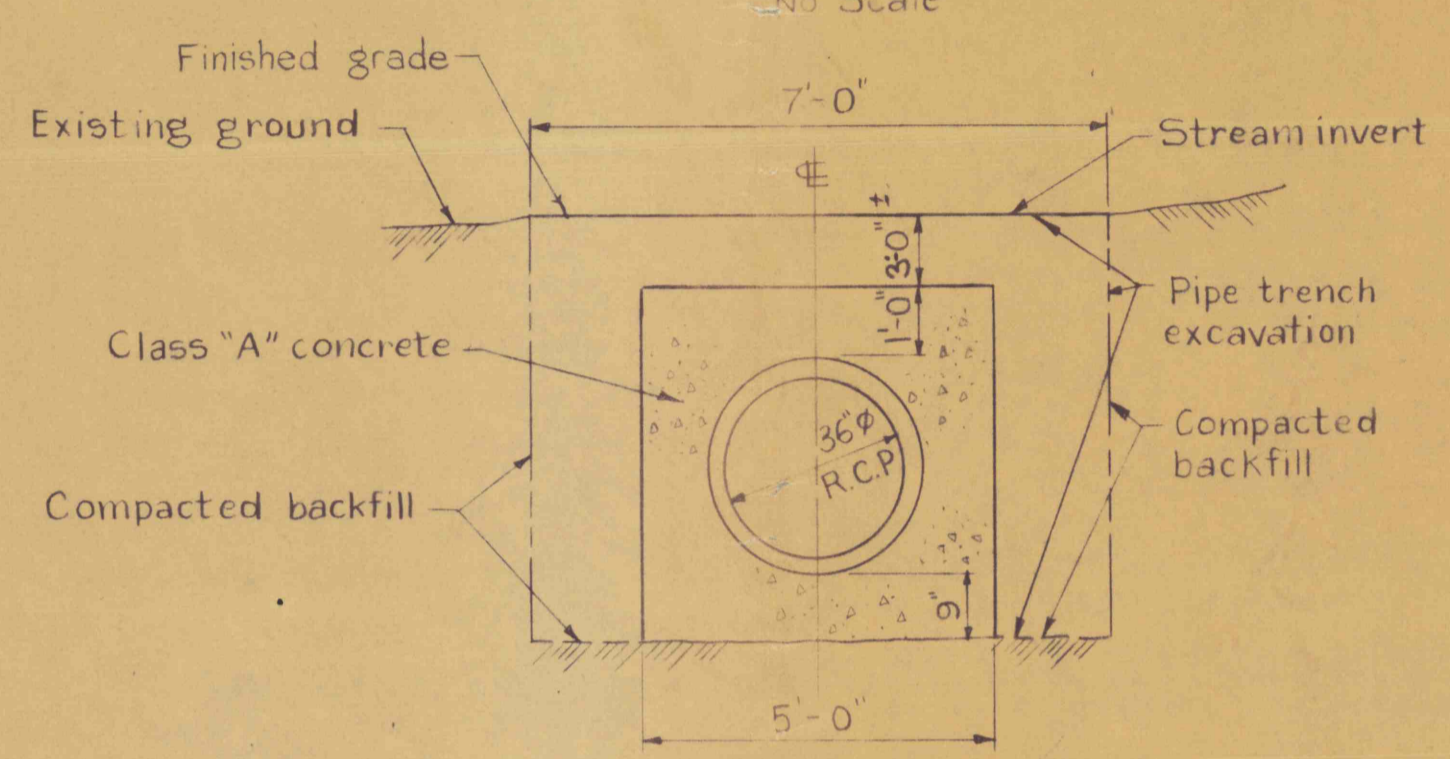
IMPERVIOUS LINED CHANNEL

TYPICAL SECTION STA. 19+00 TO STA. 22+40
No Scale



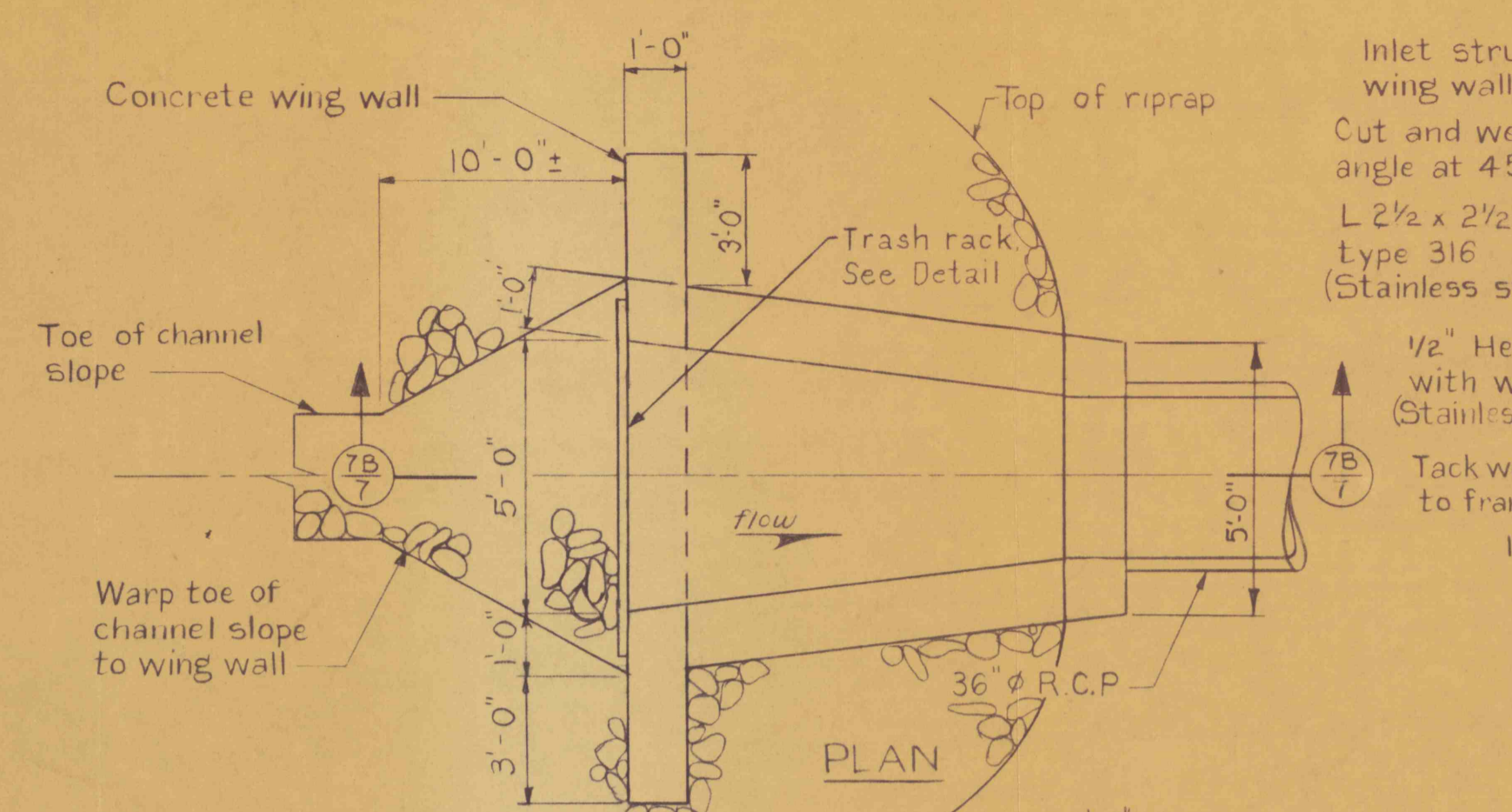
PIPE BEDDING DETAIL

No Scale

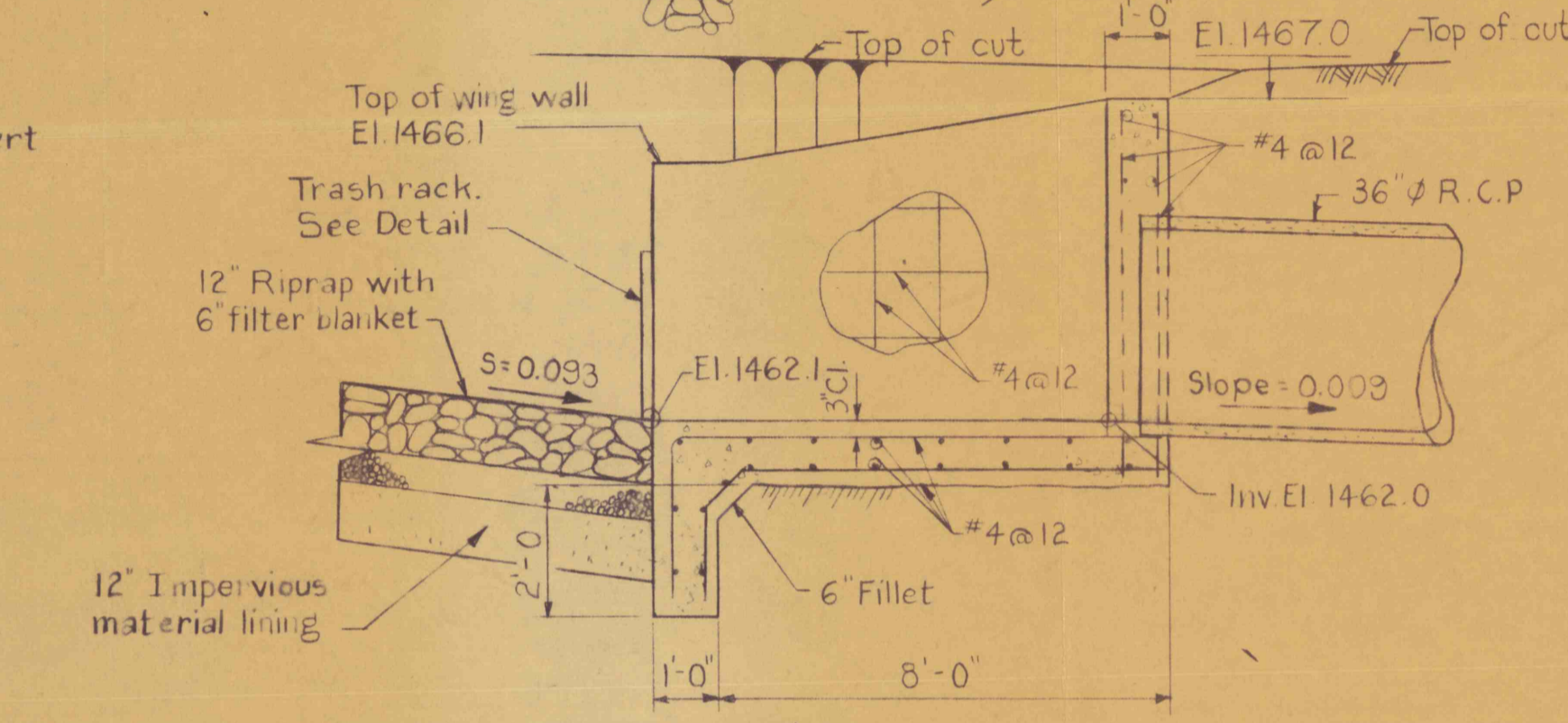


PIPE CASING DETAIL

No Scale



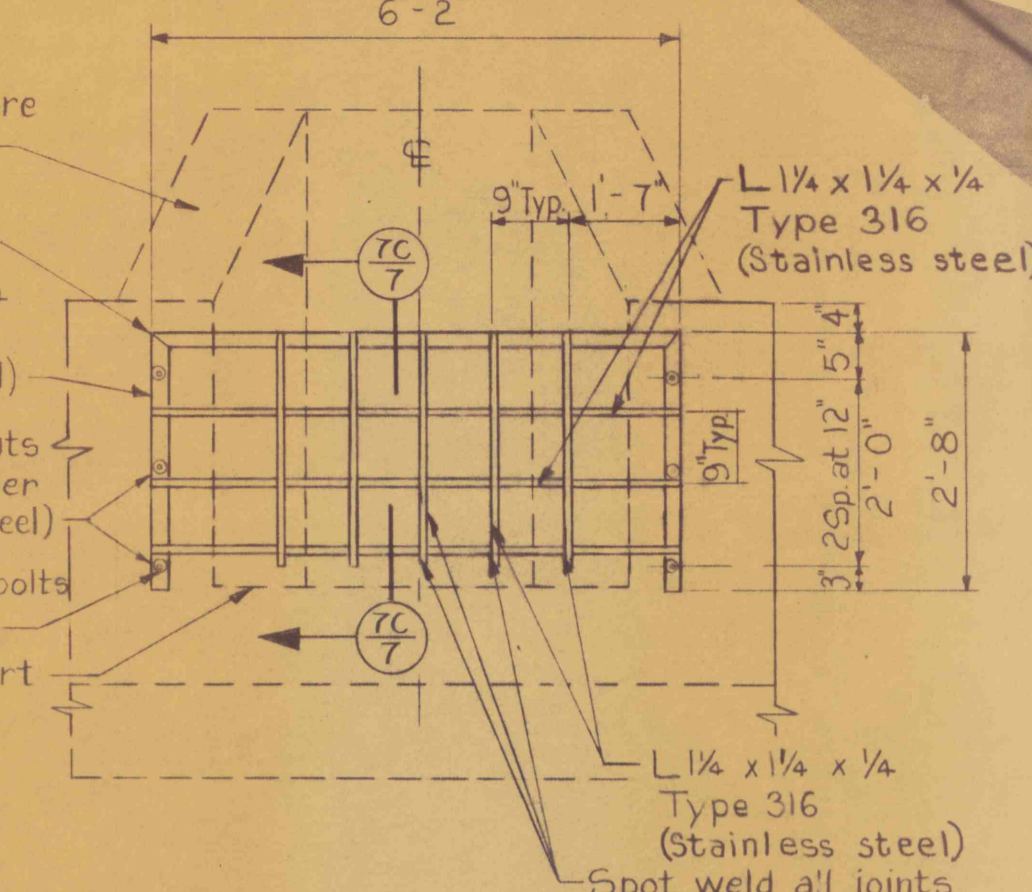
PLAN



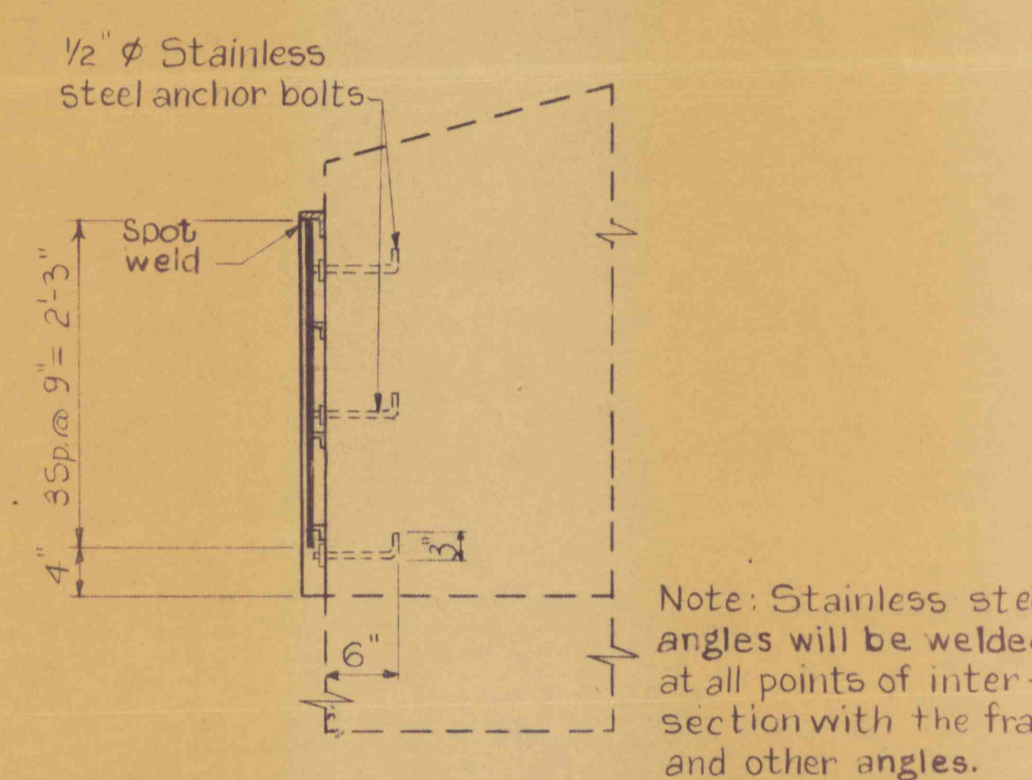
SECTION TB

INLET STRUCTURE

No Scale



ELEVATION - TRASH RACK

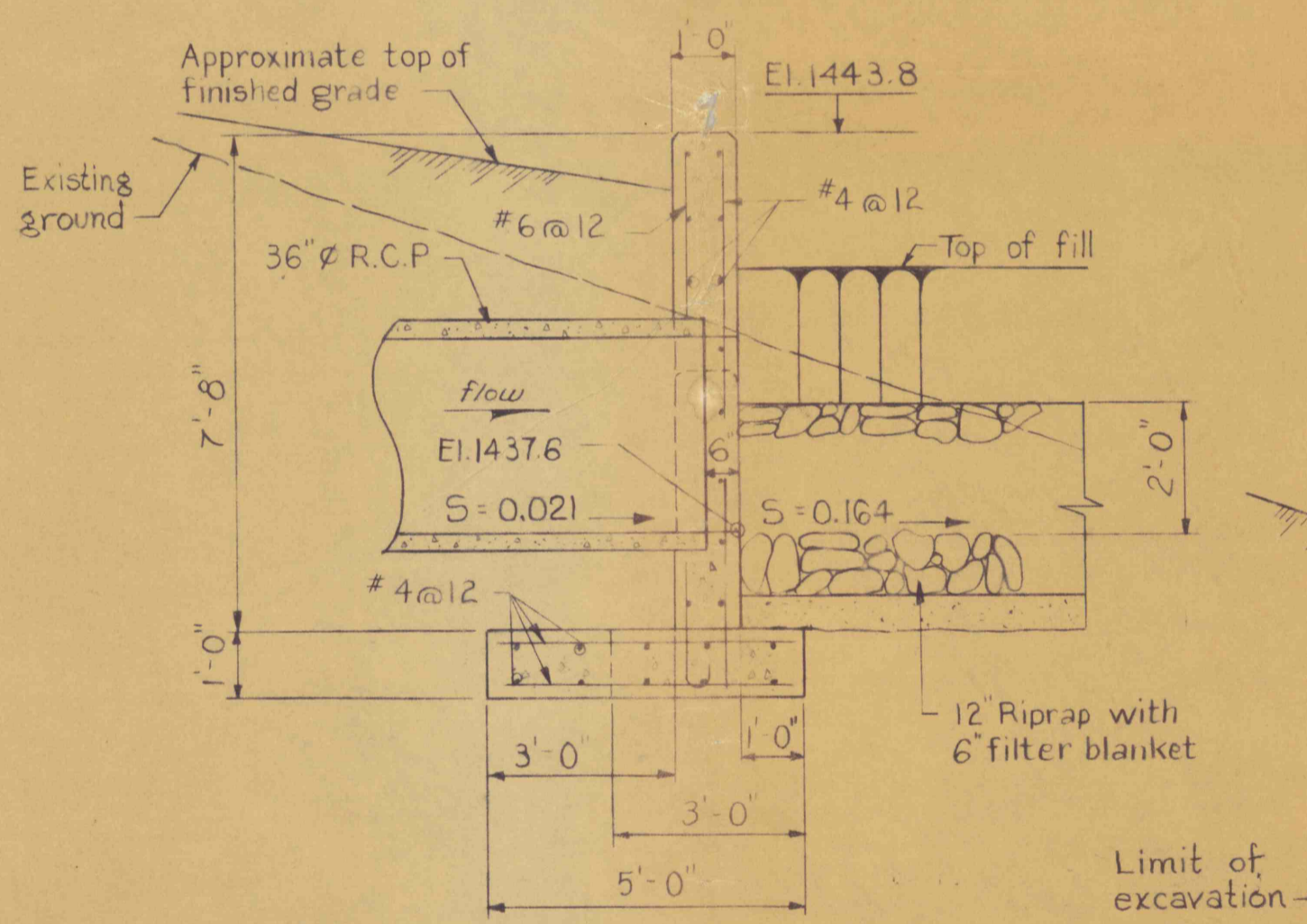


SECTION TC

TRASH RACK DETAILS

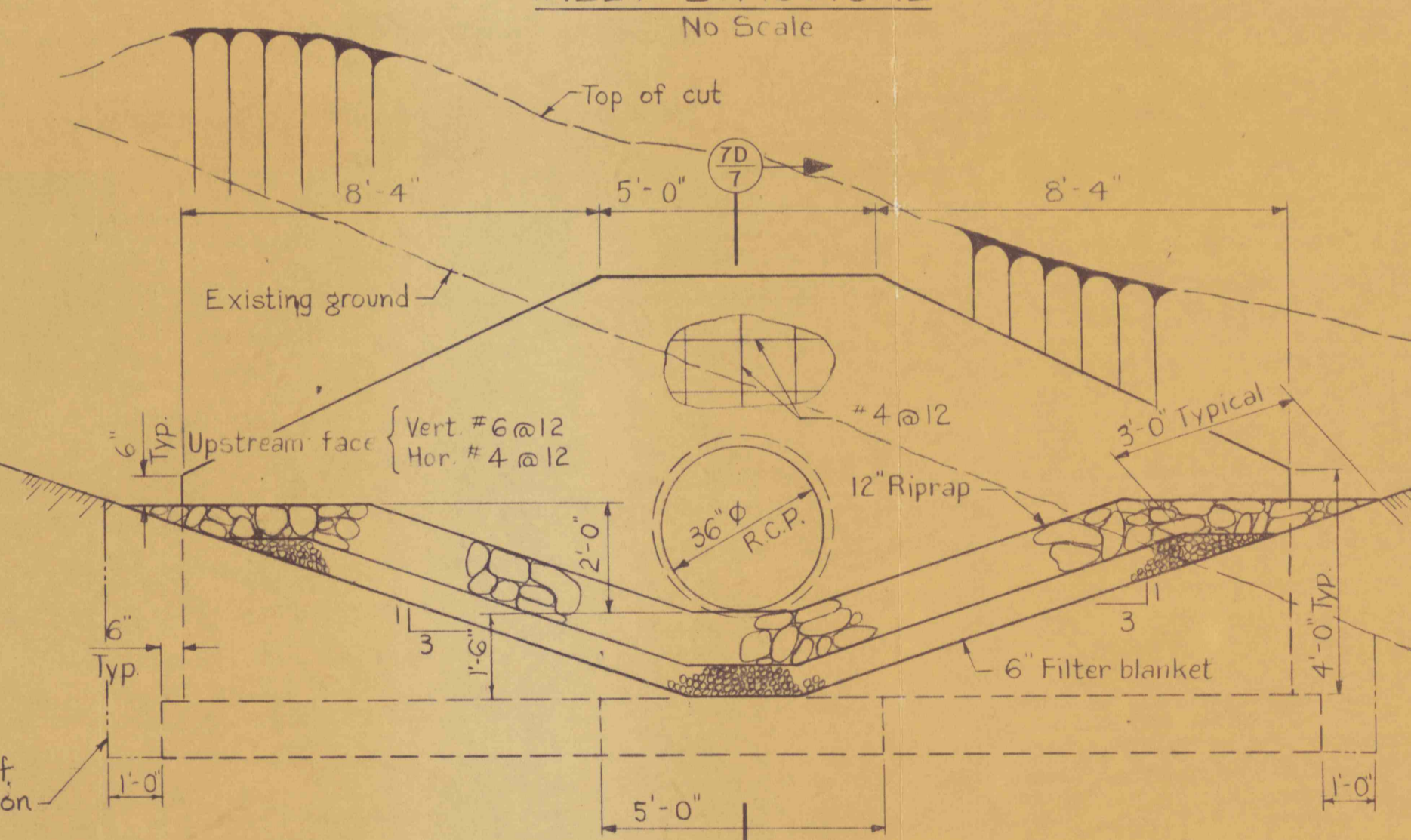
No Scale

Note: Stainless steel angles will be welded at all points of intersection with the frame and other angles.



SECTION TD

No Scale

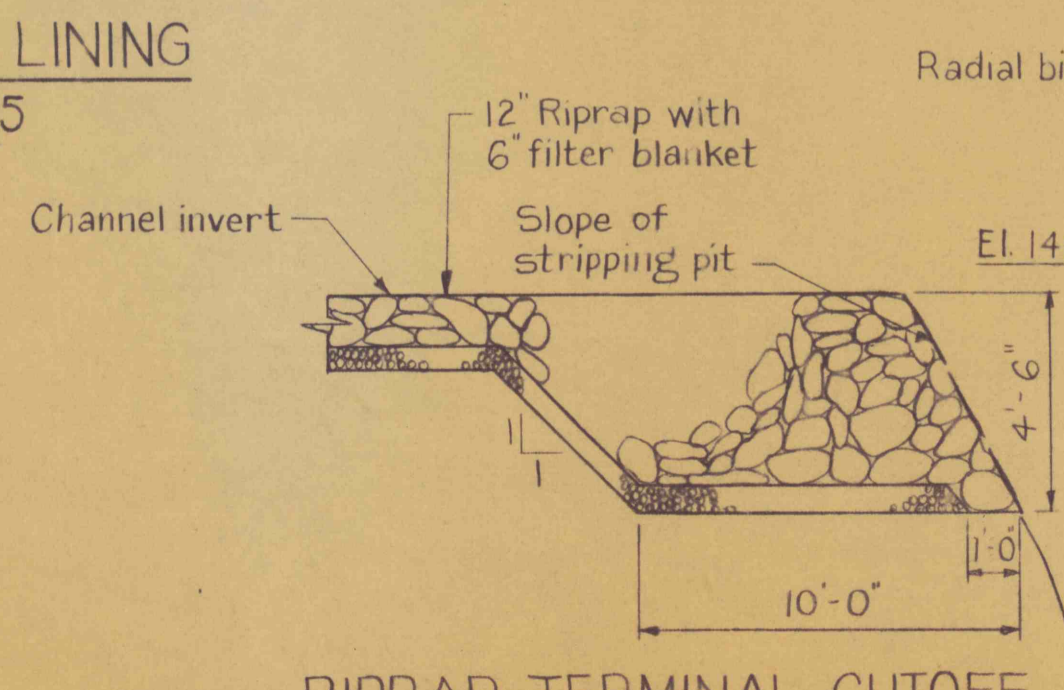


ELEVATION

No Scale

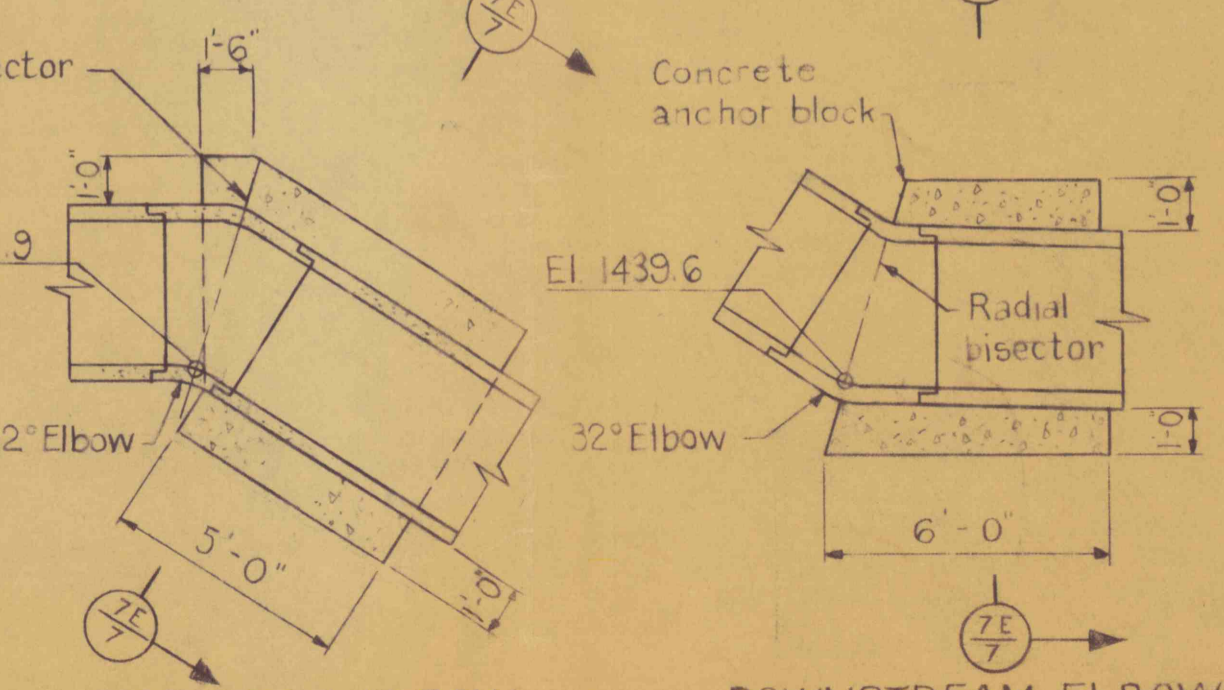
OUTLET STRUCTURE

No Scale



RIPRAP TERMINAL CUTOFF

No Scale



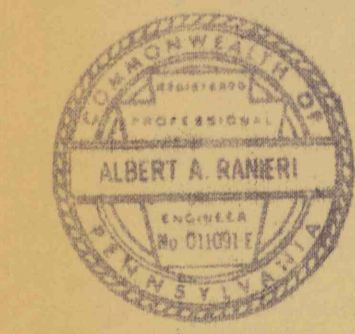
PIPE ANCHOR BLOCK DETAILS

Scale: 1/4 in. = 1 ft.

NOTES:

1. ALL concrete is Class "A" concrete.
2. Chamfer all exposed edges, horizontal and vertical joints in walls 3/4" unless otherwise noted.
3. Steel reinforcement is 2" clear (edge of steel to surface of concrete) unless otherwise noted.
4. Profile of closure levee is shown looking downstream of present AMD flow.
5. All surfaces of concrete structures and reinforced concrete pipe shall be coated with asphaltic cement.

NO.	DATE	REVISION	APPR.
SUBMITTED <i>B. Kao</i> PROJECT CO-ORDINATOR			
APPROVED <i>Albert A. Ranieri</i> CHIEF - DIVISION OF MINE RECLAMATION			
APPROVED <i>Dr. Renege</i> DIRECTOR - BUREAU OF DESIGN			



COMMONWEALTH OF PENNSYLVANIA
DEPARTMENT OF ENVIRONMENTAL RESOURCES
OFFICE OF RESOURCES MANAGEMENT

PROJECT NO. FE54:3-101.1

DIVERSION OF
ACID MINE DRAINAGE
CRYSTAL RUN WATERSHED

FOSTER TWP. SCHUYLKILL CO., PA.

DETAILS

DRAWN BY <i>424</i>	DATE	DRAWING NO.
CHECKED BY	SCALE As shown	7 of 7