

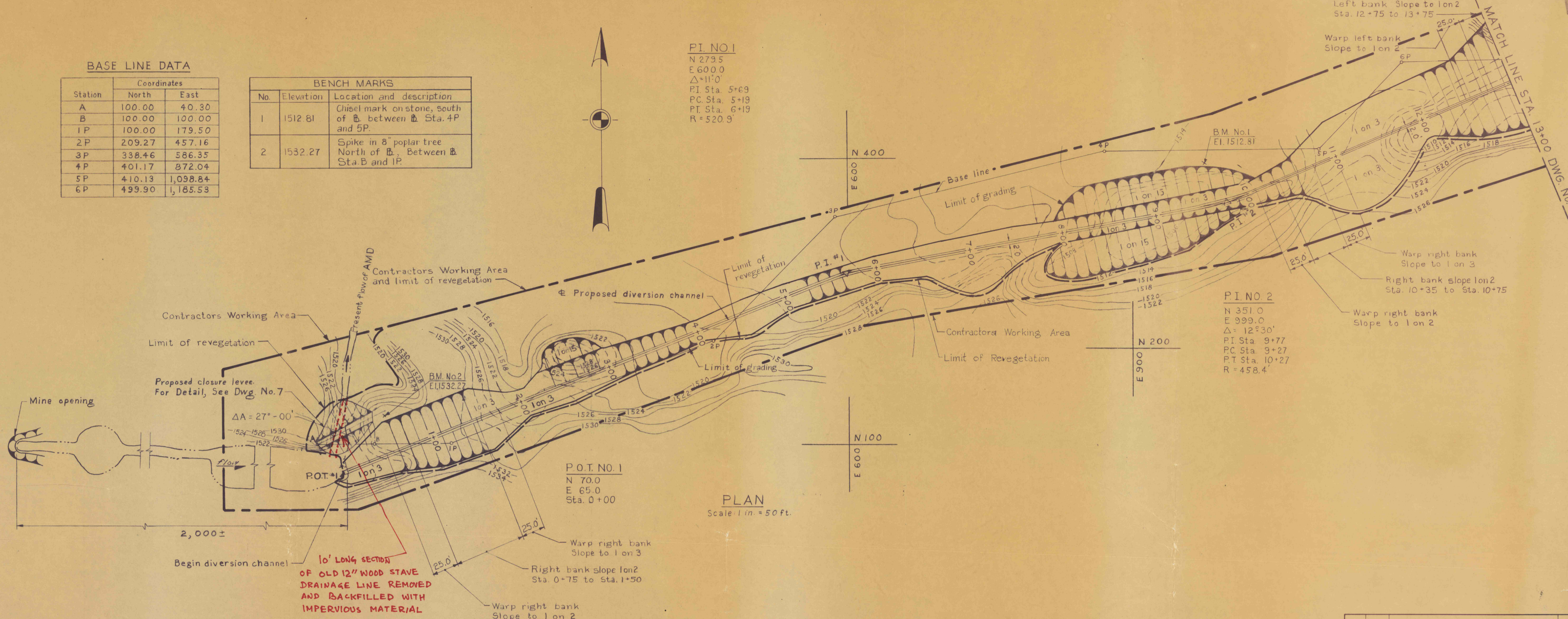
BASE LINE DATA

Station	Coordinates	
	North	East
A	100.00	40.30
B	100.00	100.00
1P	100.00	179.50
2P	209.27	457.16
3P	338.46	586.35
4P	401.17	872.04
5P	410.13	1,098.84
6P	499.90	1,185.53

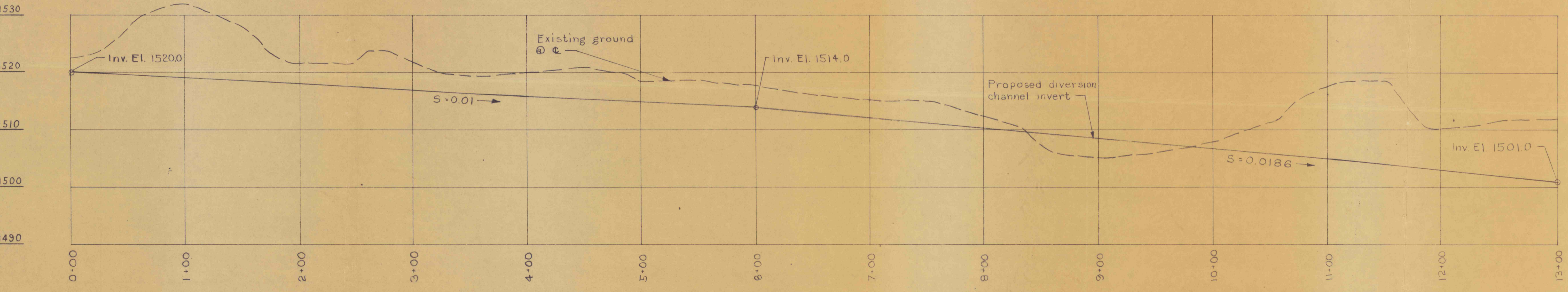
BENCH MARKS		
No.	Elevation	Location and description
1	1512.81	Chisel mark on stone, south of B, between Sta. 4P and 5P.
2	1532.27	Spike in 8" poplar tree North of B, Between Sta. B and 1P.

PI NO 1
 N 279.5
 E 600.0
 $\Delta = 11^{\circ}0'$
 PI Sta. 5+69
 PC Sta. 5+19
 PT Sta. 6+19
 R = 520.9

PI NO 2
 N 351.0
 E 999.0
 $\Delta = 12^{\circ}30'$
 PI Sta. 9+77
 PC Sta. 9+27
 PT Sta. 10+27
 R = 458.4



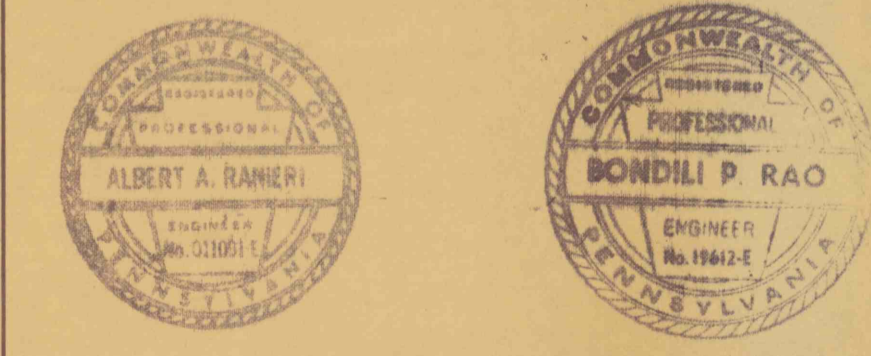
PLAN
 Scale: 1 in. = 50 ft.



PROFILE
 Scale { Hor.: 1 in. = 50 ft.
 Vert.: 1 in. = 10 ft.

- GENERAL NOTES:
- All elevations shown on the drawings are Pennsylvania Department of Environmental Resources' datum. Elevations of the features are to be taken from the bench marks' indicated on the drawings.
 - Existing contours within the grading limits are shown in dashed lines.
 - Adjustments in alignment and grade are permitted to facilitate construction, subject to the approval of the Engineer.
 - All areas within the Contractors Working Area and access if damaged, must be regraded, reseeded and restored to their original condition.
 - For cross sections and details see Dwg. Nos. 5, 6 and 7.

NO.	DATE	REVISION	APPR.
SUBMITTED			
APPROVED			
APPROVED			



COMMONWEALTH OF PENNSYLVANIA
 DEPARTMENT OF ENVIRONMENTAL RESOURCES
 OFFICE OF RESOURCES MANAGEMENT

PROJECT NO. FE54:3-101.1

DIVERSION OF
 ACID MINE DRAINAGE
 CRYSTAL RUN WATERSHED

FOSTER TWP. SCHUYLKILL CO., PA.

PLAN AND PROFILE

DRAWN BY D.M.C.	DATE	DRAWING NO. 3 of 7
CHECKED BY	SCALE As shown	