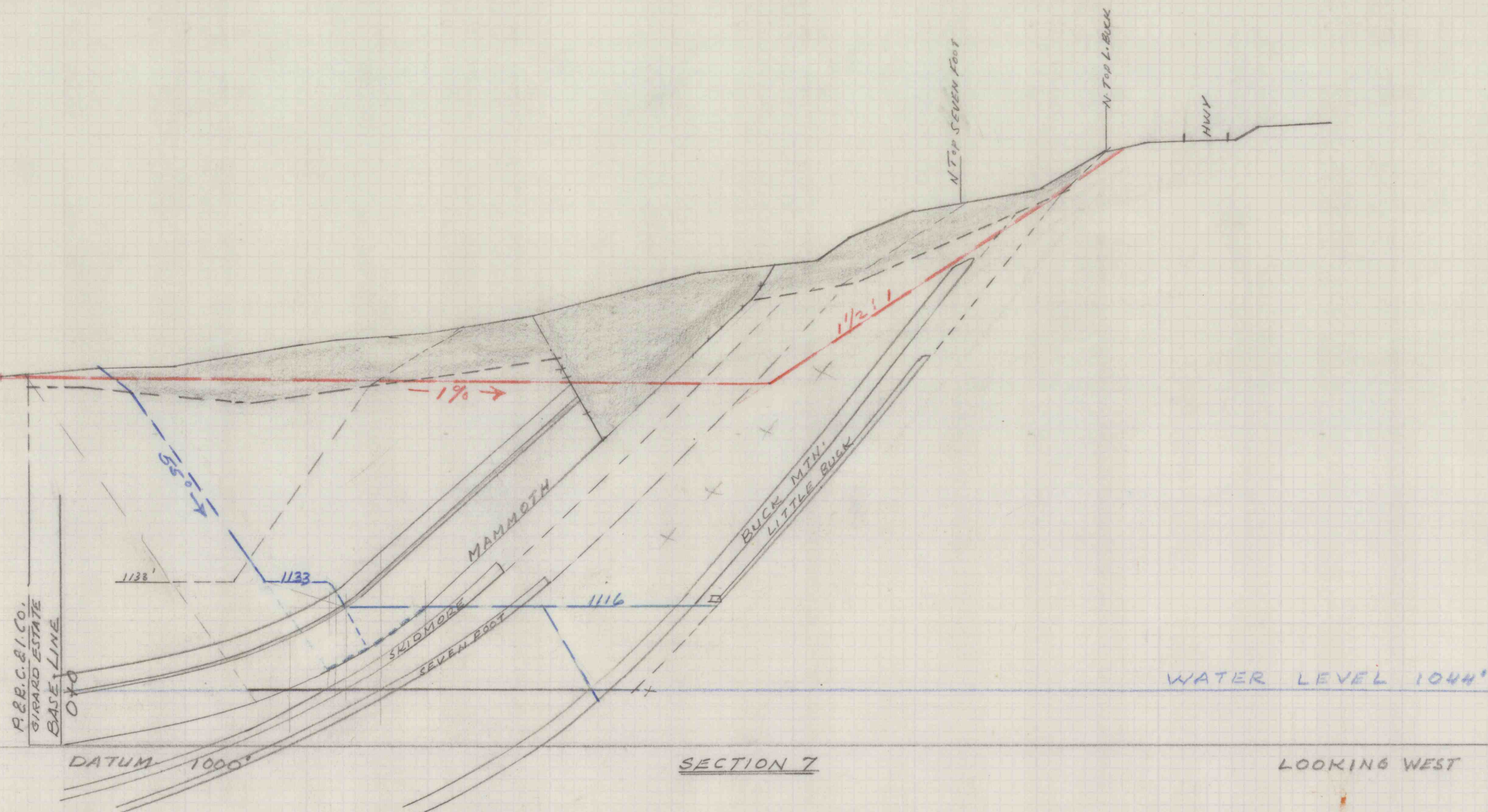


34005'



P.R.C. & I. CO.
GIRARD ESTATE
BASELINE
0+0

DATUM 1000'

SKIDMORE
SEVEN FOOT
MAMMOTH

BUCK MTH.
LITTLE BUCK

SECTION 7

WATER LEVEL 1044'

LOOKING WEST

N TOP SEVEN FOOT

N TOP L. BUCK

HWY

700'