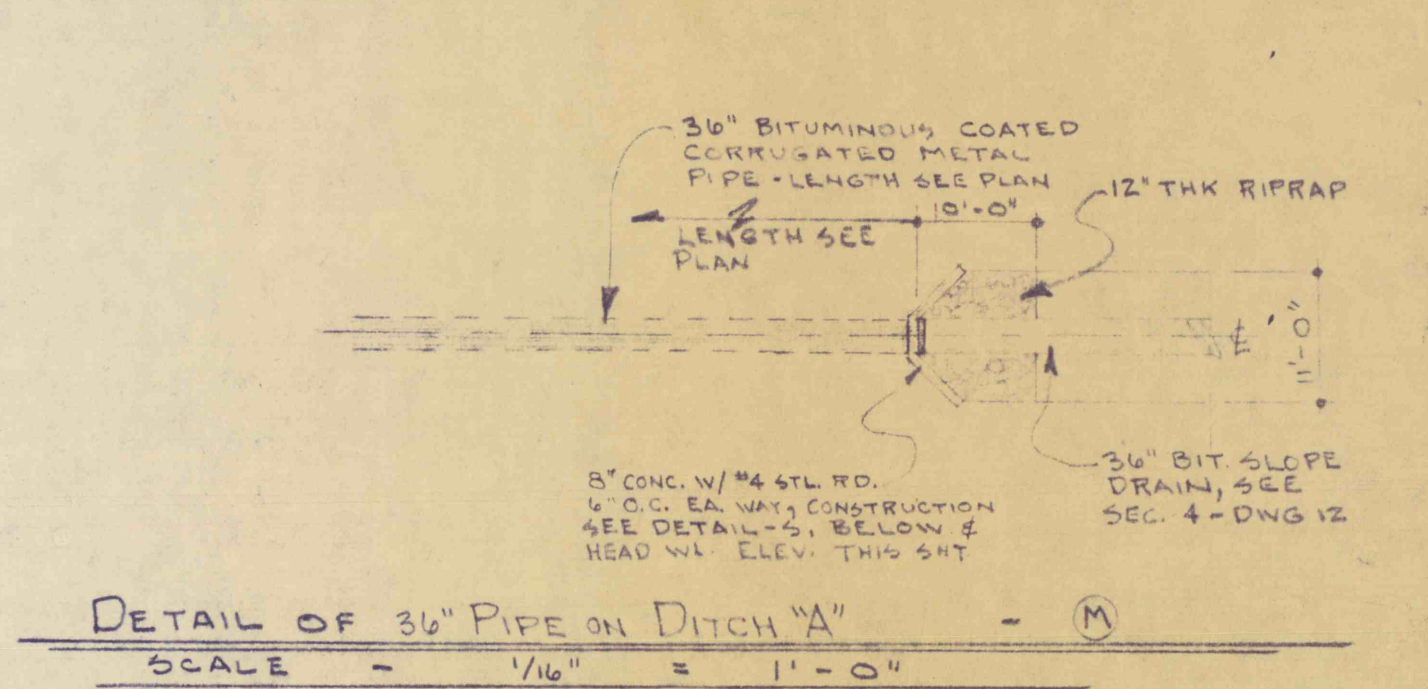
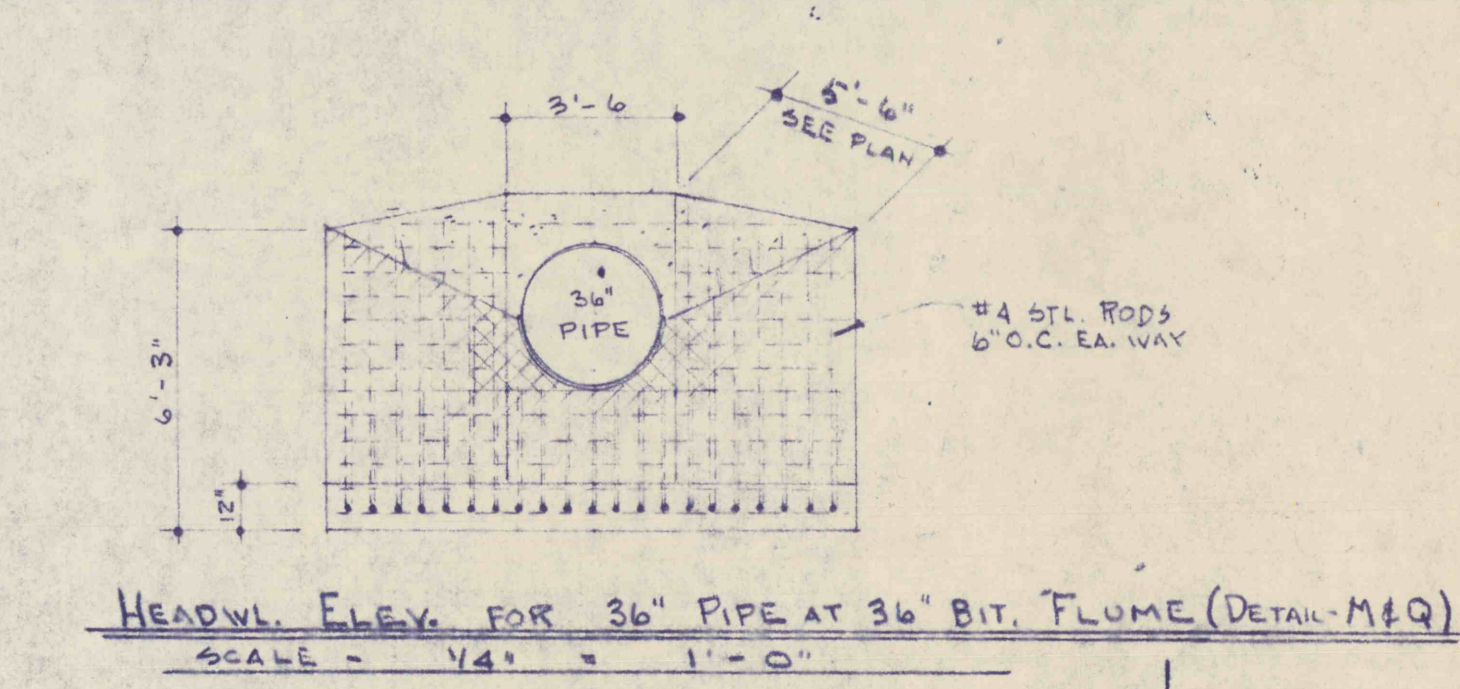
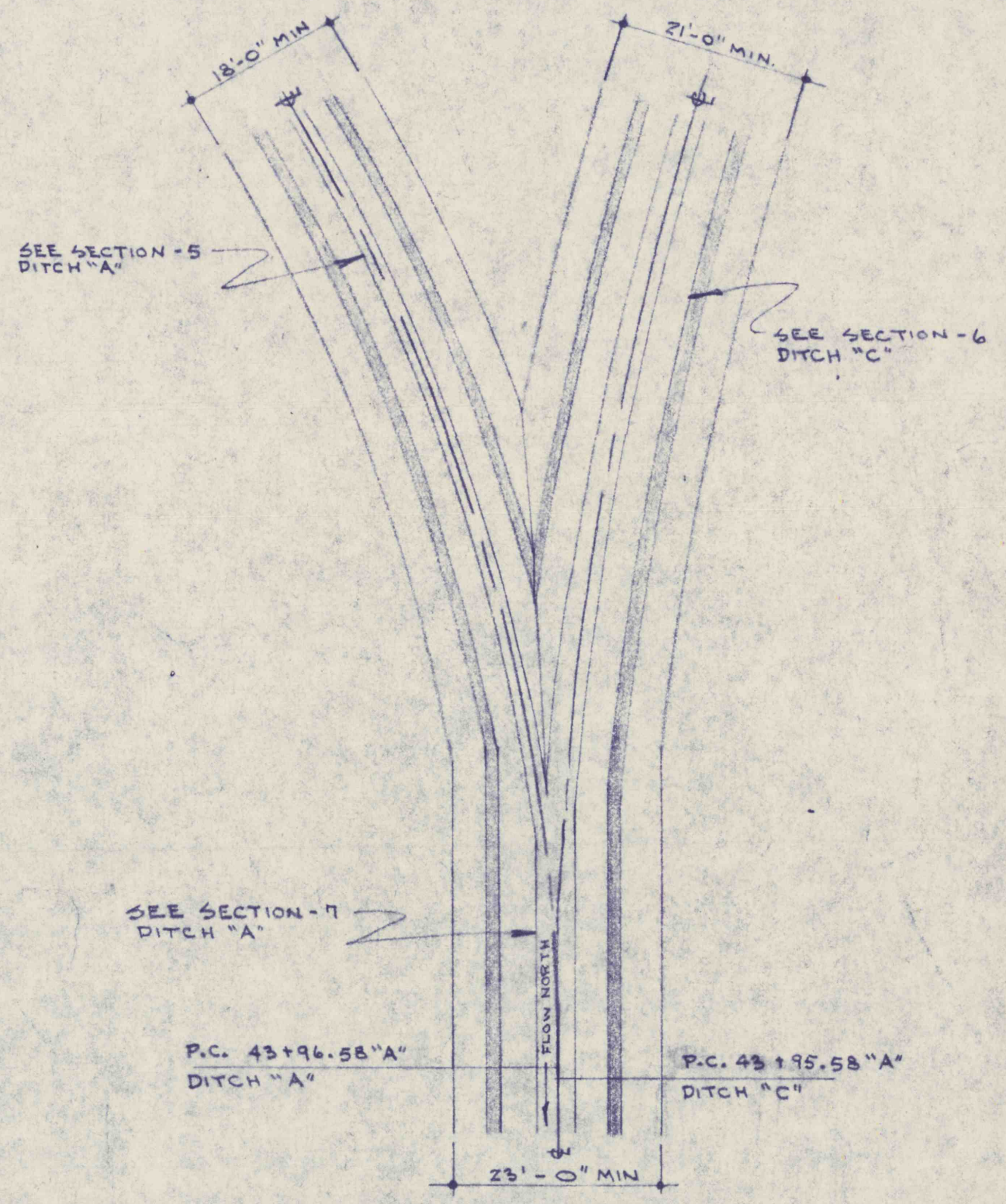
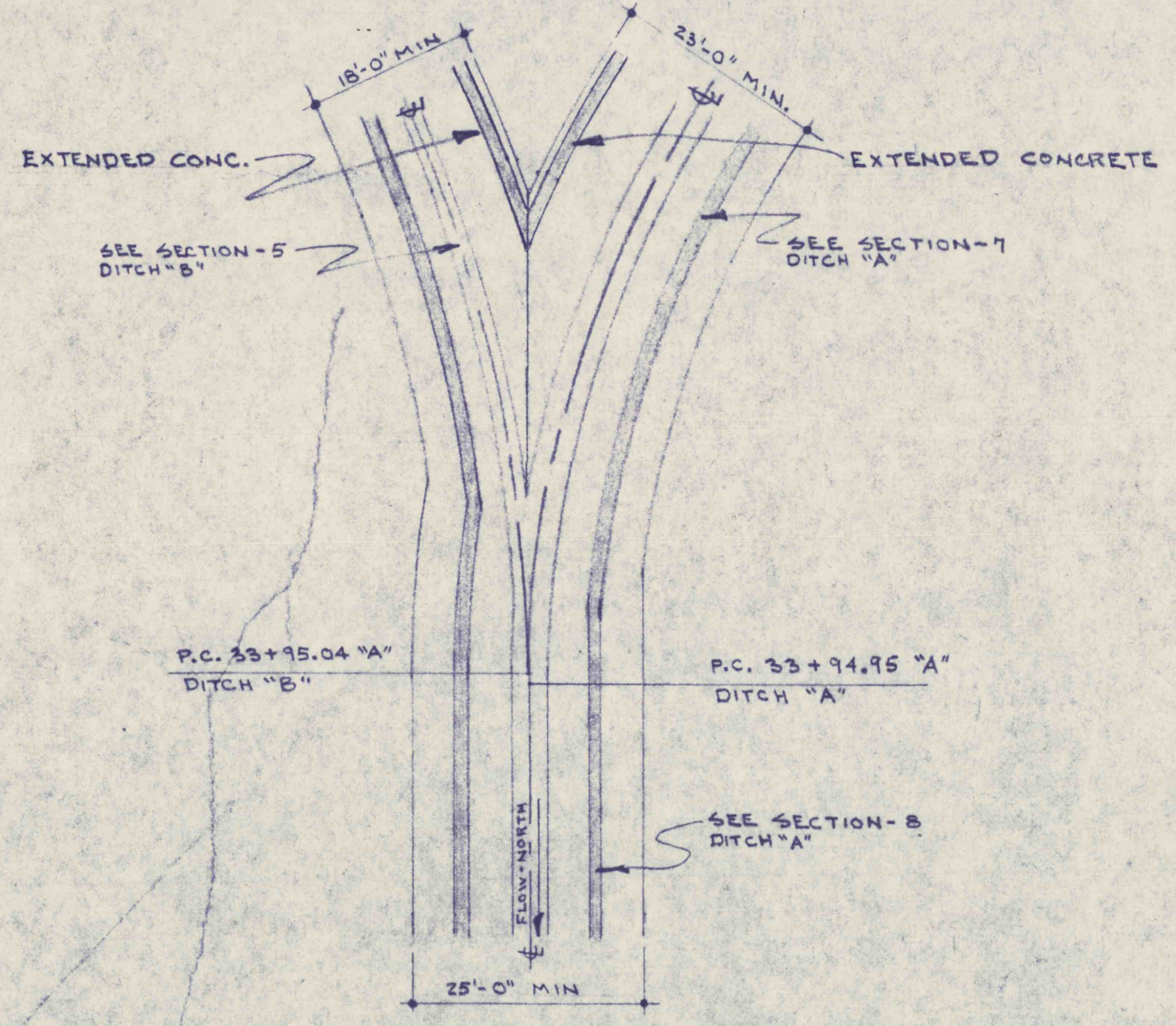


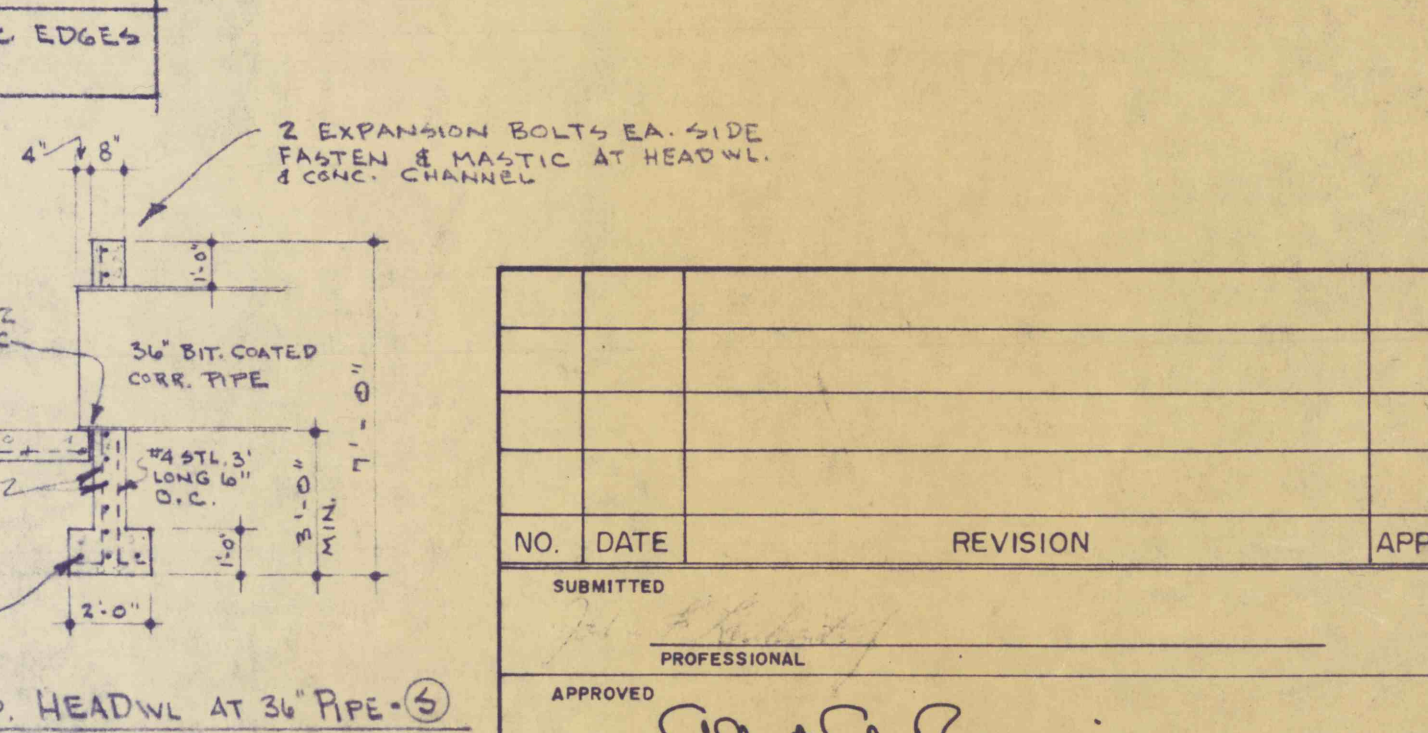
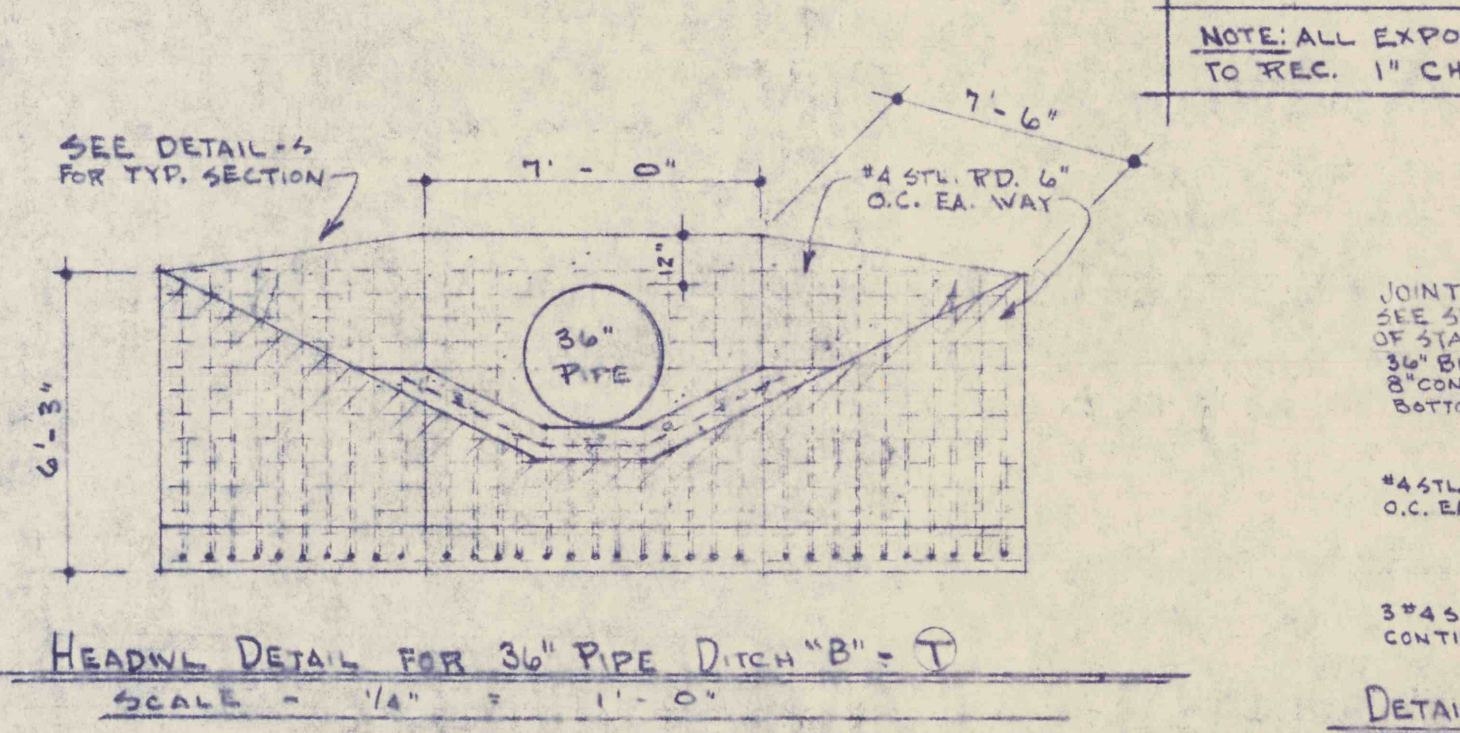
DETAIL OF EXISTING CULVERT AT PAVED ACCESS RD. ON DITCH - A - (H)
SCALE - 1/16" = 1' - 0"

DETAIL OF EXISTING CULVERT ON ROUTE #901 (DITCH - A) - (I)
SCALE - 1/16" = 1' - 0"

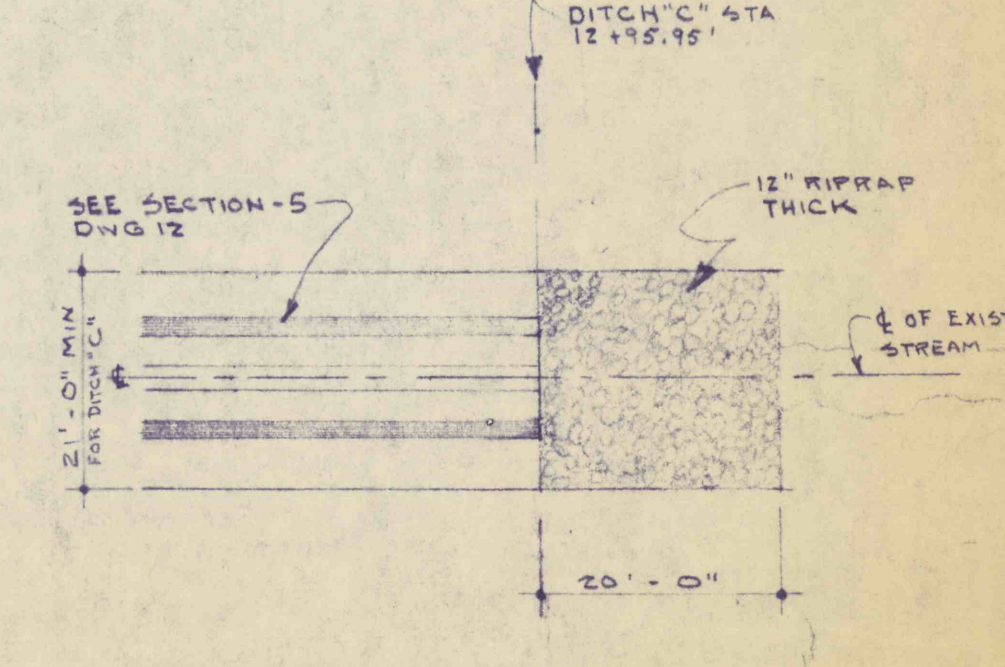
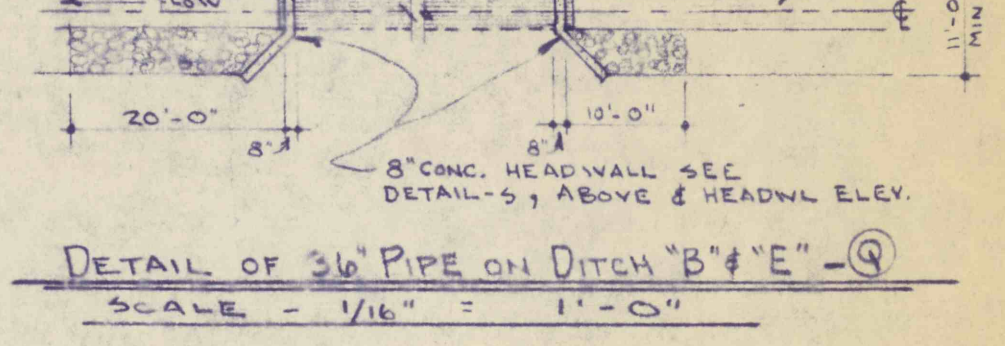
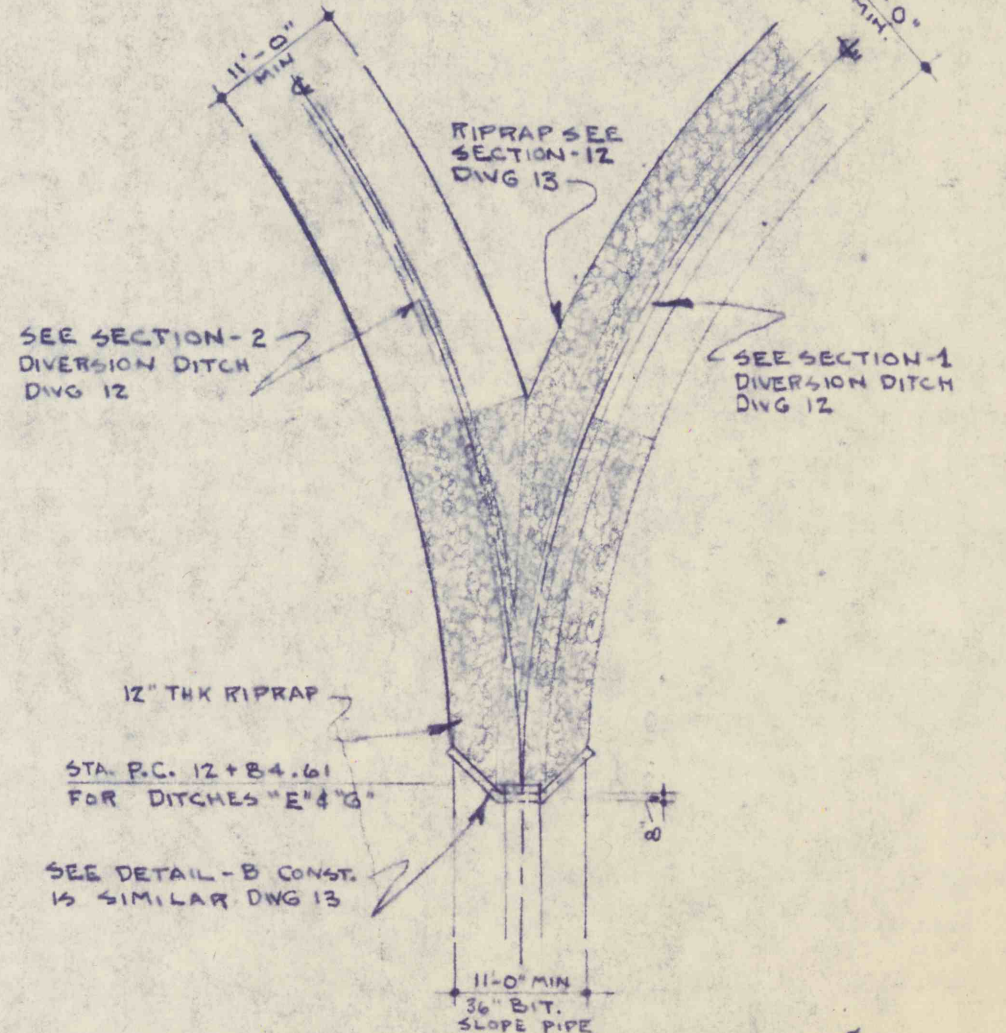
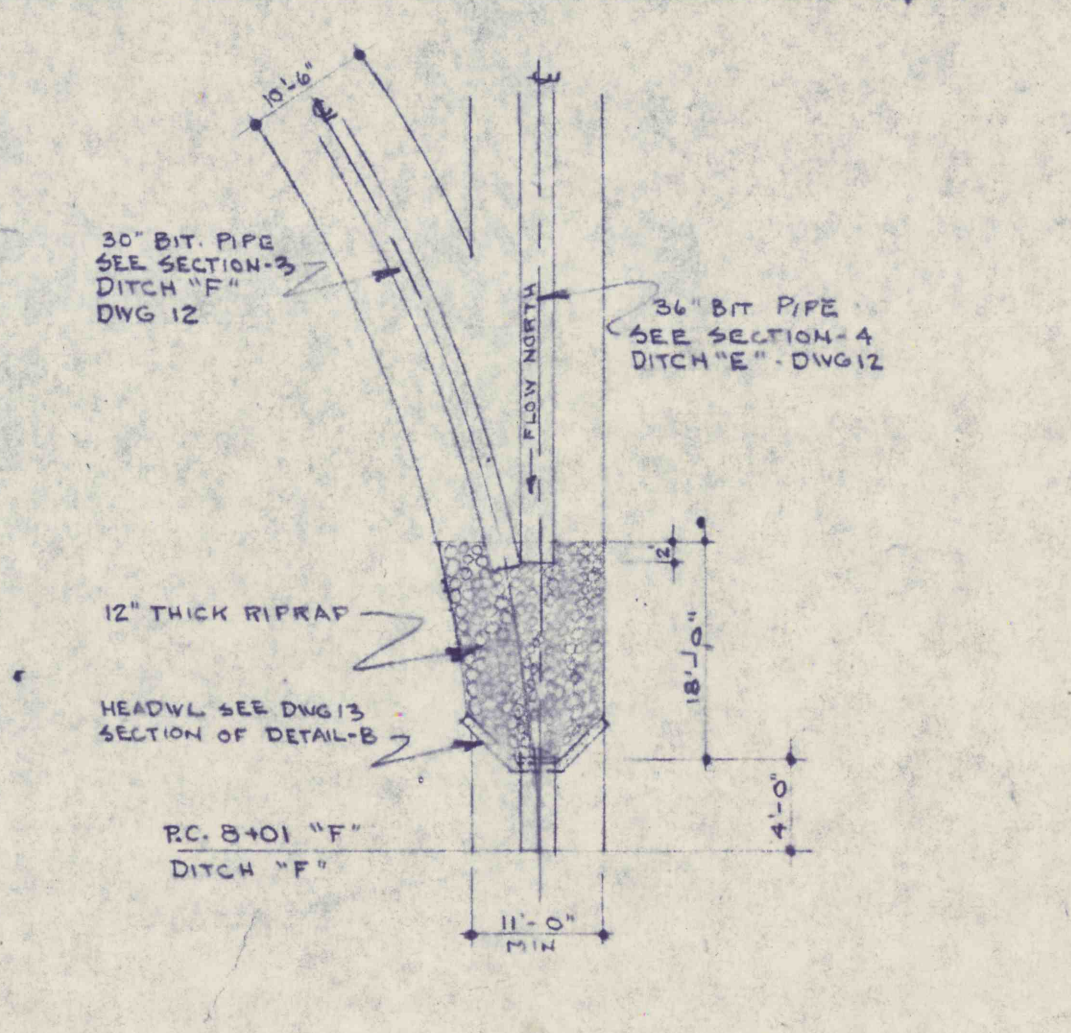
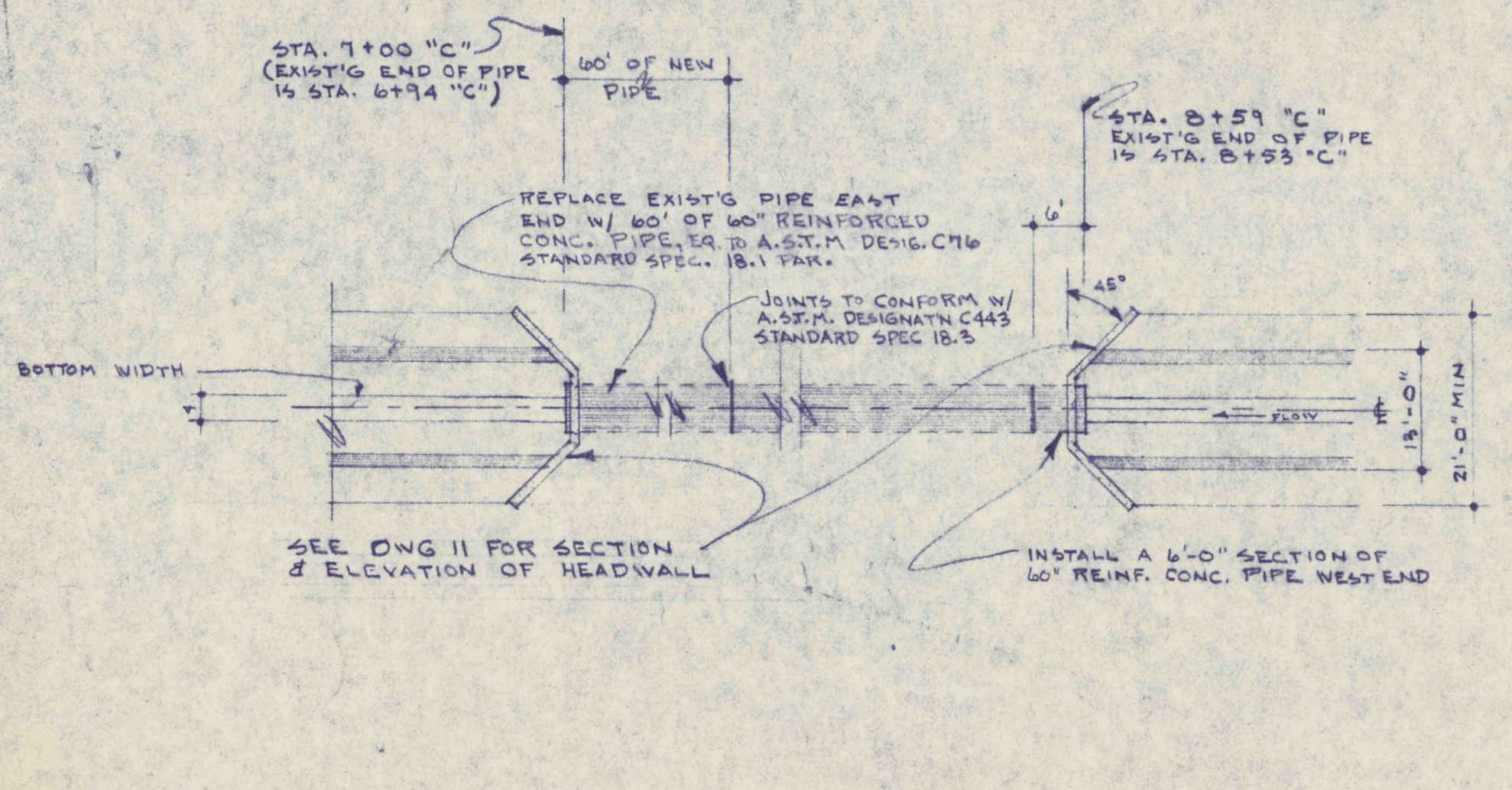
ELEVATION OF EXIST'G CULVERT RT 901 DETAIL - I
SCALE - 1/4" = 1' - 0"



DETAIL OF CONNECTION DITCHES "A" & "B" - (J)
SCALE - 1/16" = 1' - 0"



DETAIL OF CONNECTION DITCH "A" WITH DITCH "C" - (K)
SCALE - 1/16" = 1' - 0"



DETAIL OF 60" PIPE ON DITCH "C" - (N)
SCALE - 1/16" = 1' - 0"

DETAIL OF CONN. DITCH "E" W/ "F" - (O)
SCALE - 1/16" = 1' - 0"

DETAIL OF CONN. DITCHES "E" & "G" - (P)
SCALE - 1/16" = 1' - 0"

DETAIL AT END OF DITCH "C" - (R)
SCALE - 1/16" = 1' - 0"

NO.	DATE	REVISION	APPR.

COMMONWEALTH OF PENNSYLVANIA
DEPARTMENT OF ENVIRONMENTAL RESOURCES
OFFICE OF RESOURCES MANAGEMENT

PROJECT NO. SL 113-2

MINE DRAINAGE POLLUTION ABATEMENT
QUICK STARTS E, F, G, H, I, J, K, L, M, N, O, P, Q, R

SHAMOKIN CREEK WATERSHED

JOHN S. LUCKENS ASSOC.
P. O. Box 190 Shamokin, Penna.

DETAILS

DRAWN BY	DATE	DRAWING NO.
CHECKED BY	SCALE	14
	As Shown	