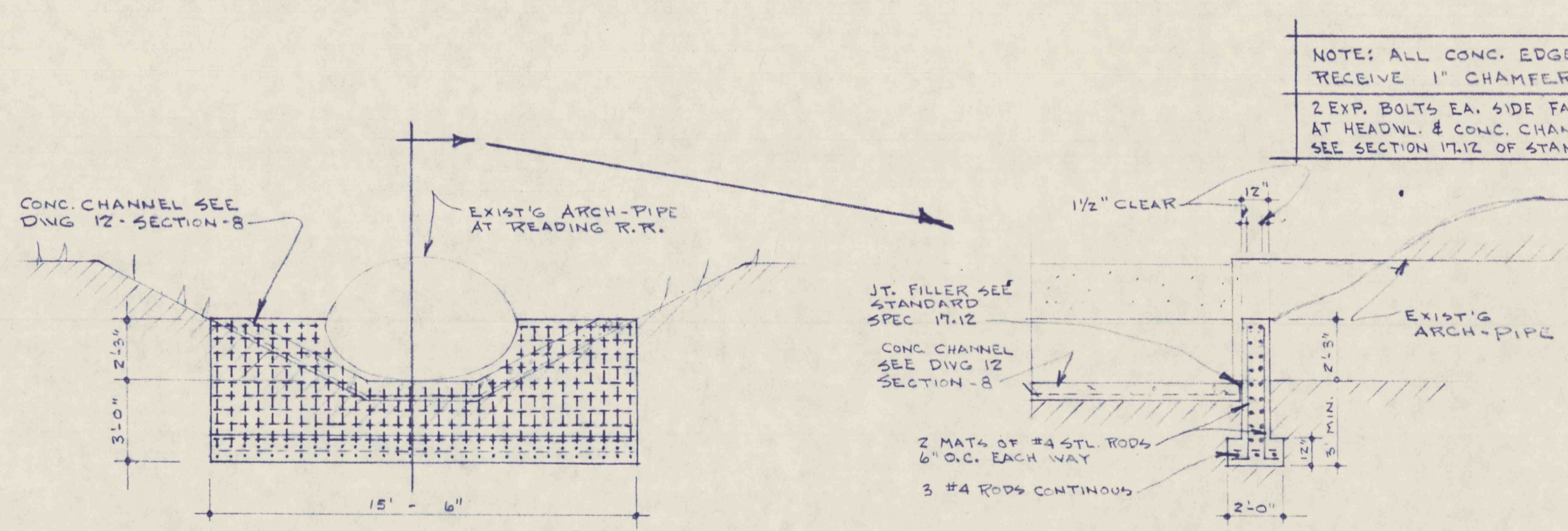
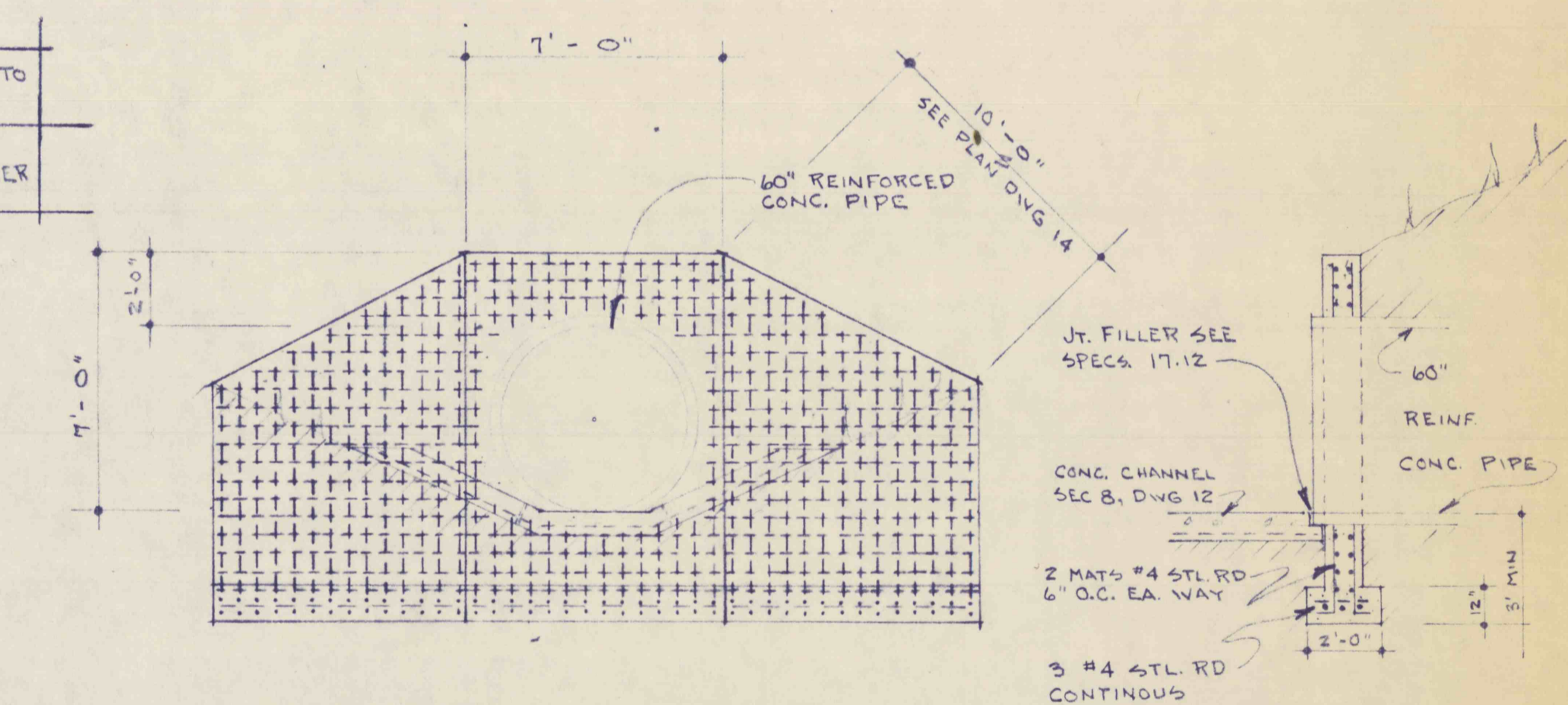


PROFILES OF DITCH E, F & G
SCALE, HORIZONTAL - 1" = 50' VERTICAL - 1" = 10'



ELEVATION NORTH END OF CULVERT
TYPICAL CROSS-SECTION OF CULVERT
ELEVATION & SECTION OF ARCH-PIPE AT READING R.R. DETAIL-G, SHEET 13
SCALE - 1/4" = 1' - 0"



ELEVATION
SECTION
ELEV. & SEC. OF 60" REINF'D CONC. PIPE DITCH "C"; DETAIL-N, DWG 14
SCALE - 1/4" = 1' - 0"

NO.	DATE	REVISION	APPR.
SUBMITTED			
PROFESSIONAL			
APPROVED <i>Albert A. Ranieri</i> CHIEF - DIVISION OF MINE RECLAMATION			
APPROVED <i>Jim Penney</i> DIRECTOR - BUREAU OF DESIGN			
COMMONWEALTH OF PENNSYLVANIA DEPARTMENT OF ENVIRONMENTAL RESOURCES OFFICE OF RESOURCES MANAGEMENT			
PROJECT NO. SL 113-2			
MINE DRAINAGE POLLUTION ABATEMENT QUICK STARTS E, F and G SHAMOKIN CREEK WATERSHED			
JOHN S. LUCKENS ASSOC. P. O. Box 190 Shamokin, Penna.			
PROFILES OF DITCH E, F & G			
DRAWN BY	DATE	DRAWING NO.	
CHECKED BY	SCALE	As Shown	
		11 of 14	