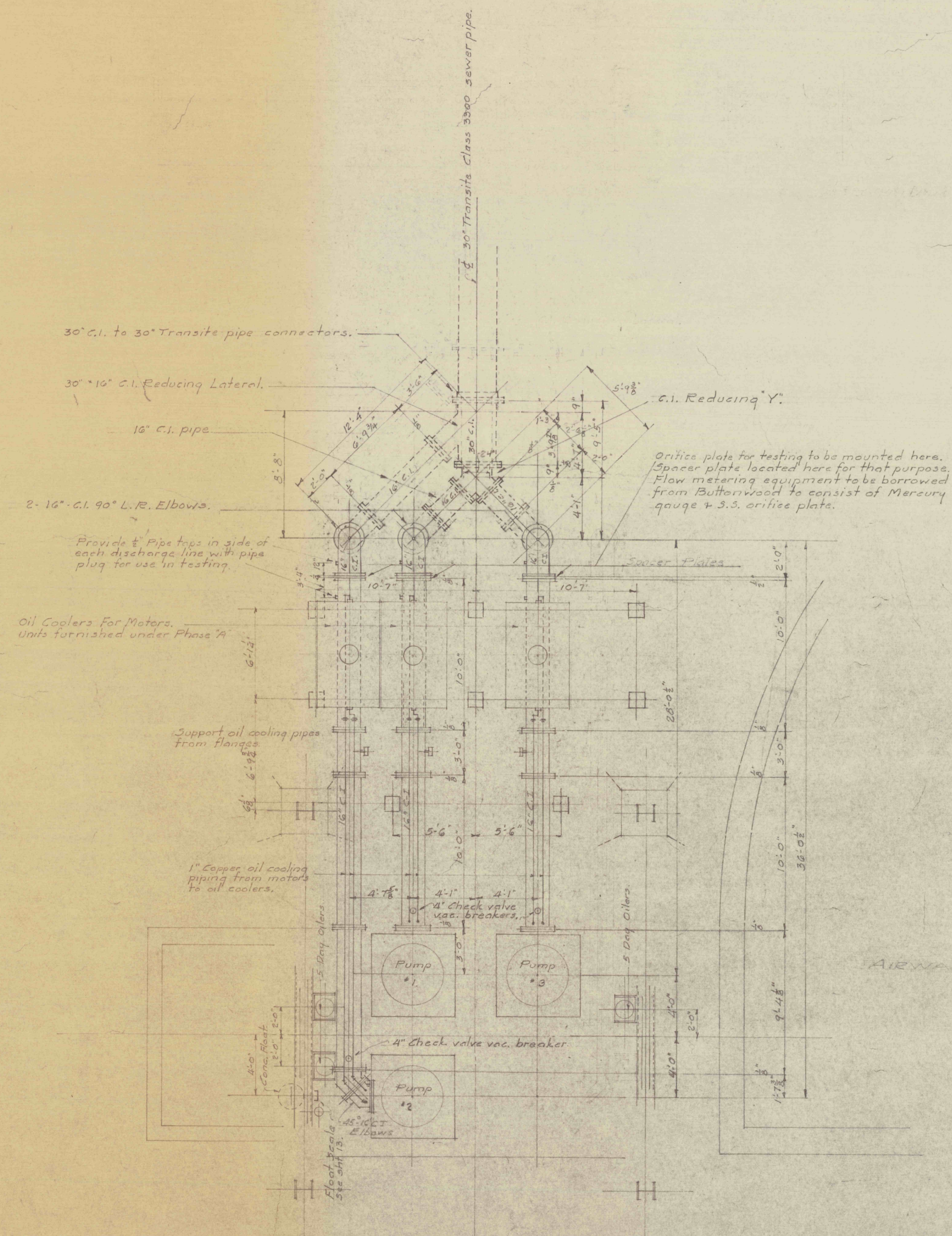
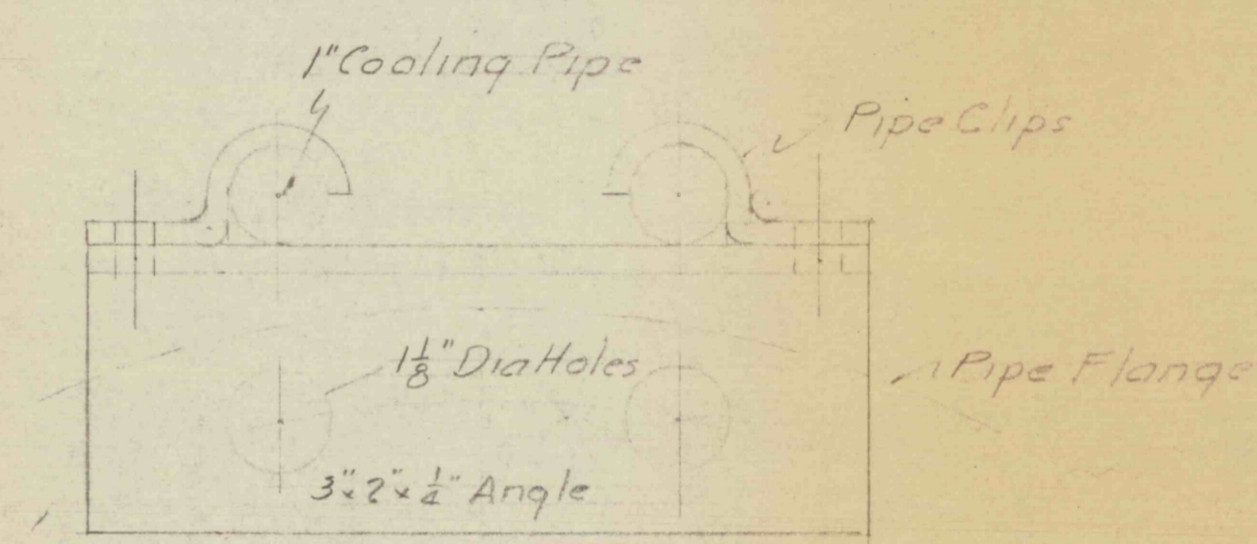


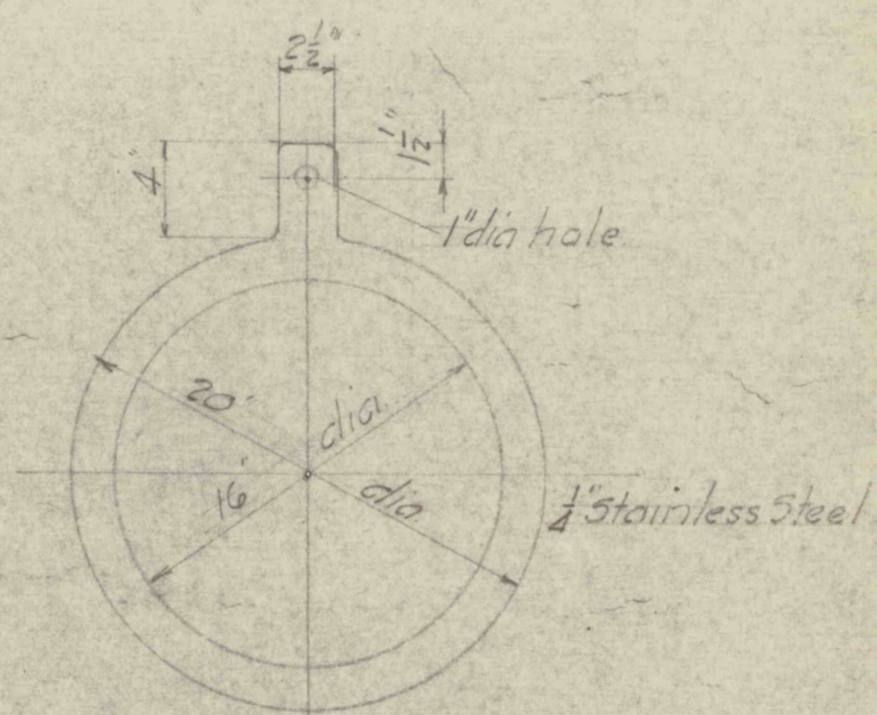
SECTION G-C THRU PIPE RUNWAY - See Sheet #2



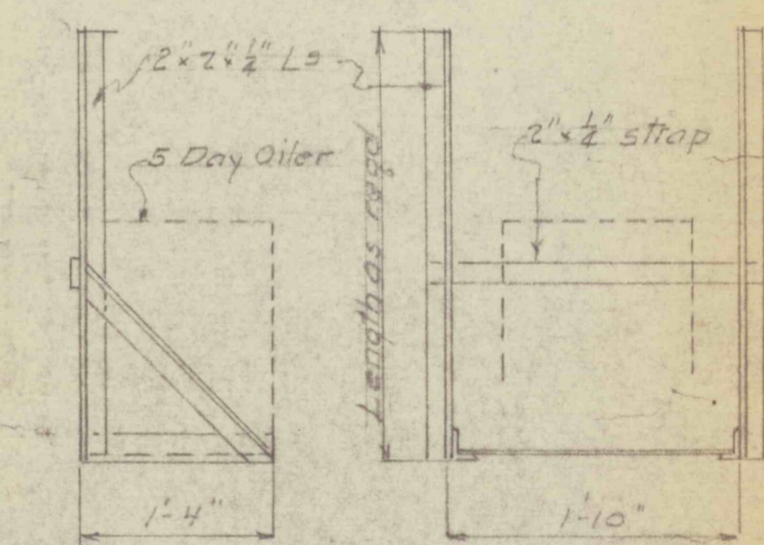
PLAN SHOWING PIPING FROM PUMPS. SECT. A.



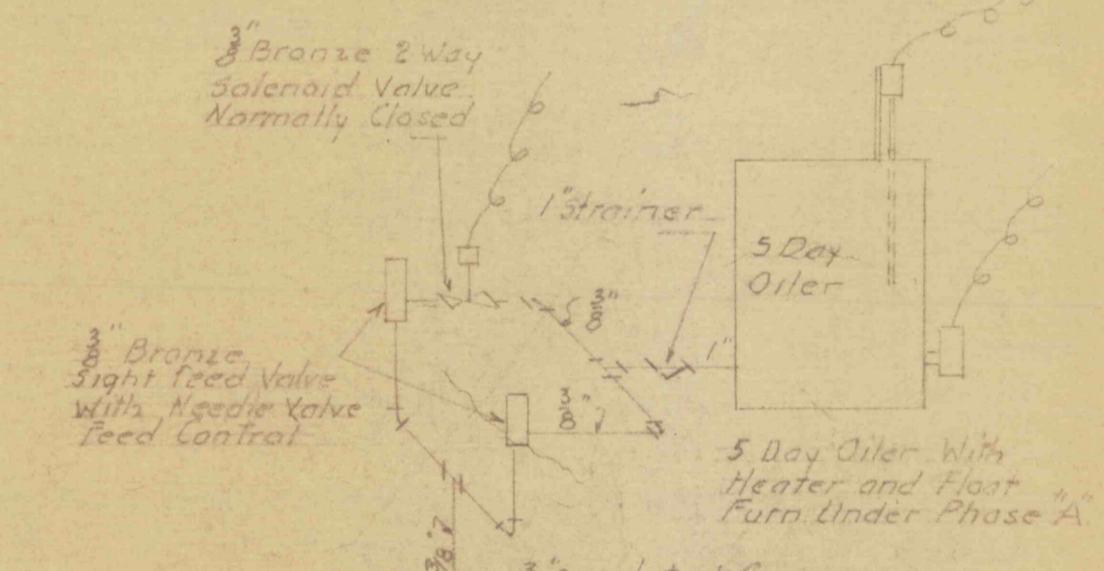
1 1/2" DETAIL OF COOLING PIPE SUPPORTS



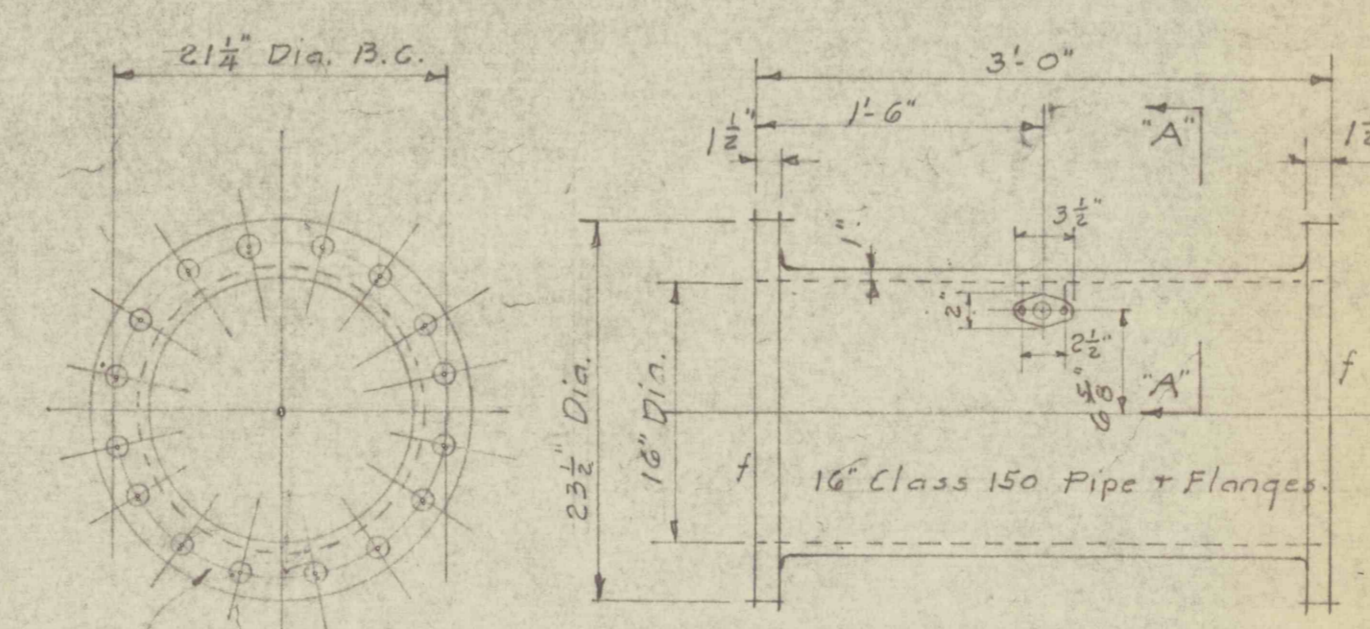
1/4" DETAIL OF SPACER PLATE 3-Reqd.



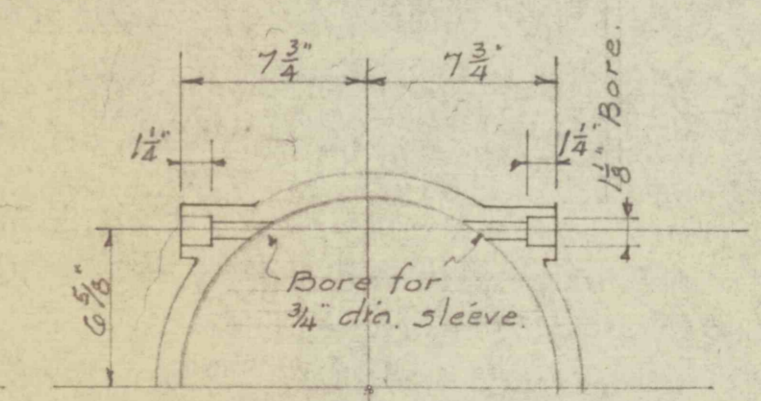
BRACKET FOR MOUNTING 5 DAY OILER 3-Reqd.



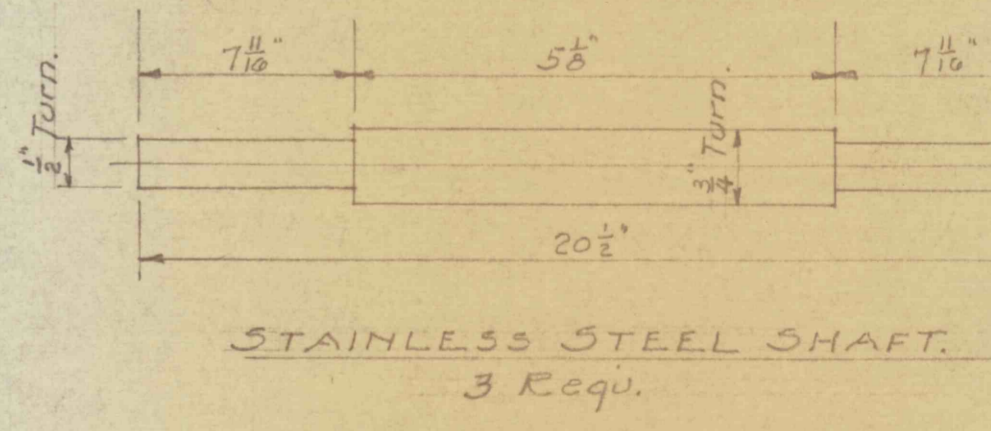
PIPING DIAGRAM FOR 5 DAY OILERS. 3-Reqd.



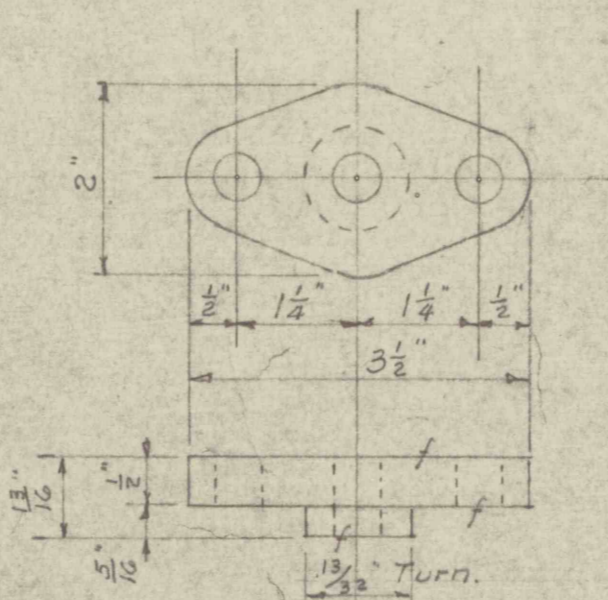
CAST IRON PIPE 3-Reqd.



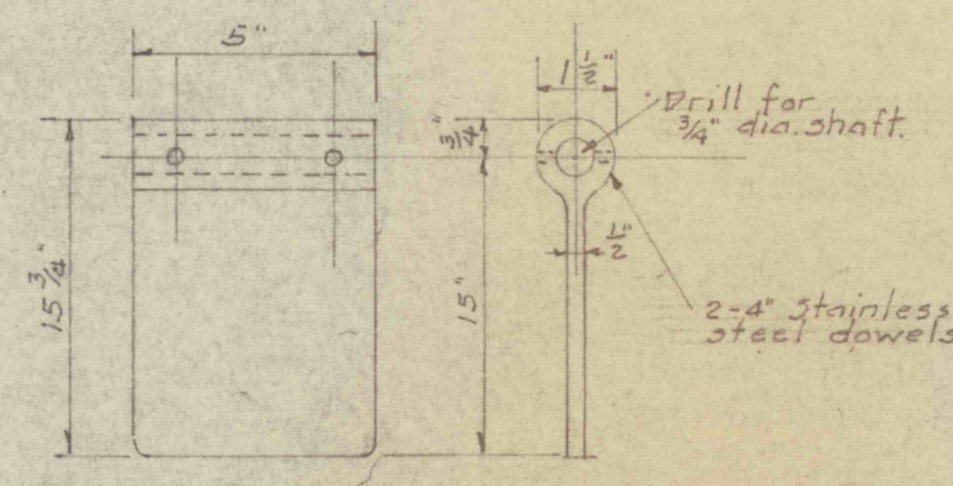
SECTION A-A No scale.



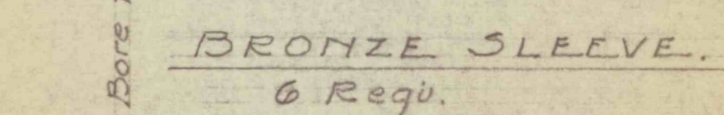
STAINLESS STEEL SHAFT. 3-Reqd.



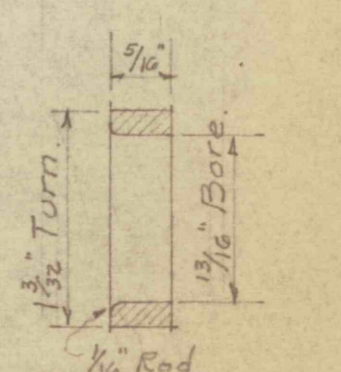
BRONZE GLAND No scale. 6-Reqd.



BRONZE FLAP No scale. 3-Reqd.



SOFT LEATHER WASHER 12-Reqd.



BRONZE SPACER 12-Reqd.

FLOW SWITCH. 4-Reqd.

DISCHARGE PIPING - SECT. A.

14 Sheets		Sheet 8	
30, WILKES BARRE #5 COLLIERY			
FLOOD CONTROL PROJ. #26 PHASE "B"			
PA. DEPT. OF MINES & MINERAL INDUSTRIES			
GLEN ALDEN CORPORATION		Wilkes-Barre, Pa.	
SCALE: As noted.		CONSTRUCTION ENGINEERS	
APPROVED	DRAWN BY: EWC 10-17-24		
Const. Engr. AUG 1915	TRACED BY:		
	CHECKED BY:		
		R1217	