

CONDUIT NO	SIZE	FROM	TO	CONDUCTOR	USE
1	4"	STARTER #1	PUMP #1	3-300M.C.H.V	MOTOR FEED
2	4"	" #2	" #2	"	"
3	4"	" #3	" #3	"	"
4	"	" #4	" #4	"	"
5	3"	" #1	" #1	2-5 #12 Cable	Old Pump #1st Pump
6	3"	" #2	" #2	"	Pump Control
7	3"	" #3	" #3	"	"
8	3"	" #4	" #4	"	"
9	1 1/2"	CONTROL SECT. LOAD CENTER	2-#4 1-#6	"	LIGHTING
10	2"	"	HOISTHOUSE	3-#2	HOIST
11	2"	"	"	2-#6 1-#8	BLDG LIGHTING
12	1"	"	TOWER	2-#12	TOWER
13	1"	"	HOISTHOUSE	"	"
14	"	"	TOWER LIGHTING	"	"
15	Bare	GROUND	GROUND	4/0	MAIN GROUND
16	3/4"	PUMPS 1-2-3-4	MAIN GROUND	1/0	GROUND
17	Bare	HOIST TOWER	"	1/0	"
18	3/4"	HOIST	"	1/0	"
19	3/4"	TRANSFORMER	"	1/0	"
20	3/4"	TOWER	"	1/0	"
21	3/4"	O.C.B.	"	1/0	"
22	3/4"	CUBICLES	"	1/0	"
23	3/4"	FENCE AND GATE POSTS	"	1/0	"

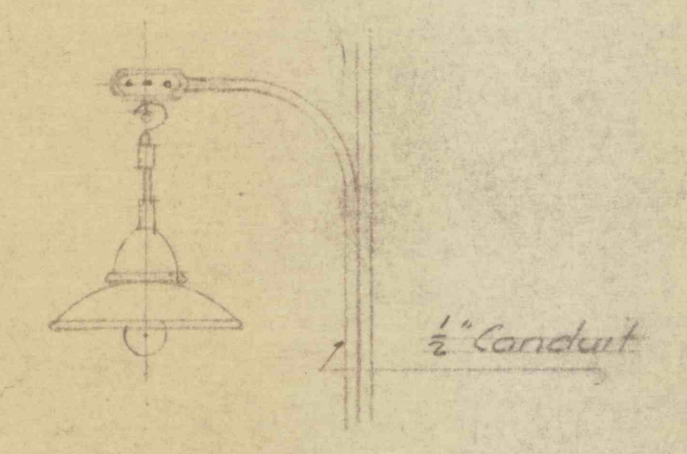
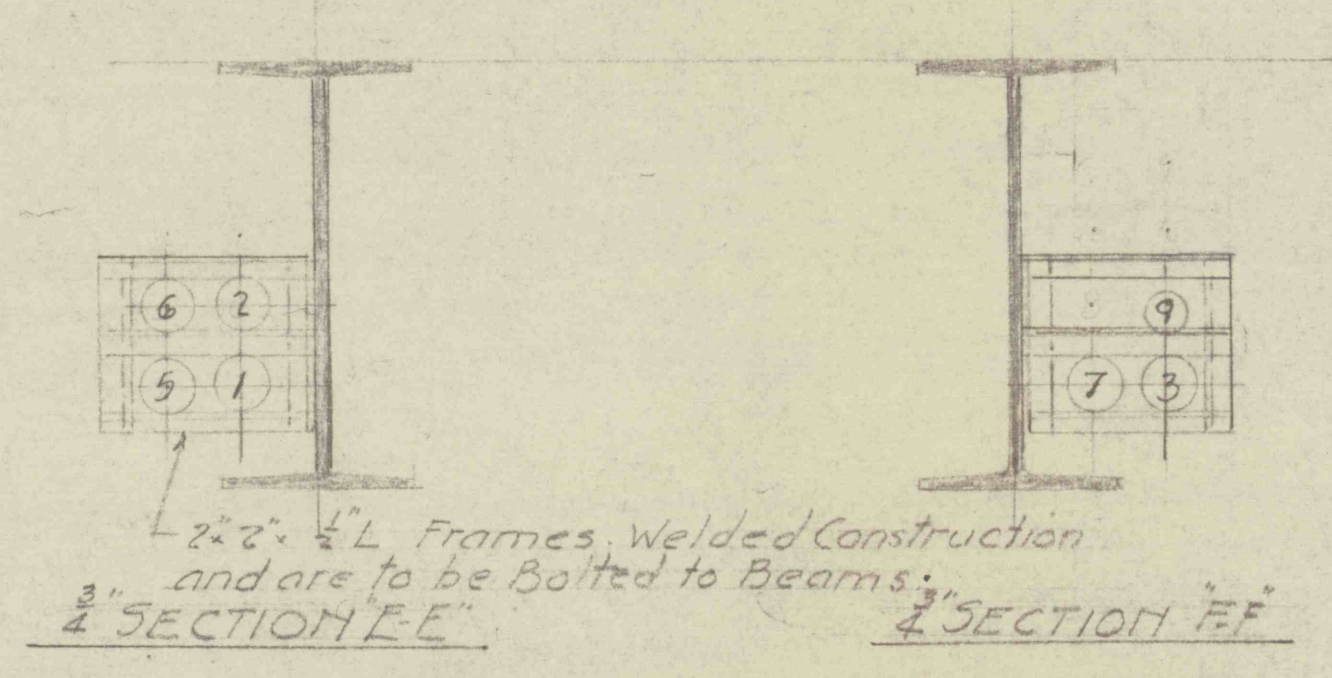
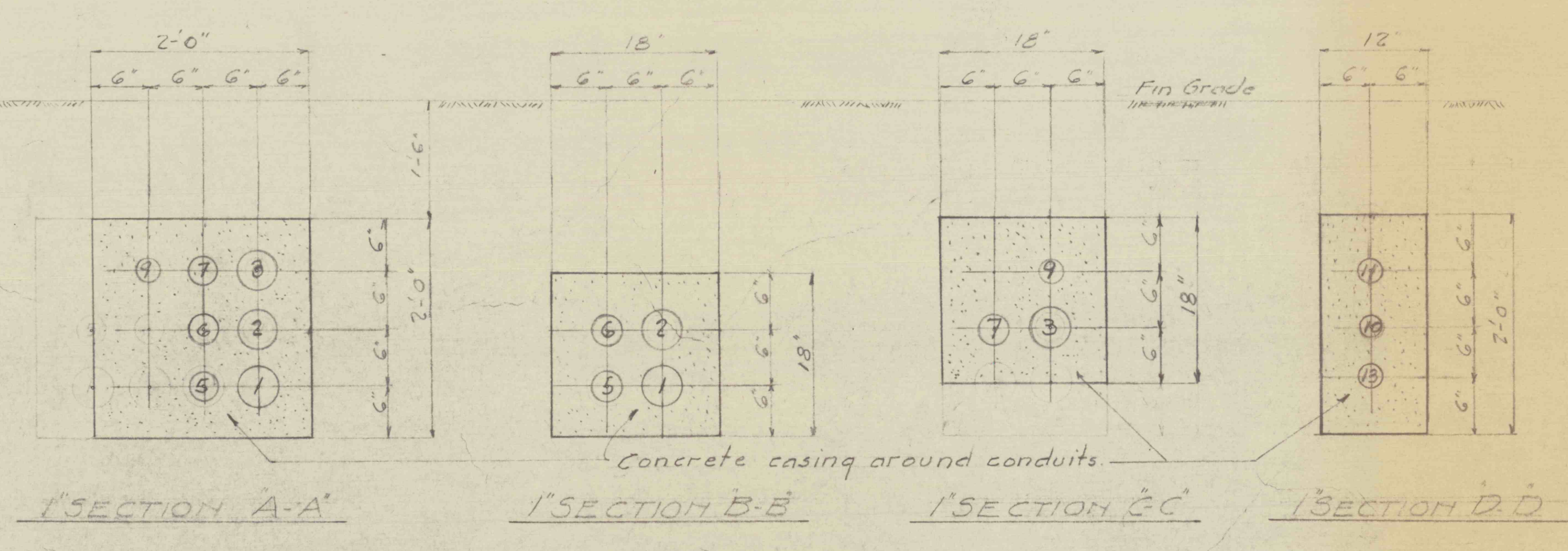
LIGHTING PANEL CIR BRKR - 100A

Main Circuit

#1 Main Floor Lighting	#2 Main Floor Lighting
#3 2nd "	#4 3rd "
#5 Top "	#6 Receptacles
#7 Spare	#8 Spare

LIGHTING PANEL HOIST HOUSE - 300A

#1- Lighting	#2- Receptacles
#3- Tower Lighting Circuit	#4- Tower Lighting Circuit
#5- Spare	#6- Spare



TYPICAL LGT FIXTURE MOUNTING.

ELECTRICAL

14 sheets Sheet 14

JO. WILKES BARRE #3 COLLIERY
FLOOD CONTROL PROJ # 16 PHASE 'B'
PA DEPT OF MINES & METALLURGICAL INDUSTRY

GLEN ALDEN CORPORATION Wilkes-Barre, Pa.
CONSTRUCTION ENGINEERS

SCALE: As noted

APPROVED	DRAWN BY J.L.B. 12-17-57
Const. Engr. C.W.C. 12/18/57	TRACED BY
	CHECKED BY

R1223