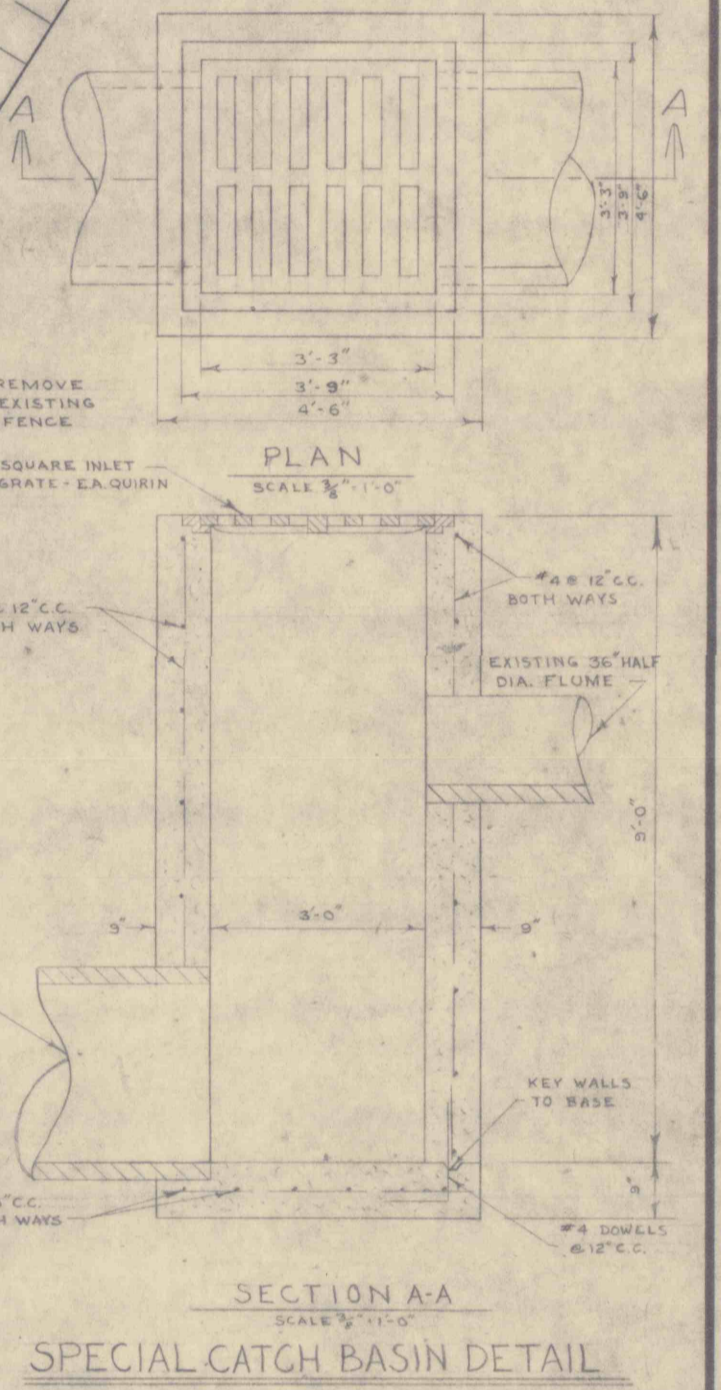
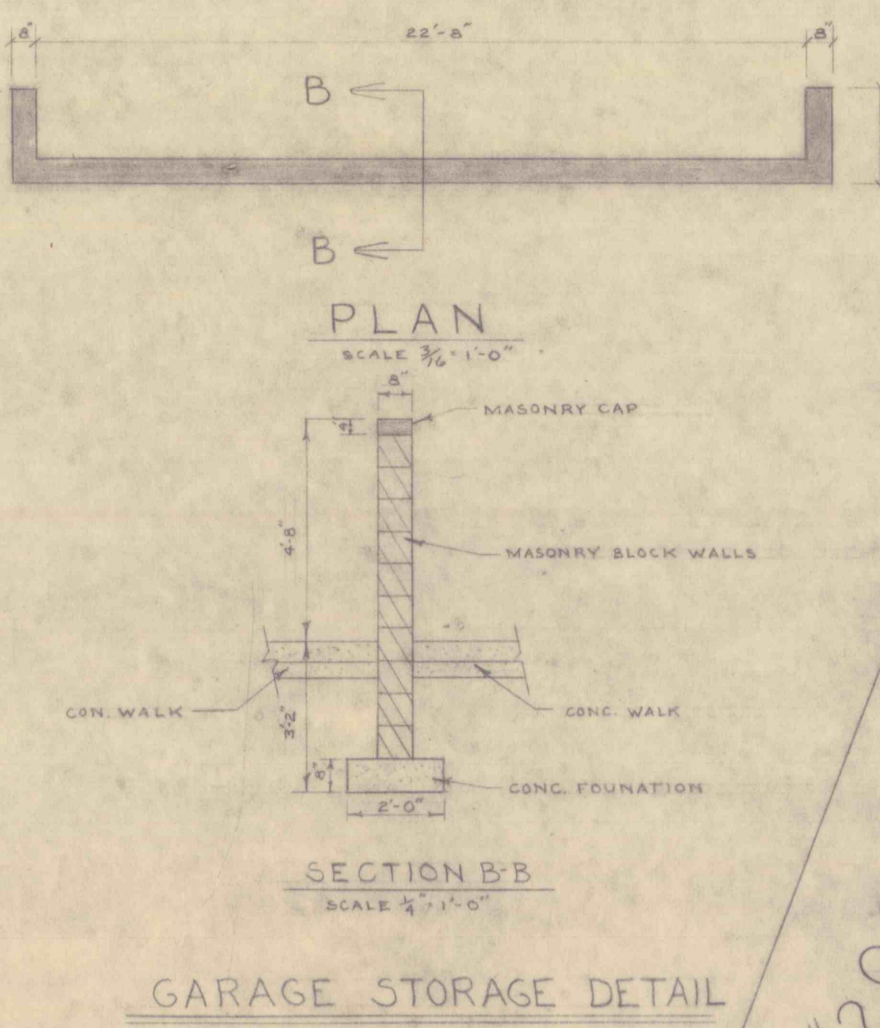


SANITARY SEWER

MH	TOP	INVERT	FROM MH	TO MH	SIZE	PIPE	LENGTH	SLOPE
1	992.00	987.00	1	2	8"	V.C.P.	300.00'	0.264
2	984.70	979.00	2	3	8"	V.C.P.	41.00'	0.243
3	979.00	974.00	3	4	8"	V.C.P.	280.00'	0.213
4	963.40	960.00	4	5	8"	V.C.P.	181.00'	0.209
5	943.80	938.00	5	6	8"	V.C.P.	208.00'	0.278
6	960.00	955.00 (2)	6	7	8"	V.C.P.	230.00'	0.256
7	947.60	942.00	7	8	8"	V.C.P.	38.00'	0.194
8	947.00	941.00						
9	955.50	949.74						
10	971.20							



LEGEND

- EXISTING CONTOURS
 - FINISH GRADE
 - PROPERTY LINE
 - EXISTING FENCE
 - EXISTING R.R. AND/OR TELEPHONE
 - EXISTING T.E.L. AND/OR TELEPHONE TO BE REMOVED
 - EXISTING TELEPHONE AND ELECTRICAL LINES
 - EXISTING ELECTRICAL LINE
- SANITARY SEWER SYSTEM**
- EXISTING MANHOLE TO REMAIN
 - NEW MANHOLE
 - EXISTING SANITARY LINE
 - NEW SANITARY LINE
 - NEW SANITARY LATERALS
- STORM SEWER SYSTEM**
- NEW CATCH BASIN
 - NEW STORM MANHOLE WITH GRATE INLET
 - NEW STORM LINE
- WATER DISTRIBUTION SYSTEM**
- EXISTING WATER LINE
 - NEW WATER LINE
 - NEW GATE VALVE
 - NEW FIRE HYDRANT
 - NEW WATER CONNECTIONS TO UNITS

STORM SEWER

MH OR C.B.	TOP	INVERT	FROM MH OR C.B.	TO MH OR C.B.	SIZE	PIPE	LENGTH	SLOPE
C.B. 1	982.00	975.20	C.B. 1	M.H. 2	36"	R.C.C.	190.00'	0.211 F/FT
M.H. 2	971.37	960.00	M.H. 2	M.H. 3	36"	R.C.C.	181.00'	0.193 F/FT
M.H. 3	961.80	957.00	M.H. 3	C.B. 1	36"	R.C.C.	206.00'	0.239 F/FT
C.B. 1	960.00	950.00	C.B. 1	C.B. 2	18"	R.C.C.	180.00'	0.102 F/FT
C.B. 2	960.00	950.00	C.B. 2	C.B. 3	18"	R.C.C.	100.00'	0.106 F/FT
C.B. 3	960.00	950.00	C.B. 3	M.H. 4	18"	R.C.C.	77.00'	0.146 F/FT
C.B. 4	960.00	950.00	C.B. 4	C.B. 5	18"	R.C.C.	75.00'	0.215 F/FT
C.B. 5	960.00	950.00	C.B. 5	M.H. 5	18"	R.C.C.	128.00'	0.200 F/FT
C.B. 6	971.43	963.78	C.B. 6	C.B. 7	18"	R.C.C.	75.00'	0.215 F/FT
C.B. 7	971.43	963.78	C.B. 7	M.H. 6	18"	R.C.C.	248.00'	0.231 F/FT
C.B. 8	971.43	963.78	C.B. 8	C.B. 9	18"	R.C.C.	52.00'	0.241 F/FT
M.H. 6	956.06	951.86						
C.B. 2	964.00	960.00						

CURVE DATA

STA. 0+00.00	PI. 1' = 73.0'
STA. 1' = 73.0'	PI. 2' = 214.79'
STA. 2' = 214.79'	PI. 3' = 214.79'
STA. 3' = 214.79'	PI. 4' = 141.75'

REVISIONS

SITE AND GRADING PLAN

LOW RENT HOUSING - 24 FAMILY - 24 ELDERLY
PROJECT NO. 16-2

SCHUYLKILL COUNTY HOUSING AUTHORITY
BOROUGH OF COALDALE, PENNA.

MILLER - WHITBY - NELSON
Architects and Engineers
POTTSVILLE PENNSYLVANIA TAMAGUA

JOB NO. 45-6664
DATE: 1-27-67
SCALE: 1" = 20'
DRAWN: EGM.
APPROVED: J.J.L.

DRAWING NO. **C-2**

