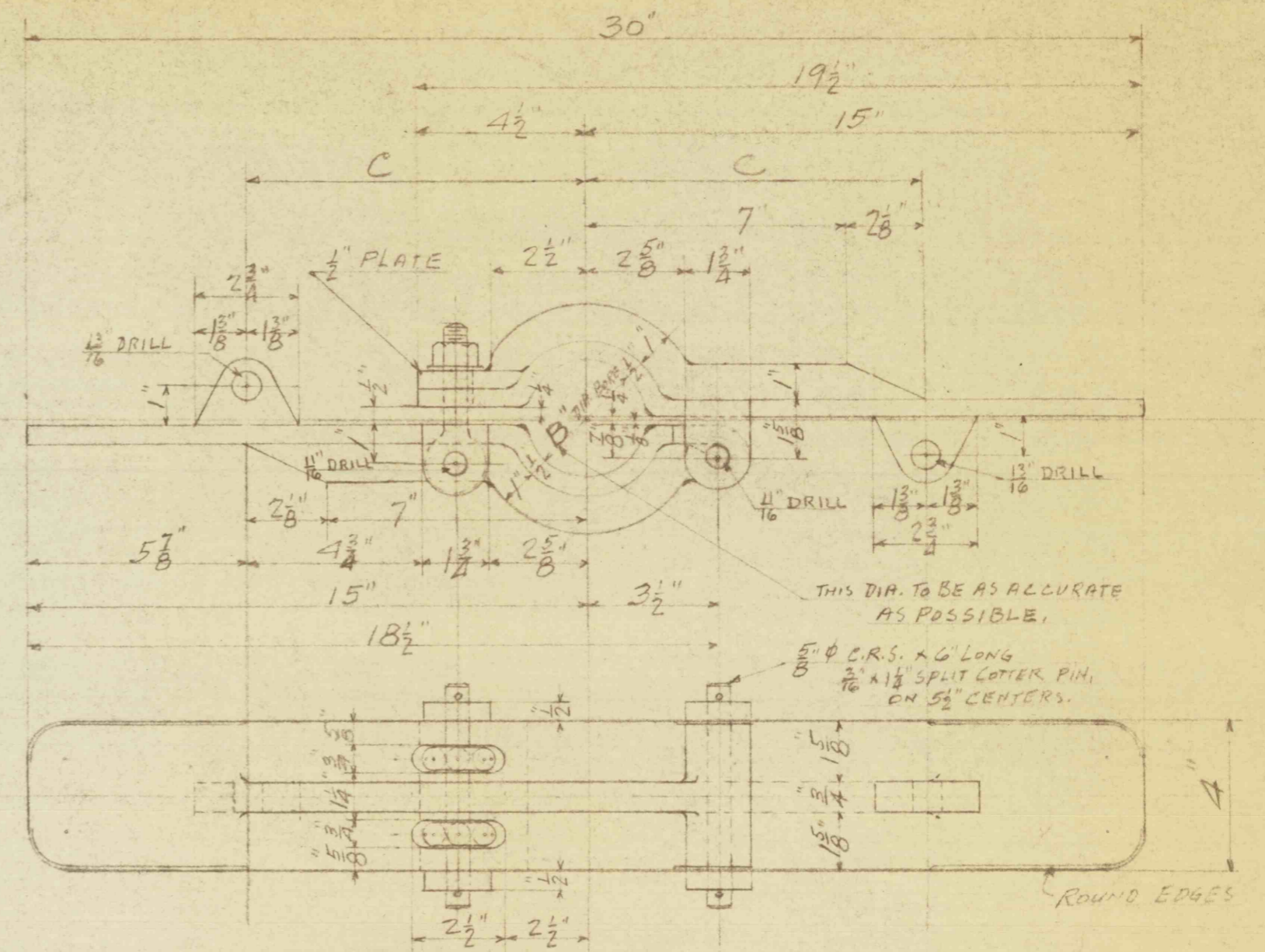
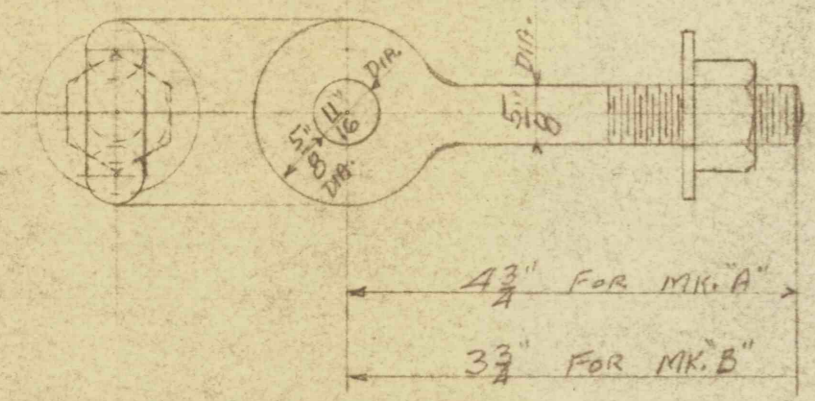


CLAMP FOR OIL TUBE, ITEM #1.



CLAMP FOR DRIVE SHAFT, ITEM #2.



2- EYE BOLTS FOR ITEM #1, MK. A.
 2- EYE BOLTS FOR ITEM #2, MK. B.

	GREENWOOD	TAMAQUA
A	5.563 O.D.	5.563 O.D.
B	3 7/16 DIA.	3 3/16 DIA.
C	8 1/4	9 1/8

LEHIGH COAL & NAVIGATION CO.,
 TAMAQUA #14 & GREENWOOD #10 SHAFTS.
 DRIVE SHAFT & OIL TUBE CLAMPS.
 DATE: MAY 3, 1956. DRAWN BY: FTREPP.

S-3127.