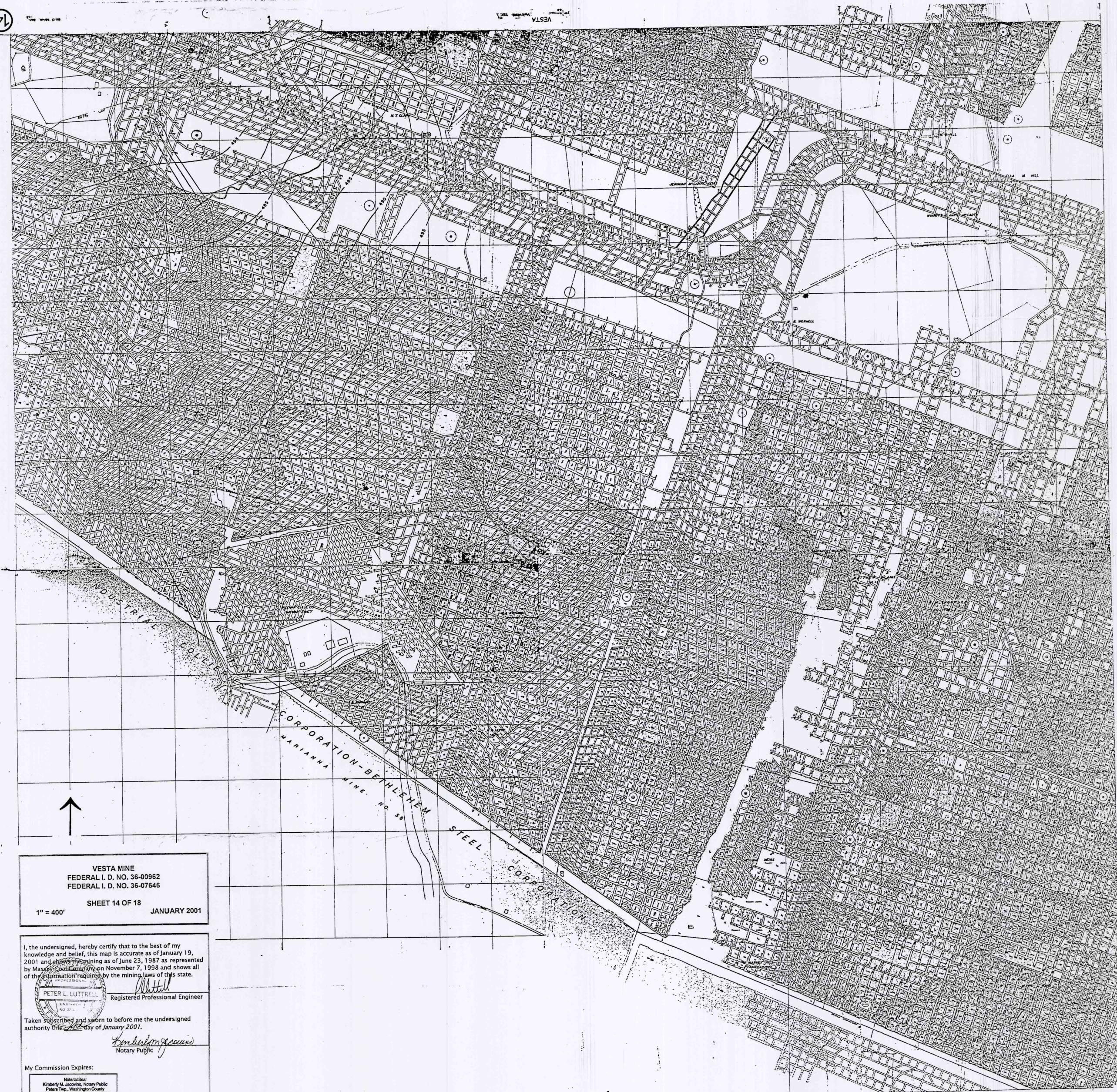


COPIED
MAY 17 2001

13



COPY

VESTA MINE
FEDERAL I. D. NO. 36-00962
FEDERAL I. D. NO. 36-07646
SHEET 14 OF 18
1" = 400' JANUARY 2001

I, the undersigned, hereby certify that to the best of my knowledge and belief, this map is accurate as of January 19, 2001 and shows the mining as of June 23, 1987 as represented by Mass. Coal Commission on November 7, 1998 and shows all of the information required by the mining laws of this state.

PETER L. LUTTRE
Registered Professional Engineer

Taken subscribed and sworn to before me the undersigned authority this 12th day of January 2001.

Notary Public

My Commission Expires:

Notary Seal
Kirkpatrick M. Jacobs, Notary Public
Potomac Two, Washington County
My Commission Expires Aug. 28, 2004
Member, Maryland Association of Notaries

14