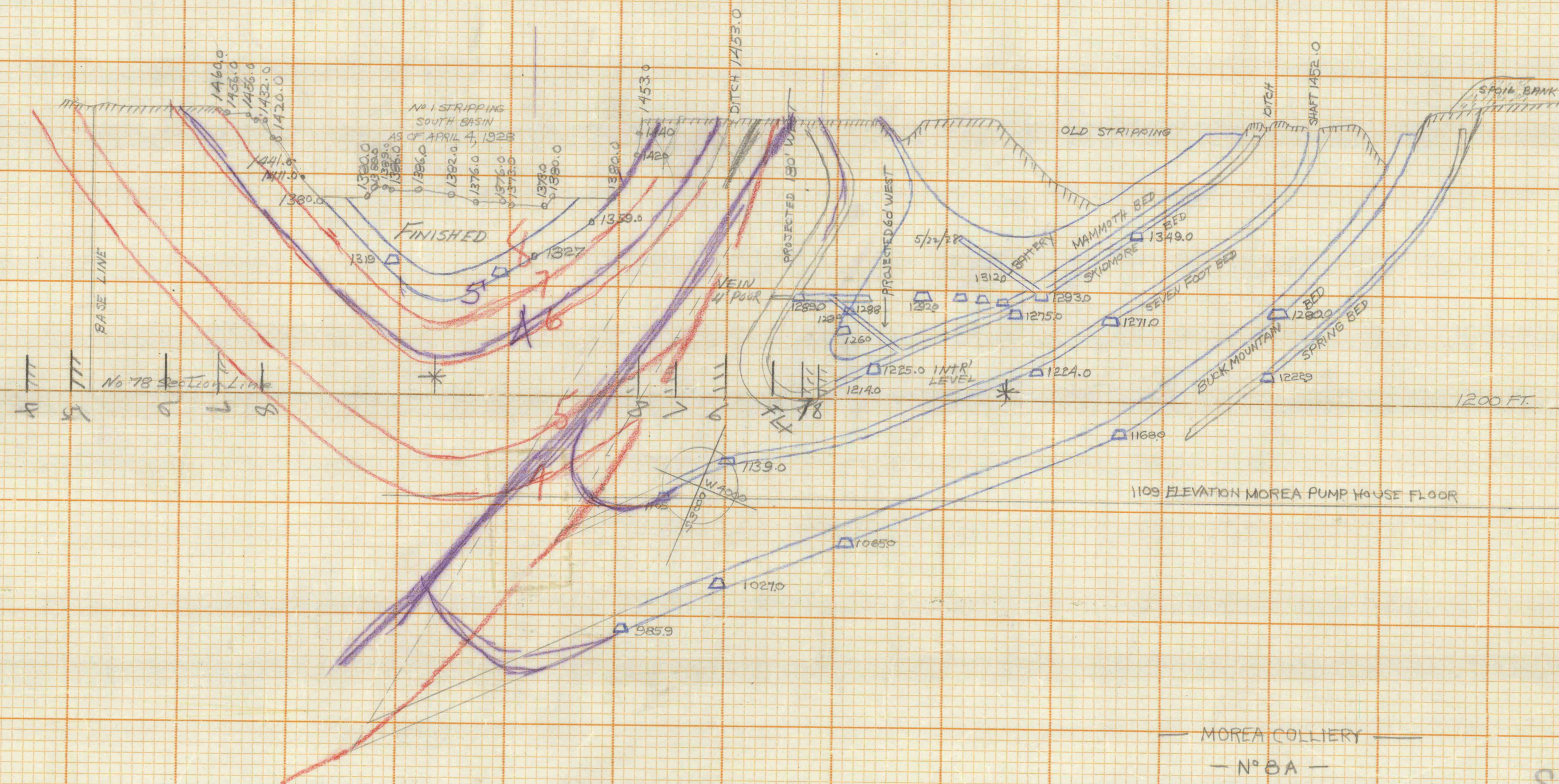


S

N



MAP X-75

TUBE #1

REV

MAP X-75

TUBE #1

"PERFECT" CROSS SECTION
10 X 10 = ONE INCH
EUGENE DIETZGEN CO.

PRINTED IN U.S.A.
ON 100% RAG PAPER MADE IN U.S.A.

MOREA COLLIERY

N° 8 A

Through No 78 Section Line No 1 Stripping
Also through No 37 Bore in The First West Buck Mountain S. D.

1" = 100'

May 18 - 1928

"PERFECT" CROSS SECTION
10 X 10 = ONE INCH
EUGENE DIETZGEN CO.