

# GENERAL MAP

Showing Properties of

## JOHN C. MARTIN

MARTIN COAL CO  
 MARTINDALE WATER CO  
 MARTIN REALTY CO

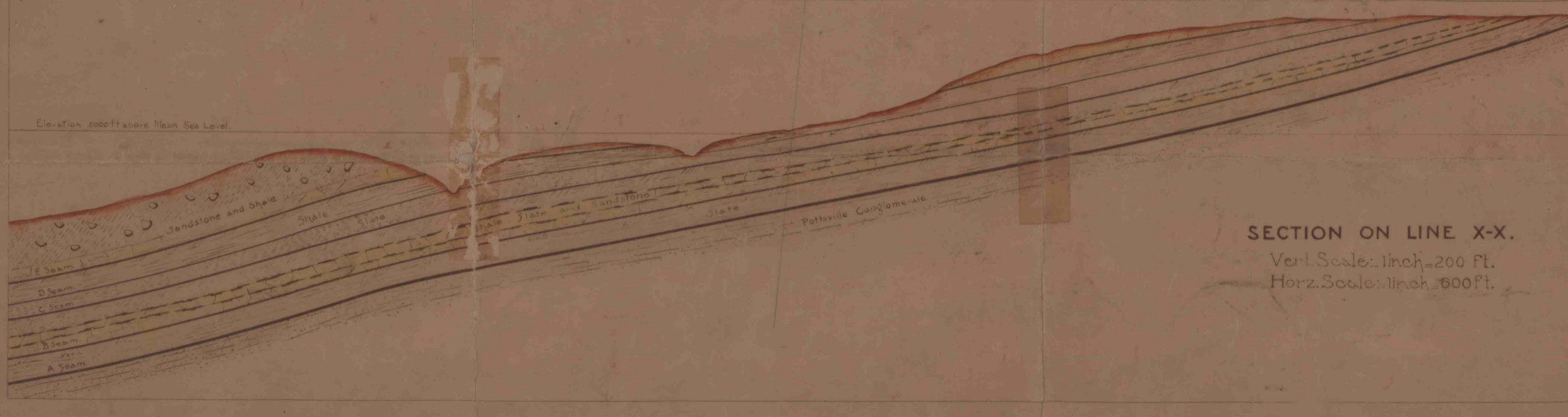
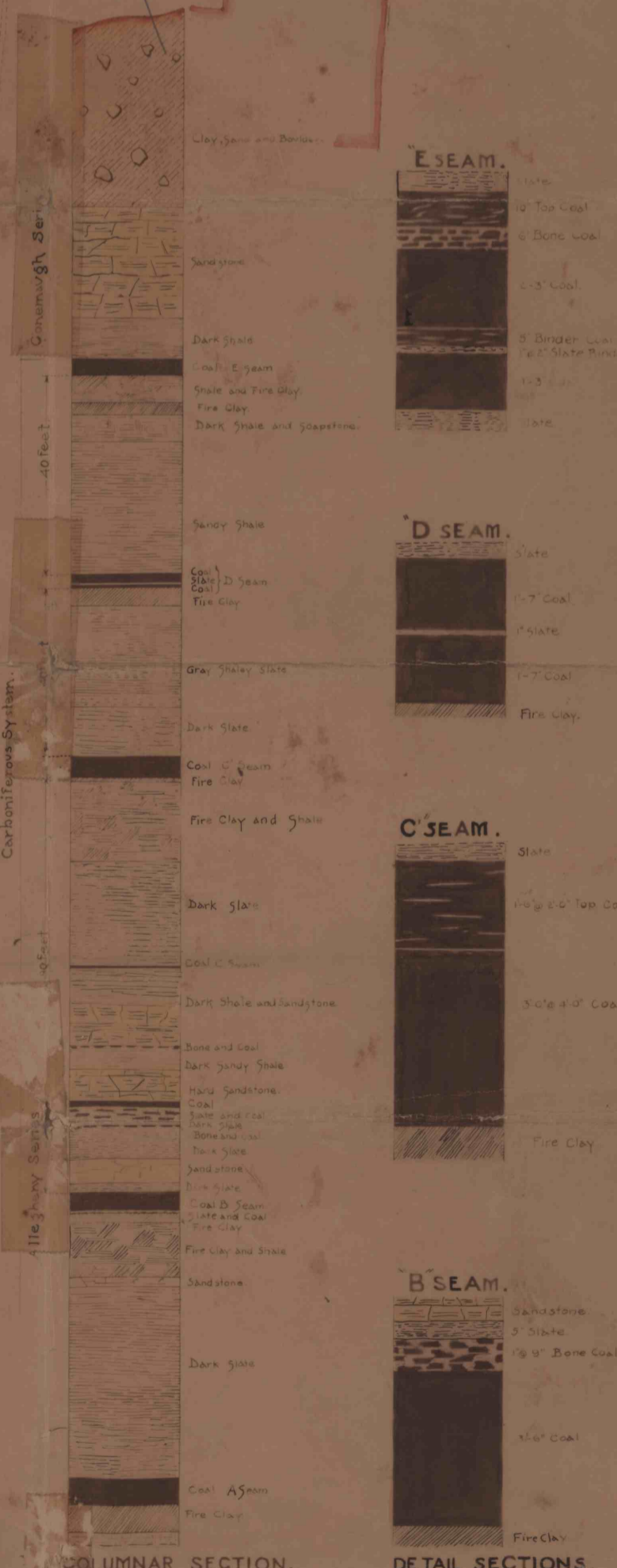
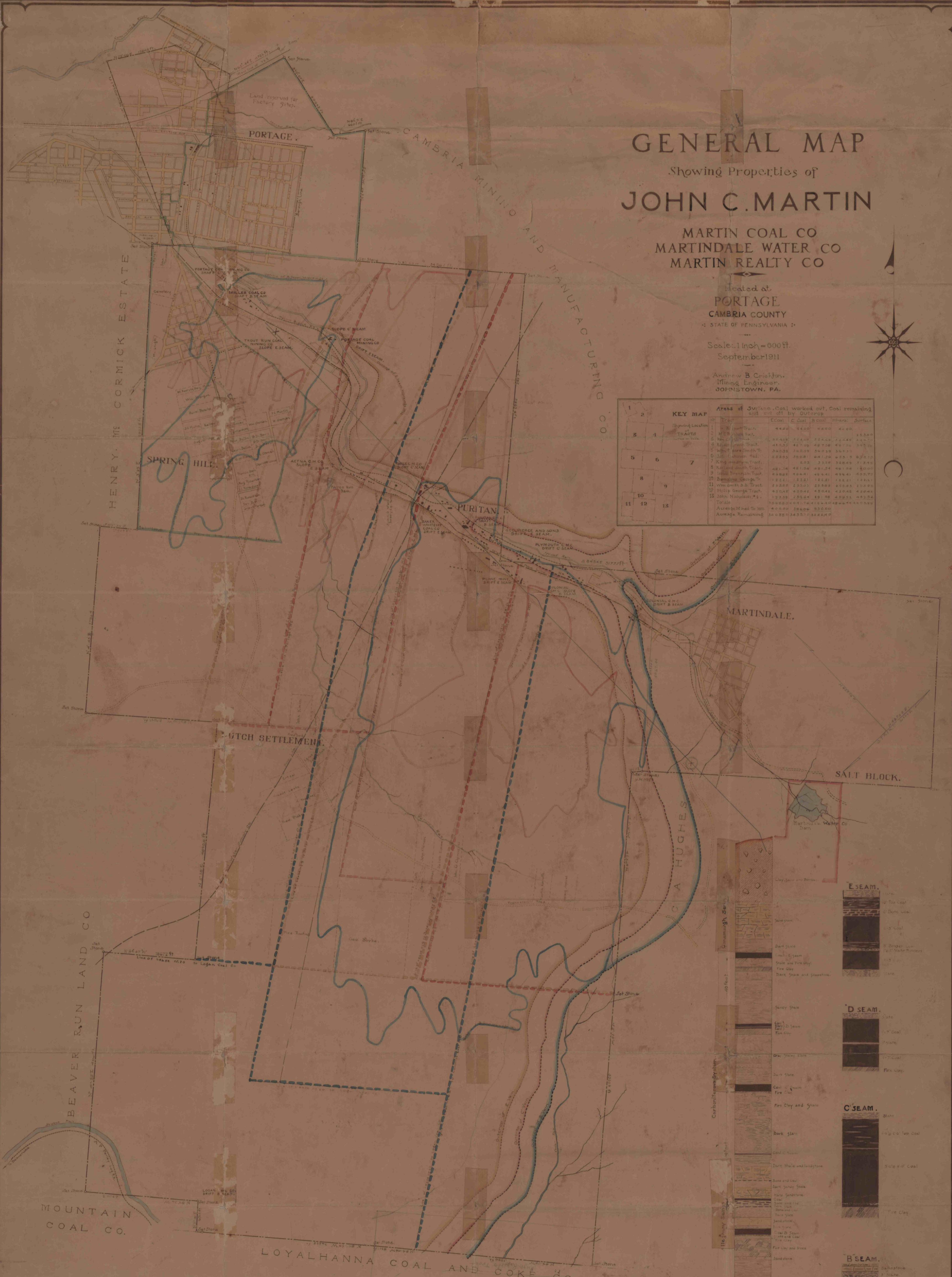
Located at  
**PORTAGE**  
 CAMBRIA COUNTY  
 STATE OF PENNSYLVANIA

Scale: 1 inch = 600 ft.  
 September 1911

Andrew B. Criffon,  
 Mining Engineer,  
 JOHNSTOWN, PA.



KEY MAP		Area of Outcrop, Coal worked out, Coal remaining and cut off by Outcrop			
Tract	Location	Coal	Worked out	Remaining	Cut off
1	W. Portage Tract	44,000	34,000	10,000	0
2	W. Portage Tract	88,000	72,000	16,000	0
3	W. Portage Tract	44,000	36,000	8,000	0
4	W. Portage Tract	44,000	36,000	8,000	0
5	W. Portage Tract	44,000	36,000	8,000	0
6	W. Portage Tract	44,000	36,000	8,000	0
7	W. Portage Tract	44,000	36,000	8,000	0
8	W. Portage Tract	44,000	36,000	8,000	0
9	W. Portage Tract	44,000	36,000	8,000	0
10	W. Portage Tract	44,000	36,000	8,000	0
11	W. Portage Tract	44,000	36,000	8,000	0
12	W. Portage Tract	44,000	36,000	8,000	0
13	W. Portage Tract	44,000	36,000	8,000	0
Total		700,000	560,000	140,000	0
Area of Inland to be Acquired Remaining		10,000	0	10,000	0



SECTION ON LINE X-X.  
 Vert. Scale: 1 inch = 200 ft.  
 Horz. Scale: 1 inch = 600 ft.

Small handwritten note or stamp in the bottom left corner.