

TOPOGRAPHY

STATE OF PENNSYLVANIA

GEORGE W. MCNEES, T. V. DUNVILLIERS, ANDREW S. MCCREATH

COMMISSIONERS

RICHARD R. HICE, STATE GEOLOGIST

PENNSYLVANIA

SOMERSET QUADRANGLE

DEPARTMENT OF THE INTERIOR

FRANKLIN K. LANE, SECRETARY

U. S. GEOLOGICAL SURVEY

GEORGE OTIS SMITH, DIRECTOR

TOPOGRAPHY

STATE OF PENNSYLVANIA

GEORGE W. MCNEES, T. V. DUNVILLIERS, ANDREW S. MCCREATH

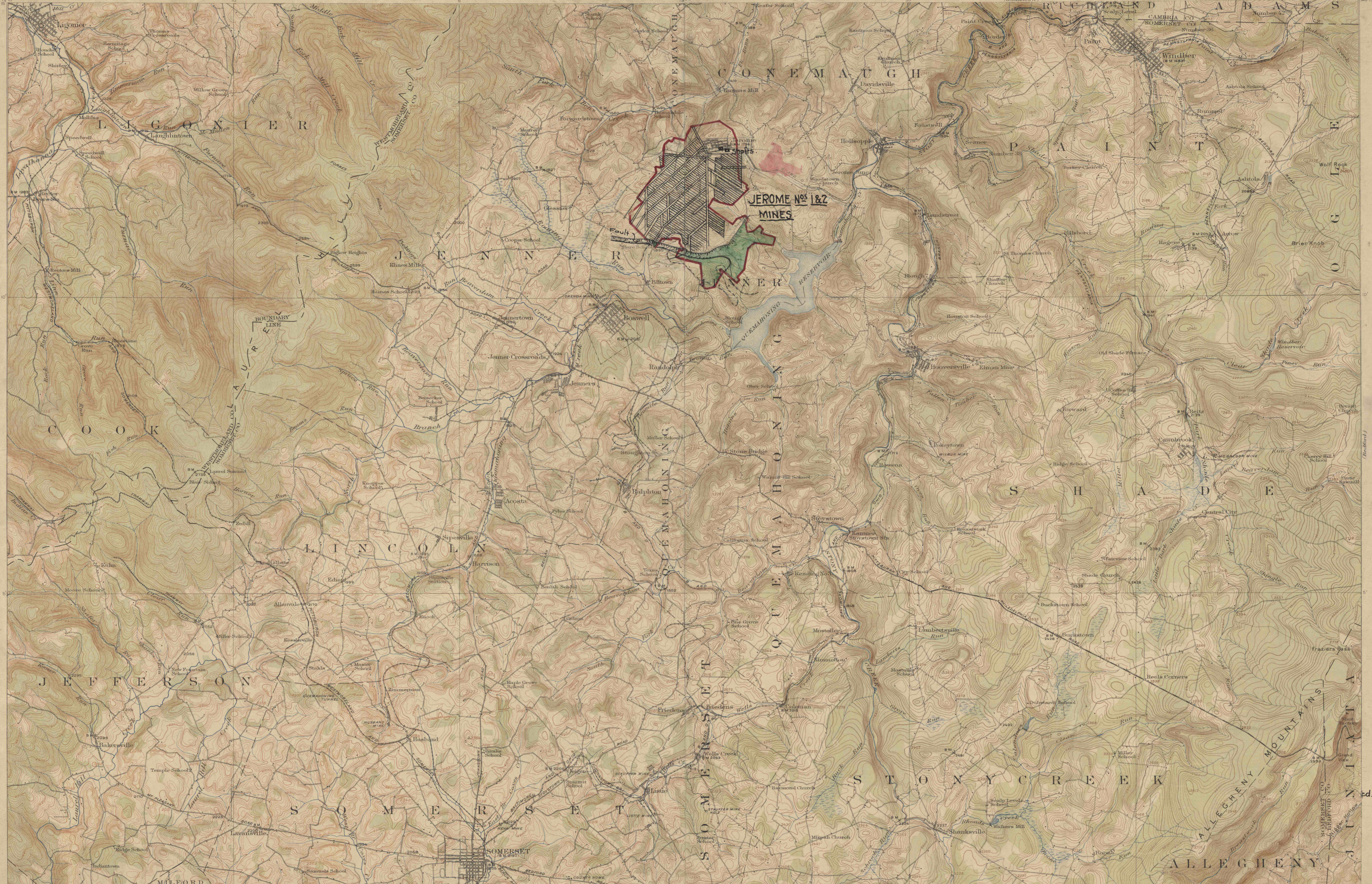
COMMISSIONERS

RICHARD R. HICE, STATE GEOLOGIST

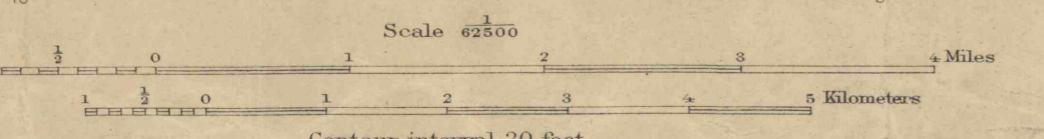
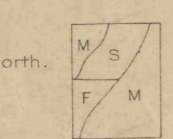
PENNSYLVANIA

WINDBER QUADRANGLE

DEPARTMENT OF THE INTERIOR
U. S. GEOLOGICAL SURVEY
GEORGE OTIS SMITH, DIRECTOR

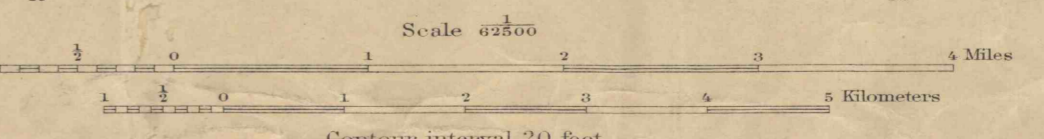
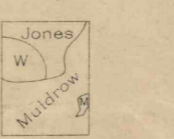


R. B. Marshall, Chief Geographer,
Frank Sutton, Geographer in charge,
Topography by Robert Muldrow, T. F. Staughton and E. W. Farnsworth,
Control by Geo. T. Hawkins, L. F. Biggs, and T. A. Green,
Surveyed in 1912-1913.



Edition of Sept. 1915

R. B. Marshall, Chief Geographer,
Frank Sutton, Geographer in charge,
Topography by Robert Muldrow, Oscar Jones,
S. E. Witherspoon, and E. D. Monroe,
Control by Geo. T. Hawkins and T. A. Green,
Surveyed in 1912-1914.



Edition of 1916

#1408
8-10-99
CC