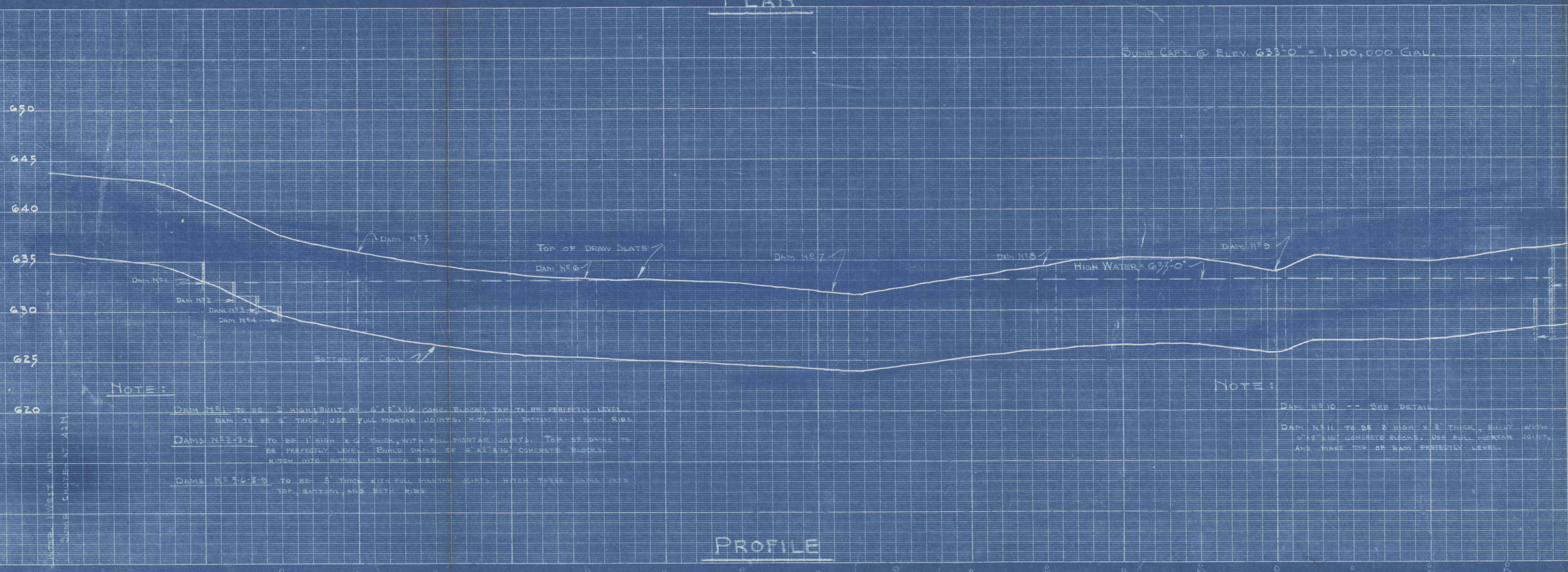
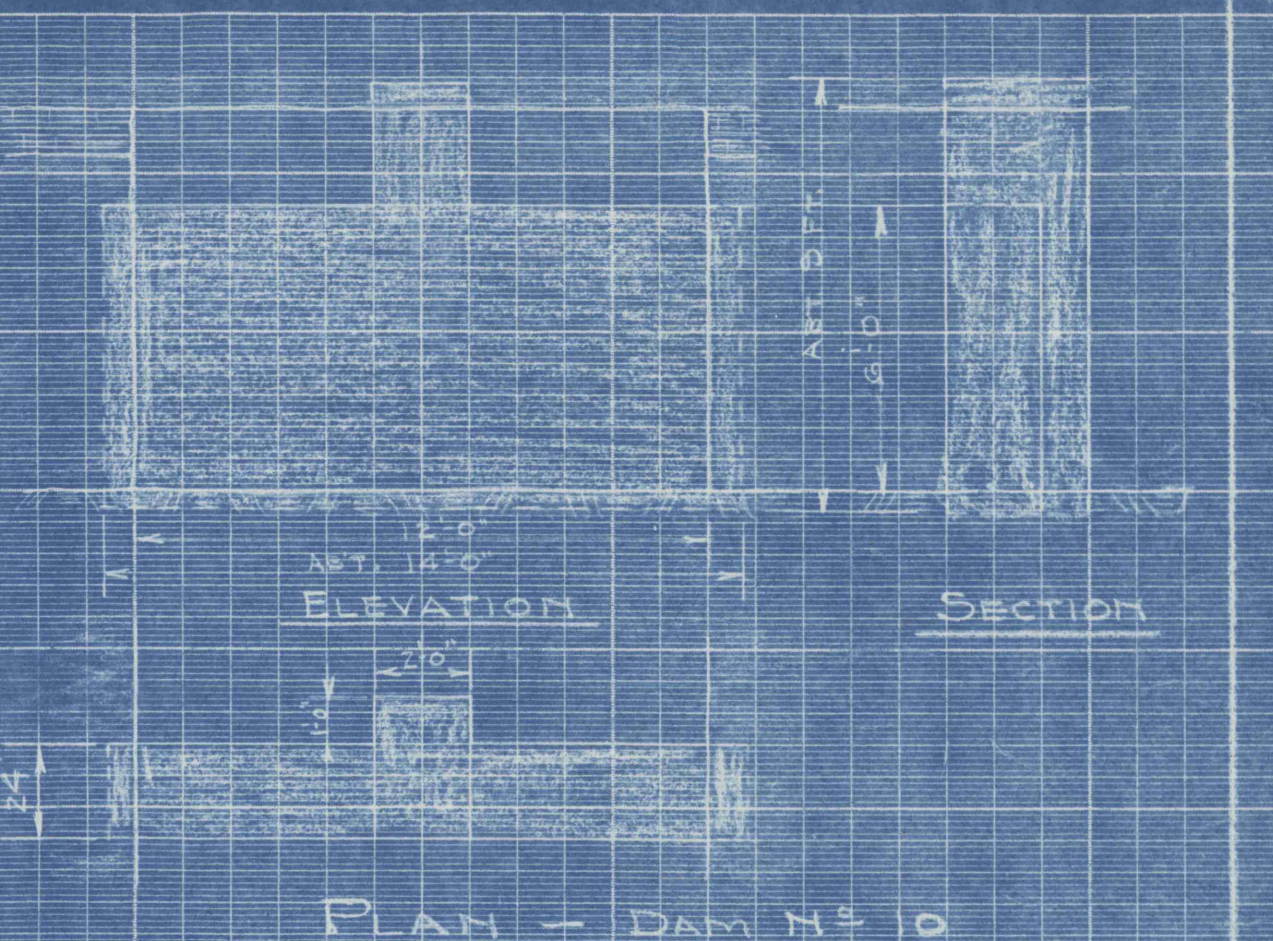


NOTE:  
TIMBER WITH TREATED, OR STEEL BARS, AND LAGGING OR UNTREATED WOOD LEGS AS THE SUMP IS DEVELOPED. AFTER SUMP ENTRIES ARE DRIVEN REPLACE THE UNTREATED LEGS WITH TREATED DRILLED COLUMNS.



NOTE:  
DAM N° 1 TO BE 2' HIGH BUILT OF 4"x8" AND CONC. BLOCKS; TOP TO BE PERFECTLY LEVEL. DAM TO BE 4" THICK. USE FULL MORTAR JOINTS. ALSO USE BUTT AND BUTT RIBS.  
DAMS N° 2-4 TO BE 1' HIGH x 6" THICK, WITH FULL MORTAR JOINTS. TOP OF DAMS TO BE PERFECTLY LEVEL. BUILD DAMS OF 6"x12" CONCRETE BLOCKS. HANG INTO BUTT AND BUTT RIBS.  
DAMS N° 5-9 TO BE 2' THICK WITH FULL MORTAR JOINTS. MATCH THESE DAMS WITH TOP, BOTTOM AND BOTH RIBS.

NOTE:  
DAM N° 10 -- SEE DETAIL.  
DAM N° 11 TO BE 2' HIGH x 2" THICK, BUILT WITH 6"x12" CONCRETE BLOCKS. USE FULL MORTAR JOINTS, AND MAKE TOP OF DAM PERFECTLY LEVEL.



GENERAL ARRANGEMENT Sump and Pumping Station - WEST MAINS AT 24 NORTH	
WEIRTON COAL COMPANY	ISABELLA MINE ISABELLA, PA.
DATE: 10-23-40	MADE BY: J. W. R.
REVISED: 7-2-41 2-22-44	SCALES: PLAN 1"=50' PROF. 1"=40'

K-764