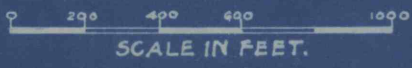


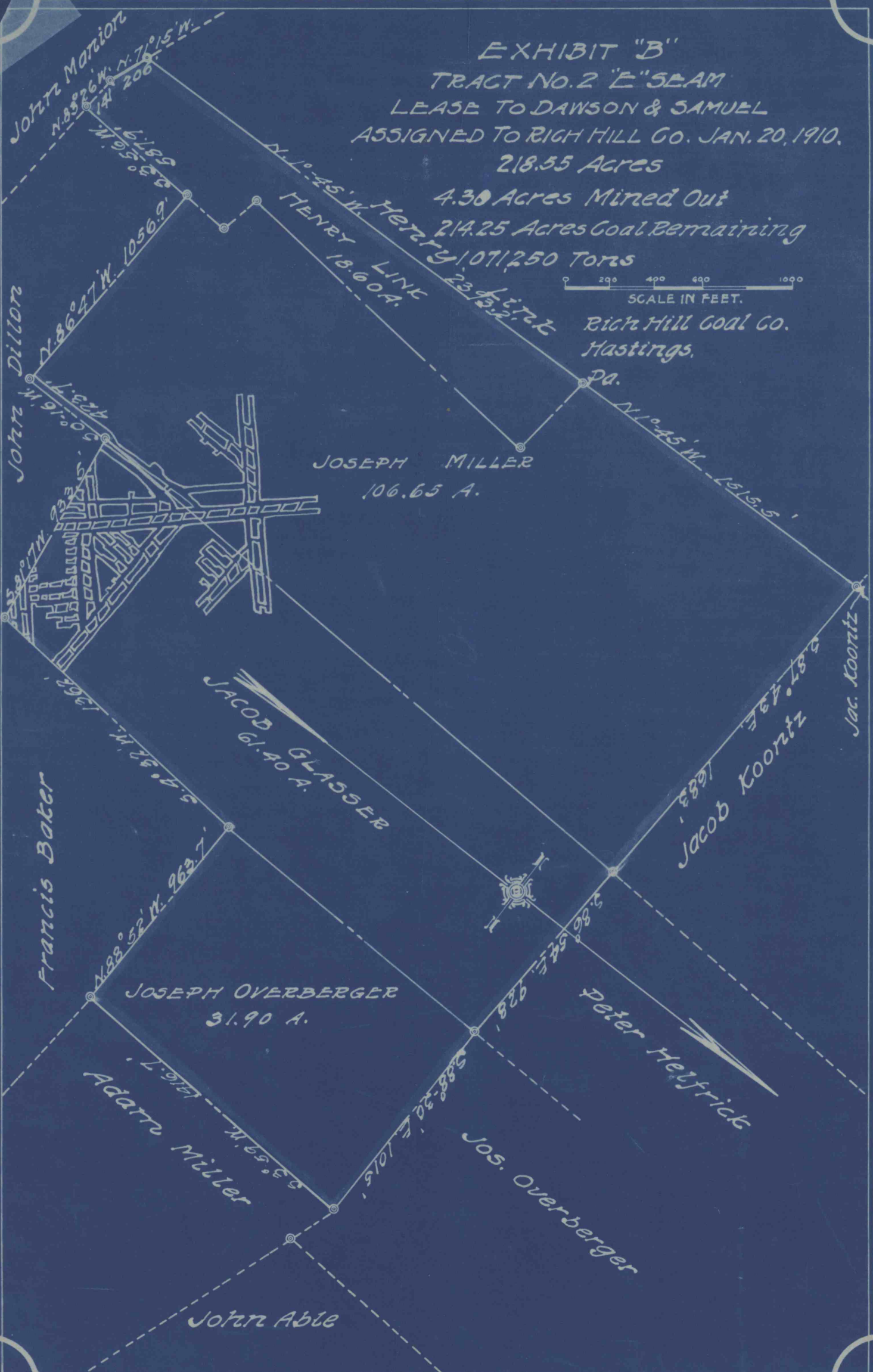
EXHIBIT "B"

TRACT NO. 2 "E" SEAM  
LEASE TO DAWSON & SAMUEL  
ASSIGNED TO RICH HILL CO. JAN. 20, 1910.  
218.55 Acres

4.30 Acres Mined Out  
214.25 Acres Coal Remaining  
1,071,250 Tons



Rich Hill Coal Co.  
Hastings,  
Pa.



JOHN MARION  
N. 83° 26' W. 206  
N. 71° 15' W. 161.89

JOHN DILLON  
N. 86° 47' W. 1056.9  
N. 80° 16' W. 423.16

N. 10° 45' W. HENRY LINE  
18.60 A.  
23.41  
13.52

JOSEPH MILLER  
106.65 A.

N. 10° 45' W. 1515.5

Francis Baker

JACOB GLASSER  
61.40 A.

Jacob Koontz  
587.78  
Jac. Koontz

JOSEPH OVERBERGER  
31.90 A.

Peter Helfrick

Adaru Miller  
N. 83° 52' W. 963.7  
N. 53° 59' E. 53.3

Jos. Overberger

John Able