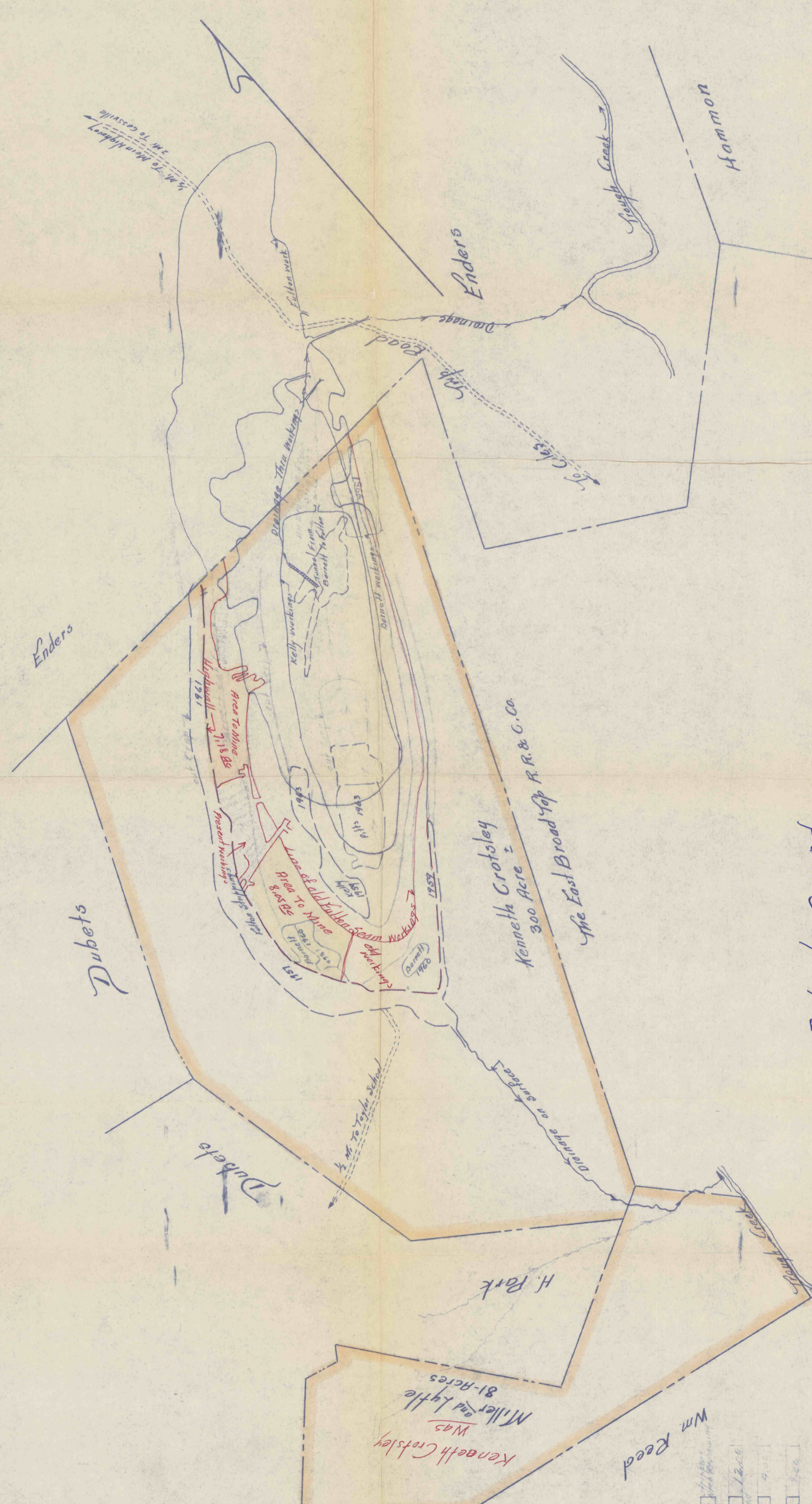


FIELD COPY



Geo. E. Miller

Kenneth Crottsley  
Was  
Miller and Lytle  
81-Acres

Wm. Reed

Owned By Crottsley	300 Ac
"	81 P. 12.00
Pills	576 9.00
Kelly	251 8.00
Barnett	267 17.00
Sutton	1223 175

Print Showing

Property Owned

By Ken Crottsley In Todd Twp. Huntingdon County Pennsylvania 1964

1" = 500'

E. Conne Engr. Robertsdale Pa.

#702-  
7-8-99  
CC