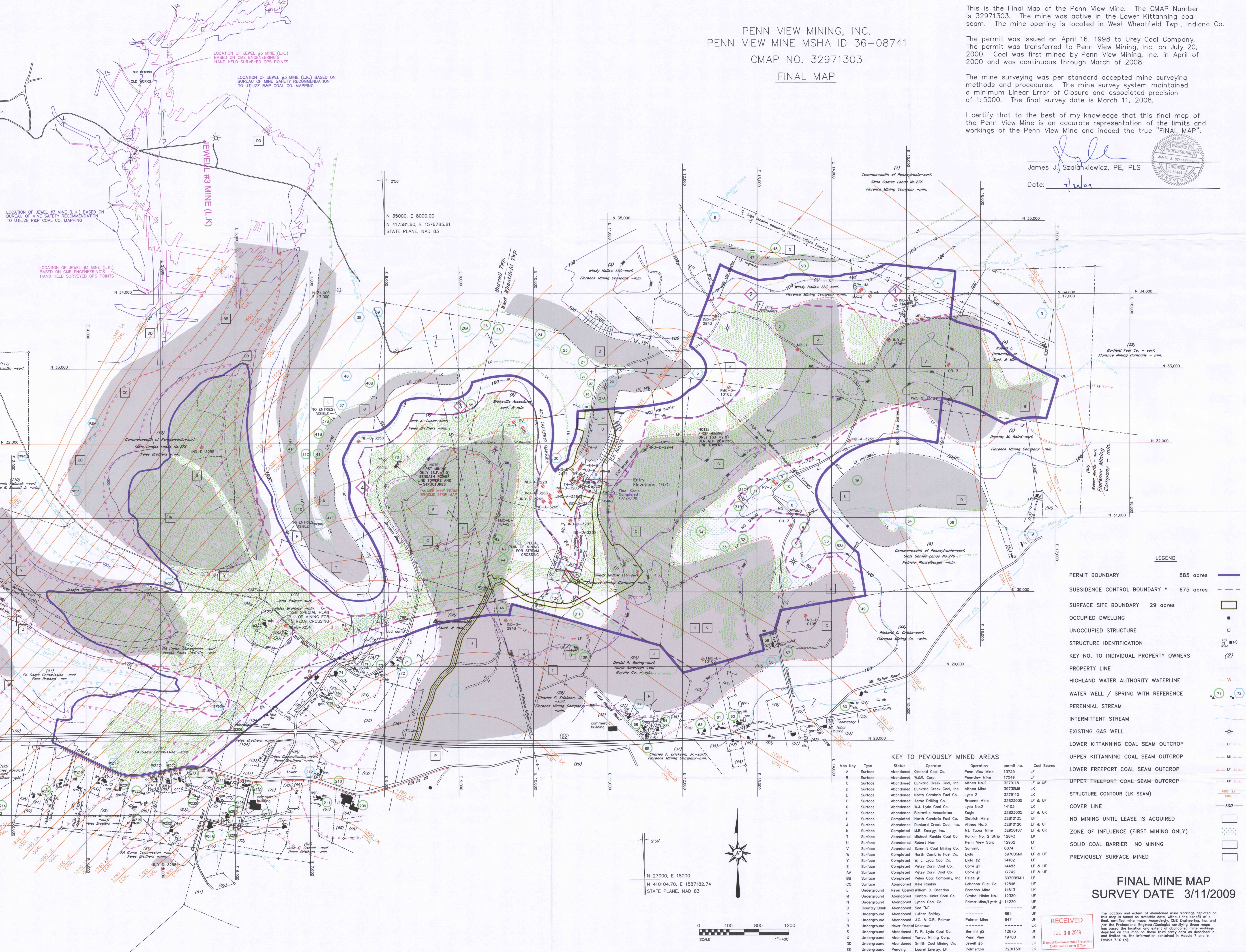


KEY TO SMALL PARCEL OWNERS

12. John Paul Chobot -surf. Peles Brothers-min.
13. Robert Cole -surf. Peles Brothers-min.
14. Paul Winkler -surf. Peles Brothers-min.
15. Terry L. Fink -surf. Peles Brothers-min.
16. Blue Sky -surf. Peles Brothers-min.
17. Linda E. Spaggiari -surf. Peles Brothers-min.
18. Thomas Price -surf. Peles Brothers-min.
19. Robert G. Palmer -surf. Peles Brothers-min.
20. Harry L. Palmer -surf. Peles Brothers-min.
21. PennDOT -surf. Peles Brothers-min.
22. Harold E. Fink, Jr. -surf. Peles Brothers-min.
23. Adelphi Communications, Corp. -surf. Peles Brothers-min.
24. Harold Lucas -surf. Peles Brothers-min.
25. Patrick H. Mowrey -surf. Peles Brothers-min.
26. Blairville Associates -surf. & min.
27. Blairville Associates -surf. & min.
31. Daniel R. Boring -surf. North American Coal Royalty Co.-min.
32. Kovack Family Revocable Trust -surf. Florence Mining Company-min.
33. Kimberly L. Faldy -surf. North American Coal Royalty Co.-min.
34. Russell Baird -surf. North American Coal Royalty Co.-min.
35. Edward D. Boring -surf. North American Coal Royalty Co.-min.
36. Edward D. Boring -surf. North American Coal Royalty Co.-min.
38. C.J. Cline -surf. Florence Mining Company-min.
39. Theodore C. Wagner -surf. Florence Mining Company-min.
40. Glen McEwee -surf. Florence Mining Company-min.
41. Elizabeth B. Gazzo -surf. Florence Mining Company-min.
42. Elizabeth B. Gazzo -surf. Florence Mining Company-min.
43. Scott A. Richter -surf. Peles Brothers-min.
44. PennDOT -surf. Florence Mining Company-min.
45. Betty Cline -surf. Florence Mining Company-min.
47. George Mikler -surf. Florence Mining Company-min.
48. Cheryl Brown -surf. Florence Mining Company-min.
49. Donald E. Baird -surf. Florence Mining Company-min.
50. Justin McConnell -surf. Florence Mining Company-min.
51. Betty L. Cline -surf. Florence Mining Company-min.
52. Leonard D. Lichtenfels -surf. Florence Mining Company-min.
53. M. Tobor Church -surf. & min.
54. PennDOT -surf. M. Charles Shomo-min.
55. Matthew Hoots -surf. M. Charles Shomo-min.
56. Clarence R. Kovack -surf. Florence Mining Company-min.
57. Carol Seybold -surf. Florence Mining Company-min.
58. Stanley C. Hendersa -surf. Florence Mining Company-min.
61. The State Mail -surf. Peles Brothers-min.
62. Marion D. Cline -surf. Peles Brothers-min.
63. Marion D. Cline -surf. Peles Brothers-min.
64. Marion D. Cline -surf. Peles Brothers-min.
65. U.S. Weather Bureau -surf. Peles Brothers-min.
66. Marion D. Cline -surf. Peles Brothers-min.
67. Marion D. Cline -surf. Peles Brothers-min.
69. Theodore W. Empfield -surf. Peles Brothers-min.
70. G. Glenn Thompson -surf. Peles Brothers-min.
71. Theodore W. Empfield -surf. Peles Brothers-min.
72. Penn View Equipment Company, Inc. -surf. Peles Brothers-min.
73. George Glenn Thompson -surf. Peles Brothers-min.
74. David J. Smith -surf. Peles Brothers-min.
75. John Patz -surf. Peles Brothers-min.
76. John Patz -surf. Peles Brothers-min.
77. Gary E. Thompson -surf. Peles Brothers-min.
78. George Glenn Thompson -surf. Peles Brothers-min.
79. Richard L. Peterson -surf. Peles Brothers-min.
80. Mildred S. Fath -surf. Peles Brothers-min.
81. Bruce A. Fath -surf. Peles Brothers-min.
82. G & E Family Limited Partnership -surf. Peles Brothers-min.
83. George E. Thompson -surf. Peles Brothers-min.
84. Glenn E. Thompson -surf. Peles Brothers-min.
85. Thomas A. Tainchick -surf. Peles Brothers-min.
86. Gary W. Shepherd -surf. Peles Brothers-min.
87. Edward Donald Wilson -surf. Peles Brothers-min.
88. Thomas J. Henderson -surf. Peles Brothers-min.
89. Roger L. Lydio -surf. Peles Brothers-min.
93. Fred Colquhoun -surf. Peles Brothers-min.
94. Harry J. Loughry -surf. Peles Brothers-min.
97. Raymond N. Kovack -surf. Peles Brothers-min.
98. Daniel J. Kovack -surf. Peles Brothers-min.
99. Komoc Tool Company -surf. Peles Brothers-min.
101. Penn View Equipment -surf. Peles Brothers-min.
102. Roger L. Clark -surf. Peles Brothers-min.
103. Louis S. Hoar, Jr. -surf. Peles Brothers-min.
106. Stacy Livingston -surf. Peles Brothers-min.
107. Jason A. Cline -surf. Peles Brothers-min.



PENN VIEW MINING, INC.
 PENN VIEW MINE MSHA ID 36-08741
 CMAP NO. 32971303
 FINAL MAP

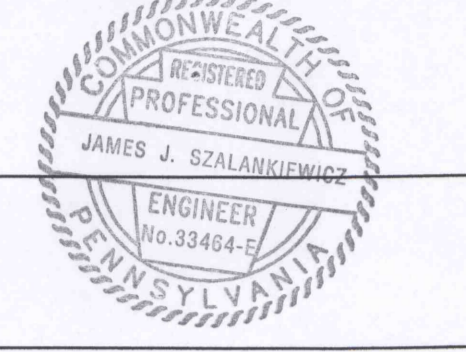
This is the Final Map of the Penn View Mine. The CMAP Number is 32971303. The mine was active in the Lower Kittanning coal seam. The mine opening is located in West Wheatfield Twp., Indiana Co.

The permit was issued on April 16, 1998 to Urey Coal Company. The permit was transferred to Penn View Mining, Inc. on July 20, 2000. Coal was first mined by Penn View Mining, Inc. in April of 2000 and was continuous through March of 2008.

The mine surveying was per standard accepted mine surveying methods and procedures. The mine survey system maintained a minimum Linear Error of Closure and associated precision of 1:5000. The final survey date is March 11, 2008.

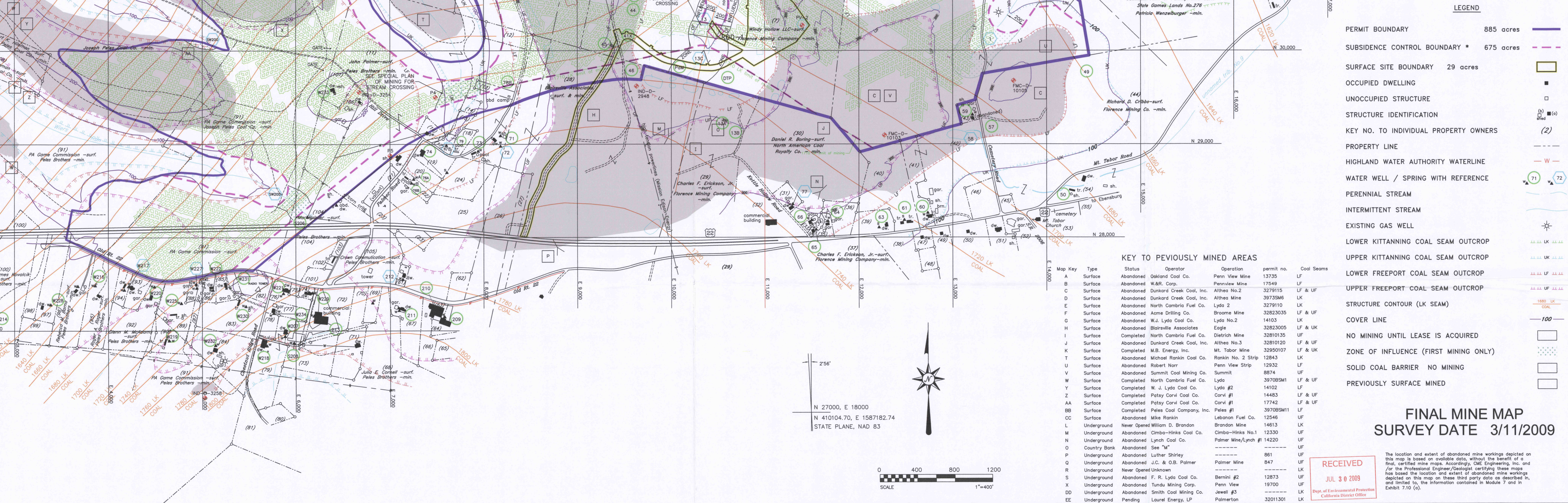
I certify that to the best of my knowledge that this final map of the Penn View Mine is an accurate representation of the limits and workings of the Penn View Mine and indeed the true "FINAL MAP".

James J. Szalankiewicz, PE, PLS
 James J. Szalankiewicz, PE, PLS
 Date: 7/24/09



KEY TO PREVIOUSLY MINED AREAS

Map Key	Type	Status	Operator	Operation permit no.	Cool Seams
A	Surface	Abandoned	Oakland Coal Co.	Penn View Mine 13735	LF
B	Surface	Abandoned	W.B. Corp.	Pennview Mine 17549	LF
C	Surface	Abandoned	Dunkard Creek Coal, Inc.	Althos No.2 3279115	LF & UF
D	Surface	Abandoned	Dunkard Creek Coal, Inc.	Althos Mine 3973548	LF
E	Surface	Abandoned	North Cambria Fuel Co.	Lydo 2 3279110	LF
F	Surface	Abandoned	Anne Dilling Co.	Bronze Mine 32823035	LF & UF
G	Surface	Abandoned	W.J. Lydo Coal Co.	Lydo No.2 14103	LF
H	Surface	Abandoned	Blairville Associates	Eagle 32823005	LF & UK
I	Surface	Completed	North Cambria Fuel Co.	Dieterich Mine 3280135	UF
J	Surface	Abandoned	Dunkard Creek Coal, Inc.	Althos No.3 32810120	LF & UF
K	Surface	Completed	M.B. Energy, Inc.	Mt. Tabor Mine 32951017	LF & UK
T	Surface	Abandoned	Michael Rankin Coal Co.	Rankin No. 2 Strip 12843	LF
U	Surface	Abandoned	Robert Nart	Penn View Strip 12932	LF
V	Surface	Completed	Summit Coal Mining Co.	Summit 8874	UF
W	Surface	Completed	North Cambria Fuel Co.	Lydo 39708M1	LF & UF
Y	Surface	Completed	W. J. Lydo Coal Co.	Lydo #2 14102	LF
Z	Surface	Completed	Patsy Corl Coal Co.	Corl #1 14483	LF & UF
AA	Surface	Completed	Patsy Corl Coal Co.	Corl #1 17742	LF & UF
BB	Surface	Completed	Peles Coal Company, Inc.	Peles #1 39708M1	LF
CC	Surface	Abandoned	Mike Rankin	Lebanon Fuel Co. 12546	UF
L	Underground	Never Opened	William D. Brandon	Brandon Mine 14613	UF
M	Underground	Abandoned	Combs-Hinks Coal Co.	Combs-Hinks No.1 12330	UF
N	Underground	Abandoned	Lynch Coal Co.	Palmer Mine/Lynch #1 14220	UF
O	Country Bank	Abandoned	See "M"	861	UF
P	Underground	Abandoned	Luther Shirley	867	UF
Q	Underground	Abandoned	J.C. & O.B. Palmer	Palmer Mine 847	UF
R	Underground	Never Opened	Unknown	-----	UF
S	Underground	Abandoned	F. R. Lydo Coal Co.	Barnell #2 12873	UF
X	Underground	Abandoned	Tandu Mining Corp.	Penn View 19700	UF
DD	Underground	Abandoned	Smith Coal Mining Co.	Jewel #3 874	UF
EE	Underground	Pending	Laurel Energy, LP	Palmerton 3201301	LF



NOTE: Original mapping done by VAPCO Engineering Parsippany, PA and acquired from Penn View Mining Inc.

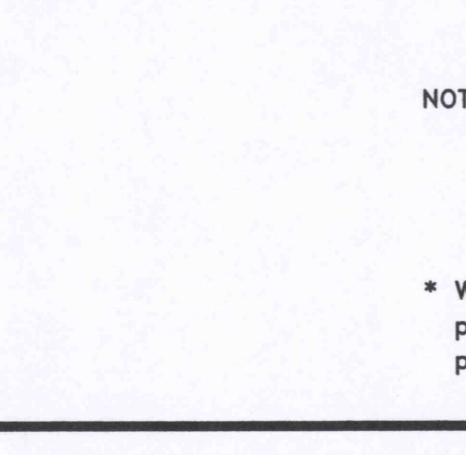
* Where the subsidence control plan boundary and the permit boundary are the same, the subsidence control plan boundary line has not been shown.

REVISIONS

No.	By	Date	Description
1	NEG	1/26/05	PERMIT EXPANSION
2	JMM	6/3/05	PERMIT EXPANSION
3	CAM	8/3/05	JEWEL #3 MINE LOCATION
4	JMO	10/16/07	Permit Renewal - 2007
5	JMO	11/30/07	Permit Renewal - 2007
6	JMO	03/09/08	Permit Renewal - 2007
7	JMO	07/25/08	FINAL MINE MAP

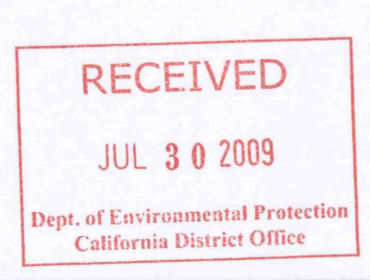
Drawn By: NEG
 Checked By: SH
 Date: 02/23/2009
 Scale: 1" = 400'
 Project No.: 0370-L012
 File Name: PENN_VIEW.dwg
 Drawing: 1 of 1

Base Map Prepared by
CME ENGINEERING
 Civil Mining Environmental Engineering, Inc.
 One Energy Place, Suite 8000, Latrobe, PA 15650
 724-532-4800 FAX: 724-532-4801 E-MAIL: info@cmeinc.com



PENN VIEW MINING, INC.
 LOWER KITTANNING COAL SEAM
 CMAP# 32971303 MSHA ID# 36-08741
 BURRELL & WEST WHEATFIELD TOWNSHIPS
 INDIANA COUNTY, PENNSYLVANIA

FINAL MINE MAP
 SURVEY DATE 3/11/2009



The location and extent of abandoned mine workings depicted on this map is based on available data, without the benefit of a field certified mine map. Accordingly, CME Engineering, Inc. and/or the Professional Engineer/Geologist certifying these maps has based the location and extent of abandoned mine workings depicted on this map on these data only. No guarantee is made, and limited to, the information contained in Module 7 and in Exhibit 7-10 (c).