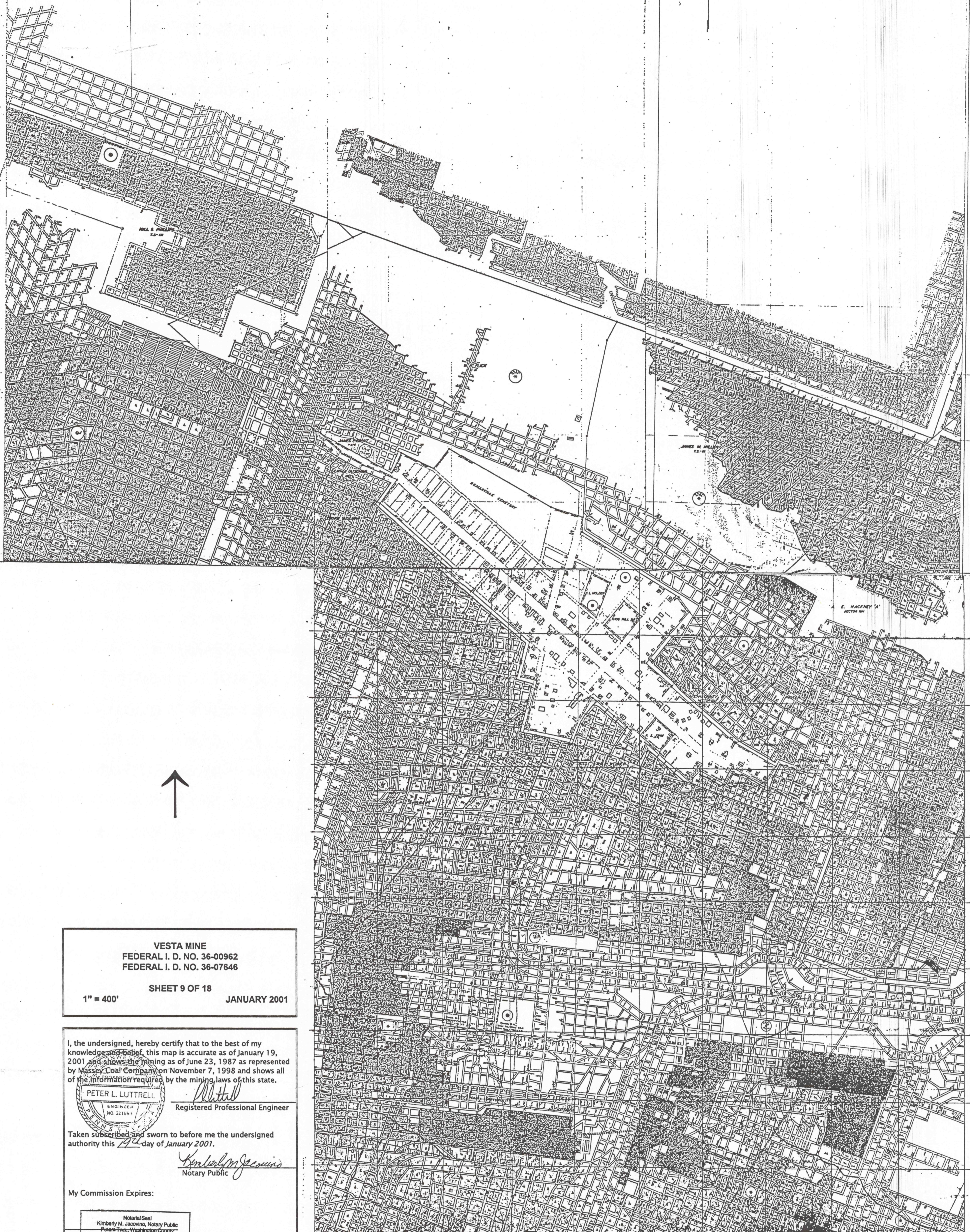



6

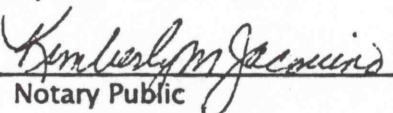


**VESTA MINE**  
 FEDERAL I. D. NO. 36-00962  
 FEDERAL I. D. NO. 36-07646  
  
 SHEET 9 OF 18  
 1" = 400'                      JANUARY 2001

I, the undersigned, hereby certify that to the best of my knowledge and belief, this map is accurate as of January 19, 2001 and shows the mining as of June 23, 1987 as represented by Massey Coal Company on November 7, 1998 and shows all of the information required by the mining laws of this state.

PETER L. LUTTRELL  
 ENGINEER  
 NO. 32156-E  
  
 Registered Professional Engineer

Taken subscribed and sworn to before me the undersigned authority this 19<sup>th</sup> day of January 2001.

  
 Notary Public

My Commission Expires:

Notarial Seal  
 Kimberly M. Jacovino, Notary Public  
 Pottsville, Berks, Washington County  
 My Commission Expires Aug. 24, 2004  
 Member, Pennsylvania Association of Notaries

9