

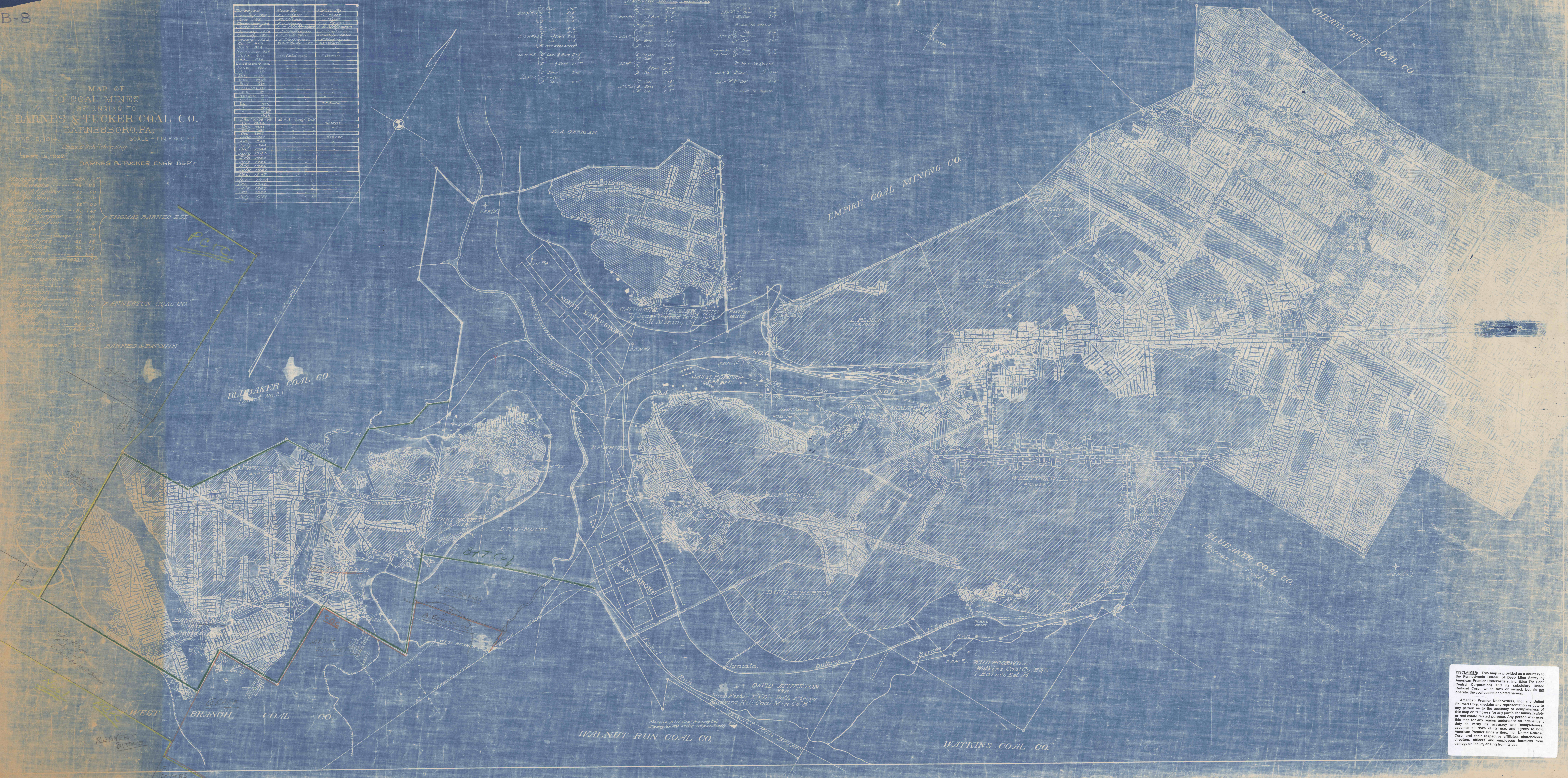
B-8

MAP OF D COAL MINES BELONGING TO BARNES & TUCKER COAL CO. BARNESBORO, PA. MAP B. 1914. CHAS. B. REHLER, ENGR. SEPT. 15, 1922. BARNES & TUCKER ENGR. DEPT.

Table with columns: Name, Grade, and other mine-related data. Includes names like Whipplewell, M.A. Works, and various other mine properties.

Table with columns: Name, Grade, and other mine-related data. Includes names like D.A. Gorman, D.M. Gorman, and others.

Diamond Drill Records table with columns: Name, Date, and other data. Lists records for various drill operations.



DISCLAIMER: This map is provided as a courtesy to the Pennsylvania Bureau of Deep Mine Safety by American Premier Underwriters, Inc. (The Penn American Premier Underwriters, Inc. (The Penn American Premier Underwriters, Inc.)) and its subsidiary United Railroad Corp., which own or control, but do not operate, the coal assets depicted hereon. American Premier Underwriters, Inc. and United Railroad Corp. disclaim any representation or duty to any person as to the accuracy or completeness of this map or its fitness for any particular mining safety or real estate related purpose. Any person who uses this map for any reason underlines an independent duty to verify its accuracy and completeness. American Premier Underwriters, Inc., United Railroad Corp., and their respective affiliates, shareholders, directors, officers and employees are harmless from damage or liability arising from its use.