

DISCLAIMER: This map is provided as a courtesy to the Pennsylvania Bureau of Deep Mine Safety by American Premier Underwriters, Inc. (f/k/a The Penn Central Railroad Corporation) and its subsidiary United Railroad Corp., which own or owned, but do not operate, the coal assets depicted hereon.

American Premier Underwriters, Inc. and United Railroad Corp. disclaim any representation or duty to any person as to the accuracy or completeness of this map or its fitness for any particular mining, safety or real estate related purpose. Any person who uses this map for any reason undertakes an independent duty to verify its accuracy and completeness, assumes all risks of its use, and agrees to hold American Premier Underwriters, Inc., United Railroad Corp. and their respective affiliates, shareholders, directors, officers and employees harmless from damage or liability arising from its use.

C. B. C. CORP.

MAP OF
REILLY NO. 1 MINE
"B" SEAM
OPERATED BY
JOS. H. REILLY COAL CO.
SPANGLER, CAMBRIA CO.
PENNA.

MARCH 1920.

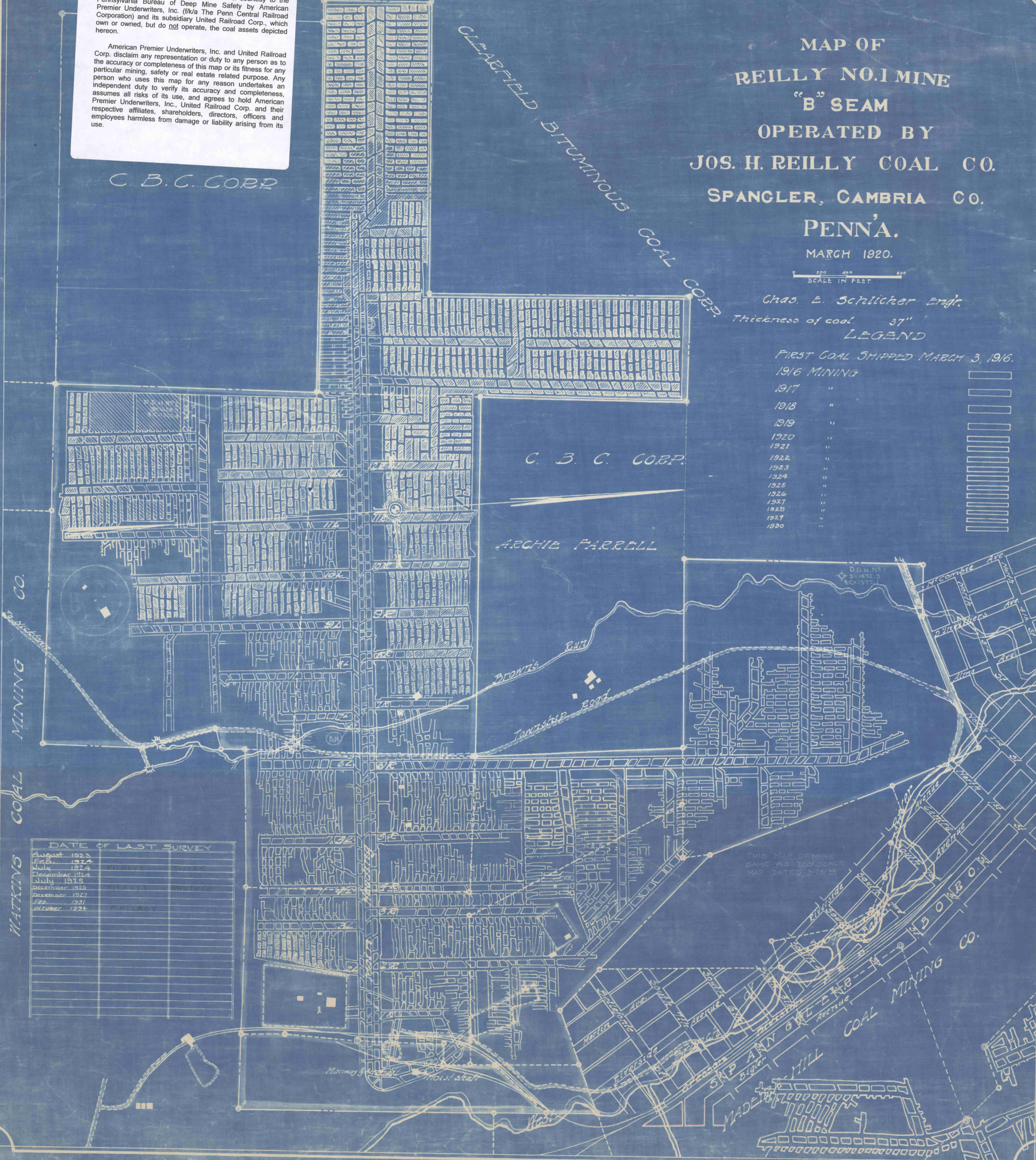
SCALE IN FEET

Chas. E. Schlicher Engr.

Thickness of coal 37"
LEGEND

FIRST COAL SHIPPED MARCH 3, 1916.

1916 MINING	
1917	
1918	
1919	
1920	
1921	
1922	
1923	
1924	
1925	
1926	
1927	
1928	
1929	
1930	



WATKINS COAL MINING CO.

DATE OF LAST SURVEY	
August 1923	
Feb. 1924	
July 1924	WATKINS
December 1924	WATKINS
July 1925	WATKINS
December 1925	WATKINS
December 1927	WATKINS
Feb. 1931	WATKINS
October 1934	WATKINS

THIS MAP OF MINE
SAME AS 200 SCALE
MAP DATED 3-18-20