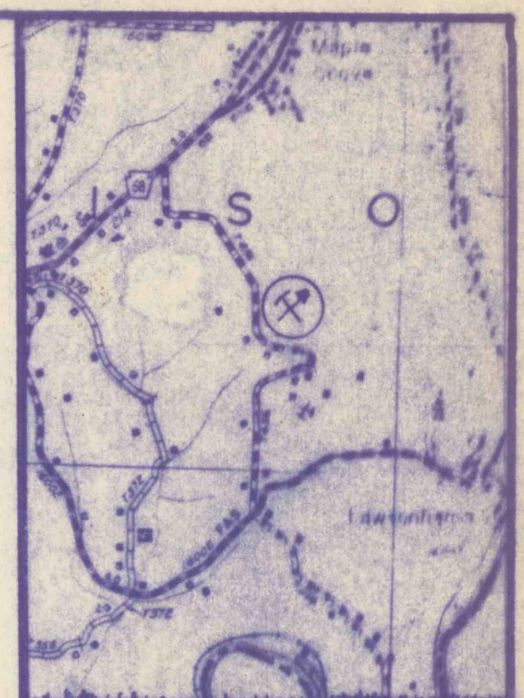
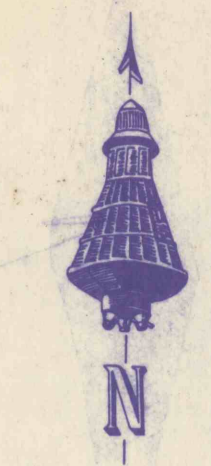
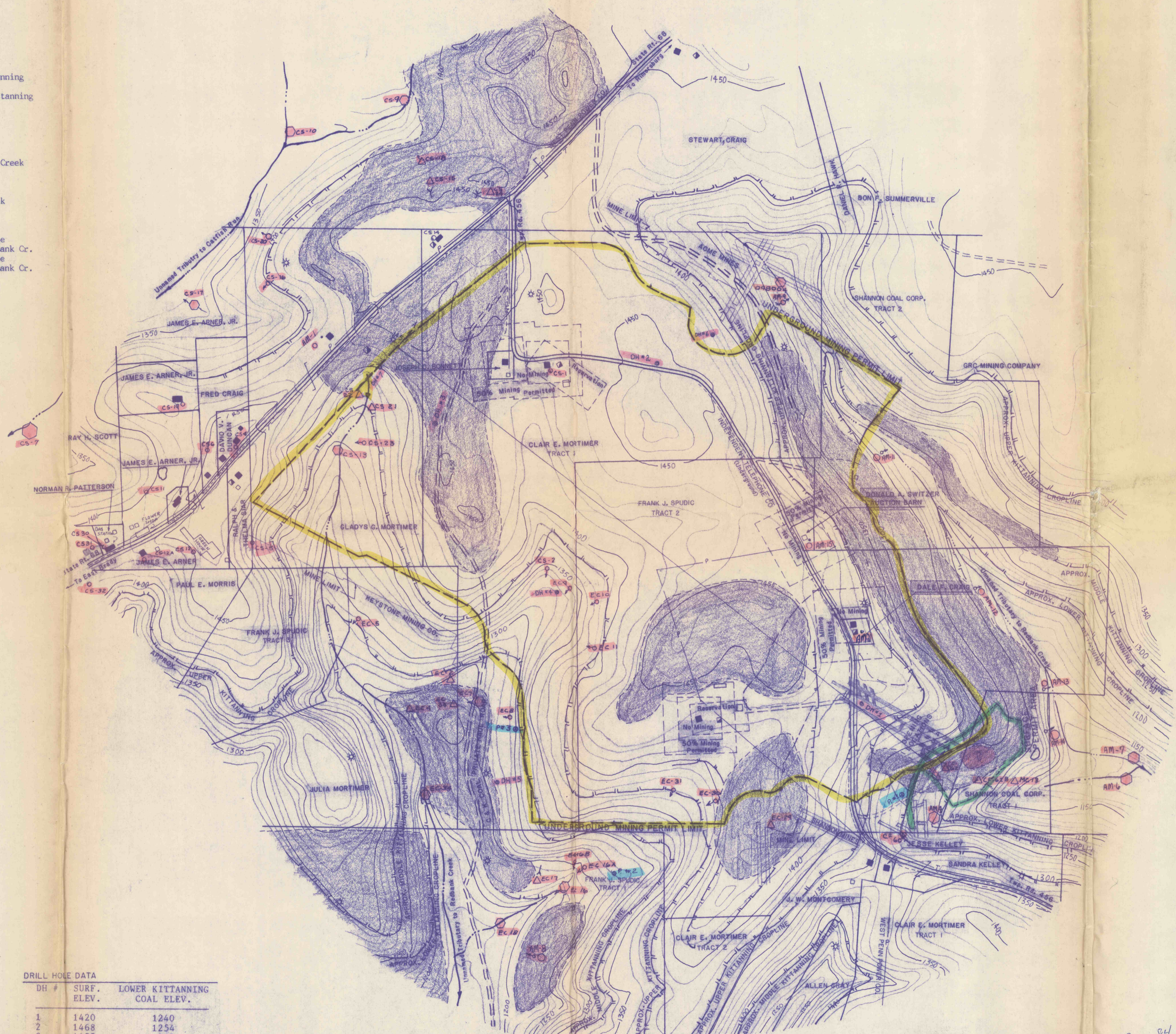


BACKGROUND AND MONITORING SAMPLE POINTS

SAMPLE POINT	ELEV.	SOURCE	SAMPLE POINT	ELEV.	SOURCE
AM-1	1425	Well - G. Mortimer	CS-17	1335	Drainage
AM-2	1425	Well - D. Craig	CS-18	1430	Drainage from spoil
AM-4	1230	Unnamed tributary	CS-19	1430	Well - J. Arner, Jr.
AM-6	1115	Unnamed tributary	CS-20	1390	Spring
AM-7	1100	Unnamed trib. to Redbank Cr.	CS-21	1370	Strip mine drainage
AM-8	1220	Spring at Lower Kitt. spoil	CS-22	1370	Strip mine drainage
AM-9	1320	Drainage	CS-23	1360	Spring
AM-10	1260	Spring-base of spoil	CS-24	1440	Fond in pit
AM-11	1260	Seep-base of spoil	EC-2	1260	Seep off Middle Kittanning
AM-12	1170	Seep - at cattails	EC-4	1220	Pond Drainage
AM-13	1150	Spring - base of spoil	EC-5	1285	Spring-off Middle Kittanning
AM-14	1160	Spring-outside mine	EC-7	1255	Drainage
AM-15	1435	Well-supplies Auction Barn	EC-8	1285	Spring
CF-60	1300	Spring-Supplies two houses	EC-9	1350	Spring
CF-62	1235	Drainage at face	EC-10	1370	Spring
CF-62B	1230	After treatment	EC-11	1380	Spring
CS-2	1350	Spring	EC-14	1170	Spring
CS-4	1465	House well - D. Duncan	EC-16	1220	Tributary to Redbank Creek
CS-5	1420	Well - R. Siar	EC-16A	1250	Spring
CS-6	1450	Well - F. Craig	EC-16B	1250	Spring
CS-7	1310	Unnamed trib. to Catfish Run	EC-17	1235	Drift Mine Discharge
CS-9	1365	Unnamed trib. to Catfish Run	EC-18	1185	Trib. to Redbank Creek
CS-10	1350	Unnamed trib. to Catfish Run	EC-29	1400	Pond at Surface Mine
CS-11	1400	Well - J. Arner	EC-30	1400	Spring
CS-12	1450	Well - J. Arner	EC-31	1340	Spring
CS-12A	1430	Well - Arner Rental	EC-33	1240	Surface Mine Discharge
CS-13	1350	Unnamed trib. to Catfish Run	EC-34	1200	Surface Mine Discharge
CS-15	1440	Pond in pit	MC-13	1170	Surface Mine Discharge
CS-15	1405	Spring	098004	1285	Unnamed trib. to Redbank Cr.



LOCATION MAP
Scale: 1" = 1 Mile



LEGEND

- PROPOSED UNDER GROUND PERMIT LIMIT
- PROPOSED SURFACE PERMIT LIMIT
- PIEZOMETER
- SPRING
- WETLAND
- DRAINAGE
- BARN
- SHED
- GARAGE
- HOUSE
- MOBILE HOME
- POWER
- TELEPHONE
- PIPE LINE
- WATER WELL
- OIL WELL
- GAS WELL
- DRILL HOLE
- DEEP MINE
- TOPSOIL STORAGE AREA
- COAL REFUSE STORAGE AREA
- COAL STOCKPILE STORAGE AREA
- COAL BARRIER
- EXISTING STRIPPING
- BACKGROUND SAMPLE
- BACKGROUND STREAM SAMPLE
- MONITORING POINTS

FACE-UP AREA

THE OVERBURDEN HAS PREVIOUSLY BEEN REMOVED DOWN TO THE COAL SEAM. NO NEW FACE-UP AREAS WILL BE ESTABLISHED.

MINE OPENING ELEVATIONS

OPENING #	ELEVATION
OPENING # 1	1234.4
OPENING # 2	1240.6
OPENING # 3	1239.1
OPENING # 4	1237.1

MINE CLOSURE

MINE SEALS WILL BE CONSTRUCTED UPON COMPLETION OF MINING AT THE LOCATIONS OF EXISTING MINE SEALS.

DRILL HOLE DATA

DH #	SURF. ELEV.	LOWER KITTANNING COAL ELEV.
1	1420	1240
2	1468	1254
3	1455	1239
4	1320	1198
5	1272	1225
6	1424	1232.3
7	1402	1219

SUBSURFACE PROPERTY OWNERS

C&K COAL COMPANY OWNS ALL LOWER KITTANNING COAL TO BE MINED WITHIN PERMIT AREA. CONTIGUOUS SUBSURFACE AREA IS OWNED BY LISTED SURFACE OWNER.

NOTE: PIEZOMETER LOCATIONS ARE ONLY APPROXIMATE. EXACT LOCATIONS AND ELEVATIONS WILL BE MADE UPON COMPLETION OF INSTALLATION.

Page 84



RECEIVED
MAY 21 1984
ENVIRONMENTAL REGULATION
Monaca Regional Office

MINE DEVELOPMENT MAP

hScott Professional Engineer
Registered Surveyor
RD 2 Rimersburg, Pa.

C & K COAL COMPANY
"HALLISON ENGINEERING # 1B"

SCALE: 1" = 400'
DATE: 5-19-84
DWN: CKD
APVD: FILE
MADISON TOWNSHIP
CLARION COUNTY

REVISIONS BY DATE NO.

