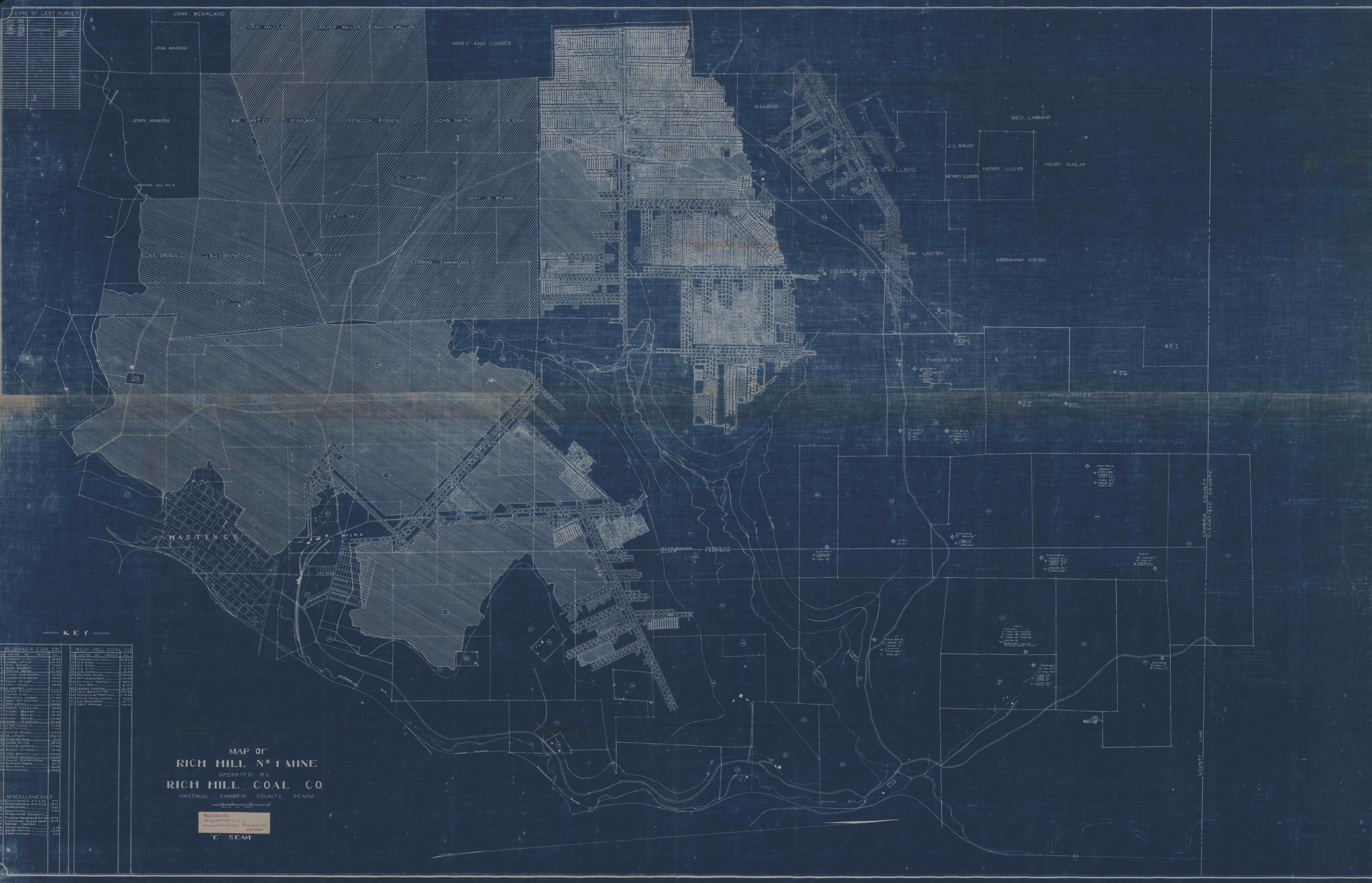


DATE OF LAST SURVEY	
1887	1888
1889	1890
1891	1892
1893	1894
1895	1896
1897	1898
1899	1900
1901	1902
1903	1904
1905	1906
1907	1908
1909	1910
1911	1912
1913	1914
1915	1916
1917	1918
1919	1920
1921	1922
1923	1924
1925	1926
1927	1928
1929	1930
1931	1932
1933	1934
1935	1936
1937	1938
1939	1940
1941	1942
1943	1944
1945	1946
1947	1948
1949	1950
1951	1952
1953	1954
1955	1956
1957	1958
1959	1960
1961	1962
1963	1964
1965	1966
1967	1968
1969	1970
1971	1972
1973	1974
1975	1976
1977	1978
1979	1980
1981	1982
1983	1984
1985	1986
1987	1988
1989	1990
1991	1992
1993	1994
1995	1996
1997	1998
1999	2000



KEY

BLUBAKER COAL CO.		RICH HILL COAL CO.			
NO.	NAME OF TRACT	AC.	NO.	NAME OF TRACT	AC.
1	Henry Miller	18.00	17	Henry Miller	18.00
2	John Miller	18.00	18	D. W. Gray	18.00
3	John Miller	18.00	19	D. W. Gray	18.00
4	Joseph Overberger	18.00	20	D. W. Gray	18.00
5	Joseph Overberger	18.00	21	D. W. Gray	18.00
6	John Miller	18.00	22	Wm. Ashby	18.00
7	John Miller	18.00	23	Anthony Yeager	4.84
8	John Miller	18.00	24	John Berry	9.00
9	John Miller	18.00	25	John Berry	9.00
10	John Miller	18.00	26	John Berry	9.00
11	John Miller	18.00	27	John Berry	9.00
12	John Miller	18.00	28	John Berry	9.00
13	John Miller	18.00	29	John Berry	9.00
14	John Miller	18.00	30	John Berry	9.00
15	John Miller	18.00	31	John Berry	9.00
16	John Miller	18.00	32	John Berry	9.00
17	John Miller	18.00	33	John Berry	9.00
18	John Miller	18.00	34	John Berry	9.00
19	John Miller	18.00	35	John Berry	9.00
20	John Miller	18.00	36	John Berry	9.00
21	John Miller	18.00	37	John Berry	9.00
22	John Miller	18.00	38	John Berry	9.00
23	John Miller	18.00	39	John Berry	9.00
24	John Miller	18.00	40	John Berry	9.00
25	John Miller	18.00	41	John Berry	9.00
26	John Miller	18.00	42	John Berry	9.00
27	John Miller	18.00	43	John Berry	9.00
28	John Miller	18.00	44	John Berry	9.00
29	John Miller	18.00	45	John Berry	9.00
30	John Miller	18.00	46	John Berry	9.00
31	John Miller	18.00	47	John Berry	9.00
32	John Miller	18.00	48	John Berry	9.00
33	John Miller	18.00	49	John Berry	9.00
34	John Miller	18.00	50	John Berry	9.00
35	John Miller	18.00	51	John Berry	9.00
36	John Miller	18.00	52	John Berry	9.00
37	John Miller	18.00	53	John Berry	9.00
38	John Miller	18.00	54	John Berry	9.00
39	John Miller	18.00	55	John Berry	9.00
40	John Miller	18.00	56	John Berry	9.00
41	John Miller	18.00	57	John Berry	9.00
42	John Miller	18.00	58	John Berry	9.00
43	John Miller	18.00	59	John Berry	9.00
44	John Miller	18.00	60	John Berry	9.00
45	John Miller	18.00	61	John Berry	9.00
46	John Miller	18.00	62	John Berry	9.00
47	John Miller	18.00	63	John Berry	9.00
48	John Miller	18.00	64	John Berry	9.00
49	John Miller	18.00	65	John Berry	9.00
50	John Miller	18.00	66	John Berry	9.00
51	John Miller	18.00	67	John Berry	9.00
52	John Miller	18.00	68	John Berry	9.00
53	John Miller	18.00	69	John Berry	9.00
54	John Miller	18.00	70	John Berry	9.00
55	John Miller	18.00	71	John Berry	9.00
56	John Miller	18.00	72	John Berry	9.00
57	John Miller	18.00	73	John Berry	9.00
58	John Miller	18.00	74	John Berry	9.00
59	John Miller	18.00	75	John Berry	9.00
60	John Miller	18.00	76	John Berry	9.00
61	John Miller	18.00	77	John Berry	9.00
62	John Miller	18.00	78	John Berry	9.00
63	John Miller	18.00	79	John Berry	9.00
64	John Miller	18.00	80	John Berry	9.00
65	John Miller	18.00	81	John Berry	9.00
66	John Miller	18.00	82	John Berry	9.00
67	John Miller	18.00	83	John Berry	9.00
68	John Miller	18.00	84	John Berry	9.00
69	John Miller	18.00	85	John Berry	9.00
70	John Miller	18.00	86	John Berry	9.00
71	John Miller	18.00	87	John Berry	9.00
72	John Miller	18.00	88	John Berry	9.00
73	John Miller	18.00	89	John Berry	9.00
74	John Miller	18.00	90	John Berry	9.00
75	John Miller	18.00	91	John Berry	9.00
76	John Miller	18.00	92	John Berry	9.00
77	John Miller	18.00	93	John Berry	9.00
78	John Miller	18.00	94	John Berry	9.00
79	John Miller	18.00	95	John Berry	9.00
80	John Miller	18.00	96	John Berry	9.00
81	John Miller	18.00	97	John Berry	9.00
82	John Miller	18.00	98	John Berry	9.00
83	John Miller	18.00	99	John Berry	9.00
84	John Miller	18.00	100	John Berry	9.00

**MAP OF
RICH HILL N° 1 MINE
OPERATED BY
RICH HILL COAL CO.
HASTINGS, CAMBRIA COUNTY, PENNA.**

Scale in Feet
1" = 40'

E SEAM

CAMBRIA COUNTY
CLINTON COUNTY
COUNTY LINE