

MAPLE CREEK MINING, INC.

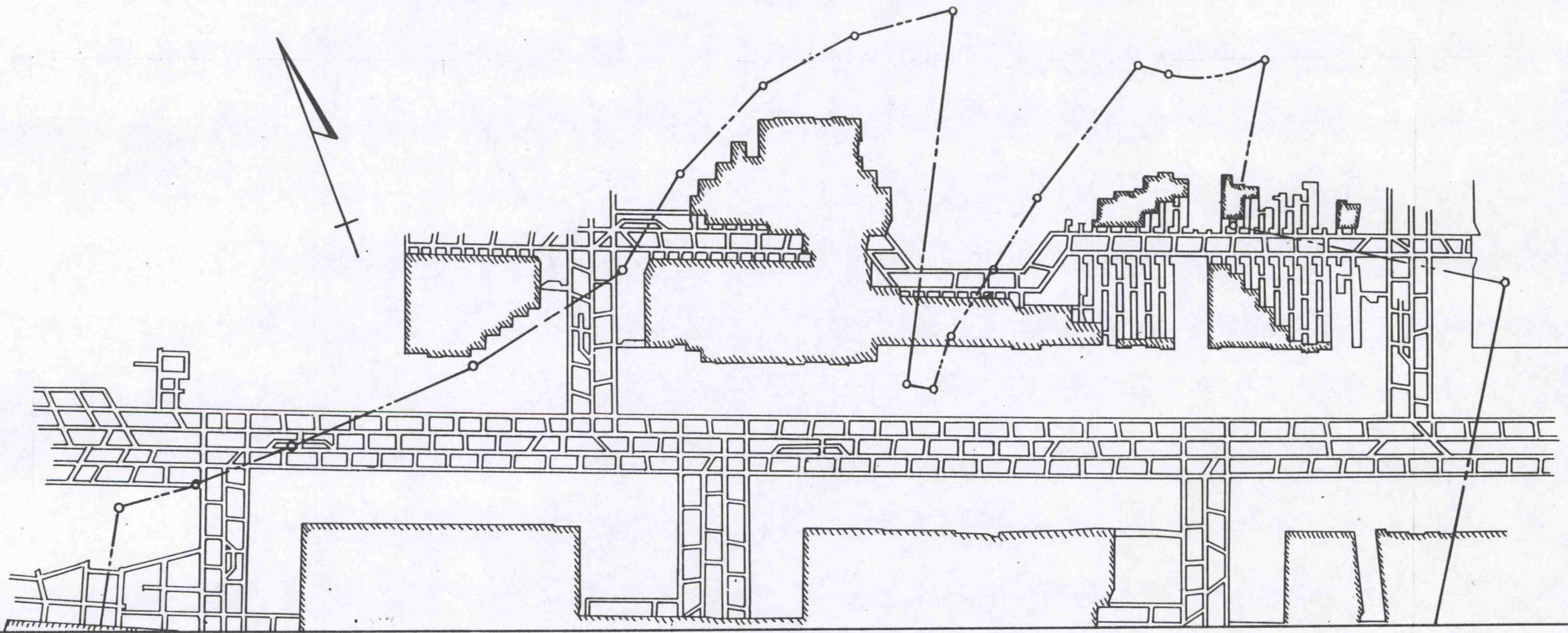
MAPLE CREEK MINE

36-00970-0

NOTTINGHAM, FALLOWFIELD,
SOMERSET, CARROLL TOWNSHIPS
AND NEW EAGLE BOROUGH
WASHINGTON COUNTY, PA.

SCALE 1" = 300'

SPINNER SHAFT
981 ROUTE 917
BENTLEYVILLE, PA. 15314



MAPLE CREEK MINE

LOCATION	QUANTITY	METHANE (%)	OXYGEN (%)
Bleeder Evaluation Stations			
1-89	130	0.0	20.4
1-90	260	0.0	20.5
Monitoring Stations			
MS-NE-1	71.00	0.0	20.7
MS-NE-2	14.375	0.0	20.7
MS-NE-3	2.900	0.0	20.8
MS-NE-4	3.348	0.0	20.9
MS-NE-5	23.400	0.0	20.8
MS-NE-6	5.940	0.0	20.5
MS-NE-7	3.570	0.0	20.5
MS-NE-8	1.740	0.0	20.5
MS-NE-9	5.175	0.0	20.5
MS-NE-10	5.405	0.0	20.5
MS-NE-11	15.300	0.0	20.5
MS-HK	29.240	0.0	20.8
MS-HK1A	4.050	0.0	20.8
MS-HK1B	3.645	0.0	20.8
MS-HK2	7.200	0.0	20.8

Information on these maps comply with Section No's 75.372 and 75.1200.
Ventilation adjustments will be made in accordance with the approved ventilation system as sections are relocated within the projected areas.
No underground mining above or below Maple Creek Mine.

Closed loop survey (1 in 5,000).

The following petition for modifications are approved for Maple Creek Mine:

- M-84-181-C Mine Through Plugged Well
- M-84-217-C Co Monitoring
- M-84-218-C Belt Air At Face
- M-95-029-C High Voltage on Longwall Face

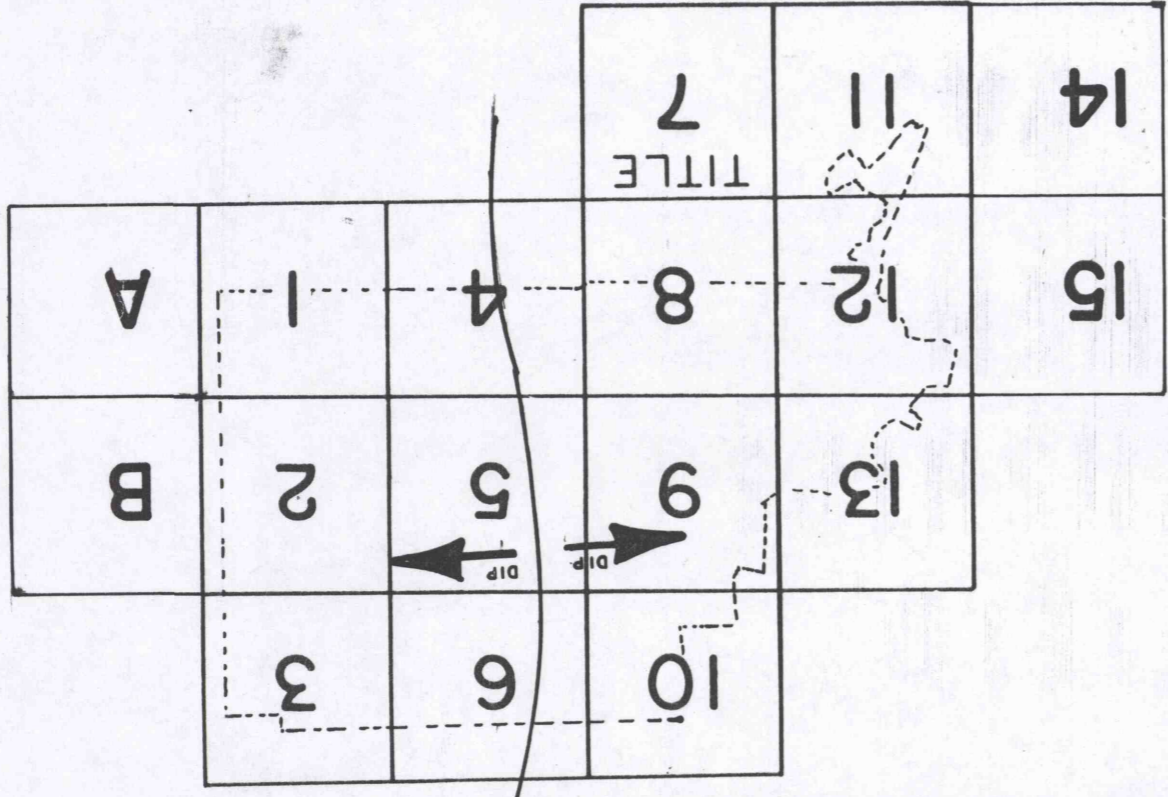
Map prepared as of: October 1, 2003

Last day of mining: May 9, 2003

Map projected to: (No projections shown.)

SECTION LETTER	SECTION NAME	SECTION INTAKE	MMU No. (cfm)	CFM	Methane
RETURN *					

* Does not include bleeder



- LEGEND**
- M METAL STOPPING
 - STOPPING
 - ⊖ STOPPING WITH DROP DOOR
 - || STOPPING WITH MAN DOOR
 - AIR EVALUATION STATION
 - ⊕ REGULATOR
 - X OVERCAST
 - AIR DIRECTION
 - ESCAPEWAYS
 - ⊗ PROJECTED OVERCAST
 - ⊙ OIL OR GAS WELL
 - ⊕ FIXED REGULATOR
 - ★ BLEEDER EVALUATION STATION
 - ⊕ CLOSED REGULATOR
 - WATER AREA
 - ⊕ CANVAS STOPPING
 - ⊕ TRACK
 - ⊕ BELT
 - ▽ MONITORING STATION
 - CO SENSOR
 - ▨ MP-(MONITORING POINT)
 - ▨ PILLER RECOVERY AREA