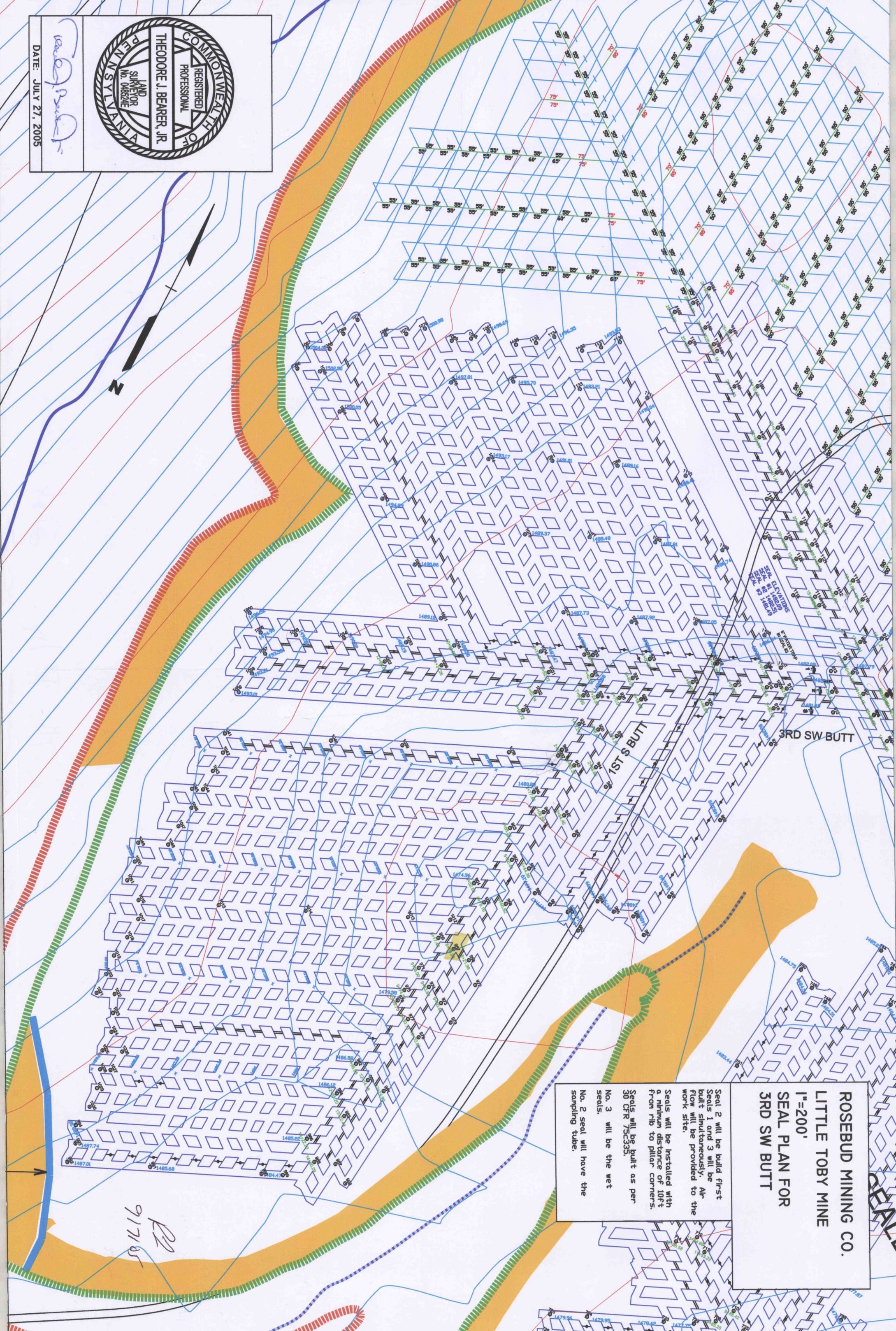
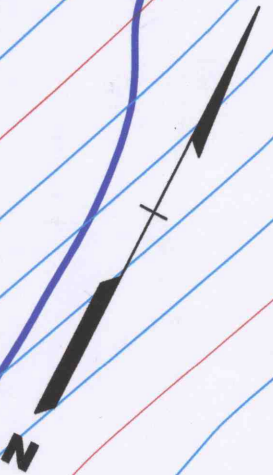


 REGISTERED PROFESSIONAL LAND SURVEYOR
 THEODORE J. BEARER, JR.
 No. 048524E
 COMMONWEALTH OF PENNSYLVANIA

DATE: JULY 27, 2005



ROSEBUD MINING CO.
LITTLE TOBY MINE
1"=200'
SEAL PLAN FOR
3RD SW BUTT

Seal 2 will be built first
 Seals 1 and 3 will be
 built simultaneously. Air
 flow will be provided to the
 work site.
 Seals will be installed with
 a minimum distance of 10ft.
 from rib to pillar corners.
 Seals will be built as per
 30 CFR 75C333.
 No. 3 will be the wet
 seals.
 No. 2 seal will have the
 sampling tube.

P2
 917105