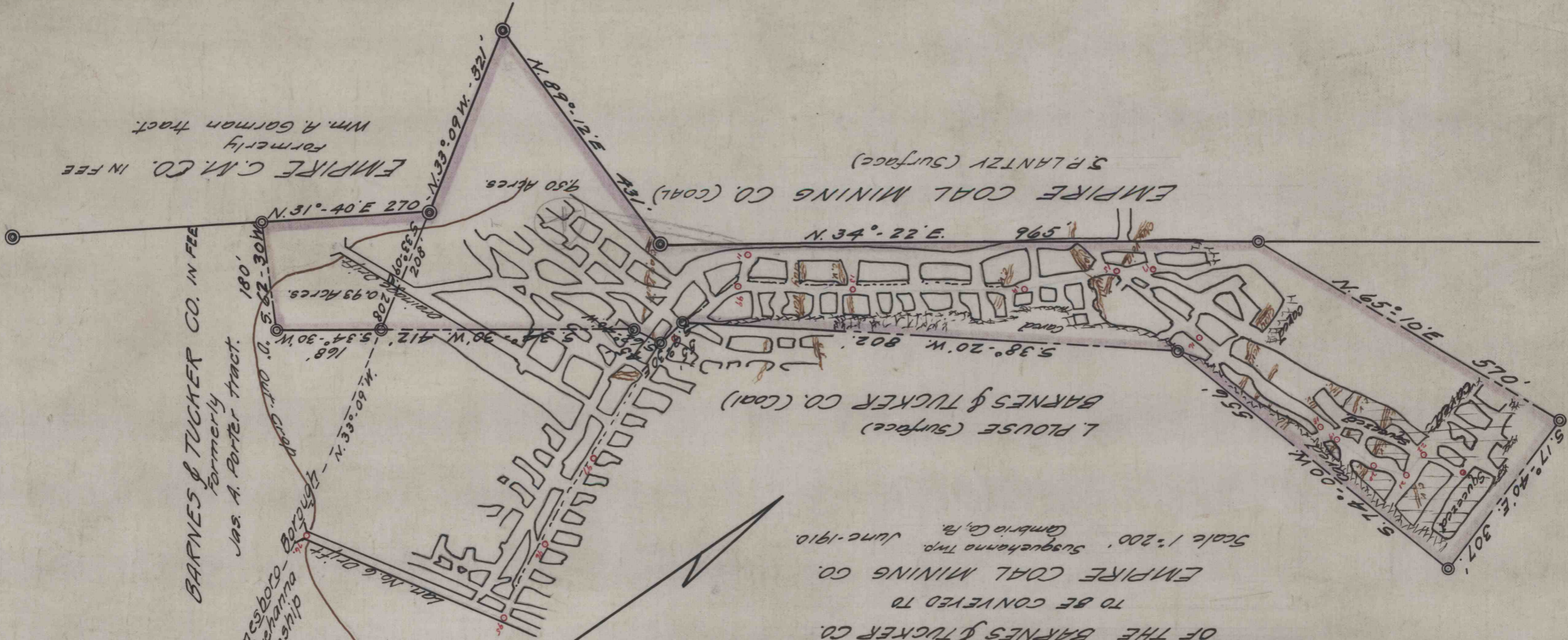


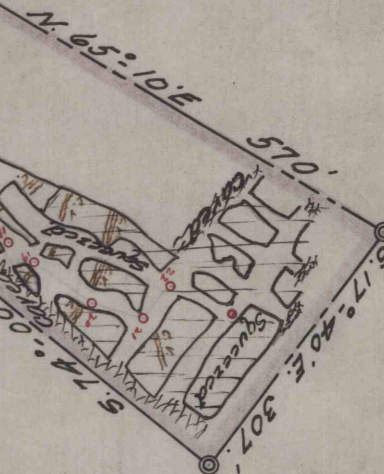
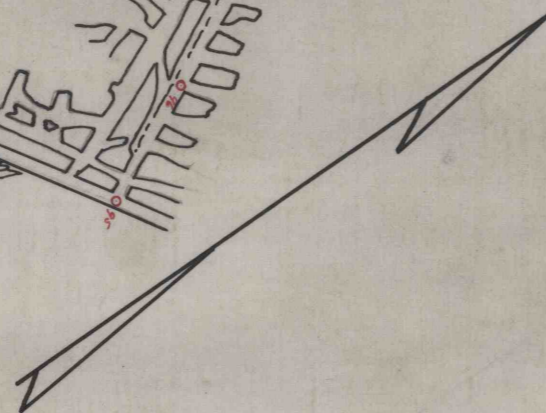
MAP SHOWING  
 PILLARS STANDING IN LAN. NO. 6 MINE  
 OF THE BARNES & TUCKER CO.  
 TO BE CONVERTED TO  
 EMPIRE COAL MINING CO.  
 Scale 1"=200' Susquehanna Twp. Cambria Co. Pa. June-1910.



BARNES & TUCKER CO. IN FEE  
 Formerly  
 Jas. A. Porter tract.

EMPIRE C.M. CO. IN FEE  
 Formerly  
 Wm. A. Gorman tract.

Barnesboro  
 Susquehanna  
 Township



BARNES & TUCKER CO. (COAL)  
 L. PLOUSE (SURFACE)

EMPIRE COAL MINING CO. (COAL)  
 SURFACE

180'  
 0.562-304

168'

5.33-04

4.93 Acres

208'

208'

208'

208'

208'

208'

208'

208'

208'

208'

208'

208'

208'

208'

208'

208'

208'

208'

208'

208'

208'

208'

168'

5.33-04

4.93 Acres

208'

208'

208'

208'

208'

208'

208'

208'

208'

208'

208'

208'

208'

208'

208'

208'

208'

208'

208'

208'

208'

208'