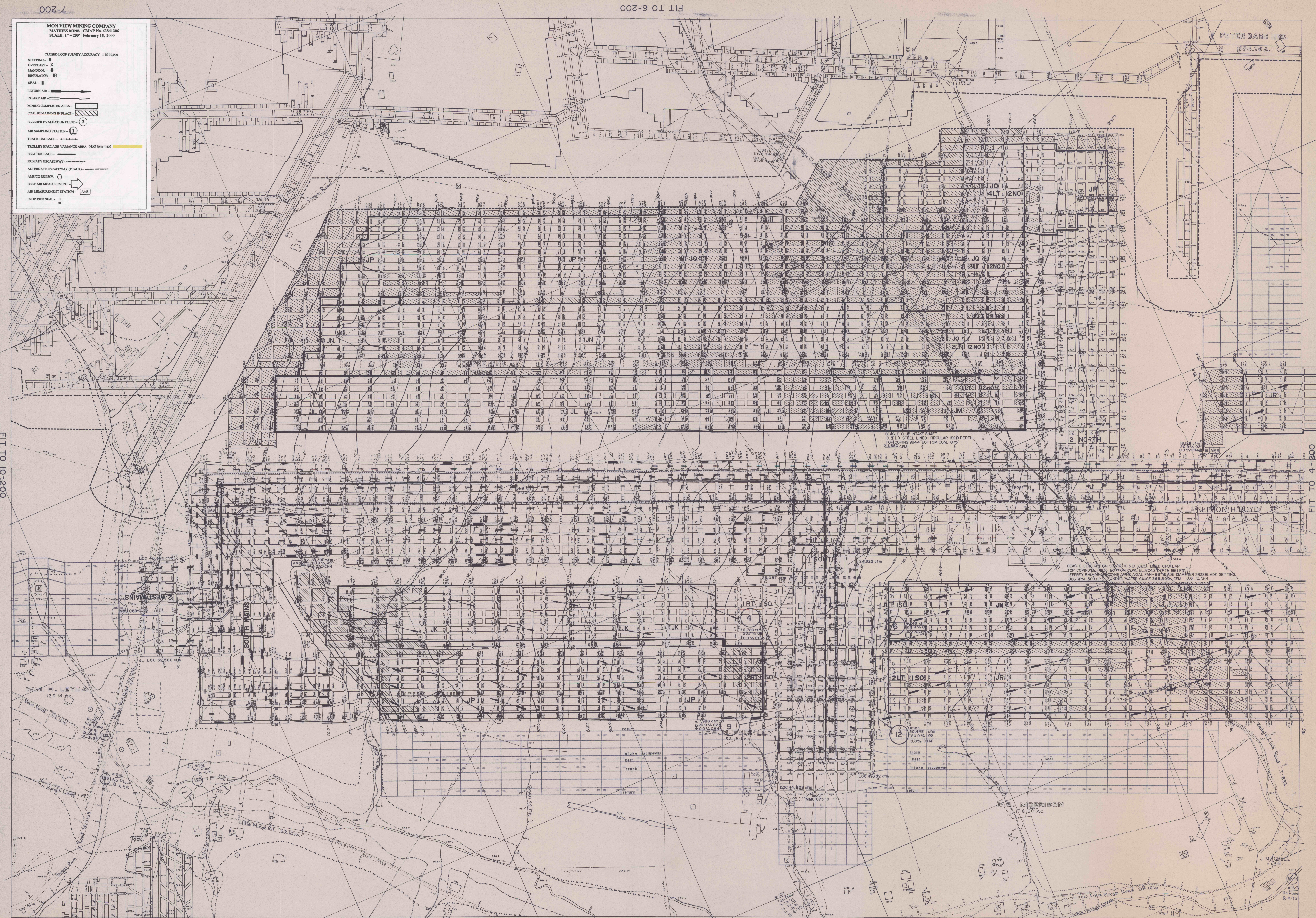


**MON VIEW MINING COMPANY**  
**MATHIES MINE** CMAP No. 63841386  
 SCALE: 1" = 200' February 15, 2009

CLOSED LOOP SURVEY ACCURACY: 1 IN 10,000

- STOPPING - II
- CHUCKERAST - X
- MANDOOR - #
- REGULATOR - IR
- SEAL - III
- RETURN AIR -
- INTAKE AIR -
- MINING COMPLETED AREA -
- COAL REMAINING IN PLACE -
- BLEEDER EVALUATION POINT -
- AIR SAMPLING STATION -
- TRACK HAULAGE -
- TROLLEY HAULAGE VARIANCE AREA (450 ftm min) -
- BELT HAULAGE -
- PRIMARY ESCAPEWAY -
- ALTERNATE ESCAPEWAY (TRACK) -
- AMESCO SENSOR -
- BELT AIR MEASUREMENT -
- AIR MEASUREMENT STATION -
- PROPOSED SEAL -



PETER BARR HBS.  
1006.TSA.

SEALE CLAS INTAKE SHAF  
 10.4" I.D. STEEL LINED-CIRCULAR 1829' DEPTH  
 1702 COPING 9944' BOTTOM COAL 1818'  
 21,650 CFM

SEALE CLAS RETURN SHAF 10.5" I.D. STEEL LINED CIRCULAR  
 TOP COPING 9943' BOTTOM COAL EL. 8042' DEPTH 1811 FT  
 JEFFERY SHAFT-ROCKY MINE AXIAL FAN-90" WIDE DIAMETER 9335 BLADE SETTING  
 885 RPM 500 HP  
 2" WATER GAUGE 163,100 CFM 3.0 3/4 CH4

WM. H. LEYDA  
125.14

MORRISON  
18.55 Ac