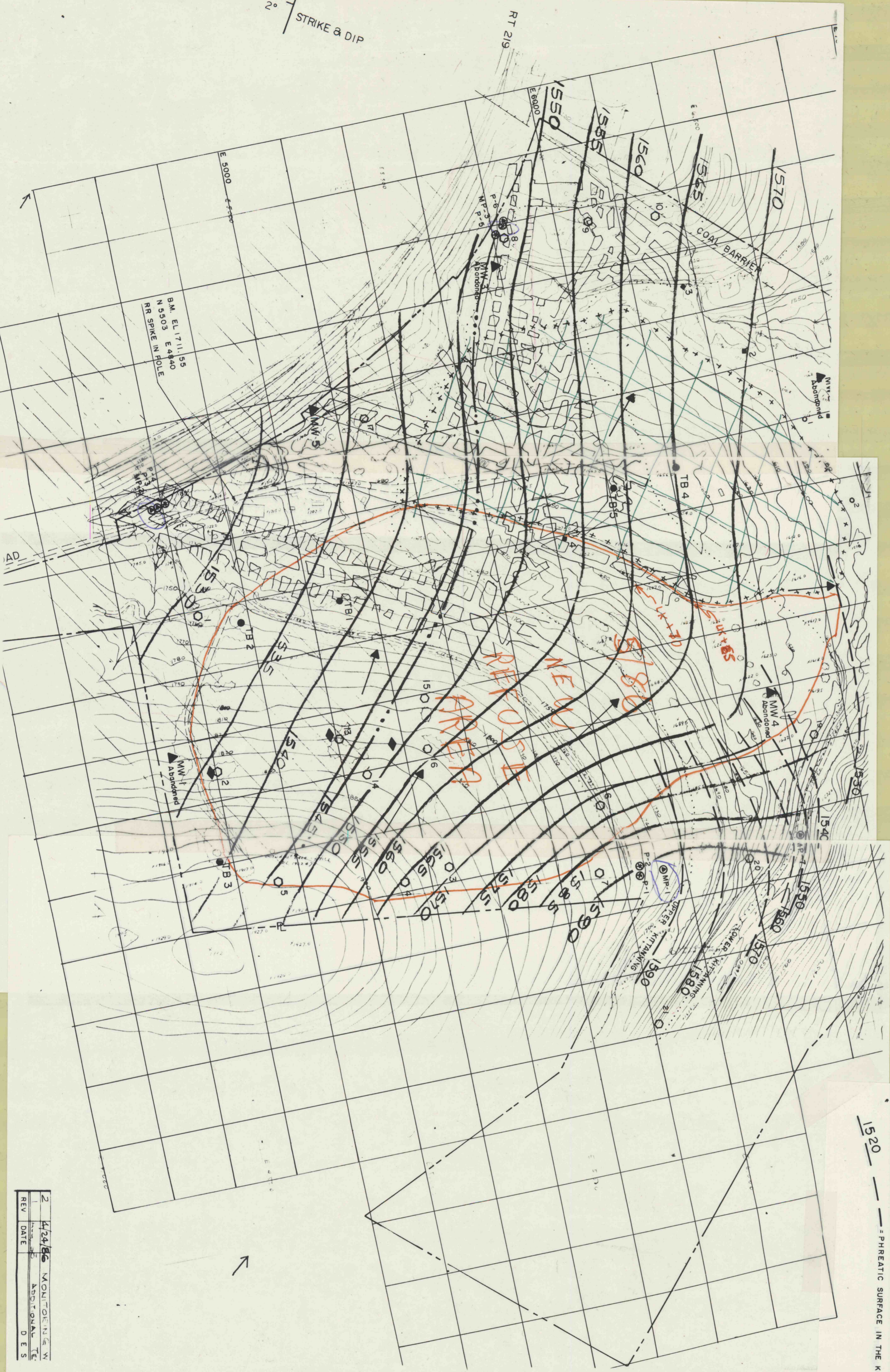


2° STRIKE & DIP

RT 219

B.M. EL. 1711.55  
N 5503 E 4840  
RR SPIKE IN HOLE



1520 - - - - - PHREATIC SURFACE IN THE KITTANNING SANDSTONE (1/30/86 - 1/31/86)

LEGEND

- MW 2 ▲ = PREVIOUS MONITORING WELL
- TB 3 ● = TEST BORING
- = GENERAL DIRECTION OF UNCONFINED GROUNDWATER FLOW
- 5 = TEST PIT Sampled (10/1/80)
- = TEST PIT Sampled 1985
- = TEST PIT Sampled 1971

1545 = DEEP MINE WORKS from: JASAHILL MINE MAP (LOWER KITTANNING COAL SEAM)

- ◆ = LOWER KITTANNING COAL STRUCTURE CONTOUR
- ◆ = TEST PIT Excavated 12/10/85 by D.E.R. Rio Coleman
- ++++ = APPROXIMATE LOCATION OF STRIP MINE HIGHWALL
- MP-2 = APPROXIMATE EXTENT OF PRESENT REFUSE
- ⊙ = 4" P.V.C PIPE MONITORING WELL Drilled Jan.-1986
- P-5 = 2" P.V.C PIPE PIEZOMETER Drilled Jan.-1986
- - - - - = APPROXIMATE LIMIT OF LOWER KITTANNING COAL MINE POOL

2	4/24/86	MONITORING W
1		ADDITIONAL TE
REV	DATE	D E S