

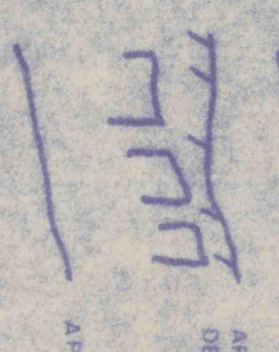
LEGEND

- SURFACE EXPLORATION
- BACKHOE TEST PIT, DEC. 1980
- ▲ MONITORING WELL
- ▽ MONITORING WELL, DEC. 1980 - JAN. 1981
- ◆ TEST BORING
- ◆ TEST BORING, AUG. 1984

→ GENERAL DIRECTION OF UNCONFINED GROUNDWATER FLOW

--- STRUCTURE CONTOURS, BASE OF UPPER KITTANNING COAL

--- APPROXIMATE LOCATION OF QUICKEE AND DEEP KING MEMBERS OF THE UPPER KITTANNING COAL



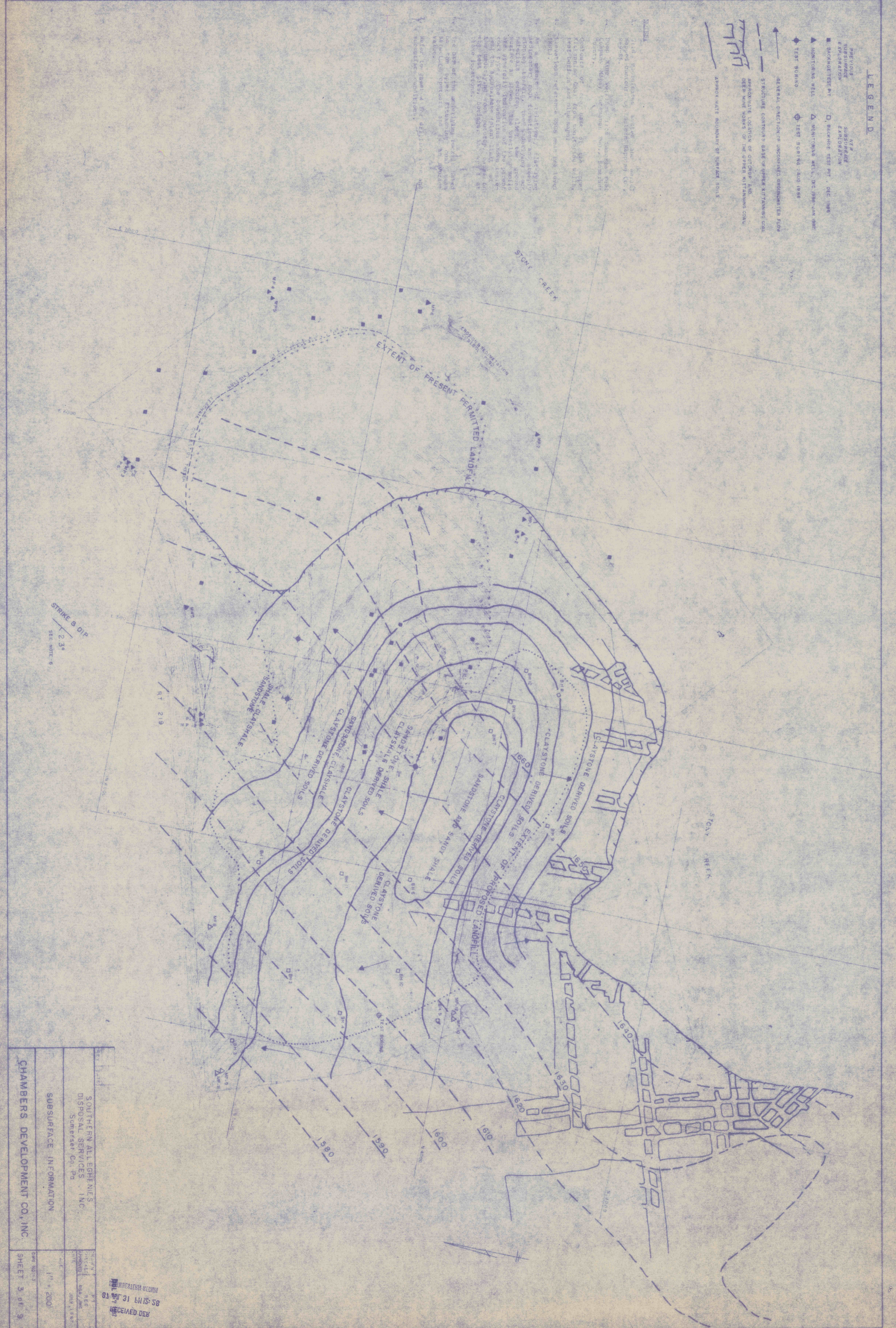
APPROXIMATE BOUNDARY OF SURFICIAL SOILS

1. This report was prepared by the author in cooperation with the U.S. Geological Survey, Columbia, Maryland, and the Pennsylvania Department of Environmental Protection, Harrisburg, Pennsylvania.

2. The data of the underlying investigation were obtained from the Pennsylvania Department of Environmental Protection, Harrisburg, Pennsylvania, and the U.S. Geological Survey, Columbia, Maryland.

3. The date of the underlying investigation is indicated on the map.

4. The author is responsible for the accuracy of the data and the conclusions drawn therefrom.



CHAMBERS DEVELOPMENT CO., INC.	DATE	11/18/87
	SHEET	3 OF 9
SUBSURFACE INFORMATION	SCALE	1" = 200'
	DATE	11/18/87
SOUTHERN ALLEGHENIES DISPOSAL SERVICES, INC.	PROJECT	CHAMBERS DEVELOPMENT CO., INC.
	CLIENT	CHAMBERS DEVELOPMENT CO., INC.

RECEIVED DEC 31 1987