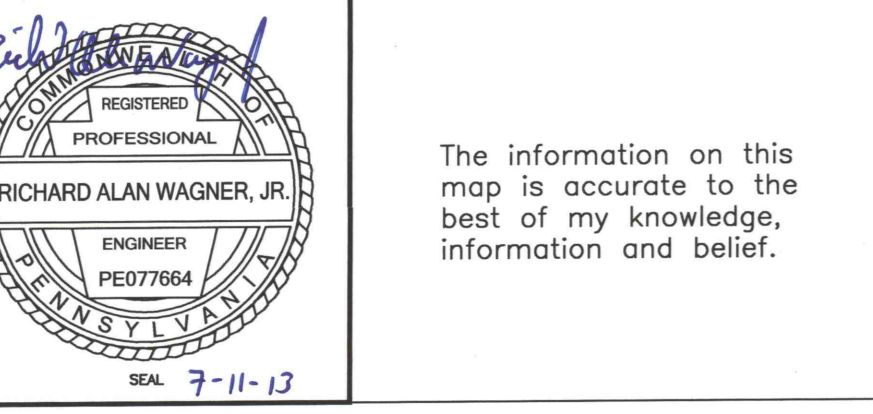


RoxCoal, Inc.  
Agustus Mine  
**Final Map**  
MSHA ID# 36-08636  
C.M.A.P. NO. 56951301  
1499 Cahagen Road  
Central City, PA 15926  
Upper Kittanning Seam  
Date: 7-11-13  
Scale: 1"=200'  
Sheet 1



The information on this map is accurate to the best of my knowledge, information and belief.

This map represents the complete and accurate locations of all excavations and is the Final Map.

Company Corporate Officer

**VENTILATION LEGEND**

- STOPPING WITH COOL
- STOPPING WITH HEAT
- IMPROVED STOPPING
- WATER
- CONVEYOR
- OVERHEAT
- FNK SEALS
- LINE GROUND
- GROUND ROOMS
- COOL WITH HOLE
- PLUGGED AREA
- CHESSED AREA
- CHESSED SURVEY STATION

**LEGEND FOR ABANDONED DEEP MINES**

- HUSKIN #4 (Upper Kittanning 'C' Seam)
- HUSKIN #3 (Lower Kittanning 'B' Seam)
- ROZEL #1 (Lower Kittanning 'B' Seam)
- SHADE #1 (Upper Kittanning 'C' Seam)
- LAUREL (Lower Kittanning 'B' Seam), inactive

**PROCEDURES USED TO LOCATE ABANDONED UNDERGROUND MINES**

**Lower Kittanning, Upper Kittanning, Lower Prospect, Upper Prospect Seams**

Joseph Collins, Collins Mine, Determination # 1004, located from Hartshorn Surveying Co. map Reference No. 1004

Lower Prospect, Middle Kittanning, Lower Prospect Seams

Richard E. Smith, Smith Mine, Determination # 1790, located from Hartshorn Surveying Co. map Reference No. 1790

Lower Kittanning, Middle Kittanning, Lower Prospect Seams

Richard E. Smith, Smith Mine, Determination # 1790, located from Hartshorn Surveying Co. map Reference No. 1790 and 1004

Lower Prospect, Upper Prospect Seams

Richard E. Smith, Smith Mine, Determination # 1790, located from Hartshorn Surveying Co. map Reference No. 1790 and 1004

Lower Kittanning, Middle Kittanning, Lower Prospect Seams

Richard E. Smith, Smith Mine, Determination # 1790, located from Hartshorn Surveying Co. map Reference No. 1790 and 1004

Lower Prospect, Upper Prospect Seams

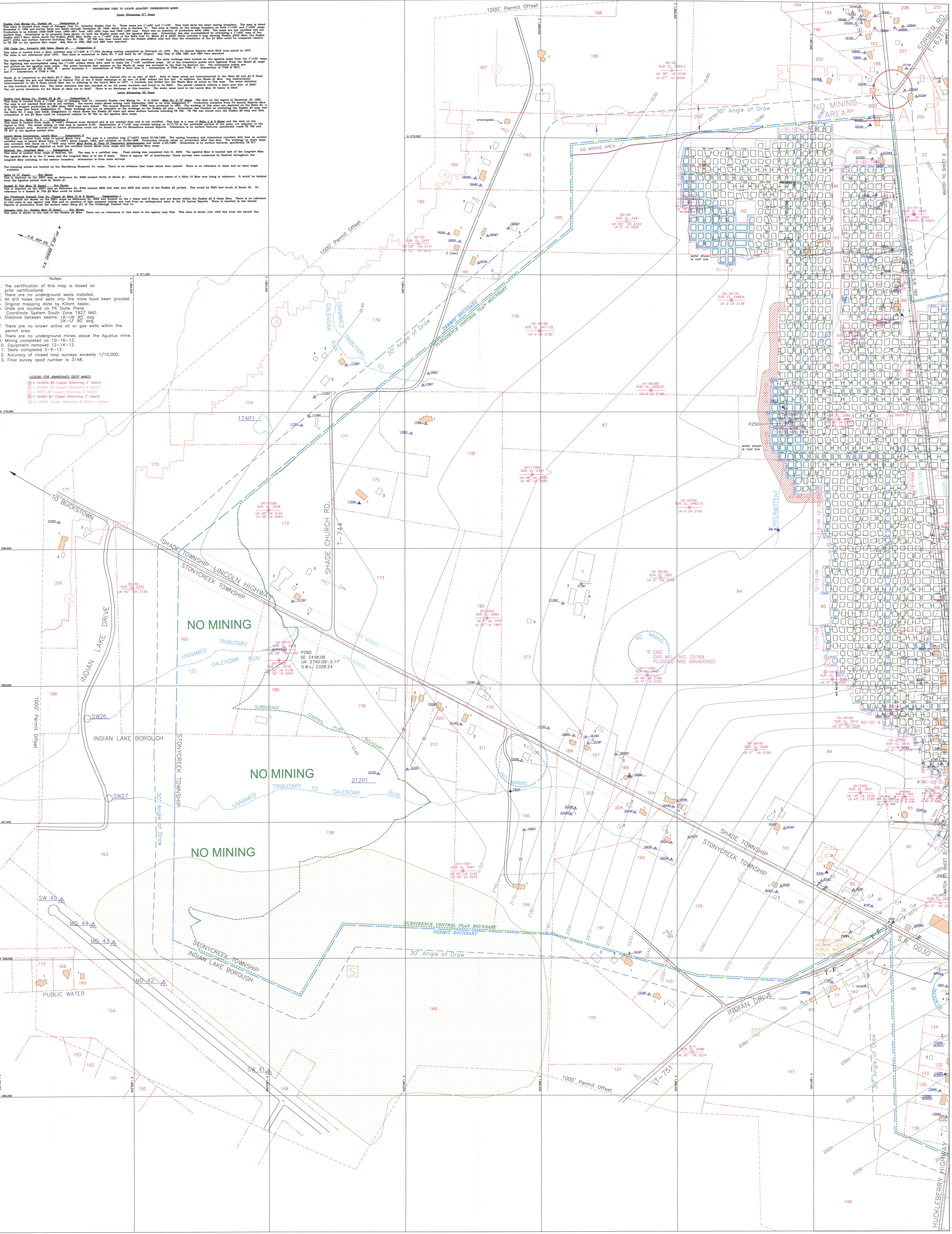
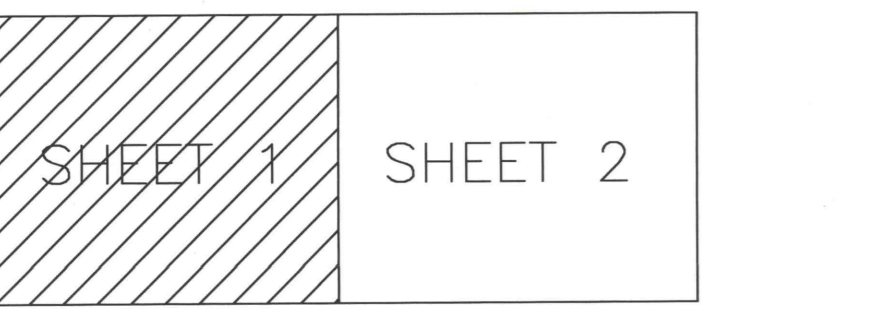
Richard E. Smith, Smith Mine, Determination # 1790, located from Hartshorn Surveying Co. map Reference No. 1790 and 1004

**ADVANCED MINE LOGS**

REGISTRATION NO.	MINE NAME	REGISTRY NAME	SEAM
1004	Collins Mine	Collins Mine	Upper Kittanning
1790	Smith Mine	Smith Mine	Lower Kittanning
1004	Collins Mine	Collins Mine	Upper Kittanning
1790	Smith Mine	Smith Mine	Lower Kittanning

- Check surveys:**
- On 10-27-04 from control outside to spot 49 in main.
  - On 3-24-05 from spot 49 to spot 122 in west mine.
  - On 12-22-05 from spot 49 to spot 578 in 1 right.
  - On 1-11-06 from spot 578 to spot 536 in west mine.
  - On 2-8-06 from spot 636 to spot 644 in 1 left.
  - On 2-22-06 from spot 644 to spot 692 in A butt.
  - On 2-22-06 from check spot 48 to spot 159 in 2 left.
  - On 8-1-06 from check spot 48 to spot 832 in C butt.
  - On 10-31-06 from check spot 202 to spot 823 in D butt.
  - On 12-15-07 from spot 823 to spot 850 in 1 left.
  - On 12-15-07 from check spot 48 to face of 1 west coal to spot 884 in E butt.
  - On 12-15-07 from check spot 48 to face of 1 west coal to face of 2 south.
  - On 11-8-07 from check spot 256 to spot 1053 in 1 north.
  - On 11-15-07 from spot 1053 to spot 1081 in 1 north.
  - On 1-25-08 from check spot 277 to spot 1156 in 1 east.
  - On 8-14-08 from check spot 284 to spot 1251 in 2 right.
  - On 8-27-08 from outside baseline to spot 14.
  - On 9-4-08 from spot 14 to one 316.
  - On 9-11-08 from one 316 to spot 540.
  - On 9-18-08 from spot 540 to spot 595.
  - On 10-13-08 from spot 595 to spot 1248 in 4 main 2 right.
  - On 11-20-08 from one 302 to spot 1428 in 5 main.
  - On 11-15-09 from one 370 to spot 1407 in 5 main.
  - On 1-15-09 from one 358 to spot 1512 in main A.
  - On 2-8-09 from one 383 to spot 1494 in 5 main.
  - On 8-22-09 from one 401 to one 410 in 5 main.
  - On 6-5-09 from one 391 to one 419 in main A.
  - On 6-10-09 from one 419 to spot 1638 in main B.
  - On 6-19-09 from one 410 to spot 1586 in 5 main.
  - On 6-18-09 from one 1638 to spot 1680 & 1692 in main B.
  - On 7-10-09 from one 439 to spot 1662 in 5 main.
  - On 8-18-09 from one 1680 to spot 1813 in main B1.
  - On 10-28-09 from spot 1813 to spot 1872 in main B.
  - On 2-3-10 from one 470 to spot 1931 in main B.
  - On 3-28-10 from spot 1986 to spot 2024 in main B.
  - On 8-28-10 from spot 2024 to spot 2058 & one 489 within 100' of the face of main B.
  - On 7-4-10 to spot 2123 in main B rooms.
  - On 9-3-10 to spot 2223 in main C first room to left.
  - On 9-29-10 to spot 2266 in main C first room to left.
  - On 11-16-10 to check spot 483 at face of main C second room to left.
  - On 1-3-11 to spot 2361 & check spot 325 at face of main C.
  - On 4-11-11 to spot 2422 in main D.
  - On 4-13-11 to spot 2525 & check spot 544 at face of main D2.
  - On 5-11-11 to spot 2576 & check spot 641 at face of main D1.
  - On 6-27-11 to spot 2604 & check spot 557 at face of main D3.
  - On 7-11-11 to spot 2637 & check spot 563 in main D.
  - On 8-19-11 to spot 2734 & check spot 593 at face of main D5.
  - On 8-19-11 to spot 2737 & check spot 601 at face of main D1.
  - On 10-28-11 to spot 2767 in main E1.
  - On 11-16-11 to spot 2796 & check spot 610 at face of main E1.
  - On 12-30-11 to spot 2860 in main E2.
  - On 1-13-12 to spot 2903 in 5 main butt to left.
  - On 6-13-12 to spot 1612 & check spot 625 in SA.
  - On 6-22-12 to spot 2983 in SA.
  - On 7-11-12 to spot 3046 & check spot 641 within 100' of face in SA.

Accuracy of closed loop surveys exceeds 1/10,000.



- Notes:**
- The certification of this map is based on prior certifications.
  - There are no underground seals installed.
  - All drill holes and wells into the mine have been grouted.
  - Original mapping done by Kilham Assoc.
  - Grids are located on PA State Plane, Coordinate System South Zone 1927 NAD.
  - Distance between seams: UK-LK 95' avg. UK-LF 80' avg.
  - There are no known active oil or gas wells within the permit area.
  - There are no underground mines above the Agustus mine.
  - Mining completed on 10-16-12.
  - Equipment removed 12-14-12.
  - Seals completed 5-6-13.
  - Accuracy of closed loop surveys exceeds 1/10,000.
  - Final survey spot number is 3148.

**LEGEND FOR ABANDONED DEEP MINES**

- HUSKIN #4 (Upper Kittanning 'C' Seam)
- HUSKIN #3 (Lower Kittanning 'B' Seam)
- ROZEL #1 (Lower Kittanning 'B' Seam)
- SHADE #1 (Upper Kittanning 'C' Seam)
- LAUREL (Lower Kittanning 'B' Seam), inactive