

MAPLE CREEK MINING, INC. UMCO ENERGY, INC.

HIGH QUALITY MINE PITTSBURGH SEAM

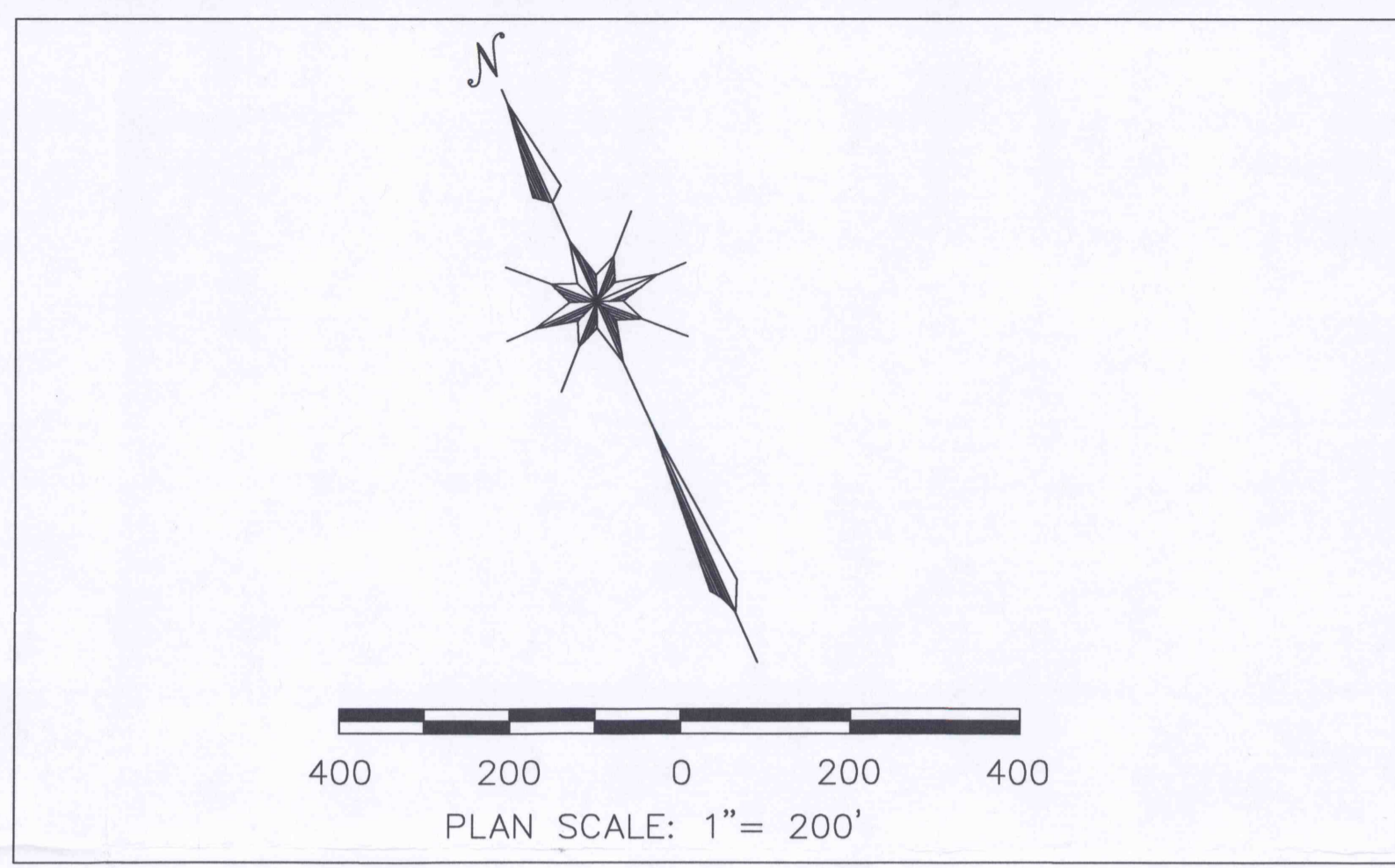
MSHA ID No. 36-08375
PA-DEP CMAP - 63921301

FINAL MAP

OFFICES:
981 ROUTE 917
BENTLEYVILLE, PA 15314

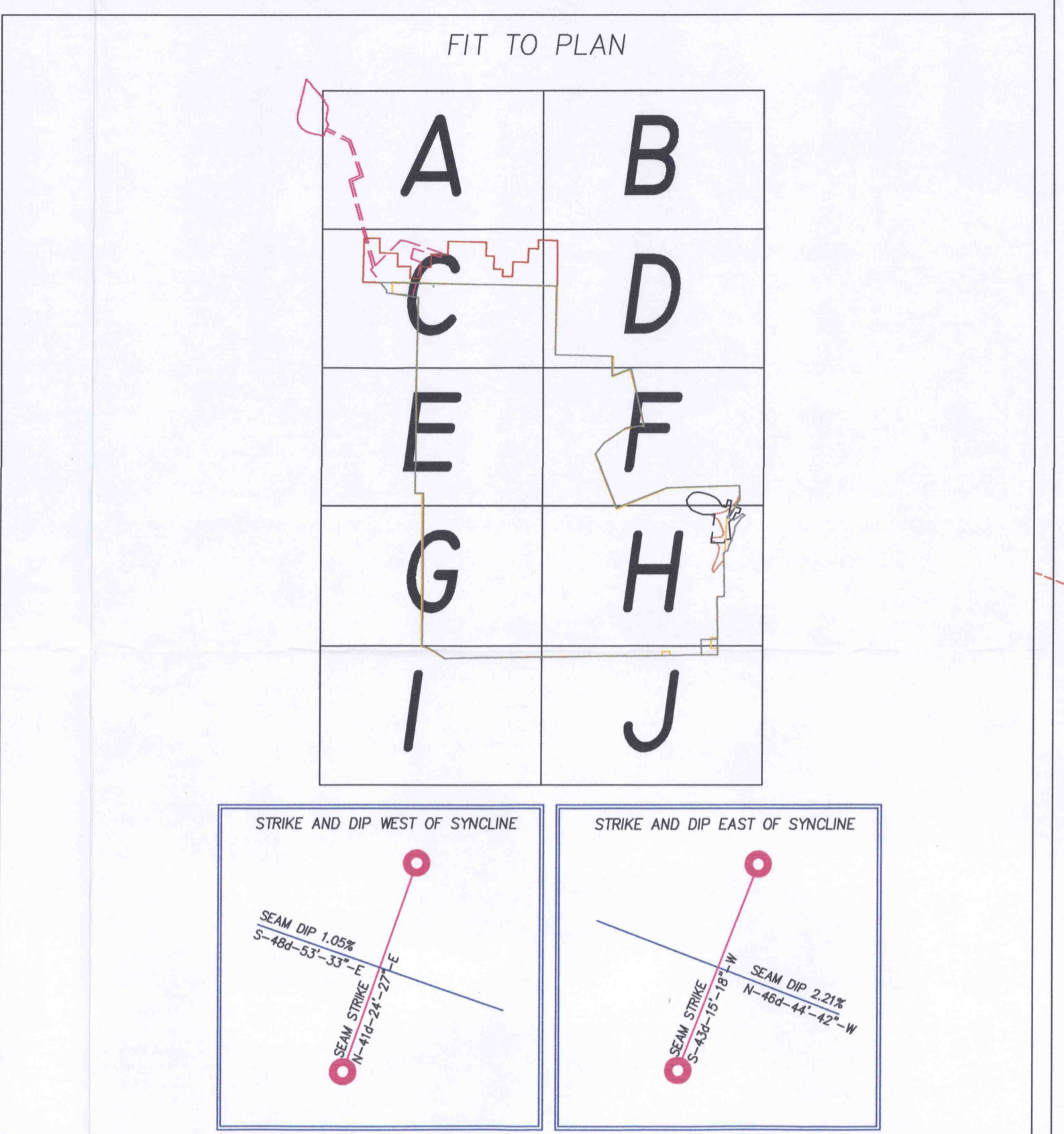
PORTAL:
1965 ROUTE 481
MONONGAHELA, PA 15063

CARROLL TOWNSHIP &
FALLOWFIELD TOWNSHIP
WASHINGTON COUNTY
COMMONWEALTH OF PENNSYLVANIA



LEGEND

	Gob
	Base Line Point
	Local Grid
	State Plane Grid
	Permit Line
	Stopping With Hole
	Stopping With Man Door
	Overcast
	Stopping
	Intake Air
	Return Air
	Regulator
	Roof Fall
	Equipment Door
	Canvas
	Isolation Wall



NOTES:

Date of last mining: February 24, 2005
No underground mining above or below High Quality Mine.
Closed loop survey (1 in 5,000 min.)

Base Monument Point No. 1
Local: N 91270.15 E -24256.11 Elev. 1,181.45 MSL
State Plane: N 308,674.18 E 1,382,639.02 "(NAD27)"

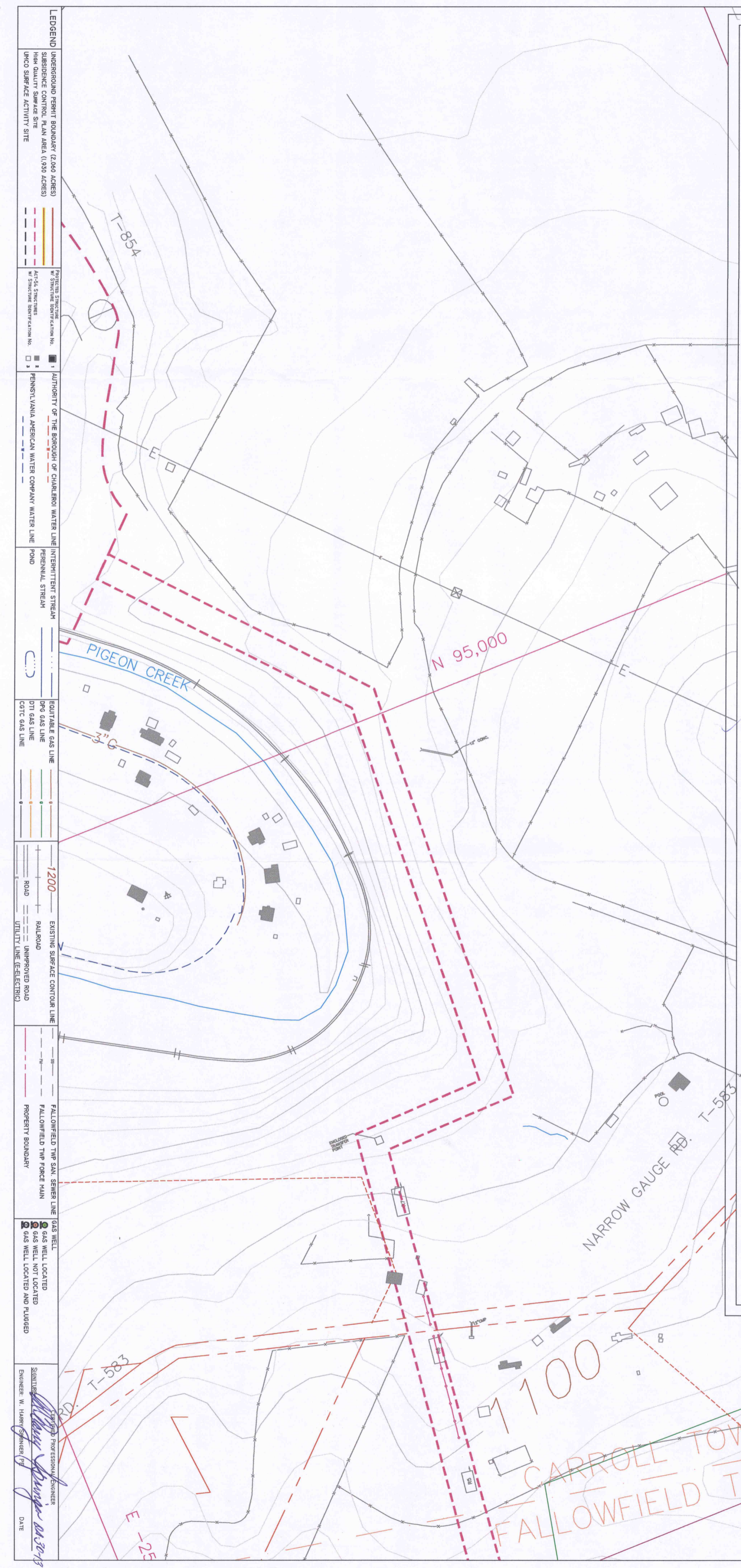
Base Monument Point No. 2
Local: N 91382.9 E -23748.3 Elev. 1,168.82 MSL
State Plane: N 308,785.94 E 1,383,153.79 "(NAD27)"

CORPORATE OFFICERS'S STATEMENT

This is the final map of UMCO Energy Inc's High Quality Mine. The mine had been previously sealed on June 29, 2005 and the final map was filed at that time. The mine was re-opened for dewatering and exploration purposes in 2011. The mine remained open until April 3, 2013 when the isolation walls and shafts caps were installed to return the mine to its temporary inactive status. No mining occurred during the period of time the mine was re-opened. Exploration was limited to 18 crosscut where a roof fall prohibited travel inby that location. Based upon our knowledge and belief, this map presents a complete and accurate representation of all excavations and is the "final Map".

Ronnie Dietz
Vice President and Treasurer
UMCO Energy, Inc.

Date: 04/29/13



FIT To - B