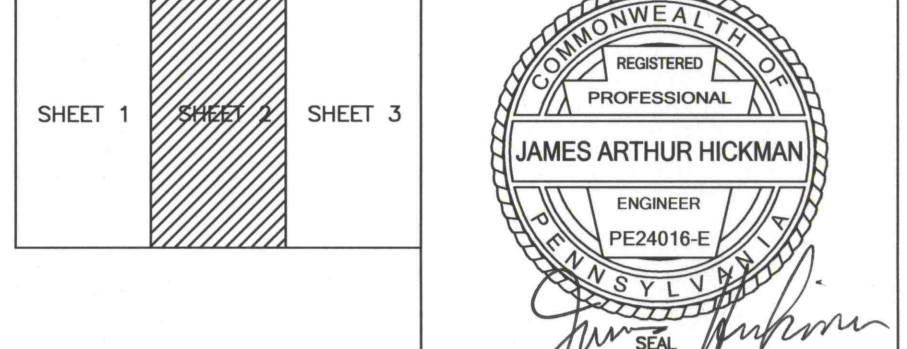


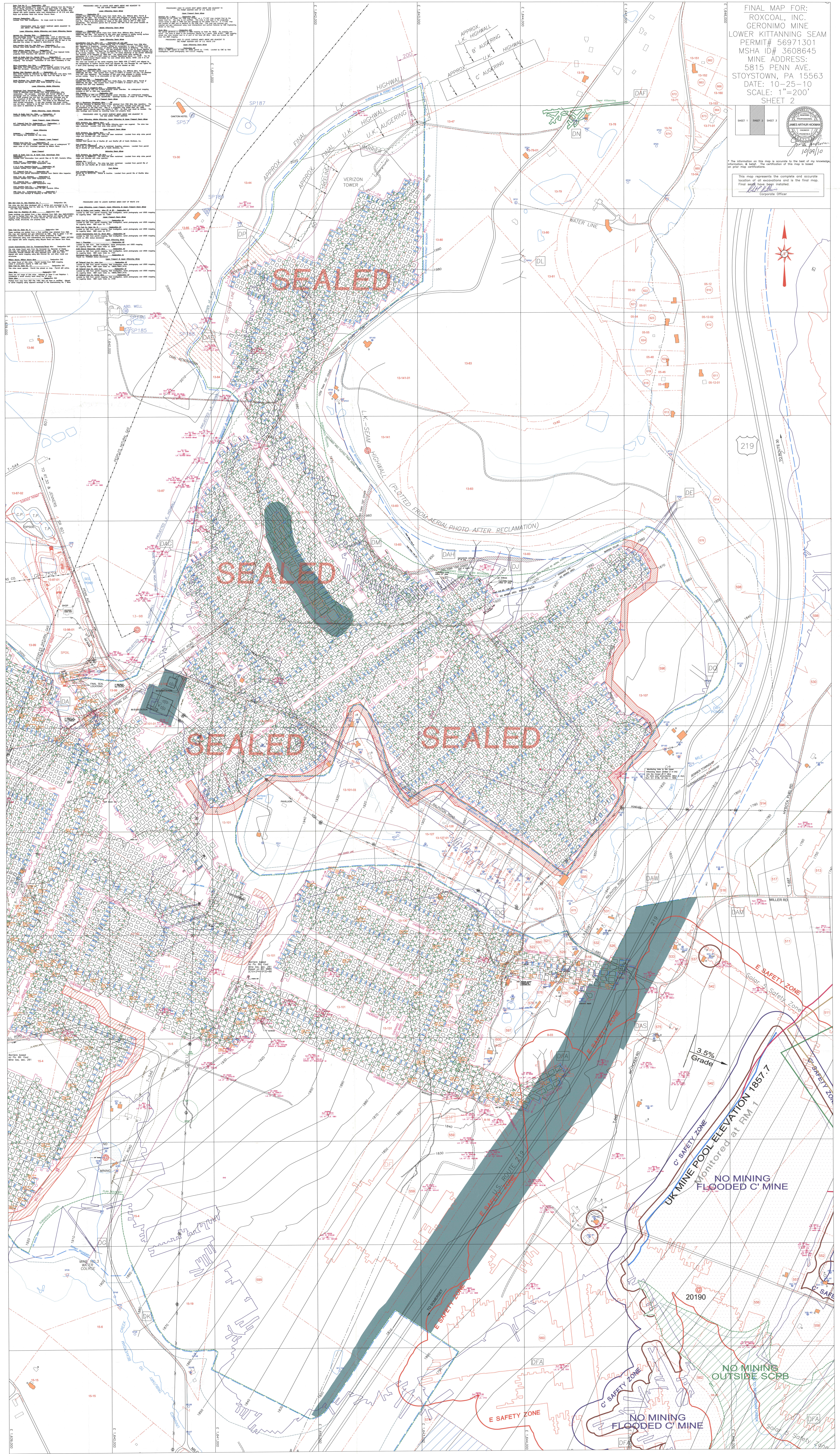
FINAL MAP FOR:
 ROXCOAL, INC.
 GERONIMO MINE
 LOWER KITTINGING SEAM
 PERMIT # 56971301
 MSHA ID# 3608645
 MINE ADDRESS:
 5815 PENN. AVE.
 STOYSTOWN, PA 15563
 DATE: 10-25-10
 SCALE: 1"=200'
 SHEET 2



The information on this map is accurate to the best of my knowledge, information, & belief. The certification of this map is based on prior map certifications.

This map represents the complete and accurate location of all excavations and is the final map. Final work logs apply, if needed.

Corporate Officer



REVISIONS TO THIS MAP:

NO.	DATE	DESCRIPTION
1	10/25/10	Initial Issue
2	10/25/10	Revised Safety Zones
3	10/25/10	Added Flooded Areas
4	10/25/10	Updated Infrastructure
5	10/25/10	Final Review

GENERAL NOTES:

- All excavations shown on this map are to be sealed and backfilled.
- The map shows the location of all excavations and is the final map.
- Final work logs apply, if needed.
- The map is accurate to the best of my knowledge, information, and belief.
- The certification of this map is based on prior map certifications.
- The map represents the complete and accurate location of all excavations and is the final map.
- Final work logs apply, if needed.